

COUNCIL MINUTES

November 15, 2021

The City Council of the City of Mesa met in a Study Session in the lower-level meeting room of the Council Chambers, 57 East 1st Street, on November 15, 2021, at 5:00 p.m.

COUNCIL PRESENT

John Giles*
Jennifer Duff
Mark Freeman
Francisco Heredia
David Luna
Julie Spilsbury
Kevin Thompson

COUNCIL ABSENT

OFFICERS PRESENT

Christopher Brady
Dee Ann Mickelsen
Jim Smith

(*Participated in the meeting through the use of telephonic equipment.)

Vice Mayor Duff conducted a roll call.

(Vice Mayor Duff excused Mayor Giles from the beginning of the meeting; he arrived at 5:05 p.m.)

1. Review and discuss items on the agenda for the November 15, 2021, Regular Council meeting.

All of the items on the agenda were reviewed among Council and staff and the following was noted:

Conflict of interest: None

Items removed from the consent agenda: None

Library Director Polly Bonnett displayed a PowerPoint presentation related to Item 4-o, **(Library Improvements Project – Dobson Ranch Improvements – Construction Manager at Risk (CMAR), Guaranteed Maximum Price (GMP))**, on the Regular Council Meeting agenda. She explained in 2018 voters approved \$1.5 million in bond funding to update the façade of Dobson Ranch Library (DRL) and add 1800 square feet to the interior space which includes ThinkSpot, Maker Space, and a programming area for the studio. **(See Attachment 1)**

Ms. Bonnett displayed renderings of the current exterior from 1987 when the DRL opened, the new façade rendering with a wider walkway and more visible entrance, and a view in the evening. (See Pages 2 through 4 of Attachment 1)

Ms. Bonnett displayed an aerial view of the construction area and noted this site was selected due to the minimal impact to the space and is the most cost effective. (See Page 5 of Attachment 1)

Ms. Bonnett presented the floorplan of the existing space plus the addition. She explained that the current landscaping is a monarch butterfly haven and construction will focus on bringing back plants that encourage the return of the butterflies. She also noted that architects will create a water harvesting feature, which will allow staff to provide sustainability programming. She stated the project anticipates a 30-day closure for beginning of construction in January 2022. (See Page 6 of Attachment 1)

In response to a question from Councilmember Luna regarding the funds for the ThinkSpot technology, Ms. Bonnett commented there are funds in the operational budget to purchase equipment for ThinkSpot.

In response to a question posed by Councilmember Heredia, Ms. Bonnett explained construction would take approximately seven months.

In response to questions from Councilmember Freeman regarding Item 6-c, **(ZON20-00840 (District 1) Within the 1000 block of East McKellips Road (south side). Located west of Stapley Drive on the south side of McKellips Road (4.5± acres). Rezone from Single Residence 9 (RS-9) and Multiple Residence 4 (RM-4) to Multiple Residence 2 (RM-2) with a Planned Area Development Overlay (PAD); and Site Plan Review)**, on the Regular Council Meeting agenda, Transportation Department Director RJ Zeder commented residents had concerns about making a left turn into the project from McKellips Road, so the developer has submitted a revised site plan that includes a concrete median island to restrict turning and will not affect the use of the canal path.

Discussion ensued relative to Item 5-f, **(Approving the recommendations of the City of Mesa Redistricting Commission concerning the establishment of Council District Boundaries in accordance with the 2020 U.S. Decennial Census)**, on the Regular Council Meeting agenda.

Councilmember Thompson reiterated his concern that the Crismon Creek subdivision should be in District 6 versus allowing the US 60 to divide the entire community; however, he did not think that change would be made.

Councilmember Spilsbury expressed the opinion that the goal of districts is to spread Councilmembers out across the City and to help residents know which councilmember to contact regarding issues.

Councilmember Luna explained he is going to introduce Councilmember Spilsbury to a part of his current district that is being redrawn into District 2 and encouraged other Councilmembers to do the same.

In response to a question from Councilmember Thompson regarding Item 4-n, **(Greenfield Water Reclamation Plant (GWRP) Blower System Electrical Improvements – Pre-Construction Services and Construction Manager at Risk (CMAR))**, on the Regular Council Meeting agenda, City Engineer Beth Huning stated the primary purpose of the large project just completed at this plant a year ago was to expand the capacity of the plant. She commented the added capacity is needed to get online relatively quickly in order to meet the growing demands of the City. She explained during that process a number of rehabilitation projects were discovered. She remarked

an operating treatment plant is under severe corrosive and environmental conditions, and equipment wears out and technology changes, particularly for electrical systems. She reported staff was able to bring the project in under budget resulting in approximately \$3 million in savings that can be used towards the improvement project.

Acting Water Resources Director Christopher Hassert explained part of asset management is to focus on the large project and try to bring in limited outlier type items in that project. He reported the expected useful life is 15-20 years, so these improvements were predicted, just not included as part of the larger project.

Water Resources Advisor Brian Draper introduced Acting Water Resources Director Christopher Hassert, and Assistant City Attorney III Bill Taebel and provided information on Item 5-h, **(Approving and authorizing the City Manager to enter into an Agreement associated with conducting a feasibility study for modifying Bartlett Dam and sharing these costs among various participating entities and the Salt River Project Agricultural Improvement and Power District, with the City contributing \$400,000 over four years)**, on the Regular Council Meeting agenda. He reported on an appraisal study that looked at alternatives to replace volume in Horseshoe Reservoir that was lost due to sediment. He stated over the years, one-third of the capacity of Horseshoe Reservoir has been lost and staff is looking at ways to create replacement for the lost capacity and to increase capacity. He commented on two alternatives that staff will be taking to the US Bureau of Reclamation (Bureau) for investigation; raising Bartlett Dam, one proposes 62 feet and the other proposes 97 feet from current levels.

Mr. Draper explained 21 participating entities are involved in the feasibility study and the item before Council is a cost-share agreement to pay for Mesa's portion of the cost. He reported half of the cost is being paid by the Bureau and the other half by the 21 entities. He detailed part of the cost-share agreement is to pay \$100,000 per year for four years, which is the term of the feasibility study. He remarked this will provide the City with voting rights. He stated another option is to pay \$30,000, which allows a seat in the audience and no voting rights. He remarked the committee will decide how water will be allotted, which is why staff is seeking approval so Mesa will have a vote; however, the feasibility study does not give the City a right to water.

In response to a question from Vice Mayor Duff, Mr. Draper explained there is also an environmental impact study as well as historical and archeological type studies that will need to be completed since a large portion of the area around Bartlett Lake will be affected.

Vice Mayor Duff thanked staff for the presentations.

2-a. Hear a presentation, discuss, and provide direction on proposed Mesa Moves Active Transportation projects.

Transportation Department Director RJ Zeder introduced Deputy Transportation Director Erik Guderian and displayed a PowerPoint presentation. **(See Attachment 2)**

Mr. Zeder provided an overview of active transportation infrastructure costs, and that the amount of physical infrastructure installed drives the cost of street projects. (See Page 2 of Attachment 2)

Mr. Zeder displayed photographs illustrating shared use path off-street projects and completed street projects. He stated the first example shows where a lane of traffic was removed, and a separate bike lane was created; and the second photograph shows where a lane of traffic was removed, and a sidewalk was widened. (See Pages 3 and 4 of Attachment 2)

Mr. Zeder highlighted future system improvements and indicated the completed path sections along with signals, future network, and signal locations. (See Page 5 of Attachment 2)

Mr. Zeder provided a summary of the community survey and prioritization criteria. He commented the feedback indicated residents would like more off-street pathways, and cyclists would like to see separated bike lanes. He indicated 75% of respondents prefer more pathway mileage with fewer amenities. (See Pages 6 and 7 of Attachment 2)

Mr. Guderian displayed a map that shows the projects that staff is prioritizing, which are in a variety of locations. He indicated these priorities were established from the Bicycle Master Plan, citizen feedback, and the survey. He stated the prioritization matrix was created and scores compiled from that feedback. He added projects were grouped based on whether they were ready for design and projects that need a feasibility study prior to design. He highlighted the Center Street Complete Street project which would connect Downtown to the consolidated canal; and the Lehi Crossing Phase 2 project which staff is recommending a feasibility study. (See Pages 8 and 9 of Attachment 2)

Mr. Guderian displayed a map of project locations and the focus over the last 10 to 15 years has been connecting through the consolidated canal, from Gilbert and into Tempe. He explained the projects are now moving east into the city along the eastern canal. He stated staff is currently designing all the traffic signal crossing locations and that the money for that project was funded with the 2018 Parks Bonds. (See Page 10 of Attachment 2)

Mr. Zeder clarified that these are the proposed projects utilizing Mesa Moves money, and that there is a project that is moving forward in District 5, the Power Road shared use path that has already been funded with federal dollars, which is why it is not on this map.

Mr. Guderian summarized four projects that staff is recommending be moved to the design and construction phase; and two other projects for feasibility studies, which will be brought back to Council for additional direction. (See Page 11 of Attachment 2)

In response to a question from Councilmember Luna related to the location and prioritization of the projects in District 5, Mr. Guderian referred to the map on Page 8, and explained Power Road Park and Ride (PPR), which is also referred to as the Red Mountain Shared Use Path, already has funding secured and staff is working with engineering to begin design of that project. He clarified that since funding is already identified through the federal grant, that project was not included.

Mr. Zeder requested direction from Council on the \$20 million that has been set aside from the Mesa Moves program. He reported staff continues to look at non-arterial streets to determine what additional on-street facilities can be provided and which projects can be funded with operating dollars.

In response to a question from Councilmember Freeman regarding multi-use paths on canals and how projects are moved to a feasibility study phase, Mr. Guderian responded by saying historically, Maricopa Association of Governments has had a design concept for grants that cities can compete to do feasibility studies and staff tries to complete at least one per year.

In response to a question from Councilmember Spilsbury, Mr. Zeder explained these projects will be programmed in the upcoming Capital Improvement program and staff will be working on them for many years.

Mr. Guderian clarified since these projects are being built on either the Arizona Department of Transportation or Salt River Project property, and they typically take between one to two years to complete the design.

In response to a question from Councilmember Heredia regarding technology and innovation in assisting people in mapping their routes and moving them to various parts of the city, Mr. Zeder stated that is not part of the discussion today; however, it is something staff is looking into. He said the only technology currently being used on the bike paths are counters to determine the number of people using them.

Vice Mayor Duff commented on the maps, stating there appears to be a void between Country Club to Stapley and this is an area where people need active transportation. She stressed the importance in public transit options that connect to biking and walking and how to serve those who need it the most.

Vice Mayor Duff declared it was a consensus of Council to move forward with staff's recommendations.

3. Acknowledge receipt of minutes of various boards and committees.

3-a. Education and Workforce Development Roundtable meetings held on August 24 and September 27, 2021.

3-b. Economic Development Advisory Board meeting held on October 5, 2021.

3-c. Housing and Community Development Advisory Board meeting held on May 6, 2021.

3-d. Human Relations Advisory Board meetings held on August 25 and September 22, 2021.

It was moved by Councilmember Luna, seconded by Councilmember Spilsbury, that receipt of the above-listed minutes be acknowledged.

Upon tabulation of votes, it showed:

AYES – Giles-Duff-Freeman-Heredia-Luna-Spilsbury-Thompson

NAYES – None

Carried unanimously.

4. Current events summary including meetings and conferences attended.

Mayor Giles –

Washington D.C. - Bipartisan Infrastructure Bill
Annual RAF Cadet Memorial Service - Mesa Cemetery

Vice Mayor Duff –

Veterans of Washington-Escobedo Expedition
Eagles Community Center Annual Fall Festival
Beverly Park and Whitman Park Tree Planting

Councilmember Freeman –	Mesa Historical Museum BBQ Jacob's Hope Tour Phoenix Mesa Gateway Air Traffic Control Tower Tour CeCe's Hope Tour
Councilmember Thompson –	Fire Station 221 Grand Opening
Councilmember Luna –	Falcon Field Wings of Flight Gala
Councilmember Spilsbury –	Heartwood Montessori CeCe's Hope Board fundraiser Alice Cooper Solid Rock Finals Competition Veteran's Day Parade

5. Scheduling of meetings.

City Manager Christopher Brady stated that the schedule of meetings is as follows:

Thursday, November 18, 2021, 7:30 a.m. – Study Session

6. Adjournment.

Without objection, the Study Session adjourned at 6:09 p.m.

JOHN GILES, MAYOR

ATTEST:

DEE ANN MICKELSEN, CITY CLERK

I hereby certify that the foregoing minutes are a true and correct copy of the minutes of the Study Session of the City Council of Mesa, Arizona, held on the 15th day of November 2021. I further certify that the meeting was duly called and held and that a quorum was present.

DEE ANN MICKELSEN, CITY CLERK

la/dm
(Attachments – 2)



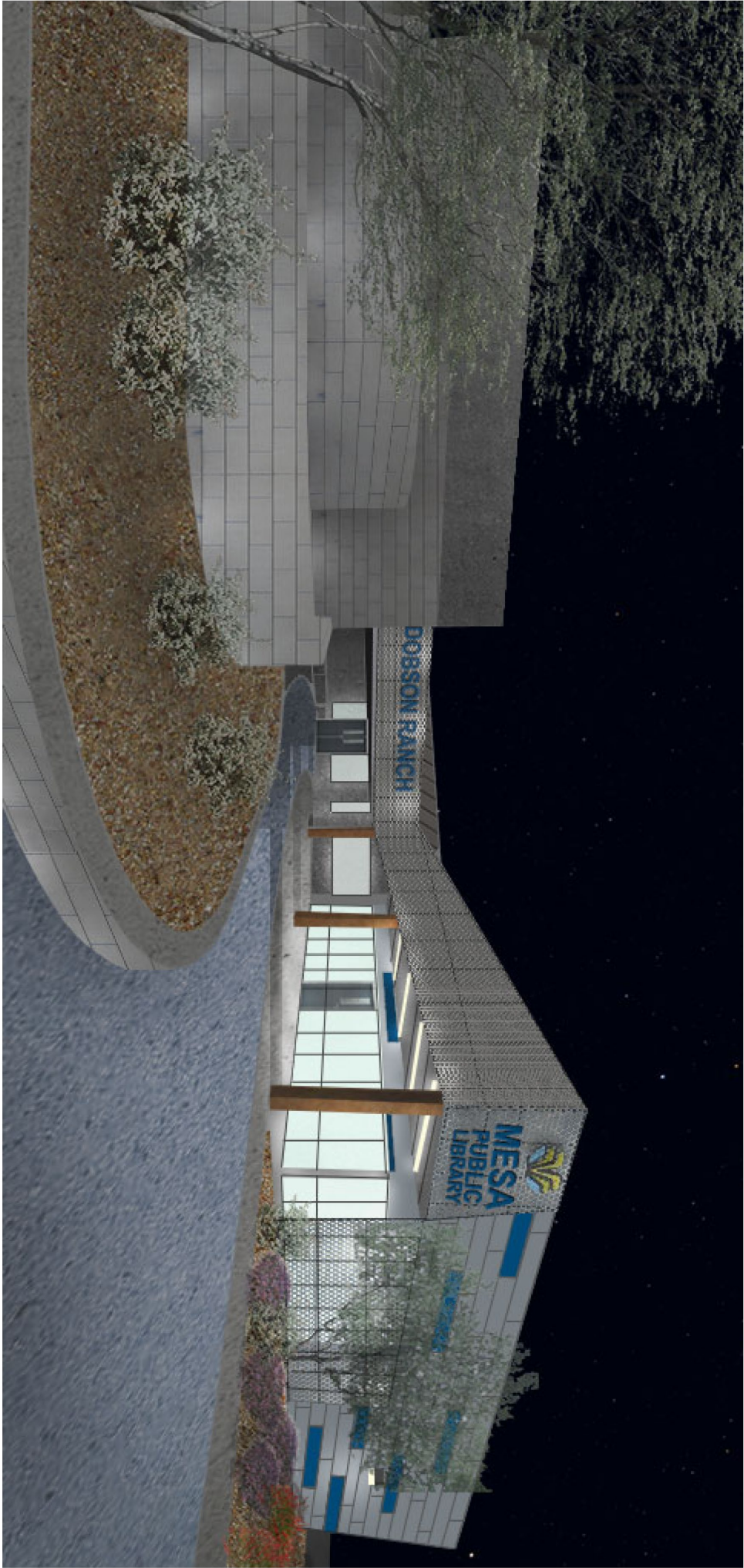
Dobson Ranch Library Improvements

2425 SOUTH DOBSON ROAD

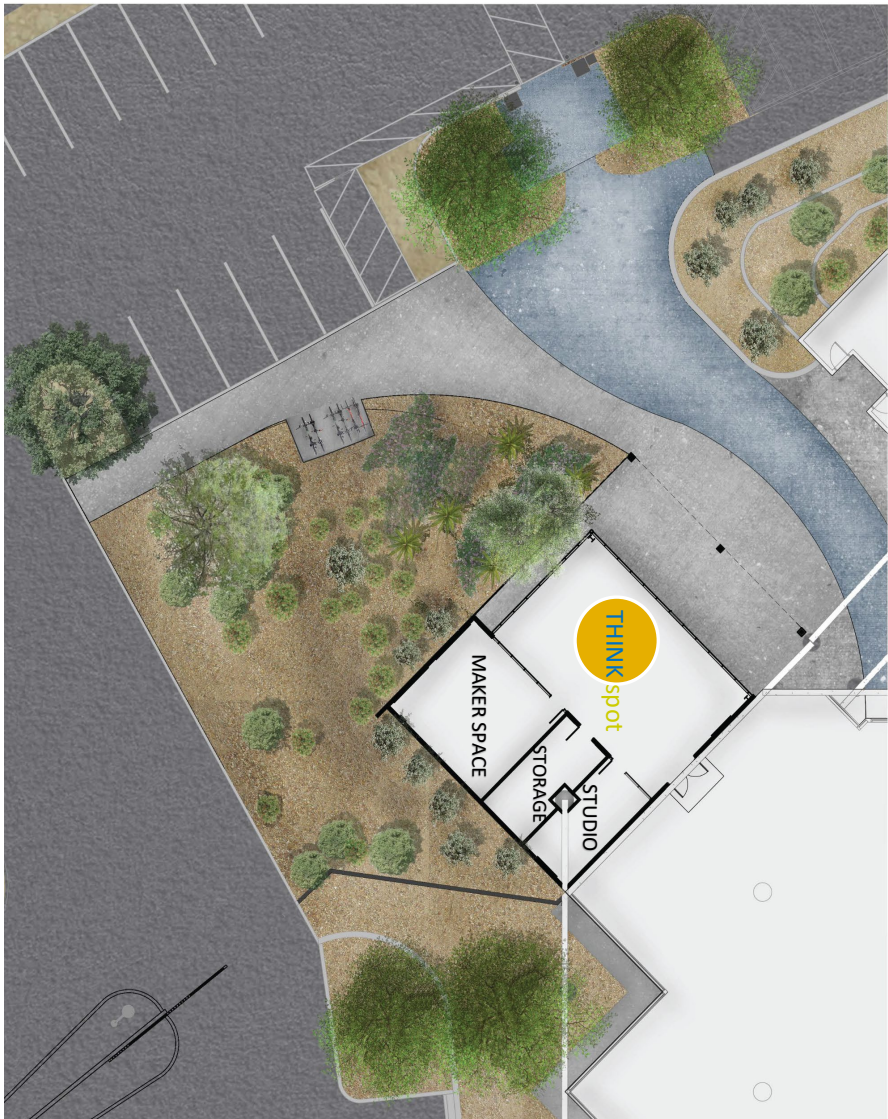




DOBSON RANCH LIBRARY IMPROVEMENTS
CITY OF MESA



DOBSON RANCH LIBRARY IMPROVEMENTS
CITY OF MESA





DOBSON RANCH LIBRARY IMPROVEMENTS
CITY OF MESA

FLOOR PLAN
0' 4'-0" 8'-0" 12'-0"

research.n



Active Transportation

Council Study Session // November 15, 2021



MESA MOVES
CONNECTING PEOPLE TO PLACES



ESA MOVES

CONNECTING PEOPLE TO PLACES

CIP Project Definition

CIP Projects are major investments in new transportation infrastructure or major upgrades to existing infrastructure. This does not include routine maintenance or minor upgrades.

Active Transportation Infrastructure

- Shared Use Path – \$2M per mile
- Complete Street Enhancements
 - No Change to Curb - \$0.5M - \$2.0M per mile
 - Change to Curb - \$2.0 - \$10.0 M per mile

Project Types

Shared Use Path (off-street) Projects

- Canal, powerline or freeway right of way





ESA MOVES

CONNECTING PEOPLE TO PLACES

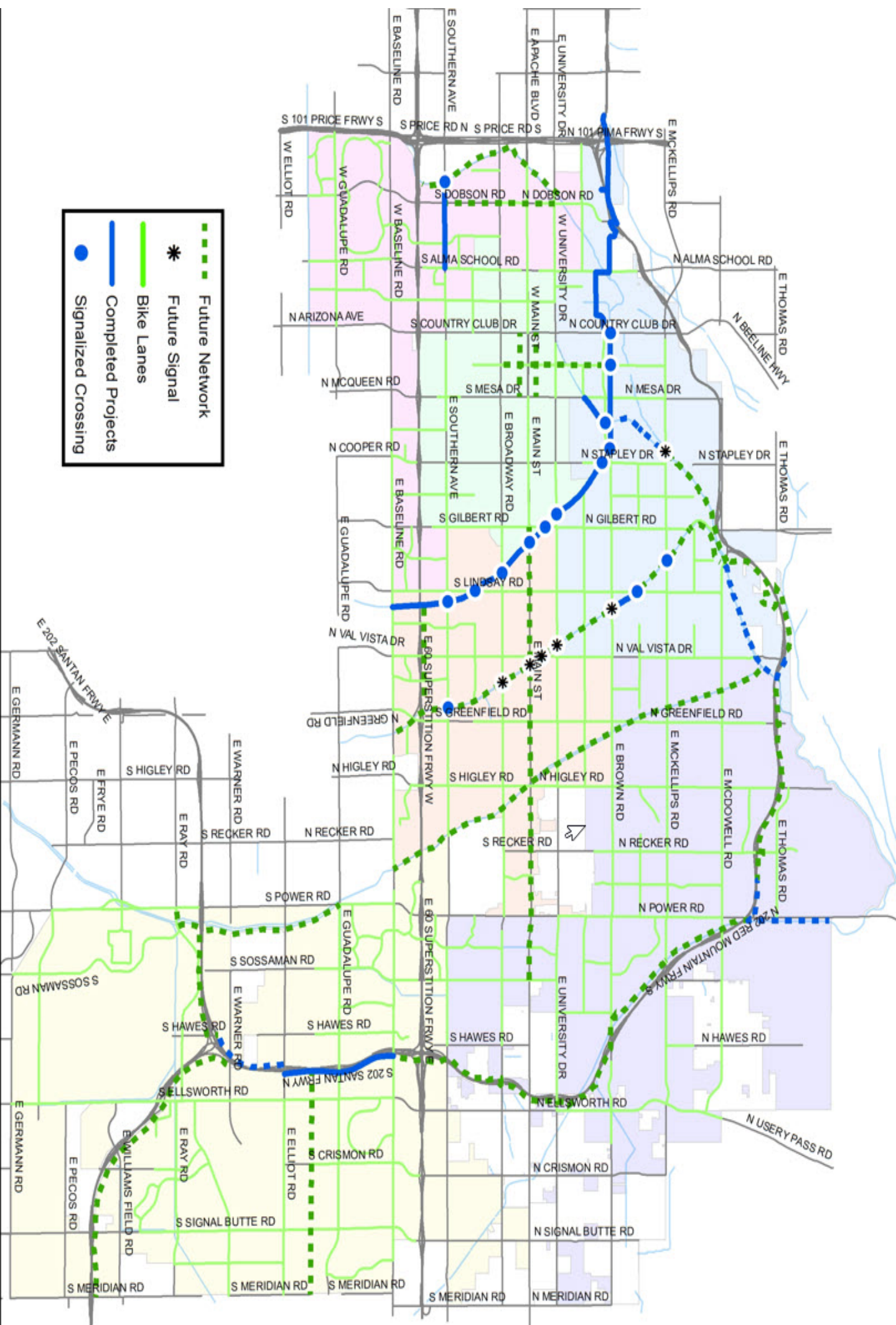
Project Types

Complete Streets

- On-street separated bike lanes
- Shared bike/pedestrian path



Bike and Ped Network





ESA MOVES

CONNECTING PEOPLE TO PLACES

Survey Summary

- Pedestrians want more off-street pathways
- Cyclists prefer both off-street pathways and on-street separated bike lanes
- Respondents prefer (3:1) more pathway mileage with minimal amenities



ESA MOVES

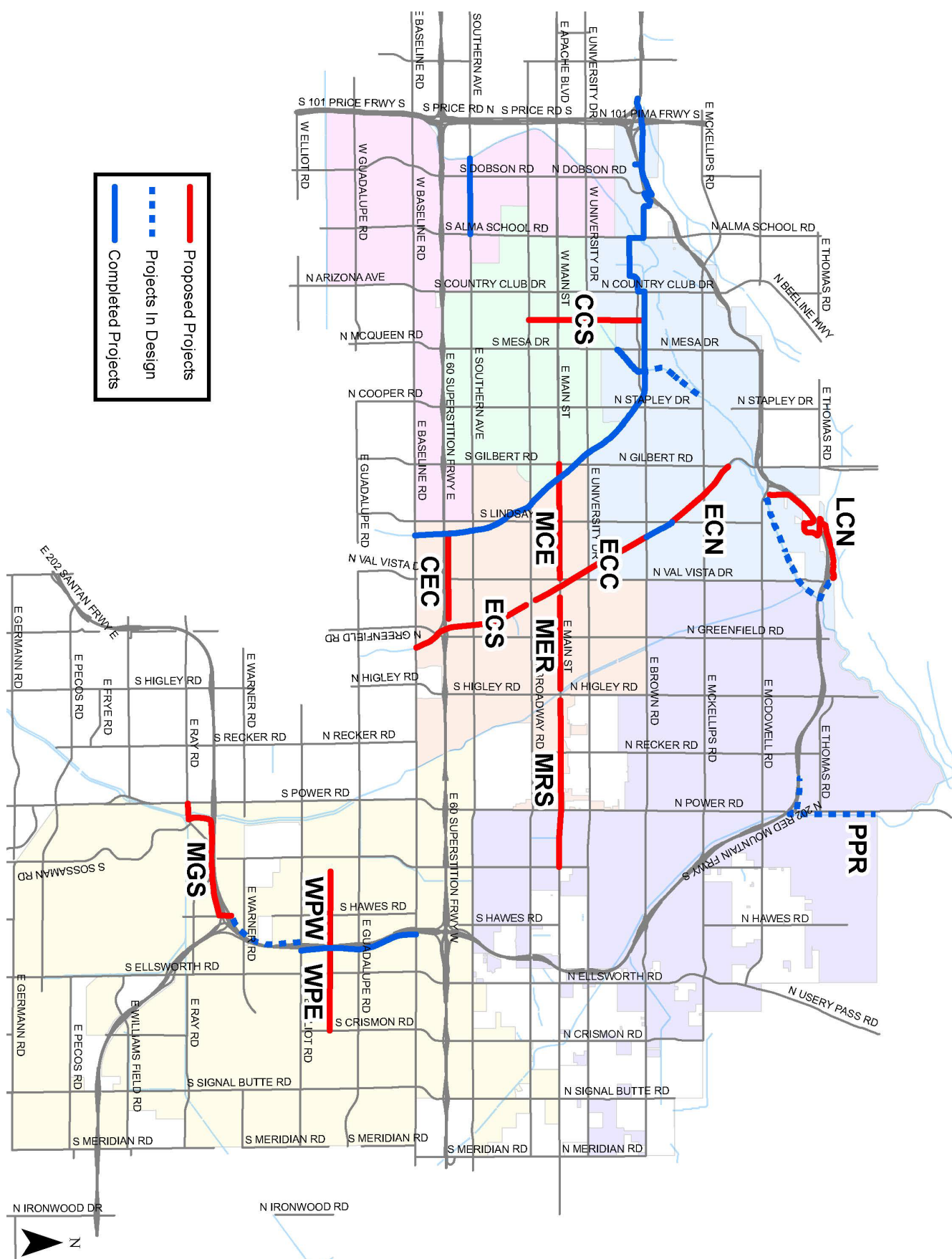
CONNECTING PEOPLE TO PLACES

Prioritization Criteria

Projects will:

- Connect into existing bike/pedestrian facilities (0-2 pts)
- Connect to parks/schools in Mesa (0-2 pts)
- Connect to retail/restaurants in Mesa (0-2 pts)
- Focus on off-street pathways along canals, power lines and freeways (0-1 pts)
- Focus on maximizing mileage instead of amenities

Proposed Mesa Moves Projects



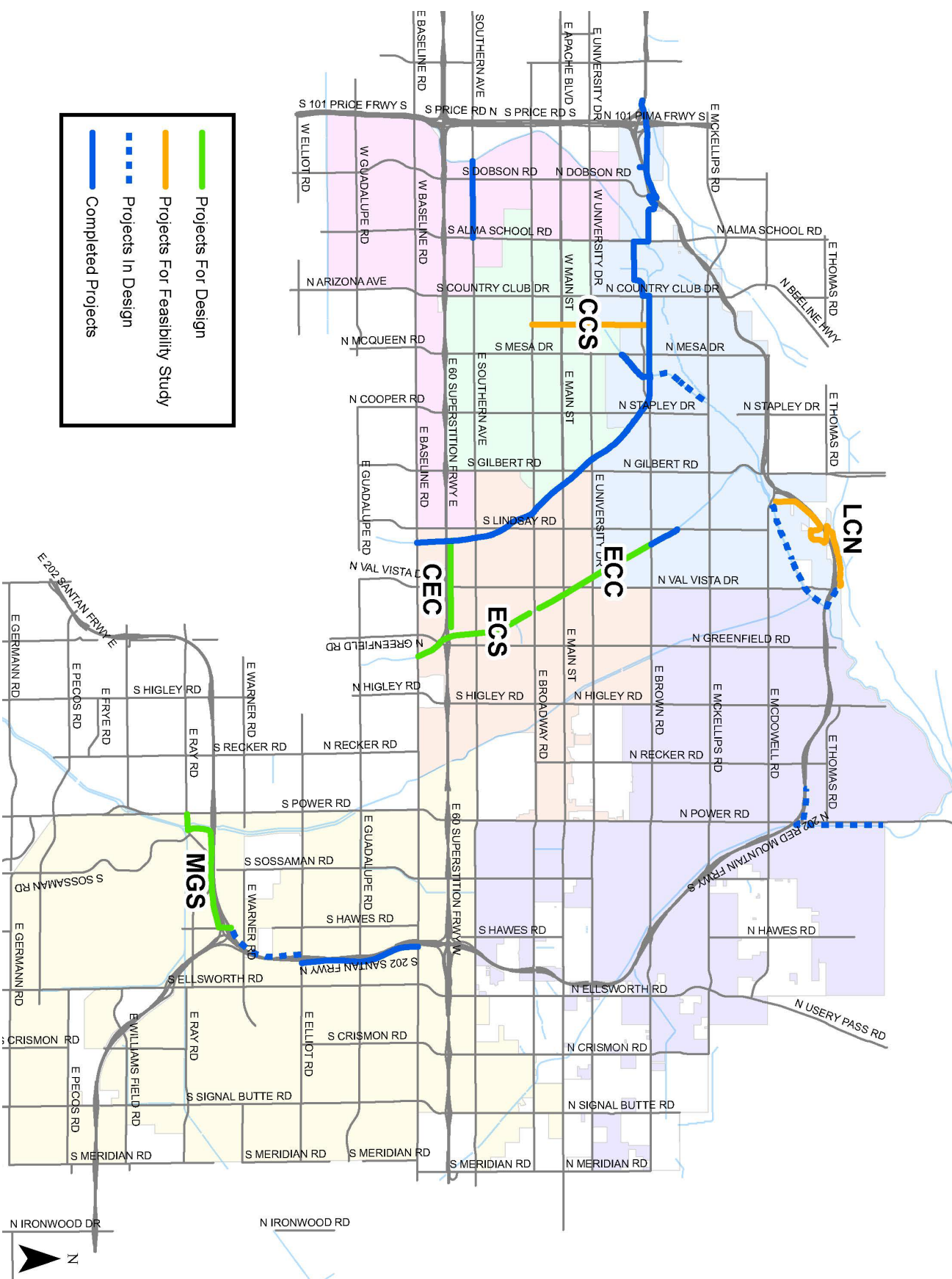
Prioritization Matrix

	Projects	Length (mi)	Cost (\$M)	Existing Facility Connection (0-2)	Connect to Parks/Schools (0-2)	Connect to Retail/Restaurants (0-2)	Off-Street (0-1)	Total
CCS	Center Street Complete Street	2.3	\$ 4.0	1	2	2	0	5
CEC	US60 - Consolidated to Eastern	1.6	\$ 2.6	2	2	1	1	6
ECC	Eastern Canal - Brown to Broadway	2.3	\$ 3.5	2	1	1	1	5
ECN	Eastern Canal - Lindsay to Gilbert	1.4	\$ 2.6	1	1	0	1	3
ECS	Eastern Canal - Broadway to Baseline	2.2	\$ 4.3	2	2	1	1	6
LCN	Lehi Crossing Phase 2	2.9	\$ 5.0	2	1	0	1	4
MCE	Main Street - Consolidated to Eastern	2.0	\$ 4.0	0	0	2	0	2
MER	Main Street - Eastern to RWCD	2.0	\$ 4.0	0	0	2	0	2
MRS	Main Street - RWCD to Sossaman	3.0	\$ 6.0	0	0	2	0	2
MGS	Mesa Gateway Phase 3	2.6	\$ 5.0	2	0	1	1	4
WPE	Western Power Line SUP (East of L202)	1.5	\$ 3.0	1	1	0	1	3
WPW	Western Power Line SUP (West of L202)	1.0	\$ 2.0	0	2	0	1	3

Green – Projects that are ready for design

Orange – Projects that need a feasibility study before moving to design

Proposed Mesa Moves Projects





ESA MOVES

CONNECTING PEOPLE TO PLACES

Staff Recommendations

Recommended Projects for Design & Construction

<u>Project Name</u>	<u>Length (mi)</u>	<u>Cost (\$)</u>
US 60 – Consolidated to Eastern	1.6	\$2.6 M
Eastern Canal – Broadway to Baseline	2.2	\$4.3 M
Eastern Canal – Brown to Broadway	2.3	\$3.5 M
<u>Mesa Gateway Phase 3</u>	<u>2.6</u>	<u>\$5.0 M</u>

\$15.4 M

Recommended Projects for Feasibility Study

<u>Project Name</u>	<u>Length (mi)</u>	<u>Cost (\$)</u>
Center Street Complete Street	2.3	TBD
Lehi Crossing Phase 2	2.9	TBD

Council Feedback



mesa•az



MESA MOVES
CONNECTING PEOPLE TO PLACES

www.mesaaz.gov/mesamoves

mesamoves@mesaaz.gov

research.n

