



COUNCIL MINUTES

February 11, 2015

The City Council of the City of Mesa met in a Joint Meeting with the Dobson Ranch Homeowners' Association Board of Directors at the La Casita Community Center on February 11, 2015 at 9:05 a.m.

COUNCIL PRESENT

Mayor John Giles
Alex Finter
Dennis Kavanaugh
David Luna
Kevin Thompson

COUNCIL ABSENT

Christopher Glover
Dave Richins

STAFF PRESENT

Christopher Brady
Jared Archambault
Melissa Randazzo
Dan Cleavenger
Scott J. Butler
Marc Heirshberg
John Wesley
Beth Huning
Matthew Clark
Kari Kent
Kari Kent
Jaye O'Donnell
Ian Linssen
Miranda DeWitt
Frank McRae
Dee Ann Mickelsen
Randy Policar
John Pombier
Jodi Sorrell
Debbie Spinner
Laura Hyneman
Lenny Hulme
Jeff McVay
John Meza
John Wesley

DOBSON RANCH BOARD PRESENT

Stacy Holmstedt
Sarah Funtowicz
Ron Magaw
Frank Mizner
Laurie Moe
Sandra Murray
Susan Powers
Bob Radisich

DOBSON RANCH STAFF PRESENT

David Jones
Joanna Loftus
Susan Richards
Craig Wilson
Jesse Wright

SUB-ASSOCIATION MEMBERS

Tim McElrath
Carolyn Goss
Don Kozak
Mary Palmer
Helen Robetoy

1. Welcome and Introductions.

Dobson Ranch Executive Director David Jones expressed appreciation to the Dobson Ranch Board of Directors and staff, Sub-Association members, and City of Mesa staff for attending today's meeting.

Dobson Ranch Board President Susan Powers introduced members of the Dobson Ranch Board of Directors. She recognized Vice Mayor Dennis Kavanaugh and presented him with an award for his extraordinary community service, outstanding efforts and accomplishments in service to his community and to the City of Mesa.

Vice Mayor Dennis Kavanaugh outlined the great history of the partnership between Dobson Ranch and the City of Mesa and the successes the collaboration has brought to the community. He thanked the Dobson Ranch Board of Directors for their support and recognition.

Mayor Giles stated that the Dobson Ranch Homeowners Association was one of the first Homeowners Associations (HOA's) and recognized what a successful model it has been for other HOA's.

City Manager Christopher Brady highlighted some of the current and future business and employment opportunities in Mesa and provided an update on the spring training facilities in Mesa. He expressed his appreciation to the Dobson Ranch Board of Directors and thanked them for their continuing partnership and support.

2. Development/Planning.

City Center Project

Development & Sustainability Project Manager Jeff McVay provided an overview of the City Center Project. He explained that the City Center Project will be a signature park in the heart of downtown Mesa. He outlined the design competition process which included presentations to the community and City Council, followed by the selection of the collaborative design team of Colwell Shelor/West 8/Weddle Gilmore. He stated that a unique architectural feature of the design is the Wind Dancer, which is eight stories tall, includes evaporative cooling and encompasses one acre of covered space.

Mr. McVay outlined the next steps, which includes contract agreements and a design process for the project. He added that the project could be a catalyst for additional downtown revitalization.

Mesa 2040 General Plan

Planning Director John Wesley expressed appreciation to Dobson Ranch for their outreach assistance during the planning phase of the Mesa 2040 General Plan. He explained that voters approved the General Plan in November 2014; that the plan focuses on character of areas; that one section of the Plan is devoted to maintaining neighborhoods; and that the Plan was designed to be more flexible about how neighborhoods change and evolve over time and that as needs change, the areas can change as well.

3. Transportation.

Dobson and Baseline (SW corner) – Flooding

City Engineer Beth Huning explained that over the last five years, most of the streets in Dobson Ranch have been reconstructed. She highlighted the circumstances surrounding the flooding of September 8 and stated that the Engineering Department is currently working on a design for storm water improvements in the area. **(See Attachment 1)**

Transportation Director Lenny Hulme indicated that vacor trucks will continue to be utilized to pump flood water out of the area until the storm water improvements are completed.

Guadalupe Road Project

Ms. Huning highlighted the Guadalupe Road landscape improvements. (See Attachment 1) She explained that one of the challenges related to these improvements is related to tall 69kV lines that have low hanging telecom fiber lines below them. She stated that Salt River Project potentially has some funds that they can allocate to the City to underground some of the lines and that staff is currently in discussions with them regarding such a project. She added that because the lines hang so low, the landscaping is limited to small, short shrubs and trees in order to keep them out of the power lines. She further stated that staff is looking at placing the lines underground in order to accommodate taller landscaping that offers more shade.

Fiesta District streetscape

Ms. Huning provided an update on the Southern Avenue Streetscape Project. **(See Attachment 2)** She stated that the City of Mesa has received federal grants to build additional park nodes, which will be located at the entrances to Fiesta Mall. She explained that the nodes create inviting spaces where people can gather.

Mr. Hulme outlined additional features of the nodes such as LED lighting and stamped asphalt, adding new color and lights, making it a more inviting space.

4. Economic Development.

Neighborhood Development - Fiesta Mall

Economic Development Deputy Director Jaye O'Donnell highlighted economic development efforts related to Fiesta Mall. She explained that the biggest challenge with redevelopment of Fiesta Mall is that there are five owners who also share all of the parking. She added that staff is working on finding a tenant for the vacant Macy's building and should have news within the next 30 days. She stated that the concept for the space is a mixture of office, specialty retail, residential, hospitality, and mixed use with an emphasis on density.

Ms. O'Donnell provided an update on the Centrica project which is 110,000 square feet that will be turned into hi-tech office space. She explained that staff worked with the developer to get the fiber optic lines from the street to the building. She added that because the fiber in the area is very robust, it is an attractive option for IT and financial service companies, both in terms of

location and available infrastructure. She stated that the streetscape and infrastructure improvement provides good economic development opportunities and incentives.

Ms. O'Donnell highlighted the \$2.3 million renovation that has just been completed at 827 W. Grove, creating Class A hi-tech office space. She added that this property has great visibility with a lot of economic development interest.

Ms. O'Donnell displayed the Economic Reporter, a quarterly newsletter published by the Economic Development Office which includes recent economic development and opportunities for future investment. **(See Attachment 3)**

5. Engineering.

Home Rule

City Attorney Debbie Spinner provided an overview of Home Rule. She explained that the Arizona Constitution places spending limitations on cities and towns; that voters approve Home Rule to allow the City to rule itself; and that without Home Rule, only a portion of the taxes authorized by voters could be utilized. She stated that while the City is still required to work within a balanced budget, adoption of Home Rule allows the City to use all the funds that it collects. She further added that Home Rule is presented to Mesa voters every four years, and in 2014 the voters approved Home Rule by 72%.

Water and Wastewater System Revenue Bonds

Water Resources Department Director Dan Cleavenger stated that in the 2014 Bond Election, voters approved \$494 million for water and wastewater projects. He added that the bonds will provide infrastructure for southeast Mesa to support growth and economic development, lifecycle replacement projects throughout the City, and contractual obligations to jointly owned facilities.

Mr. Cleavenger explained that \$316 million is for the new Signal Butte Water Treatment Plant. He stated that the plant will be located in southeast Mesa and will provide up to 24 million gallons of drinking water per day. He added that the City is currently in the design phase of the project.

Mr. Cleavenger provided information relative to the Val Vista Water Treatment Plant (VWVTP) and that it serves the western portion of the City; is jointly owned with the City of Phoenix; provides 90 million gallons of drinking water per day; and that the City has maintenance and capital improvement responsibilities to the plant.

Mr. Cleavenger stated that there are several wells that serve the Dobson Ranch area and will be re-drilled and upgraded, which will supplement the water that comes from the VWVTP.

Mr. Cleavenger explained that the Greenfield Water Reclamation Plant in southeast Mesa processes 4 million gallons of wastewater per day. He added that the City owns a portion of the plant with the Towns of Gilbert and Queen Creek.

Electrical and Gas System Revenue Bonds

Energy Resources Department Director Frank McRae explained that gas and electric projects are prioritized based on safety, reliability, and cost efficiency. He added by saying that bonds are one method used to finance the cost of infrastructure that have very long lives and typically serve more than one generation of customers.

Mr. McRae stated that in November 2014 voters approved gas and electric bonds to fund capital projects and that the bonds will cover system reinforcements, lifecycle replacement and growth system enhancements. He added by saying that the systems have a lifecycle between 20-40 years; that 2-4% of the infrastructure is replaced each year; that poles have a normal lifespan of 35 years; and that the City replaces approximately 3% of the poles each year.

Mr. McRae reported that a portion of the bonds approved for electric utilities will be utilized to convert overhead lines to underground lines, which have substantially fewer outages.

Mr. McRae explained that staff tries to coordinate projects with other departments in order to minimize the capital costs necessary for projects, and that bond money will not be expended unless there are new customers and new demands to meet.

6. Adjournment.

Without objection, the Joint Meeting with the Dobson Ranch Homeowners' Association Board of Directors adjourned at 9:55 a.m.

JOHN GILES, MAYOR

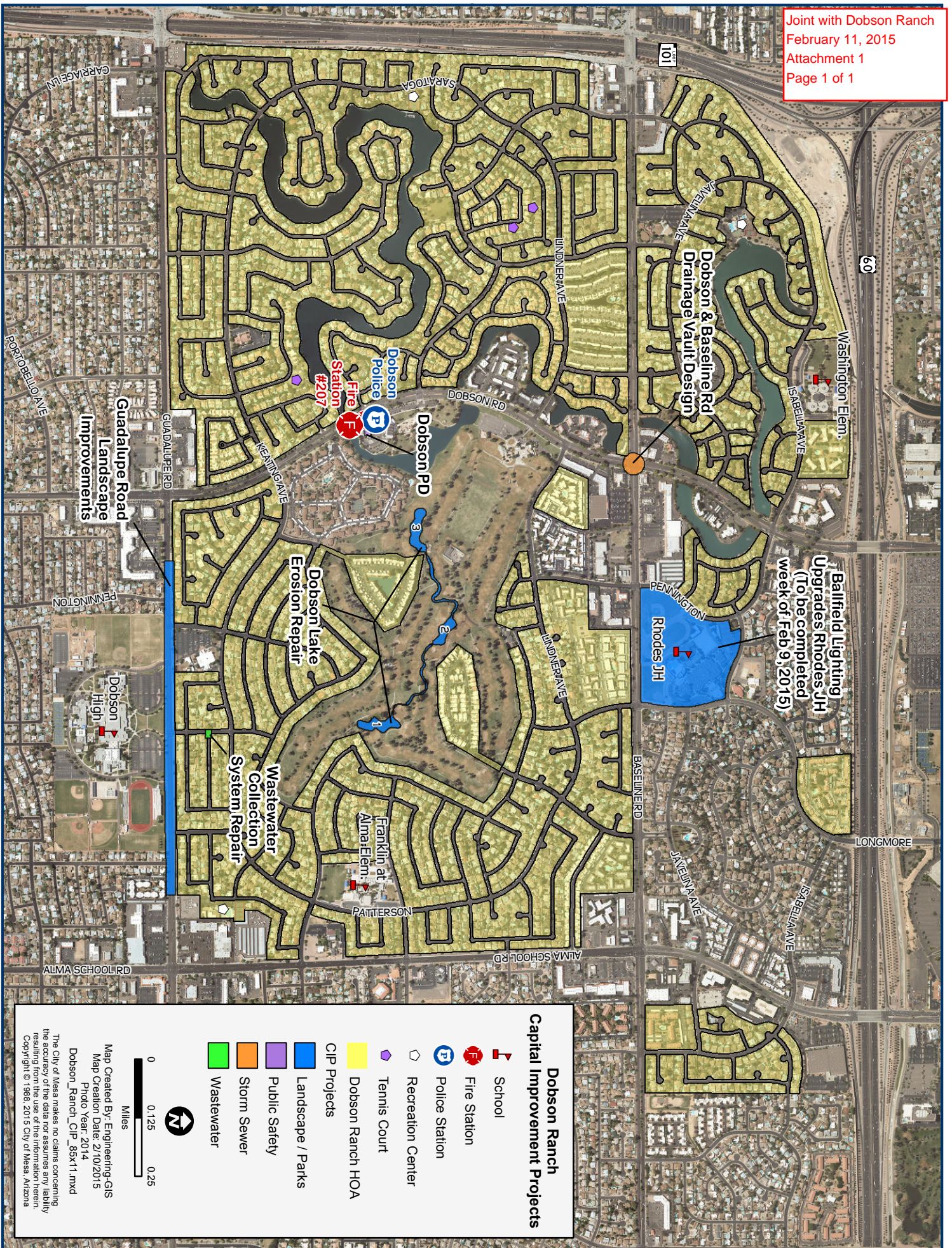
ATTEST:

DEE ANN MICKELSEN, CITY CLERK

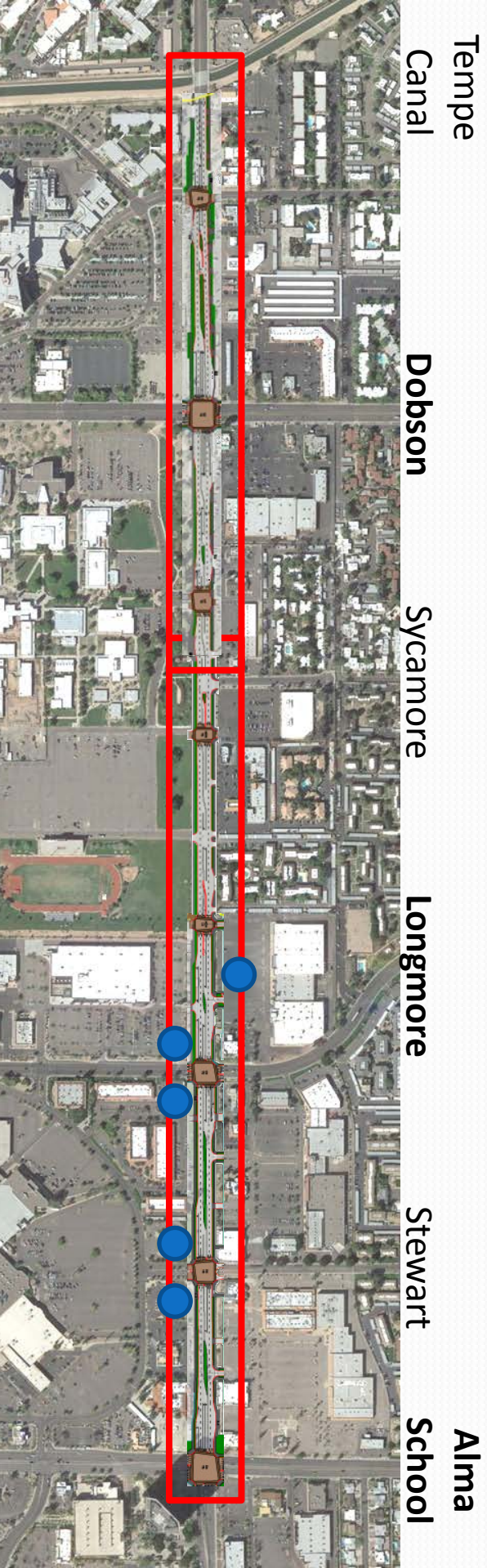
I hereby certify that the foregoing minutes are a true and correct copy of the minutes of the Joint Meeting with the Dobson Ranch Homeowners' Association Board of Directors held on the 11th day of February, 2015. I further certify that the meeting was duly called and held and that a quorum was present.

Dated this 11th day of February, 2015

DEE ANN MICKELSEN, CITY CLERK



Southern Ave Streetscape Projects



1. Southern Avenue Phase 1 – Sycamore to Alma School
2. Southern Avenue Paseos – w/o Longmore to Alma School
3. Southern Avenue Phase 2 – Tempe Canal to Sycamore



► STREAMLINED ZONING FOR
ELLIOT ROAD TECH CORRIDOR . . . 3



► MESA EDUCATES U 4



► CITY OF MESA ENTREPRENEURSHIP
PROGRAM 6

mesa·az

Economic Reporter

A QUARTERLY NEWSLETTER PRODUCED BY
THE CITY OF MESA OFFICE OF ECONOMIC DEVELOPMENT

FIRST QUARTER 2015

City of Mesa receives international accolades for economic development

In October 2014, the City of Mesa's Office of Economic Development was honored with three prestigious awards. The International Economic Development Council (IEDC) presented Mesa with Silver Excellence in Economic Development Awards in each of the following categories: Business Retention and Expansion, Public-Private Partnerships, and Partnerships with Educational Institutions. These honors were presented at an awards ceremony October 20 during the IEDC Annual Conference in Fort Worth, TX.

"We are truly honored to be recognized with three awards for economic development," City of Mesa Economic Development Director William J. Jabjiniak said. "These awards are an affirmation of the City's efforts to build a better Mesa."

The award for excellence in economic development in the category of Business Retention and Expansion (Single Event) was presented to Mesa for its retention strategy to keep the Chicago Cubs spring training program in Mesa.

The Public-Private Partnerships award was presented to the City of Mesa for its partnership with Phoenix-Mesa Gateway Airport and Able Engineering to design, finance and construct a new \$20 million, 191,000 sq. ft. manufacturing headquarters.

Finally, the award for Partnerships with Educational Institutions honored the City of Mesa for its successful recruitment of five private, non-profit, liberal arts colleges and universities, a direct result of three years of inspired vision and strategic business attraction efforts.

www.tinyurl.com/MesaIEDCawards



DriveTime and GO Financial announce major expansion in Mesa



In December 2014, DriveTime and GO Financial announced the expansion of their operations in Mesa. The affiliated companies will lease two neighboring buildings, located at 7457 and 7465 E. Hampton Ave., and hire as many as 700 new employees by the next three years.

DriveTime will expand its operations center at the existing facility into the 49,500 sq. ft. building at 7457 E. Hampton Ave. and GO Financial will relocate its corporate offices and operations center to the 58,000 sq. ft. building adjacent to the operations center.

The expansion by the two companies will increase their combined facilities in the Superstition Springs area of Mesa to approximately 233,000 sq. ft. with capacity for more than 1,500 employees. The companies expect to spend more than \$12 million on improvements and equipment for the new facilities and expansion.

"Both DriveTime and GO Financial have grown and thrived in East Mesa, so expanding our presence there is good for our businesses," Steven Johnson, General

Counsel of GO Financial said. "Attracting and retaining quality people is key to our growth and our operations center in East Mesa has proven to be a place where employees want to develop their careers."

DriveTime is the nation's largest auto dealer helping people with credit issues find and finance a vehicle. Headquartered in Phoenix, AZ, DriveTime currently operates 122 stores in 48 markets, with more than 75 used cars available at each dealership. www.drivetime.com

GO Financial is a subprime auto finance company founded in 2011. GO Financial provides subprime financing products and services to over 2,500 independent dealers in 46 states and employs over 275 people at its offices in Mesa, AZ, and across the country. www.gofinancial.com



DriveTime®

Economic Development Advisory Board

MEMBERS

Laura Snow - Chair, Banner Health

Tony Ham - Vice Chair,
Retired, The Boeing Company

Terry Benelli, Local Initiatives
Support Corporation (LISC)

James Christensen,
Gateway Commercial Bank

Dominic Perry, GPE Advisors

Jeff Pitcher, Ballard Spahr, LLC

Steve Shope, Sandia Research

Jo Wilson, Benedictine University

EX OFFICIO

John Giles, Mayor, City of Mesa

Chris Brady, City Manager,
City of Mesa

Richard Adams, GPEC
Representative, Southwest
Business Credit Services

Brian Campbell,
GPEC Representative,
Campbell Law Group, Chartered

Jeffrey Crockett, GPEC
Representative, Brownstein Hyatt
Farber Schreck, LLP

Sally Harrison,
Mesa Chamber of Commerce

STAFF

William Jabjiniak, Economic
Development Department Director

The Economic Development
Advisory Board meets the first
Tuesday of every month at 7:30
AM in the Lower Level Council
Chambers (57 E. First St.). All
meetings are open to the public.



The Quick Jab by Bill Jabjiniak

Making Mesa a premier sports tourism destination

On behalf of the City of Mesa Economic Development staff, allow me to wish you a very Happy New Year.

As 2014 drew to a close, I reflected on the many accomplishments the City of Mesa realized during the past 12 months, particularly in the area of tourism development:

- Chicago Cubs broke attendance records hosting nearly 214,000 fans during a 15-game schedule at their new spring training home Cubs Park;
- Hohokam Stadium renovations neared completion for the new spring training home of the Oakland Athletics; and
- Sheraton Mesa Hotel broke ground in April and opens February 2015.

Looking forward, 2015 promises to be equally exciting as Mesa celebrates these amenities and the teams, visitors, and employees that accompany them.

Hohokam Stadium gets a makeover

A year-long project to renovate Hohokam Stadium and the Fitch Park training facility for the Oakland Athletics is complete.

The stadium has been painted and re-branded with the Oakland Athletics green and gold color scheme and features refurbished seating, a state-of-the-art 56 ft. by 29 ft. scoreboard and an expanded clubhouse. The bleachers along the foul lines have been replaced with party decks.

Improvements to Fitch Park, which will serve as the year-round home for Oakland Athletics Minor League Training and Player Development Operations, have expanded the size of the training facility to a total of 55,433 sq. ft.

The grand opening for Hohokam Stadium will be February 21, from 11 AM to 5 PM. The Athletics' first game in the stadium will be against the San Francisco Giants, Tuesday, March 3, at 1 PM. Tickets can be purchased at www.tinyurl.com/AthleticsSpringTrainingTickets.



With both the Athletics and the Cubs spring training facilities in Mesa, the economic impact for the City will be remarkable. A 2009 study by Elliott Pollack shows that the Cubs alone have a \$137 million economic impact for the state and a large portion of those dollars are spent in Mesa. Today, the average total attendance at both parks combined is expected to be as many as 19,000 fans.

Sheraton Mesa Hotel

Soon to follow the completion of the Athletics' facility, will be the opening of the Sheraton Mesa Hotel located next to the Chicago Cubs spring training facility and Mesa Riverview Park. Slated to open February 5, the four-star hotel will have 180 guest rooms, more than 37,000 sq. ft. of indoor and outdoor function venues, and will house restaurants and retail shops. www.tinyurl.com/SheratonMesaHotel

Furthermore, the City is considering the development of additional sports tourism-related assets for youth, amateur, and collegiate tournaments. Visit Mesa is conducting a feasibility study for a multi-field sports complex in Mesa. Such a facility could be a 20- to 25-field sports complex and would generate many hotel room bookings and create significant economic impact annually.

The New Year's resolution for Mesa's Office of Economic Development is to focus on recruiting and expanding high quality economic development projects – like sports and tourism amenities – that generate capital investment and create quality jobs in Mesa.

Contact me at William.Jabjiniak@mesaaz.gov with questions or comments. Thank you for your continued support.

Pacific Seafood Group buys Mesa land for distribution facility

Pacific Seafood Group purchased 5.9 acres in Mesa at 460 W. McKellips Rd. near Country Club Dr. south of Loop 202 for \$1.4 million, in November 2014. The company is exploring building a 33,000 sq. ft. distribution center. The facility would create 50 jobs and contribute \$6.5 million in capital investment. Oregon-based Pacific Seafood Group is a family-owned, vertically integrated seafood processing and distributing company employing 2,500 people across seven states. For more information, visit www.pacseafood.com.



FUJIFILM expands Mesa facility

FUJIFILM Electronic Materials U.S.A., Inc. (FEUS) recently announced the expansion of its current southeast Mesa facility. As part of its Mesa operations, FEUS purifies, blends and packages chemicals for the semiconductor industry. The project, expected to generate additional jobs for the area, is scheduled to be completed early 2015.

"We have experienced solid growth over the last several years, and at the same time, we also need to support the continuously evolving technology needs of our market," Scott Klamm, Vice President of Operations, FUJIFILM Electronic Materials, U.S.A., Inc. said. "This investment is particularly important as it expands on existing high purity clean room laboratory space and provides the additional state-of-the-art metrology equipment needed to allow FEUS to continue to provide the most advanced analyses for the high purity products produced at the Mesa facility."



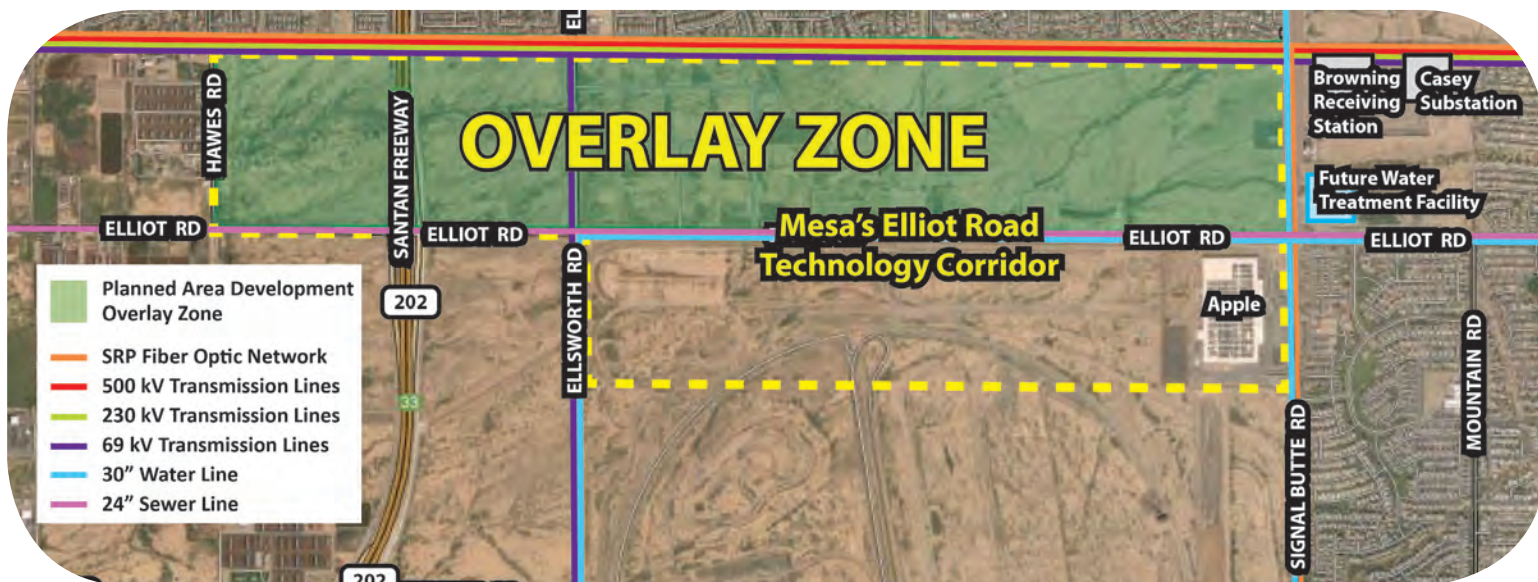
FEUS is a wholly-owned subsidiary of FUJIFILM Corporation with offices in Japan, the United States and Belgium, and several manufacturing and research and development facilities located worldwide. The company supplies advanced technology, chemistry and delivery equipment such as photoresists, cleaners and CMP slurries to the semiconductor and flat panel display fabrication market. For more information, visit www.fujifilm-ffem.com.

Streamlined zoning for Elliot Road Technology Corridor smoothes development process

Mesa City Council approved a rezoning case to create the Elliot Road Technology Corridor Planned Area Development Overlay in November 2014. The Overlay was put in place to reduce entitlement risk and expedite the development process for projects wishing to land in the Elliot Road Technology Corridor.

The Overlay is designated Light Industrial, but landowners can keep their current zoning until they are ready to develop their property, at which time they can opt-in to the Overlay. When opting in, landowners are only required to submit the proper paperwork for administrative approval. No further City Council action is required. Projects that might have taken up to six months, now may get an approval in as little as a few weeks.

"With significant transportation and utility infrastructure in place, the Elliot Road Technology Corridor is the ideal location for large technology companies and campuses," William J. Jabjiniak, Economic Development Director for City of Mesa, said. "Now with the streamlined entitlement process the Overlay brings, we have a very strong value proposition for high-tech companies looking to expand or relocate." www.mesaaz.gov/economic/techcorridor.





Higher Education Roundup

A.T. Still University announces joint research partnership

A.T. Still University (ATSU) and the National Association of Community Health Centers (NACHC), the nation's safety-net of community health centers, announced a joint research partnership

ATSU advancing interprofessional scholarly activity within Bureau of Primary Health Care supported community health centers. It will also aim to improve the health status of patients and communities across the nation, especially the medically underserved.

A.T. STILL UNIVERSITY

The partnership will entail developing, implementing and assessing evidence-based medicine guidelines; diagnosing, preventing and treating diabetes, obesity, skin cancer, metabolic syndrome, traumatic brain injury/concussions, spine pain and HIV/AIDS; evaluating oral health disease prevention and treatment programs; measuring and encouraging physical activity and its impact on health and wellness; and designing, organizing and evaluating population management teams and patient navigator models.

The joint research partnership will continue to foster a pipeline of quality medical professionals coming from A.T. Still's Mesa campus. "NACHC's partnership with ATSU over the years has yielded some of the most well-prepared and dedicated health care professionals, especially in service to vulnerable populations and communities," said Tom Van Coverden, president and CEO of NACHC.

NACHC currently supports ATSU in many ways, including access to clinical rotations, three of which are located in Arizona; introductions to potential funding partners; residency development; data gathering; student scholarship opportunities; and national exposure of ATSU's schools, programs, faculty and staff. www.atsu.edu

Benedictine University now offering criminal justice degree, additional athletic programs

Benedictine University's National Moser Center for Adult Learning now offers an affordable Bachelor of Arts degree in Criminal Justice in Arizona. Adult students admitted into the program will receive a discounted tuition rate of \$335 per credit hour – a nearly 60 percent savings.

Benedictine University at Mesa Redhawks will add softball and men's basketball beginning in the fall of 2015. Student-athletes who play for high school or community college softball or men's basketball teams are encouraged to schedule an appointment to visit the university to see what Benedictine has to offer.

The Redhawks competed with great success in their inaugural season for men's and women's golf and cross country this fall. Men's and women's tennis and volleyball will compete for the first time this winter and spring. The University has applied for membership with the National Association of Intercollegiate Athletics.



Benedictine will also host a series of events for students interested in learning what a private, Catholic values-based education has to offer. "Saturday Preview Days," which are designed for prospective freshmen and their parents, will be held from 9 AM-12 PM on January 10 and February 7 at Gillett Hall, located at 225 E. Main St. in Downtown Mesa. "Preferred Visit Day" – an event held specifically for prospective undergraduate students who want to find out more about Benedictine University – has appointments available for students at 10 AM-12 PM and 2 PM on January 19 at Gillett Hall. For more information, visit www.ben.edu/mesa, contact (602) 888-5533 or mesa@ben.edu.

Chandler-Gilbert Community College announces new program and fundraiser

Chandler-Gilbert Community College (CGCC) Williams Campus has launched a new Emergency Response Operations-Paramedicine education program in partnership with Phoenix College. The nine-month program offers classes two days per week and is designed to have minimal impact on most East Valley firefighter schedules. Completion of general and specialized education requirements will give students the courses needed for a degree in Emergency Response Operations (ERO). Additionally, the program prepares students for certification testing with the National Registry of Emergency technicians at the level of paramedic. For more information, visit www.cgc.edu/paramedic.

Save the date for CGCC's fifth annual scholarship fundraising event "Champagne, Chocolate and All That Jazz" on Friday, February 6. Enjoy morsels from local vendors while bidding on more than 50 items in a silent auction. Sponsorships are available. Learn more at www.cgc.edu/champagne.

Mesa Community College

50 year anniversary celebration

Join Mesa Community College (MCC) for a yearlong celebration of its 50 years as an educational partner with the City of Mesa. A 50th Anniversary website, www.mesacc.edu/50, features event information and facts about MCC's proud past.



New Center for Urban Agriculture enriches students, teachers and community

MCC received a U.S. Environmental Protection Agency environmental education grant to develop a Center for Urban Agriculture. The Center will establish a new degree program, develop STEM-infused environmental education models for K-8 teachers and students, and host community education workshops.

"We are truly excited by the prospects of working with industry and education partners across Greater Phoenix and the state," Dr. Shouan Pan, MCC president said. "The Center provides students with a living classroom in which to gain a hands-on understanding of science and the environment."



Also, MCC now teaches Aquaponics, an advanced form of aquaculture where fish provide nutrients to grow plants, which in turn filter water to sustain fish. For information and workshop details, visit www.mesacc.edu/cua.

Concurrent enrollment program with Maricopa Community Colleges and Upper Iowa University

A new program is now available through Maricopa Community College's nursing program and Upper Iowa University's (UIU)

department of nursing. In addition to the existing RN-BSN option with UIU, a concurrent enrollment program (CEP) has been launched. This program allows students interested in earning an associate's degree with the Maricopa Nursing® Program to concurrently enroll with UIU, to complete a Bachelor of Science degree in Nursing (BSN).

UIU's CEP partnership includes Chandler-Gilbert Community College, Mesa Community College and Scottsdale Community College, with the first group of students beginning spring semester 2015. UIU will add Glendale



Community College as a fourth partner in the fall of 2015. To support the addition of the CEP program, UIU has hired an Academic Advisor to work exclusively with CEP students. UIU has enrolled an initial cohort of 34 CEP students and is confident the program will continue to see increased demand and growth. www.tinyurl.com/UIU-MesaCampus

Wilkes University

Offering scholarships

As a sign of its commitment to serve the educational needs of Mesa and the Greater Phoenix area, Wilkes University will award \$5,000 scholarships, applicable for two years, to the first 30 qualified transfer students to enroll in a business discipline bachelor degree program.

Wilkes is also offering additional scholarships, making it among the most affordable colleges in the region. In addition to the Founders Scholarship, the following scholarships are available:

- \$1,900 Maricopa Community College Transfer Scholarship awarded to admitted transfer students;
- \$1,000 Mesa Community College Honors Scholarship, awarded to up to five students who are members of Phi Theta Kappa;
- and the \$5,000 Mesa Counts on College Scholarship awarded to four students who are Mesa residents.



Classes are held at the Mesa Center for Higher Education. For more information, please contact Ryan Hess at Ryan.Hess@Wilkes.edu or 480-878-4407. www.wilkes.edu/mesa

Transferring credits

Wilkes and Maricopa Community Colleges have partnered to make it easy for community college students to transfer and complete a bachelor's degree in business. Majors include Accounting, Entrepreneurship, Finance, Management, Marketing, and Sports and Events Management. www.wilkes.edu/mesa

City of Mesa staffer earns Certified Economic Developer designation



In December 2014, Shea Joachim, Senior Project Manager, City of Mesa Office of Economic Development, passed the certification examination to receive the Certified Economic Developer (CEcD) designation. The two-day examination is a culmination of a minimum of five years of experience, hours of required classes, seminars and study in order develop core competencies across a wide breadth of topics necessary to be

a well-rounded and successful economic developer. Joachim was one of two, in a field of 18, to pass the test in December 2014.

The CEcD designation is awarded by the International Economic Development Council, and those receiving the CEcD are acknowledged around the world as having achieved the pinnacle of excellence in the field of economic development. www.iedconline.org

City of Mesa selects eight companies to participate in entrepreneurship training program

During November 2014, the City of Mesa selected eight entrepreneurs to participate in the Business Academy at LAUNCHPOINT, a free program to train entrepreneurs in a variety of methodologies, to validate business ideas, and to position their companies for funding opportunities. The program runs through May 2015, and is being held at LAUNCHPOINT, Mesa's Technology Accelerator, located at 6113 S. Kent St.

The selected entrepreneurs come from diverse backgrounds – from a seasoned veteran of the U.S. Armed Forces to a 16-year-old young man. The Business Academy at LAUNCHPOINT will help these entrepreneurs develop their businesses and prepare their pitches for funding. The curriculum will be delivered in a series of modules with specific activities and tasks the participants will be required to complete. Key topics include Customer Discovery, Product-Market Fit, Team Formation, Mentor and Advisor Development, Personnel Management, Pitch Preparation, Identifying and Pursuing Funding Opportunities, and Networking. Learn more at www.mesaaccelerator.com.

PARTICIPATING COMPANIES

Alternative Education at Home

Alternative Education at Home will teach parents how to use non-traditional education methods to successfully educate their children including online learning, blended learning, enrichment programs, homeschooling and early college. The website, www.alternativeeducationathome.com, will provide a roadmap for parents researching the many educational options available for their children.

Claw Master LLC

After creating two successful online businesses revolving around his love for claw machines and the resulting winnings of plush toys, 16-year-old Will Leinart has opened his third business, a small arcade inside a large shopping mall. Check out "Claw Master" on YouTube or visit www.trademyplush.com.

Codes Unlimited

Codes Unlimited sells game codes (used to create advantages beyond normal gameplay) to computer game enthusiasts for more than 100 different computer games from companies such as Facebook, Microsoft, Sony, Nickelodeon, Google Play, Apple and many others. The company uses a variety of payment options including PayPal, Bitcoin and credit cards, and is on track to hit \$3 million in sales this year. www.gametimezone.com

GoMechanic

GoMechanic has developed a smart phone application for automobile, RV and boat owners that provides instant access to the nearest mobile mechanics, mobile oil change companies and mobile detailing companies anywhere in the U.S. www.gomechanic.us

DTEKT, LLC

DTEKT, LLC develops smart-device technology to improve safety and flexibility for new homes. The company is currently developing smart sensor-based residential fire prevention technologies that will help detect household structure fires and will provide consumers with robust safety features to save lives, reduce injuries and minimize property damage. The company is also developing smart sensor-based appliances that will provide consumers with anytime-anywhere convenient access and control. www.dtekt.co

Movement Interactive, LLC

Movement Interactive, LLC is a new venture that has developed a patentable hardware and software solution designed to detect and report traumatic brain impact/injury in youth sports in real time. www.linkedin.com/in/ericluster

Rapid Rescue, LLC

Rapid Rescue, LLC links service contractors with consumers who require a specific service immediately. The company helps smaller-sized contractors reduce their idle capacity through very inexpensive, continuous marketing while providing on-demand service to consumers who have time sensitive repair needs. www.rapidrescue.repair

Thousand Themes, LLC

Thousand Themes, LLC is a graphic arts and apparel company that takes a custom concept from development to full production including t-shirts, marketing materials, e-commerce websites and home décor. The company reduces costs by eliminating middlemen and subcontractors and is developing new market channels and customers. www.thousandthemes.com



Able wins contracts worth more than \$9M, will expand facilities and add employees

Mesa-based Able Engineering, a leading aerospace maintenance, repair and overhaul service and FAA-approved Parts Manufacturer Approval (PMA) parts provider, has been awarded three separate five-year contracts worth more than \$9 million by the United States Air Force. The contracts are for the repair of parts for the Boeing KC-135 Stratotanker, which is the military's primary aerial refueling jet.

With these new Air Force commitments, Able now supports eight KC-135 contracts, covering aileron lockout mechanisms, flap offset gearbox assemblies, fillet flap double angle gearbox assemblies and various other gearbox assemblies.

To accommodate new growth, Able will expand its facilities by 50,000 sq. ft. and add 100 employees during the next 12 months to its existing 450 person workforce. www.ableengineering.com



Mesa's Iveda Solutions signs big deals

Over the last several months, Mesa-based Iveda Solutions, a pioneer in cloud-based video surveillance solutions, has inked multiple deals totaling more than \$3.7 million: a \$1.4 million contract to update and modernize communications, alarm control and video surveillance systems for the Taiwan Stock Exchange Center; a \$517,000 contract to update and modernize the video surveillance system at the Taiwan

Taoyuan International Airport; and a \$1.8 million contract to provide a video surveillance system for a 40,000-seat indoor stadium, also in Taiwan.

In a separate transaction, Iveda announced its partnership with

Hollywood-based Wolfcom Enterprises, a manufacturer of body-worn cameras in December 2014. The partnership will offer next generation integration of proprietary cloud technology into a body camera, enabling cloud storage and access to live video. The Wolfcom body cameras and cloud video storage will be available for distribution in January 2015.

Through Iveda's Sentir Platform, Wolfcom's body cameras will be able to transmit live streaming video instantaneously to the cloud without additional software or hardware. The added functionality of live video

will allow headquarters to assist an officer in distress during and ongoing event.

"We are pleased to see the success of Iveda," Jaye O'Donnell, City of Mesa Economic Development Deputy Director said. "As Mesa companies grow globally, Mesa benefits with capital investment and job creation in the community. In 2013, Arizona exports were \$19.4 billion and supported more than 96,000 jobs."

Iveda enables cloud video surveillance via its Sentir Software as a Service (SaaS) video management platform, utilizing proprietary video streaming and Big Data storage technology. Iveda uses a recurring revenue model by licensing Sentir to organizations for a plug-and-play cloud video offering to their customers. www.iveda.com

City of Mesa showcases Fiesta District streetscape improvements with lighting ceremony

The City of Mesa held a lighting ceremony showcasing the new streetscape improvements in the Fiesta District at the intersection of Southern Ave. and Alma School Rd. on December 16.

"This is an exciting and positive step for the Fiesta District," District 3 Councilmember Dennis Kavanaugh said. "The City of Mesa is working hard to revitalize the area with new light poles, streetscaping and now the addition of these distinctive new light-up signs. We are committed to once again making the Fiesta District a destination in Mesa."

In addition to the featured entrance monuments, the Southern Avenue Streetscape project seeks to create a uniquely identifiable area for Mesa that is economically vibrant, pedestrian friendly and an active urban destination. These improvements include transitioning Southern Ave. to four lanes from west of Sycamore Dr. to Alma School Rd., wider sidewalks, new behind the curb landscaping, new benches, street lighting, pedestrian lighting, trash receptacles, bike racks and traffic signals. Colored paving enhancements will also be added at the intersections of Alma School Rd. and Southern Ave., Southern Ave. and Stewart St., and Southern Ave. and Longmore Rd. Learn more at www.tinyurl.com/FiestaDistrict.



City of Mesa Office of Economic Development

PO Box 1466
20 East Main Street, Suite 200
Mesa, Arizona 85211-1466

Phone: 480.644.2398
Fax: 480.644.3458

www.mesaaz.gov/economic

EVENTS

JANUARY

- 13 City Council Swearing-In Celebration**
Mesa Arts Center
1 E. Main St., Mesa, AZ
6-8 PM
- 13 Wilkes University Graduation**
Mesa Arts Center, Nesbitt-Elliott Playhouse
1 E. Main St., Mesa, AZ
6 PM
www.wilkes.edu/mesa
- 14 East Valley Breakfast with the Governor**
Hilton Phoenix/Mesa
1011 W. Holmes Ave., Mesa, AZ
7:30-9 AM
Registration 7 AM
Register: www.tinyurl.com/BreakfastWithGovernor
- 19 Martin Luther King, Jr. Holiday**
City offices closed
- 22 AAED Legislative Luncheon on the Lawn**
Arizona Capital (Senate Side)
1700 W. Washington St.
Phoenix, AZ
11:30 AM-1 PM
www.aaed.com

FEBRUARY

- 3 State-of-the-City Breakfast with Mayor John Giles**
Mesa Convention Center
201 N. Center St. - Main Hall - Building C
Mesa, AZ
7-9 AM
Register: www.tinyurl.com/MayorStateOfTheCity
- 16 Presidents' Day**
City offices closed
- 21 Oakland Athletics New Spring Training Facility Hohokam Park Grand Opening**
1235 N. Center St., Mesa, AZ
11 AM-5 PM
Free Admission

MARCH

- Chicago Cubs and Oakland A's Spring Training Games**
www.tinyurl.com/CubsSpringTraining
www.tinyurl.com/AthleticsSpringTraining
- 7 Falcon Field Airport Open House**
4636 E. Fighter Aces Dr., Mesa, AZ
9 AM-2 PM
www.falconfieldairport.com

Beer Research Institute to open Mesa's first brew pub

Mesa's first brew pub, the Beer Research Institute (BRI) recently opened its doors at 1641 S. Stapley Dr. next to AMC Grand 24 theaters. Founders Matt Tretheway and Greg Sorrels renovated an existing building just north of Starbucks. BRI's handcrafted beers fall into two general categories: West Coast-style IPA-based beers and Belgian-style ales. The menu includes tacos, hamburgers and other pub foods with a Southwest twist.

www.thebeerresearchinstitute.com



Mesa offering solar incentive to residents and business property owners

Residents and business property owners in the City of Mesa's electric service area can reap the benefits of a solar pilot program which is being offered until June 30, 2015.

The solar incentive program offered by the Mesa Energy Resources Department provides incentives to qualified City of Mesa Electric Utility customers who install a solar photovoltaic system on their property. The program pays 20 cents per watt for up to five kilowatts (kW) or a maximum of \$1,000 for residential participants. Incentives for commercial customers will be limited to 20 cents per watt up to a maximum 75 kW (maximum of \$15,000).

In exchange for the incentive payment, the City receives the associated renewable energy credits and environmental benefits. The City also offers a variation of net metering where the Energy Resources Department buys back energy when the customer produces more solar energy than they consume. The net metering program is reviewed on an annual basis. For more information, visit www.mesaaz.gov/energy/solarpilotprogram.aspx.

Mesa Chamber sponsors Breakfast with the Mayor

The Mesa Chamber's Annual Breakfast with the Mayor is scheduled for 7 AM, February 3, at the Mesa Convention Center. Hosted by the Mesa Chamber of Commerce, this event will draw hundreds of community business leaders and residents to hear from Mayor John Giles the State of the City address and his plans for Mesa.

Tickets for the event may be purchased at mesachamber.org and sponsorships are available. For more information, contact Sally Harrison at sharrison@mesachamber.org.



City of Mesa Business Retention and Expansion Program

Beginning July 2014, the City of Mesa, in partnership with the Mesa Chamber of Commerce, began an enhanced Business Retention and Expansion Program designed to provide the City and the Chamber with an opportunity to better understand Mesa businesses' needs and challenges by conducting on-site visits. During visits, businesses have the chance to discuss challenges and future expansion opportunities, and to identify solutions regarding how the City or its partners can help facilitate their growth.

During the first three months, 60 Mesa businesses were visited representing healthcare, education, aerospace, technology and other industry segments. An additional 60 businesses will be invited for visits beginning January 2015. For more information regarding the program or to schedule a business visit, contact Andrew Clegg, Project Manager, at 480-644-3961, or Andrew.Clegg@mesaaz.gov.

Follow Us

You can follow us and engage in economic development discussion at the following locations:

-  • Twitter @MesaEconDev
-  • LinkedIn @ City of Mesa Office of Economic Development
- www.mesaaz.gov/economic