



COUNCIL MINUTES

May 26, 2011

The City Council of the City of Mesa met in a Study Session in the lower level meeting room of the Council Chambers, 57 East 1st Street, on May 26, 2011 at 7:32 a.m.

COUNCIL PRESENT

Scott Smith
Alex Finter
Dina Higgins
Dennis Kavanaugh
Dave Richins

COUNCIL ABSENT

Christopher Glover
Scott Somers

OFFICERS PRESENT

Chris Brady
Debbie Spinner
Linda Crocker

(Mayor Smith excused Vice Mayor Somers and Councilmember Glover from the entire meeting.)

1-a. Hear a presentation and discuss the Sustainable Communities Working Group.

Transit Services Director Mike James introduced Shannon Scutari, Director of Rails and Sustainability for the Department of Transportation and Teresa Brice, Executive Director of Local Initiatives Support Corporation (LISC) who displayed a PowerPoint presentation (**See Attachment 1**) highlighting the Sustainable Communities Working Group (SCWG).

Ms. Scutari provided a brief history of Proposition 400 and the Light Rail system. She said that some of SCWG partners include the Arizona Departments of Housing and Transportation and the Cities of Phoenix, Tempe and Mesa. (See Page 3 of Attachment 1) She remarked that the City has demonstrated that it is a leader in Intergovernmental partnerships and that by working together the Light Rail System can be taken to the next level.

Ms. Scutari advised that in order to determine the full financial impact of housing on residents, the cost of housing and transportation should be combined. She said that the combined costs of housing and transportation can be as much as 60% of a resident's income, which is higher than the usual 30% that is normally considered for housing costs.

Ms. Scutari stated that the Intergovernmental partnership between the State, non-profits and the private sector will focus on "placemaking." She explained that "placemaking" provides opportunities to create different types of housing and economic opportunities, which will make the Light Rail even more successful. (See Page 5 of Attachment 1) She said that young educated people are disproportionately drawn to certain cities and more likely to live in "closed in" urban neighborhoods. She added that these "closed in" urban neighborhoods are not something that is offered in Arizona. (See Page 6 of Attachment 1)

Ms. Scutari reported that the focus from the Federal level will be on “livability.” She explained that “livability” is when housing, transportation, and environmental pieces come together to compliment the daily needs of a neighborhood.

Ms. Scutari advised that SCWG is attracting the attention of investors who will assist in taking the working group to the next level. She said that investors outside of the State are also taking an interest in the SCWG and as a result \$20 million has been raised for loans. She reported that \$10 million was received from LISC and \$10 million was received from the Raza Development Fund. She added that the goal is to raise at least \$50 million. (See Page 8 of Attachment 1)

Ms. Scutari explained that the money received will be used to incentivize affordable residential development and other related development such as grocery stores, child care facilities and health care facilities in areas surrounding light rail stations. She said that project costs associated with ancillary development such as sidewalks, bike paths, shade structures and other community improvements would also be incentivized. (See Page 9 of Attachment 1)

Ms. Scutari invited the Council to a “Launch Celebration” on June 1 at 9:30 a.m. at the Papago Gateway Center.

Ms Scutari advised that Prop. 400 has been influential in providing the transportation infrastructure that the City has today. She said that now is the time to capitalize on the economic changes and demographic shifts in the community. She stated that both the aging “Baby Boomers” and the young “Millennials” agree that transportation and community development should be linked.

Ms. Brice reported that in 2007 LISC convened a community forum to discuss the sustainable future of the community and it was agreed that the City needs to grow differently. She said that there is a continuing financial burden on cities as they spread farther away from the established infrastructure. She said that alternatives to the previous development pattern needs to be offered and that the entire community needs to be educated on how development patterns can change and what the benefits are to them.

Ms. Brice advised that a group of 25 stakeholders were brought together from across the Valley and developed the following principles for Making Sustainable Communities Happen:

- Promote a variety of transportation options
- Mixed land uses
- Provide a range of housing choices
- Foster thriving economies
- Promote compact development
- Employ environmentally responsive design
- Make places safe
- Promote healthy living
- Encourage community engagement

Ms. Scutari advised that at the State level a Smart Growth Scorecard was developed and adopted by 87 cities and towns. She reported that the working group is drafting a Transient Oriented Scorecard that will connect the metrics based on the Making Sustainable Communities Happen to the funding. She said to be eligible for the funding the metrics on the scorecard will need to be followed. She added that the Arizona Department of Housing (ADOH) has created a higher level of points for low income tax credit housing, if the housing is within ½ mile of a Light Rail station.

Ms. Scutari stated that partnering with other cities for Federal funding demonstrates the City's commitment to Transit Oriented Development and makes the Light Rail system a success.

Councilmember Richins commented that one of the biggest challenges in Transit Oriented Development is financing. He stated that having funding in place presents an amazing opportunity for the City to have projects and Light Rail construction open at the same time. He expressed his support for the principles regarding housing choices, as the only housing choices in this market are typically single family homes and suburban apartments. He remarked that there are not many choices for the young, hip, urban residents.

Mayor Smith remarked that Mesa does not have a housing stock for "move downs." He said that many senior citizens live in Mesa and when they sell their homes there is no place for them to go. He added that the City could see empty nesters move into a more urbanistic, walkable lifestyle, where they can get to places using the Light Rail. He added that there have been discussions regarding the need for affordable diverse housing.

Ms. Scutari advised that this is an opportunity to ensure that there is diversity and funding to provide a mix of housing choices and allow people to live around the Light Rail line. She said this is an opportunity for everyone paying into the system to find housing choices around the Light Rail that will open up new markets and opportunities. She added that this will not be a gloried housing project and the diversity of the community will not be excluded.

Ms. Brice stated that the primary investors are mission driven entities. She advised that the investors will provide funds that meet a mix of income and will focus primarily on people who do not have access to opportunity. She said that access to these types of funds is outside the usual market driven demand. She added that the investors want to ensure that everyone in the community has access to the opportunities that the Light Rail provides.

Ms. Scutari said that the current economic situation provides a perfect opportunity for the City to capitalize on housing opportunities around the Light Rail. She said that there is a mix of income in the area and this would be an opportunity to offer residents different housing options.

Mayor Smith thanked Ms. Scutari and Ms. Brice for the presentation.

- 1-b. Hear a presentation, discuss and provide direction on a concept for a Creative Economy Fund, offering a process for non-profit organizations to apply for reduced rent for use of Mesa Arts Center facilities.

Arts and Culture Director Cindy Ornstein displayed a PowerPoint presentation (**See Attachment 2**) outlining the Creative Economy Fund that was developed to enhance the Arts and Culture environment in Downtown Mesa and at the Mesa Arts Center (MAC). She advised that currently the Department of Arts and Culture provides \$15,000 of in-kind support to the Founding Resident Companies (FRC). She said that support is provided in the form of rent reduction or marketing assistance. (See Page 2 of Attachment 2)

Ms. Ornstein advised that State and Federal cultural grant reductions have made the need for support even greater. She said that the sustainability of cultural organizations, especially the smaller organizations, have been threatened by the economy. She stated that this proposal will create an opportunity to attract new groups to both the MAC and downtown Mesa. (See Page 3 of Attachment 2)

Ms. Ornstein briefly highlighted the five primary goals of the proposal as follows:

- Enable organizations that do not currently use the MAC facilities to apply for reduced rental fees.
- Encourage cultural organizations to increase their engagement activities and develop new audiences.
- Incentivize longer-term relationships, rather than one-time use of the facility.
- Bring new programs and activities to the community.
- Generate new revenue by providing subsidized rental fee.

Ms. Ornstein explained that the proposal is for a Creative Economy Fund that will provide in-kind support, in the form of rent reduction to both new MAC rental users and the FRC's. She said the application will be a competitive process, administered by MAC staff with input from the Museum and Cultural Advisory Board. (See Page 5 of Attachment 2)

Ms. Ornstein said that \$25,000 of in-kind rental credit will be divided between the FRC's and new users. She stated that the FRC's have demonstrated a strong long-term commitment and in turn the MAC can show its commitment to them by helping them to grow and succeed. She added that \$10,000 in rental credit would be used for the FRC's and \$15,000 for other groups. (See Page 6 of Attachment 2)

Ms. Ornstein outlined the criteria for the Creative Economy Fund application and explained that new users must be non-profit cultural organizations that are presenting programs that incorporate arts and culture. In addition, she said that extra points will be provided to organizations seeking multi-use/multi-day use of the facility or incorporating education or community engagement as part of their project. (See Page 7 of Attachment 2)

Ms. Ornstein stated that current rental users would be required to expand an existing program or add a program that would deepen the audience's educational experience, increase active participation or engagement of audiences, or develop new audiences. She said that it is hoped that the new fund will encourage FRC's to find new ways to engage audiences or bring in new audiences that would be beneficial to the MAC and the downtown area. (See Page 8 of Attachment 2)

Ms. Ornstein advised that the next step is to develop detailed criteria, guidelines and rating tools that will be used to administer the program. She displayed a proposed timeline (See Page 9 of Attachment 2) and said that the season begins in the fall and organizations will need to know what they have to work with in order to plan their programming or extra activities. She stated that guidelines and materials will be produced in the coming month and the program will be formally announced and publicized in July. She added that the proposal deadline will be in August, with a panel review in September, and the announcement of awards in late September/October.

Councilmember Kavanaugh expressed his support for the proposal and said that the recommendation is a sound approach that could have a great return on investment for the MAC and the community.

Councilmember Finter also expressed his support for the proposal and remarked on the outreach efforts that have brought people into the downtown area. He said that the MAC is a community asset and he supports the staff in their efforts.

Councilmember Richins commented that he would like to see the MAC focus on children's groups and performances. He stated that these types of programs would bring in parents and grandparents that might not otherwise come to the MAC.

Ms. Ornstein stated that a family series for next year's performances has been created to attract families to the MAC. She said the program specifies non-profits however, it could involve people working with children. She advised that the reason the proposal is limited to non-profits is that the \$25,000 in-kind credit will be used up quickly if one or two major groups are attracted. In addition, she said as the program grows more organizations and for-profit organizations can be included. She explained that if a for-profit community organization wants to use the space they can find a non-profit group to be a fiscal agent to apply and support them in their application.

Councilmember Richins advised that Jeanne's School of Dance has a little studio where they teach the children for 6 months and then hold a small recital. He said the dance school does not charge or attempt to make money on the recital as it is an opportunity for parents to see what the children have learned. He requested that as the program progresses that staff consider focusing on these types of activities in order to put the community back into the MAC.

Councilmember Kavanaugh commented that the partnership with the Mesa Arts Center Foundation helps provide performance dates for groups such as Jeanne's School of Dance, as an educational institution.

Ms. Ornstein stated that schools and educational institutions can go to the website to obtain information on how to apply for the Arts and Cultural Education Sponsorship (ACES) program that supports performances by educational organizations at the MAC.

Councilmember Kavanaugh stated that corporations or organizations such as the Arizona Commission for the Arts or the Piper Foundation, who see value in the arts, could possibly help supplement City funds. He said this program is an innovative approach among Arizona cities to incentivize and support the Arts.

Mayor Smith expressed his support for encouraging current users to expand their programs however, he cautioned staff not to cut off organizations that have “hung on” through the tough times in an effort to bring in new organizations.

Ms. Ornstein advised that there have been discussions with the FRC regarding ways that organizations can continue to participate. She stated that it has been determined that the FRC’s can create free or inexpensive activities in order to continue their participation.

Discussion ensued regarding how to encourage organizations to expand and create new programs without “pushing them off a cliff.”

Mayor Smith thanked staff for the presentation.

1-c. Hear a presentation and discuss the Five-Year Capital Improvement Program 2011-2015.

Assistant Budget Director Candice Cannistraro displayed a PowerPoint presentation (**See Attachment 3**) highlighting the Preliminary Five-Year Capital Improvement Program. She said that the Preliminary Five-Year Capital Improvement Program is available on the budget page of the City of Mesa website.

Ms. Cannistraro advised that the Capital Improvement Program (CIP) is a multi-year planning tool that relates to both the growth and the replacement of capital infrastructure needs. She said that the Council will appropriate the first year of the plan as part of the 2011/12 budget adoption in June. She also said that the five-year CIP includes funding sources such as City bonds and local and regional funds. (See Page 2 of Attachment 3)

Ms. Cannistraro stated that the CIP provides a schedule of all the capital improvement bond projects that have been approved by the voters. She said that General Obligation Bond projects have current bond authority and do not require any future authority for those projects. She noted that this was not part of last year’s plan.

Ms. Cannistraro reported that future bond needs are forecasted for utility projects. She pointed out that some utility bonds have current authorization while some will need future authorization.

Ms. Cannistraro advised that regional funding is received through a variety of sources such as Federal Grants, State Grants, Light Rail Reimbursement and Regional Transportation Program Reimbursement (RTP). She said that RTP’s are the street projects that are part of Proposition 400.

Responding to a question from Mayor Smith, Ms Cannistraro explained that Light Rail Reimbursements are received from costs fronted by the City for the Central Main Street Corridor development. She said the costs include land acquisitions as well as the cost of engineering staff.

City Engineer Beth Huning explained that the overall cost of the Light Rail Project is \$200 million and is funded by a \$75 million Federal grant and Regional funding. She said that as part of the project METRO has requested that the City provide services to support the project. She stated that staff will be assisting with land acquisitions along the Central Main Street Corridor and the City will be reimbursed for those costs. In addition, she said the City is reimbursed for services provided by a project manager, real estate personnel, public relations staff, and staff in the Engineering and Transit Services Departments. She added that an Intergovernmental Agreement (IGA) with Rural Metro will be before the Council on June 27.

Capital Improvement Project Administrator Anthony Araza briefly highlighted the following five-year CIP projects:

- Cubs Spring Training Facility (including parking and infrastructure)
- Public Safety – Fiesta District Police Substation
- Central Mesa Corridor Light Rail Extension
- ASU Polytechnic Street & Utility Infrastructure
- Mesa Dr. & Southern Dr. Intersection (street projects, aging utility infrastructure)
- Broadway Rd.; Power to Hawes (new pavement, storm drain improvement; street lights & landscaping)
- Power Rd.; San Tan Freeway to Pecos Rd. (joint project with Maricopa County & Town of Gilbert)
- Utility & Roadway Improvements at Elliot Rd. and Signal Butte Rd. (water, wastewater and street improvements)

Mr. Araza advised that transportation projects have the most complex and diverse funding sources and include; Federal grants, Maricopa Association of Governments (MAG) Regional Funds, Street Bond Funds, Highway User Revenue Funds (HURF) and Street Sales Tax.

Responding to a question from Mayor Smith, City Manager Chris Brady explained that in regards to the joint project on Power Road, the City of Mesa is the lead agency for all phases of land acquisition and construction.

Discussion ensued regarding the costs associated with the Power Road, San Tan Freeway to Pecos Road project and the effects it will have on the facilities in the area which include the entryway into Gateway Airport and ASU Polytechnic.

Ms. Huning advised that an IGA between the City of Mesa, the Town of Gilbert and Maricopa County will be coming forward that will include the cost sharing aspects.

Mr. Araza briefly highlighted the five-year Water Resources and Energy Resource projects as follows:

- Replacing Aging Infrastructure
- Utility & roadway improvements (Elliot Rd. and Signal Butte Rd.)
- Improvements at Pasadena, Brooks & Lindsay Reservoirs
- Southeast Water Reclamation Plant Improvements (Power & Baseline Roads)
- Lehi Crossing Lift Station & Wastewater line
- Gas - Gate Station 3; Power Rd. 8-inch main extension
- Gas - Regulator Stations; 4-inch main
- Gas - Replace aging infrastructure (Magma and west Mesa neighborhoods)

- Electric - 4kV to 12 kV conversion
- Electric - Kellwood substation (Broadway Rd & Extension Rd.)
- Electric - Transmission upgrades (replacement of wooden poles)

In response to a question from Councilwoman Higgins, Water Resources Department Director Kathryn Sorensen explained that the Lehi Crossing Lift Station is a regional lift station that will serve not only the Lehi Crossing Development but the Lehi Region as well. She advised that the Lehi Region is currently on a septic system and that the infrastructure was sized so that the region could be moved onto the City Sewer System. In addition, she said that Impact Fees are being used to cover the costs of the lift station.

Responding to a question from Mayor Smith, Energy Resources Department Director Frank McRae reported that the electrical conversion is approximately 75% to 80% complete. He advised that some substations will also be converted and that the project should be completed in 2 to 3 years.

Councilmember Finter commented that the original CIP is 25 pages long and includes many different projects. He said he had reviewed the CIP and was unsure if decisions were ever made on certain projects. He requested that in the future more information on the projects be provided.

Responding to the comments made by Councilmember Finter, City Manager Chris Brady clarified that the projects covered in this presentation will be appropriated in next year's budget. He advised that the City does have an extensive CIP and that the other projects will be coming back to the Council at the beginning of the calendar year. He added that the water and energy authorizations have already been reviewed and taken to the voters.

Extensive discussion ensued regarding the process of moving forward with authorized projects; projects that could be pushed out to the future; and discussions that will take place after the first of the year.

Ms. Cannistraro advised that this presentation highlights the CIP and the CIP projects for the FY 2011/12. She displayed a schedule of the projects that have funding authorization either through grants, regional reimbursements or current bond authorizations. (See Page 9 of Attachment 3)

Mr. Brady said that this schedule demonstrates how the City has been able to take the funds authorized through bonds and leverage them with regional dollars or grants in order to bring more dollars into Mesa. He stated that the numbers indicate the total value of the projects which are funded by sources other than what is collected locally.

Ms. Cannistraro advised that projects have been scheduled for FY 2011/12 and into the future. She said the final budget process involves the carryover of expenditures for projects that were not completed in FY 2010/11 and will change the total for the FY 2011/12 year. (See Page 9 of Attachment 3)

Extensive discussion ensued regarding how an expenditure is carried over when a project takes longer than one or two years to complete.

Ms. Cannistraro explained that the CIP is a planning document developed for the upcoming year. She said that all the projects in the 5-year plan have designated funding identified and that the total costs of the projects will not change.

Ms. Cannistraro reported that the Utility Revenue Bond projects included in the plan require future bond authorizations. She said that future authorization is necessary in order for the City to proceed on these particular projects. She pointed out that the first projects that will require future authorization will be in the years 2013/14. (See Page 10 of Attachment 3)

Mr. Brady advised that future bond authorizations are included in a multi-year perspective in order to estimate the capital needs for utilities over a 5 or 6 year period.

Mayor Smith commented that bond authorization will run out and in order to complete the projects additional bond authorization or another source of funding will be necessary.

Mr. Brady stated that the CIP is a planning tool used to project utility rates out to the future.

Ms. Cannistraro explained that the CIP is an all encompassing planning tool that assists in forecasting many different facets of planning, such as infrastructure needs, bond election needs, and debt service needs.

Ms. Cannistraro displayed the Preliminary Five-Year CIP funding sources that are available (See Page 11 of Attachment 3) and said that restricted funds come from grants and regional reimbursements. She pointed out that bond funds represent a majority of the CIP funding. She advised that approximately \$11.4 million in the year 2011/12 and \$10.7 million in the year 2012/13 will be received from Regional Transportation funds.

Discussion ensued regarding three regional street projects funded by the Regional Transportation money.

Mr. Brady advised that the CIP will be brought back to the Council for continued discussion at the beginning of the calendar year.

2. Acknowledge receipt of minutes of various boards and committees.

2-a. Parks and Recreation Board minutes for meeting held January 12, 2011.

2-b. Parks and Recreation Board minutes for meeting held March 9, 2011.

2-c. Transportation Advisory Board meeting held on April 19, 2011.

It was moved by Councilmember Kavanaugh, seconded by Councilwoman Higgins, that receipt of the above listed minutes be acknowledged.

Carried unanimously.

3. Hear reports on meetings and/or conferences attended.

Councilmember Kavanaugh:	Fire Department Good Samaritan Recognition
Councilmember Richins:	National League of Cities Community Development Steering Committee, Ventura, California
Mayor Smith:	iMesa Steering Committee, Phoenix-Mesa Gateway Airport Authority
Councilwoman Higgins:	Tour of Apache Helicopter Line at Boeing

4. Scheduling of meetings and general information.

City Manager Christopher Brady stated that the meeting schedule is as follows:

Thursday, June 2, 2011, 7:30 a.m. – Study Session

Monday, June 6, 2011, 5:00 p.m. – Study Session

Monday, June 6, 2011, 5:45 p.m. – Regular Council Meeting

Mr. Brady reported that at the Mid-Managers meeting, Exceptional Customer Service Awards were presented to two City employees. He said that Solid Waste Equipment Operator Dave Grimm was recognized for his graphic designs featured in the recycling coloring book. He also said that Utility Service Specialist Matt Boyer was recognized for his actions when he called the police to report a burglary that was in progress.

5. Items from citizens present.

There were no items from citizens present.

6. Convene an Executive Session.

It was moved by Councilmember Richins, seconded by Councilmember Kavanaugh, that the Council adjourn the Study Session at 8:59 a.m. and enter into Executive Session.

Carried unanimously.

6-a. Discussion or consultation with designated representatives of the City in order to consider the City's position and instruct the City's representatives regarding negotiations for the purchase, sale, or lease of real property. (A.R.S. §38-431.03A (7)) Discussion or consultation with the City Attorney in order to consider the City's position and instruct the City Attorney regarding the City's position regarding contracts that are the subject of negotiations, in pending or contemplated litigation or in settlement discussions conducted in order to avoid or resolve litigation. (A.R.S. §38-431.03A(4))

1. Pinal County Lands

8. Adjournment.

Without objection, the Executive Session adjourned at 9:35 a.m.

SCOTT SMITH, MAYOR

ATTEST:

LINDA CROCKER, CITY CLERK

I hereby certify that the foregoing minutes are a true and correct copy of the minutes of the Study Session of the City Council of Mesa, Arizona, held on the 26th day of May, 2011. I further certify that the meeting was duly called and held and that a quorum was present.

LINDA CROCKER, CITY CLERK

bdw
(attachments – 3)

Mesa Council Study Session

May 26, 2011

SHANNON L. SCUTARL, Esq.

sustainable communities working group

SGWVG

Who We Are?

The **Sustainable Communities Working Group**

(SCWVG) is a one of a kind **state, local, regional, private, and non-profit partnership** seeking to **make equitable Transit Oriented Development (TOD) a reality** in areas well served by mass transit.

sustainable communities working group

SGW/G

Some of the partners

- Arizona Departments of Housing and Transportation
- Cities of Phoenix, Tempe, and Mesa
- Metro Light Rail
- ASU Stardust Center for Affordable Homes and the Family
- Local Initiatives Support Corporation (LISC)
- Urban Land Institute
- Downtown Phoenix Partnership
- Phoenix Community Alliance
- Arizona Community Foundation
- Discovery Triangle
- St. Luke's Health Initiative



sustainable communities working group

SGMWG

H + T Affordability

- Families in Arizona spend up 60% of their incomes on the combined costs of housing and transportation
- Poster child for “drive ‘til you qualify”
- Decreasing these costs enhances real income to spend on other things
- People searching for other lifestyle options
- Need to promote location efficiency and access to affordable choices



sustainable communities working group

SGWVG

Placemaking

- Planning for different outcomes
- Economic opportunities
- Sustainable communities



sustainable communities working group

SGWG

Place Matters

- **Young educated people are being disproportionately drawn to certain cities**
 - 2000 - this mobile, high-earning, and highly-educated population was about 61% more likely to live in close-in urban neighborhoods
 - 2011 – now they are 94% more likely

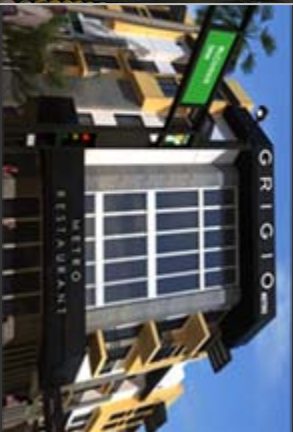
CEOs for Cities

sustainable communities working group

SGWVG

Livability

“Connecting the daily needs of the neighborhood”



sustainable communities working group

SGWVG

Sustainable Communities Fund

- Raising a \$50 million Sustainable Communities Fund
- Incent, leverage, and guide TOD along light rail line
- 3 Valley jurisdictions
- Already capitalized at \$20 million, THANK YOU to:
 - Local Initiatives Support Corporation (LISC)
 - Raza Development Fund



sustainable communities working group

SGWVG

Sustainable Communities Fund

- Affordable residential development at light rail station areas
- Essential related development, such as:
 - grocery stores for access to fresh and healthy food
 - child care facilities to support working families
 - health care facilities to increase access to health care, etc.
- Project costs associated with providing sidewalks, bike paths, shade structures and other community improvements

sustainable communities working group

SGW/G

Sustainable Communities Fund

Launch Celebration!

June 1st

9:30 am – 10:30 am

Papago Gateway Center

(First Solar Building)

305 West Washington

Tempe, AZ

Honoring the commitment and dedication of partners

sustainable communities working group

SGW/G

Sustainable Communities TOD Scorecard

Making Sustainable Communities Happen Principles

- Promote a variety of transportation options
- Mix land uses
- Provide a range of housing choices
- Foster thriving economies
- Promote compact development
- Employ environmentally responsive design
- Make places safe
- Promote healthy living
- Encourage community engagement



sustainable communities working group

SGWVG

Sustainable Communities TOD Scorecard

- Working draft in progress
- LEED ND
- ADOH Qualified Action Plan
- Local jurisdiction sustainability criteria
- Nationwide sources



sustainable communities working group

Thank you

THE CREATIVE ECONOMY FUND:

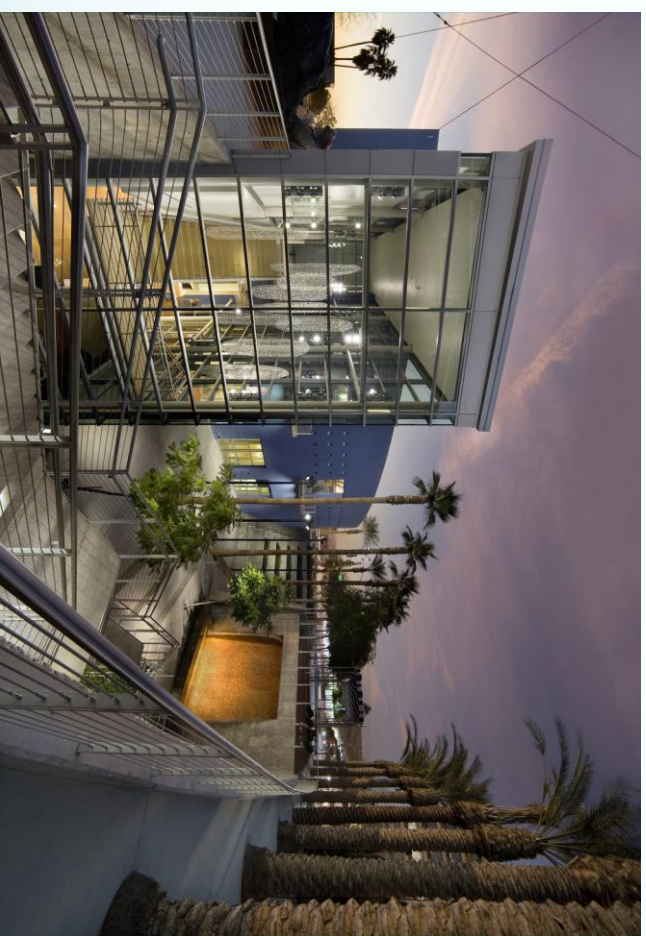
**A Support Program to Build Mesa's
Creative, Engaged Community**

Current Support to Mesa Organizations (not City-owned)

Dept. of Arts & Culture provides \$15,000 of in-kind support to the MAC Founding Resident Companies (FRC's)

\$15,000 currently allocated is divided among FRC's based on percentage of total rental use of MAC facilities

Support is provided in the form of rent reduction or marketing assistance



Additional

Need/Opportunity

Interest in providing additional support to area arts community

Cuts to State and Federal cultural grants make need greater

Sustainability of cultural organizations threatened by economy

Opportunity to attract new groups to MAC and Mesa



Goals

Enable organizations who do not currently use the MAC's theaters, lecture hall, studios or Shadow Walk to apply for reduced rental fee

Encourage cultural organizations to increase their engagement/education activities and develop new audiences

Incentivize longer-term relationship building where possible, rather than one-time use of the facility

Bring new programs and activities to the Mesa community

Generate new earned revenue as we provide a subsidized rental fee

Proposal

Creative Economy Fund to provide in-kind support, in the form of rent reduction, to both new MAC rental users and the FRC's

Competitive process administered by MAC staff with input from Museum and Cultural Advisory Board



Proposal

Fund of \$25,000 of in-kind rental credit for use of theaters, studios or public spaces at the MAC

Split between FRC's and current non-users/current rental users who are not FRC's

Split amount for distribution:
\$10,000 for the FRC's and
\$15,000 for others



Criteria

For new rental users:

Must be non-profit cultural organizations or non-profits presenting programs that incorporate arts/culture

Extra points for

Multi-use or multi-day project/presentation

Incorporating education or community engagement



Criteria

For current rental users (both FRC's and others, e.g. Salt River Brass, MLK Committee):

Must expand an existing program or add program to

Deepen the audience's educational experience;

Increase active participation or engagement of audiences;
or

Develop new audiences

Next Steps

Detailed criteria, guidelines and rating tools will be developed

Proposed timeline:

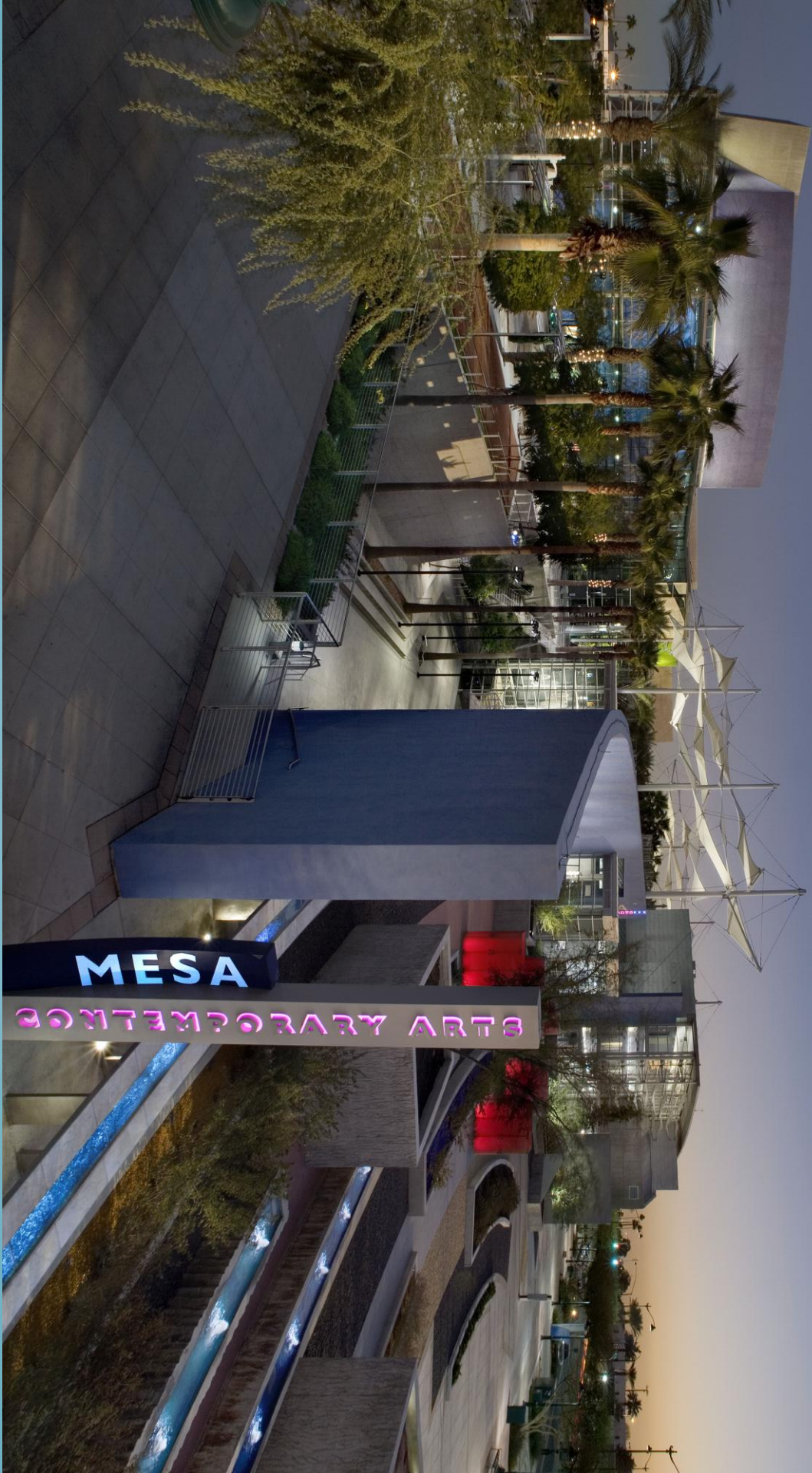
June: guidelines and materials produced

July: program announcement

August: proposal deadline

September: panel review

Sept/Oct: announcement of awards



City of Mesa

Preliminary Five-Year Capital Improvement Program Overview 2011-2016

May 26, 2011

Presented by the Engineering and Budget and Research
Departments



mesa·az

Capital Improvement Program (CIP)

- A multiple year planning tool related to both growth and replacement capital infrastructure needs.
- Council only appropriates the first year of the plan.
- The five-year CIP includes all funding sources, such as City bonds, local funding and regional funding.

Capital Improvement Program (CIP)

- The CIP provides a schedule for the capital improvement projects for bonds that have been approved by the voters.
- For Utility projects, the CIP forecasts the future bond needs.
- These schedules are used to help the City establish a sustainable financial model.

Regional Funding

Regional funding comes from a variety of sources.

- Federal Grants
- State Grants
- Light Rail Reimbursement
- Regional Transportation Program Reimbursement

Five-Year Project Highlights

PARKS & RECREATION

- Chicago Cubs Spring Training Facility
 - Including parking and infrastructure

PUBLIC SAFETY

- Fiesta District Police Substation

Five-Year Project Highlights

WATER RESOURCES

Joint Projects

- Replacing Aging Infrastructure
- Utility & Roadway Improvements at Elliot Road and Signal Butte

Water

- Improvements at Pasadena, Brooks, & Lindsay Reservoirs

Wastewater

- Southeast Water Reclamation Plant Improvements
- Lehi Crossings Lift Station & Wastewater Line

Five-Year Project Highlights

TRANSPORTATION

- Central Mesa Corridor LRT Extension
- ASU Polytechnic Street & Utility Infrastructure
- Mesa Drive and Southern Intersection
- Country Club and Southern Intersection
- Broadway Road; Power to Hawes
- Power Road; San Tan Freeway to Pecos Rd
- Utility & Roadway Improvements at Elliot Road and Signal Butte

Five-Year Project Highlights

ENERGY RESOURCES

Gas

- Gate Station 3; Power Rd 8-inch Main Extension
- Regulator Stations; 4-inch Main
- Replace Aging Infrastructure – Magma

Electric

- 4 kV to 12 kV Conversion
- Kellwood Substation
- Transmission Upgrades

Five-Year Preliminary CIP by Category

	11/12	12/13	13/14	14/15	15/16
Parks & Rec	12.1M	47.7M	23.9M	-	-
Public Safety	5.0M	7.3M	-	-	-
Transportation	65.6M	68.3M	12.7M	10.7M	9.8M
Utilities	93.0M	62.3M	40.7M	26.5M	8.4M
Total	\$175.7M	\$185.6M	\$77.3M	\$37.2M	\$18.2M

Includes only projects that have approved funding authorization.

Does not include project costs approved in 10/11 that will need to be carried over to 11/12 for completion.

Utility Revenue Bonds Future Authorization

	<u>11/12</u>	<u>12/13</u>	<u>13/14</u>	<u>14/15</u>	<u>15/16</u>
Total by Fiscal Year	-	-	11.0M	25.5M	47.0M

Projects requiring future bond authorization complete the utility plan and provide the basis for establishing future utility rates.

Preliminary Five-Year CIP Funding Sources

	11/12	12/13	13/14	14/15	15/16
Restricted Funds	17.9M	18.3M	9.3M	4.7M	4.2M
Unrestricted Funds	0.6M	0.4M	0.2M	0.2M	0.2M
Bond Funds	157.2M	166.9M	78.8M	57.8M	60.8M
Total	\$175.7M	\$185.6M	\$88.3M	\$62.7M	\$65.2M

Does not include project costs approved in 10/11 that will need to be carried over to 11/12 for completion.

