



Project Narrative

October 1, 2019

Kellie Rorex
City of Mesa – Planning Division
55 North Center Street
Mesa, AZ 85201
kellie.rorex@mesaaz.gov

RE: DENNY'S – 5503 S. POWER RD.; ZON19-00644

Proposed Project Summary

A new 3,990 SF, full-service Denny's restaurant to be located at 5503 S. Power Road, Mesa, Arizona.

Consistency and Conformity to the General Plan

The Community Character designated by the General Plan for this project location is a Mixed-Use Activity District. Additionally, this location is within the Inner Loop District of the Mesa Gateway Strategic Development Plan.

The primary goal for a project in a Mixed-Use Activity District is to “help these districts be strong and viable centers of commercial activity that attract people to unique shopping and entertainment experiences.”

The focus for a project within the Inner Loop District is to “provide high-quality, mixed-use environment that is compatible with increasing over-flight activities associated with Phoenix-Mesa Gateway Airport operations.”

It is our belief that this project is consistent with and conforms to the Community Character envisioned by the General Plan. The following are project points which address the form and guidelines spelled out in the General Plan and the Planning Department.

Mixed-Use Activity District:

- Since this District aims to “attract customers from a large radius”, this project would be supportive to those visiting customers coming into the area. A full-service restaurant allows the consumer an opportunity to sit down and take a break from their activity that is nearby.
- The location and clientele would suggest an auto dominant project. However, the building's location on the site is pedestrian friendly by providing a close accessible pedestrian connection to Power Rd.

PROJECT NARRATIVE

DENNY'S – 5503 S. POWER RD.; ZON19-00644

October 1, 2019

Page 2 of 3

- The parking fields meet the City's parking ordinance by providing parking rows with no more than 8 spaces along with landscaped parking islands. Thereby, breaking up the parking field to improve the visual appearance and reducing heat islands.

Inner Loop District:

- The building and site design meet the standards outlined for this district regarding Building Height, Lot Coverage, Use and Landscape Character.
- This project use is ideal for the increasing activities coming from the nearby airport. Airplane passengers, airport employees and associated support personnel would benefit from having a high-quality restaurant nearby.
- It will complement the District's focus to add jobs that provide "services for those residing in the area."
- Also, it certainly would not impede future growth and development of the airport but be supportive.
- The building utilizes three main finish materials: EIFS, wood grained fiber-cement siding and architectural masonry veneer. The colors and materials are consistent and conform to the development that is envisioned within this district. Yet the project is still able to convey the familiar Denny's brand to the consumer.
- The main focal point of the building is the chevron, "V" shaped massing on the North elevation. This unique geometric form contains angled scoring patterns and accent colors which articulate its innovative design.
- The main entry is articulated by high parapet walls and modern siding.
- Masonry pilasters and surrounds along with varying building heights, colors and finish materials ensure this building adds to the variety of architectural styles that this district aims to attract.

Consistent with Existing Zoning Ordinance and other City of Mesa codes and regulations

The proposed restaurant is consistent with the existing LC (Limited Commercial) zoning with an Airfield Overlay and will comply with the City of Mesa's Zoning Ordinance and all site regulations.

The Limited Commercial allows for indoor retail, entertainment and service-oriented businesses that serve the surrounding residential trade area within a one-to-ten-mile radius. Typical uses include, but are not limited to, restaurants and cafes.

The AOA 3 Overflight Area does not have any use limitations beyond those in the base district.

Compatible with Adjacent Developments and Neighboring Zoning Districts

As described this project is consistent with and conforms to the guidelines for the Community Character outlined in the General Plan. It is also compatible with any neighboring zoning districts by having a common, recognizable character and a modest building scale. Thereby, avoiding large differences in these areas.

Exterior lighting, both building and site conforms to the City of Mesa standards. Proposed parking lot light poles are non-pivoting downlights with recessed LED lights, not to exceed 25'-0" in height, and not to exceed 15'-0" in height adjacent to a residence. The exterior lighting shall have little to no impact on

PROJECT NARRATIVE

DENNY'S – 5503 S. POWER RD.; ZON19-00644

October 1, 2019

Page 3 of 3

adjacent properties. Signage, although under separate review/permit by others, is included with this submittal.

Denny's utilizes high technology filters on all cooking equipment as well as maintaining a rigorous filter cleaning regimen reducing potential cooking smoke/odor impact. There are no noise or vibration elements that would exceed the City of Mesa allowable decibel limitations.

Site and Landscape Design

The project's site has one ingress/egress driveway from Power Road.

The proposed project will demolish the existing driveway and relocate it approximately 56 feet to the North. The existing 40-foot drainage easement along the north property line left the only desirable building location to be on the South side. This made the relocation of the driveway necessary.

This project uses native desert landscaping and trees with an irrigation system using the least amount of water necessary. The trees along the street frontage and near the pedestrian connection will provide shade, scale and heat absorption.

All these site improvements will make for an attractive street frontage and more interesting for pedestrians.

The refuse enclosures are in the middle of the property, have excellent service access, are not visible from the street and conform to the latest City of Mesa detail standards.

As shown on the site plan, circulation on the site is safe and easy to navigate, designed to promote flow.

Off-street parking space size and quantity, accessible spaces and bicycle parking conform to the City of Mesa Zoning Ordinance.

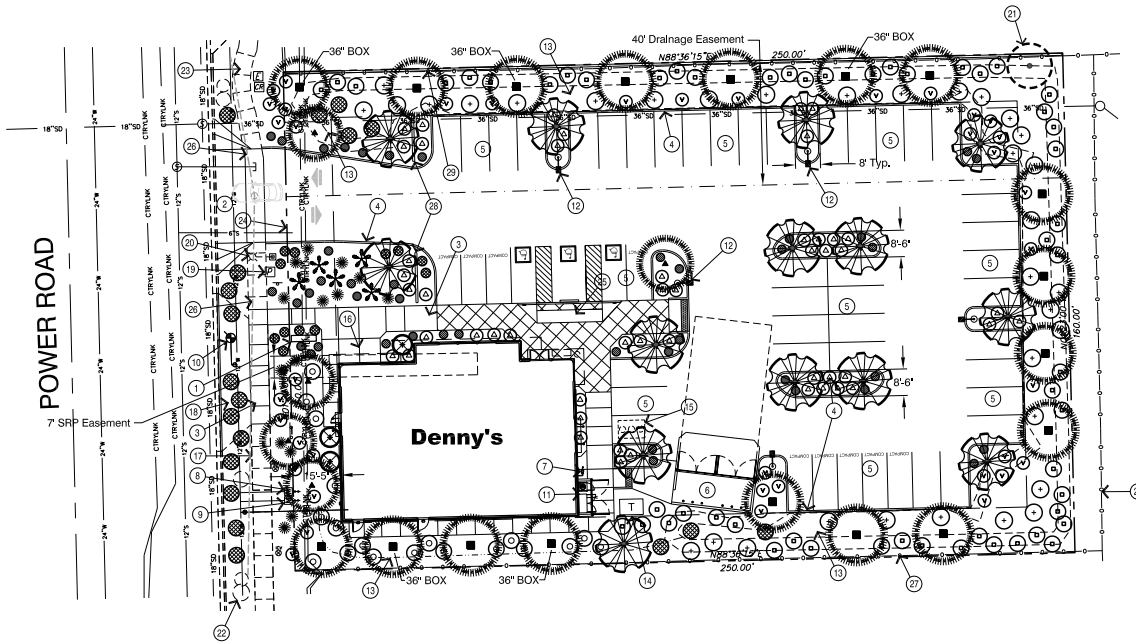
The site contains 24'-0" wide minimum, two-way drive aisles, making vehicular circulation "non-combative" with the largest of vehicles. Solid waste vehicles can maneuver throughout the site by providing turning radii of 29'-3" inside and 44'-0" outside per City of Mesa standard detail.

There are no outdoor activities or outdoor storage planned for this site. This Denny's restaurant shall operate 24-hours a day, year-round with exception on holidays to be determined later. Security will be maintained at high levels consistent with a major national brand.

Summary

We believe the proposed restaurant use, building and site design are consistent, compatible and conforms to the City of Mesa 2040 General Plan, the community character within the Mixed-Use Activity District, the Inner Loop District and all the development standards of the City of Mesa Zoning Ordinance. Thereby, the proposed Denny's restaurant will be an attractive addition to the City of Mesa.

Sincerely,
Jeff Looker, AIA
President



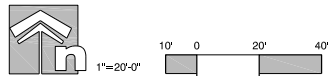
PLANT LIST			
SYMBOL	BOTANICAL NAME COMMON NAME	SIZE QUAN.	REMARKS
●	ACACIA SALICINA WILLOW ACACIA	24" BOX 36" BOX	8' Ht., 4" Sp., 1 1/2" Cal. 10' Ht., 6" Sp., 2 1/2" Cal.
●	CHILOPSIS LINEARIS DESERT WILLOW	24" BOX 5	8' Ht., 4" Sp., 1 1/2" Cal.
●	ULMUS PARVIFOLIA EVERGREEN ELM	24" BOX 14	8' Ht., 4" Sp., 1 1/2" Cal.
⊗	SOPHORA SECUNDIFLORA TEXAS MOUNTAIN LAUREL	5 GAL. 3	
⊕	LEUCOPHYLLUM LANGMANIAE 'Rio Bravo' RIO BRAVO SAGE	5 GAL. 55	
⊖	SENNA NEMOPHYLLA GREEN CASSIA	5 GAL. 34	
⊙	EREMOPHILA MACULATA 'VALENTINE' VALENTINE BUSH	5 GAL. 39	
●	LANTANA MONTEVIDENSIS 'NEW GOLD' 'NEW GOLD' LANTANA	5 GAL. 41	
●	EREMOPHILA GLABRA 'MINGENOW GOLD' OUTBACK SUNRISE	5 GAL. 12	
⊙	TECOMA STANS YELLOW BELLS	5 GAL. 19	
⊙	MYRTUS COMMUNIS 'COMPACTA' COMPACT MYRTLE	5 GAL. 49	
●	HESPERALOE PARVIFLORA RED YUCCA	5 GAL. 14	
●	ACACIA REDOLENS 'DESERT CARPET' DESERT CARPET ACACIA	5 GAL. 19	
✱	HESPERALOE FUNIFERA GIANT HESPERALOE	15 GAL. 5	

LANDSCAPE KEY NOTES

- NEW MONUMENT SIGN
- NEW ENTRY DRIVE
- NEW CONCRETE WALK
- NEW CONCRETE CURB
- NEW ASPHALT PARKING AREA
- NEW TRASH ENCLOSURE
- NEW GAS METER
- NEW DOMESTIC WATER METER
- NEW LANDSCAPE WATER METER
- NEW FIRE HYDRANT
- NEW S.E.S.
- NEW SITE LIGHT
- NEW 12" DEPTH RETENTION BASIN
- NEW ELECTRICAL TRANSFORMER
- NEW GREASE INTERCEPTOR
- NEW BIKE RACK
- EXISTING SIDEWALK SECTION TO REMAIN
- EXISTING CONCRETE ENTRY DRIVE TO BE REMOVED
- EXISTING UTILITY BOX
- EXISTING STREET LIGHT
- EXISTING TREE TO REMAIN
- EXISTING SHRUBS TO REMAIN
- EXISTING CONCRETE WALK
- RIGHT-OF-WAY LINE
- ACCESSIBLE RAMP
- SIGHT VISIBILITY LINE
- EXISTING FENCE
- NEW 3' HT. MASONRY SCREEN WALL
- NEW 6' HT. MASONRY WALL

DECOMPOSED GRANITE - 2/2" SCREENED, 2" DEPTH IN ALL AREAS OF PLANTING, 'MADISON GOLD' COLOR.

NOTE:
ALL TREES TO BE PLANTED A MINIMUM OF 5' AWAY FROM ALL UTILITY LINES.
(As measured from the outside of the pipe to the exterior of the tree trunk)



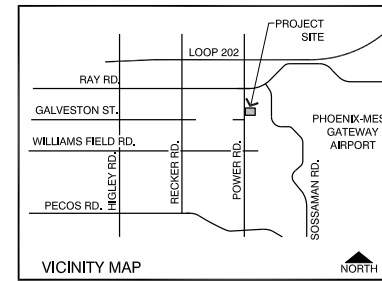
LANDSCAPE AREA CALCULATION TABLE						
LANDSCAPE AREA	REQUIRED	FRONTAGE	REQUIRED LANDSCAPE		PROVIDED LANDSCAPE	
			TREES	SHRUBS	TREES	SHRUBS
ARTERIAL STREET (Power Road)	1 TREE 6 SHRUBS PER 25 L.F. OF FRONTAGE	130 L.F.	5,2	31,2	6	33
PARKING ISLANDS	1 TREE 3 SHRUBS PER 15' PARKING ISLAND		15	45	15	50
FOUNDATION BASE	1 TREE PER 50 L.F. OF BLDG. PLANTER (250 L.F.)		5	-	6	-

NOTE: TREE HEIGHTS AND CALIPERS WILL COMPLY WITH 'ARIZONA NURSERY ASSOCIATION SPECIFICATIONS' FOR EACH PARTICULAR TYPE AND SIZE. OBTAIN SEPARATE ENGINEERING PERMIT FOR LANDSCAPING IN R.O.W FROM THE PUBLIC WORKS SERVICES DEPT. ALL LANDSCAPE MATERIAL INSTALLED SHALL BE MAINTAINED BY OWNER OR LESSEE IN ACCORDANCE WITH THE APPROVED LANDSCAPE PLANS. ALL TREES AND SHRUBS LOCATED IN THE LINE-OF-SIGHT WILL BE MAINTAINED FOR A CLEAR AREA BETWEEN 9' TO 7'. TREES SHALL BE PLANTED AT LEAST 18 FEET AWAY FROM ANY STREET LIGHT POLE OR LIGHTING CONTROL CABINET (LCC). SHRUBS SHALL BE PLANTED AT LEAST 7 FEET AWAY FROM ANY STREET LIGHT POLE OR LCC. SEE SECTION 9.2.37 IN THE CITY OF MESA ENGINEERING PROCEDURE MANUAL.

Call at least two full working days before you begin excavation.

ARIZONA 811
Arizona One Stop, Inc.

Dial 8-1-1 or 1-800-STAKE-IT (782-5348) In Maricopa County: (602) 263-1100



MLA Associates
Landscape Architects, Inc.

500 E. Mary Lane Gilbert, Arizona 85295
480-224-4278 pmla@mlandscape.com

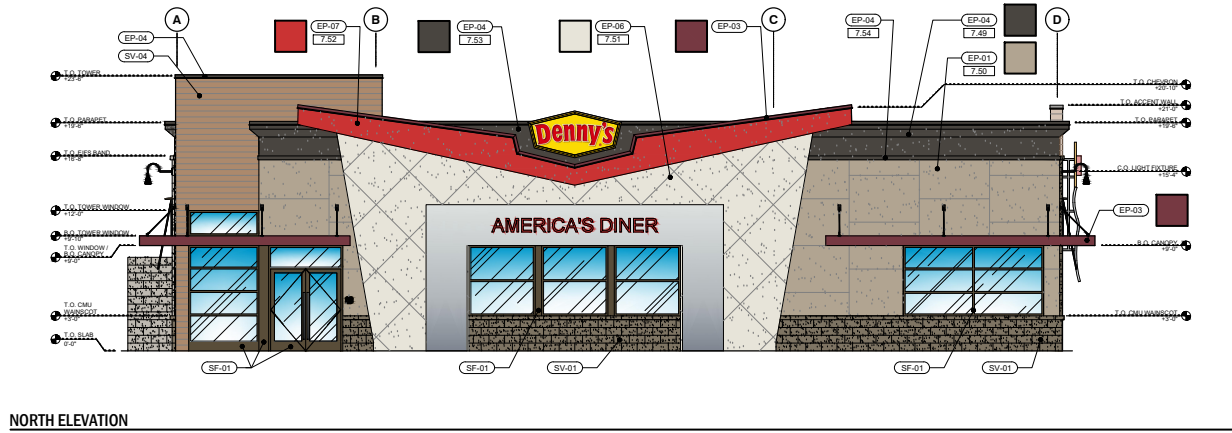
Denny's

5503 S. Power Rd.
Mesa, Arizona 85212

PROJECT 2019-20
DATE AUGUST 20, 2019
REVISION SEPTEMBER 26, 2019

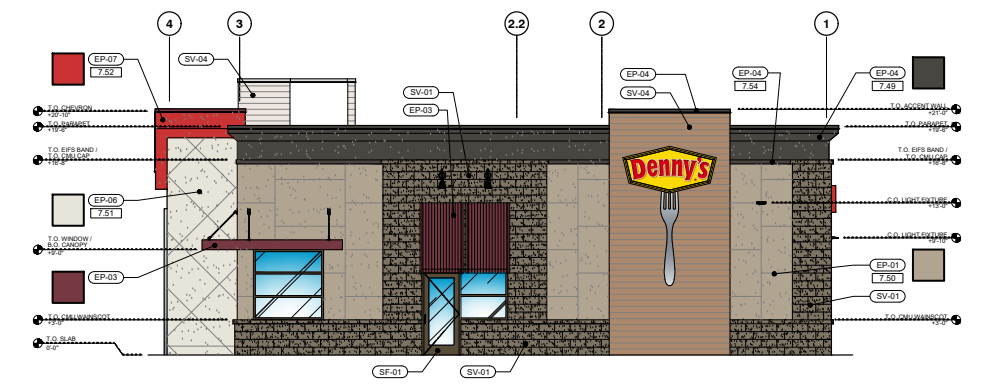
Preliminary Landscape Plan

L1 of 1

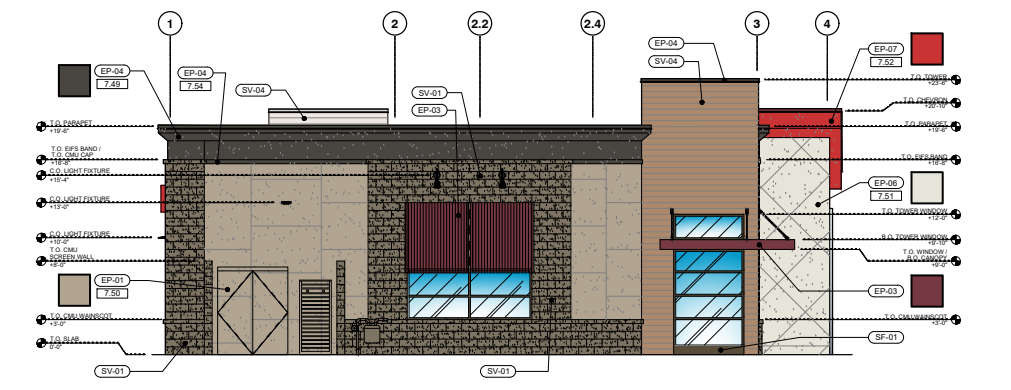


EP-01	SHERWIN WILLIAMS PAINT SW 7038 "TONY TAUPE"	SV-01	MASONRY VENEER MESASTONE PEBBLE BEACH
EP-03	SHERWIN WILLIAMS PAINT MATCH MARTHA STEWART'S MSL 020 "BARN"	SV-04	SIDING VINTAGEWOOD CEDAR FINISH
EP-04	SHERWIN WILLIAMS PAINT SW 7675 "SEALSKIN"	SF-01	STOREFRONT #40 "DARK BRONZE" ANODIZED
EP-06	SHERWIN WILLIAMS PAINT SW 7009 "PEARLY WHITE"	7.49	2" EIFS, SAND FINISH
EP-07	SHERWIN WILLIAMS PAINT PMS 485 "DENNY'S V PORTAL RED"	7.50	2" EIFS, SAND FINISH VERTICAL RUNNING BOND REVEAL PATTERN. REFER TO DETAIL 4/A4.1.
FN-01	MATCH FINISH OF WESTERN STATES METALS "SILVER ALUMINUM"	7.51	2" EIFS, SAND FINISH, DIAMOND REVEAL PATTERN. REFER TO DETAIL 5/A4.1.
		7.52	2" EIFS WITH DRYFLEX BASE COAT, SMOOTH FINISH.
		7.53	2" EIFS WITH DRYFLEX BASE COAT, SAND FINISH.
		7.54	4" EIFS BAND, SAND FINISH.

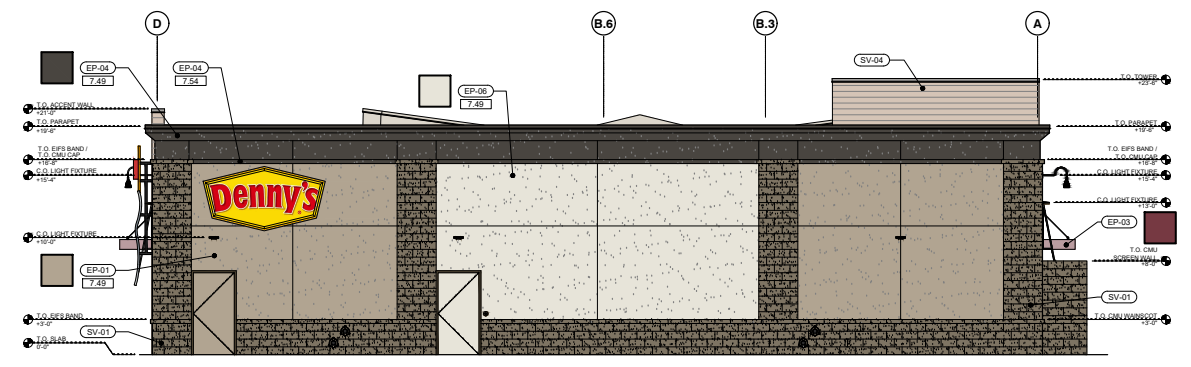
NORTH ELEVATION



WEST ELEVATION



EAST ELEVATION

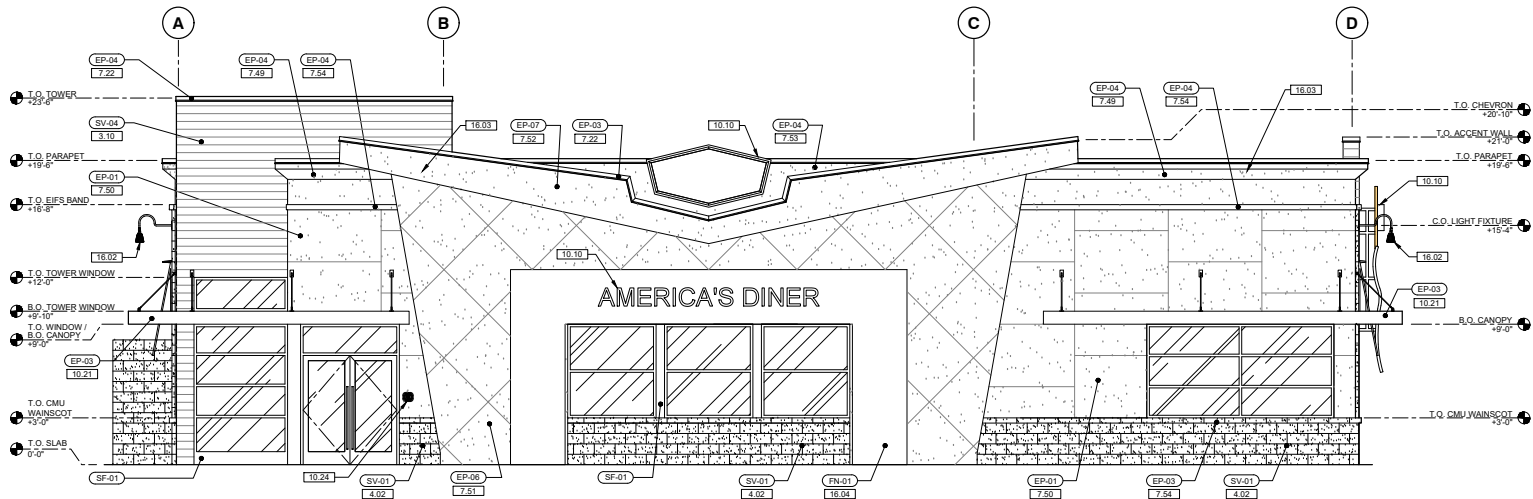


SOUTH ELEVATION

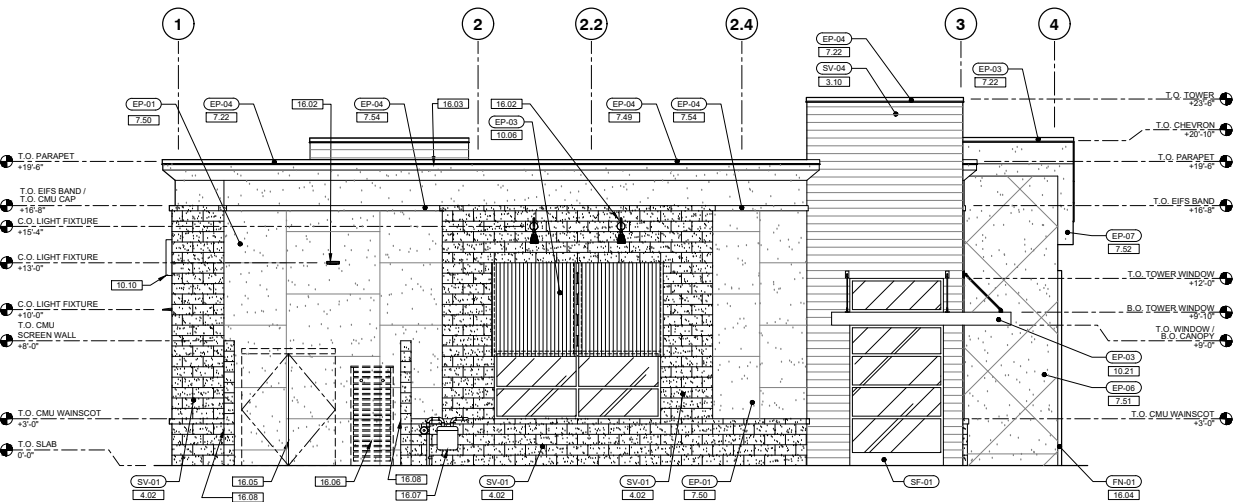
Project: Denny's
 Location: 5503 S. Power Rd.
 South of SEC of S. Power Rd. & E. Ray Rd.
 Mesa, Arizona 85212
 Number: LC-1104

COLORED EXTERIOR ELEVATIONS
 SCALE: 3/16" = 1'-0"

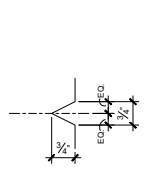
OCTOBER 1, 2019



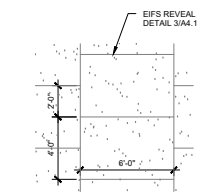
1 NORTH ELEVATION
A4.1 SCALE: 1/4" = 1'-0"



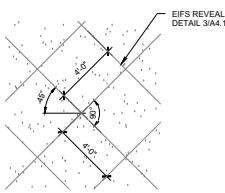
2 EAST ELEVATION
A4.1 SCALE: 1/4" = 1'-0"



3 TYPICAL EIFS REVEAL DETAIL
A4.1 SCALE: 6" = 1'-0"



4 EIFS REVEAL - VERTICAL RUNNING BOND PATTERN
A4.1 SCALE: 1/4" = 1'-0"



5 EIFS REVEAL - DIAMOND PATTERN
A4.1 SCALE: 1/4" = 1'-0"

MARK	DESCRIPTION	MANUFACTURER	COLOR
PAINT AND STAIN			
EP-01	MAIN BUILDING FIELD COLOR	SHERWIN WILLIAMS	SW 7549 "STUDIO TAUPE"
EP-03	ACCENT BAND	SHERWIN WILLIAMS	MATCH MSL 026 "BARN"
EP-04	CORNICE CAP FLASHING	SHERWIN WILLIAMS	SW 7055 "ENGLISHS BRONZE"
EP-06	V-PORTAL MAIN COLOR	SHERWIN WILLIAMS	SW 7009 "PEARLY WHITE"
EP-07	"Y" ELEMENT	SHERWIN WILLIAMS	PMS 485 DENNIS V PORTAL RED
EP-09	TRASH ENCLOSURE INTERIOR, PLYON POLE SIGNS, PARKING LOT LIGHT POLES	SHERWIN WILLIAMS	DTM GLOSS, PACKAGED S-W BLACK
MASONRY VENEER, SIDING, STOREFRONT AND FINISH			
SV-01	CONCRETE MASONRY VENEER / WAINSCOT CAP / SILL	SUPERLITE	MESASTONE, PEBBLE BEACH
SV-04	FIBER CEMENT SIDING	NICHHA	VINTAGEWOOD, CEDAR FINISH
SF-01	STOREFRONT FRAMING	KAWNEER	#40 "DARK BRONZE", ANODIZED
FN-01	CUSTOM FINISH	VENDOR	MATCH WESTERN STATES METALS "SILVER ALUMINUM", POWDER COAT METAL

GENERAL NOTES

1. PROVIDE BLOCKING BEHIND ALL ATTACHED BUILDING SIGNAGE.
2. COORDINATE EXTERIOR ELEVATIONS WITH ELECTRICAL AND MECHANICAL DRAWINGS FOR PLACEMENT OF LIGHTING, WALL HYDRANTS, MECHANICAL LOUVERS, ETC.
3. PROVIDE BLOCKING BEHIND ALL AWNINGS TO ENSURE A 300 LB PULL OUT OR BETTER.
4. ALL UTILITY BOXES (ELECTRICAL PANELS, GAS METER, ETC.) ARE TO BE PAINTED TO MATCH EIFS IF PERMISSIBLE BY THE LOCAL UTILITY COMPANY.
5. DOWNSPOUTS AND GUTTERS TO BE PREFORMED AND PREFINISHED COLOR TO MATCH BUILDING FIELD.
6. ALL METAL COMPONENTS ON EXTERIOR ARE TO BE PREFORMED AND PREFINISHED WHERE POSSIBLE.
7. ALL DOORS AND WINDOWS SHALL BE DARK BRONZE ANODIZED ALUMINUM WITH GLASS AS SELECTED BY OWNER AND ARCHITECT.
8. CAULK LINE AROUND WINDOWS AND DOOR SHALL BE 3/8" WIDE.
9. EXTERIOR WALL FINISH TO BE INSTALLED IN STRICT ACCORDANCE WITH MANUFACTURER'S SPECIFICATIONS.
10. ALL EXTERIOR LIGHT FIXTURES SHALL BE PREFINISHED. REFER TO ELECTRICAL DRAWINGS.
11. ABBREVIATION "C" DENOTES CONTROL JOINT.
12. COORDINATE ALL EXTERIOR SIGNS, CANOPIES, AWNINGS AND "AMERICA'S DINER" PANELS WITH OWNER'S VENDOR.
13. SCORE PATTERNS IN EIFS ARE TO TURN CORNERS IN CONTIGUOUS RUNS.

KEYED NOTES

- 3.10 FIBER CEMENT SIDING OVER AIR MOISTURE BARRIER. INSTALL PER MANUFACTURER SPECIFICATIONS.
- 4.02 ARCHITECTURAL MASONRY VENEER OVER AIR MOISTURE BARRIER.
- 7.22 PREFINISHED ALUMINUM COPING CAP WITH CONTINUOUS CLEAT. COLOR PER EXTERIOR FINISH SCHEDULE. SLOPE TO DRAIN TO ROOF.
- 7.49 EXTERIOR INSULATION AND FINISH SYSTEM (EIFS). DRYVIT OUTSULATION PLUS, 2" THICK. SAND FINISH. PAINT PER EXTERIOR FINISH SCHEDULE.
- 7.50 EXTERIOR INSULATION AND FINISH SYSTEM (EIFS). DRYVIT OUTSULATION PLUS, 2" THICK. SAND FINISH. PAINT PER EXTERIOR FINISH SCHEDULE. VERTICAL RUNNING BOND REVEAL PATTERN; REFER TO DETAIL 404.1.
- 7.51 EXTERIOR INSULATION AND FINISH SYSTEM (EIFS). DRYVIT OUTSULATION PLUS, 2" THICK. SAND FINISH. PAINT PER EXTERIOR FINISH SCHEDULE. DIAMOND REVEAL PATTERN; REFER TO DETAIL 504.1.
- 7.52 EXTERIOR INSULATION AND FINISH SYSTEM (EIFS). DRYVIT OUTSULATION PLUS WITH DRYFLEX BASE COAT, 2" THICK. SMOOTH FINISH. PAINT PER EXTERIOR FINISH SCHEDULE.
- 7.53 EXTERIOR INSULATION AND FINISH SYSTEM (EIFS). DRYVIT OUTSULATION PLUS WITH DRYFLEX BASE COAT, 2" THICK. SAND FINISH. PAINT PER EXTERIOR FINISH SCHEDULE.
- 7.54 EXTERIOR INSULATION AND FINISH SYSTEM (EIFS). DRYVIT OUTSULATION PLUS, 4" THICK SAND. SAND FINISH. PAINT PER EXTERIOR FINISH SCHEDULE.
- 10.06 CORRUGATED METAL AWNING AND FRAME WITH POWDER COAT FINISH. PROVIDE BLOCKING AS REQUIRED FOR INSTALLATION. CONFIRM MOUNTING REQUIREMENTS WITH OWNER'S VENDOR.
- 10.10 SIGNAGE BY OTHERS UNDER SEPARATE PERMIT. GC SHALL PROVIDE BLOCKING AND POWER AS REQUIRED. COORDINATE INSTALLATION LOCATION WITH OWNER'S VENDOR.
- 10.21 PREFABRICATED CANOPY, MAPES SUPER LUMIDECK. FLAT SOFFIT WITH 1/4" FASCIA. COLOR AS SPECIFIED IN FINISH SCHEDULE.
- 10.24 KNOX BOX. GC SHALL COORDINATE EXACT FIELD LOCATION WITH LOCAL FIRE MARSHAL AND BUILDING INSPECTOR.
- 16.02 BUILDING MOUNTED LIGHT FIXTURE. REFER TO ELECTRICAL DRAWINGS.
- 16.03 ALL ROOF TOP EQUIPMENT TO BE SCREENED BY PARAPET WALLS.
- 16.04 POWDER COAT METAL FINISH BY OWNER'S VENDOR.

Looker Cappello & Architects INC

2070 E. SOUTHERN AVE.
TEMPE, ARIZONA 85282
480-780-1774
FAX: 480-968-6571

THIS DRAWING IS AN INSTRUMENT OF SERVICE AND AS SUCH SHALL REMAIN THE PROPERTY OF LOOKER & CAPPOLLO ARCHITECTS INC. UNAUTHORIZED USE OR REPRODUCTION OF THIS DRAWING WITHOUT THE WRITTEN CONSENT OF LOOKER & CAPPOLLO ARCHITECTS INC. IS PROHIBITED. THIS DRAWING IS ONLY FOR USE IN CONNECTION WITH THIS PROJECT AND SHALL NOT BE USED FOR OTHER LOCATIONS. COPYRIGHT 2019
LOOKER & CAPPOLLO ARCHITECTS INC.

Denny's

DENNY'S

5503 S. POWER RD.
SOUTH OF SEC OF
S. POWER RD. & E. RAY RD.
MESA, AZ 85212

EXTERIOR ELEVATIONS

REVISIONS

NO.	DATE	DESCRIPTION

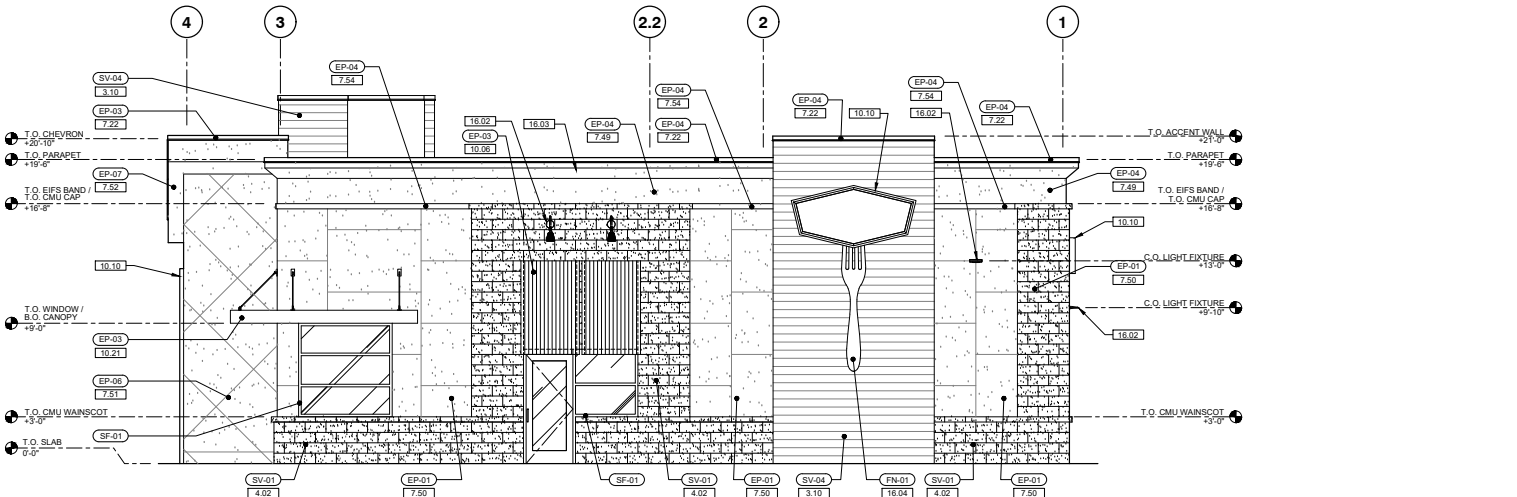
2014
JEFF A
LOOKER
Exp: 6/30/2021

ISSUE DATE

OCTOBER 1, 2019

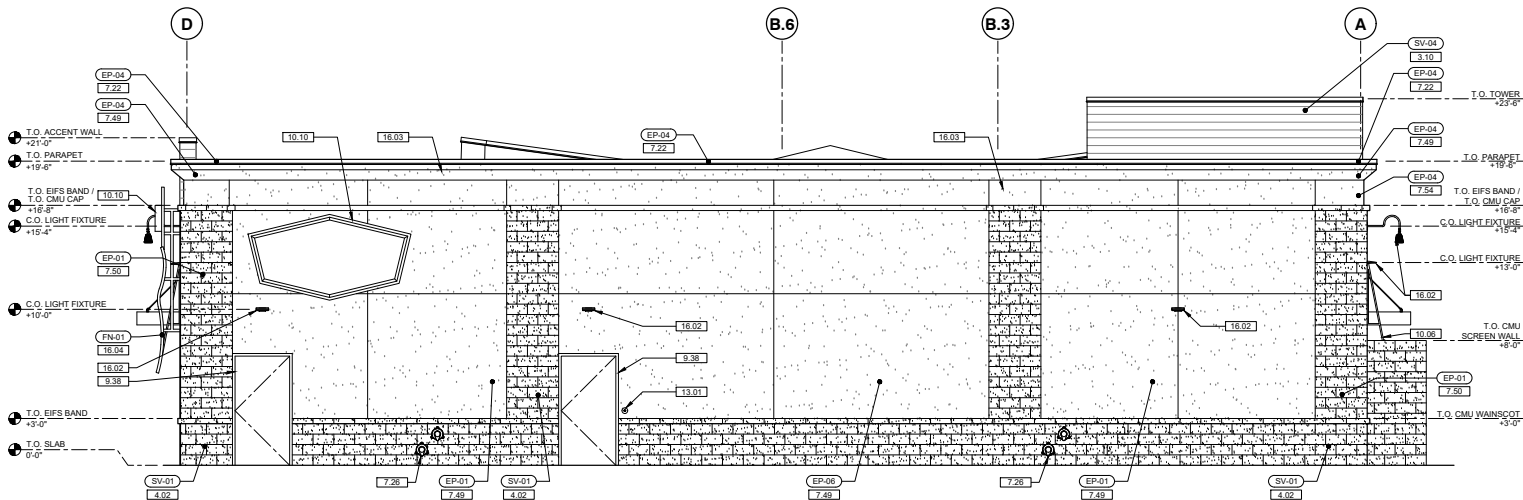
PROJECT #: LC1104

A4.1



1 WEST ELEVATION

SCALE: 1/4" = 1'-0"



2 SOUTH ELEVATION

SCALE: 1/4" = 1'-0"

EXTERIOR FINISH SCHEDULE			
MARK	DESCRIPTION	MANUFACTURER	COLOR
PAINT AND STAIN			
EP-01	MAIN BUILDING FIELD COLOR	SHERWIN WILLIAMS	SW 7549 "STUDIO TAUIPE"
EP-03	ACCENT BAND	SHERWIN WILLIAMS	MATCH MSL 026 "BARN"
EP-04	CORNICE, CAP FLASHING	SHERWIN WILLIAMS	SW 7055 "ENDURING BRONZE"
EP-06	V-PORTAL MAIN COLOR	SHERWIN WILLIAMS	SW 7059 "PEARLY WHITE"
EP-07	"Y" ELEMENT	SHERWIN WILLIAMS	PMS 485 DENNY'S V PORTAL RED
EP-09	TRASH ENCLOSURE INTERIOR, PYLON POLE SIGNS, PARKING LOT LIGHT POLES	SHERWIN WILLIAMS	DTM GLOSS, PACKAGED S-W BLACK
MASONRY VENEER, SIDING, STOREFRONT AND FINISH			
SV-01	CONCRETE MASONRY VENEER / WAINSCOT CAP / SILL	SUPERLITE	MESASTONE, PEBBLE BEACH
SV-04	FIBER CEMENT SIDING	NICHHA	VINTAGEWOOD, CEDAR FINISH
SF-01	STOREFRONT FRAMING	KAWNEER	#40 "DARK BRONZE" ANODIZED
FN-01	CUSTOM FINISH	VENDOR	MATCH WESTERN STATES METALS "SILVER ALUMINUM", POWDER COAT METAL

GENERAL NOTES

1. PROVIDE BLOCKING BEHIND ALL ATTACHED BUILDING SIGMAE.
2. COORDINATE EXTERIOR ELEVATIONS WITH ELECTRICAL AND MECHANICAL DRAWINGS FOR PLACEMENT OF LIGHTING, WALL HYDRANTS, MECHANICAL LOUVERS, ETC.
3. PROVIDE BLOCKING BEHIND ALL AWNINGS TO ENSURE A 300 LB PULL OUT OR BETTER.
4. ALL UTILITY BOXES (ELECTRICAL PANELS, GAS METER, ETC.) ARE TO BE PAINTED TO MATCH EIFS IF PERMISSIBLE BY THE LOCAL UTILITY COMPANY.
5. DOWNSPOUTS AND GUTTERS TO BE PREFORMED AND PREFINISHED COLOR TO MATCH BUILDING FIELD.
6. ALL METAL COMPONENTS ON EXTERIOR ARE TO BE PREFORMED AND PREFINISHED WHERE POSSIBLE.
7. ALL DOORS AND WINDOWS SHALL BE DARK BRONZE ANODIZED ALUMINUM WITH GLASS AS SELECTED BY OWNER AND ARCHITECT.
8. CAULK LINE AROUND WINDOWS AND DOOR SHALL BE 3/8" WIDE.
9. EXTERIOR WALL FINISH TO BE INSTALLED IN STRICT ACCORDANCE WITH MANUFACTURER'S SPECIFICATIONS.
10. ALL EXTERIOR LIGHT FIXTURES SHALL BE PREFINISHED. REFER TO ELECTRICAL DRAWINGS.
11. ABBREVIATION "C.J." DENOTES CONTROL JOINT.
12. COORDINATE ALL EXTERIOR SIGNS, CANOPIES, AWNINGS AND "AMERICA'S DINER" PANELS WITH OWNER'S VENDOR.
13. SCORE PATTERNS IN EIFS ARE TO TURN CORNERS IN CONTINUOUS RUNS.

KEYED NOTES

- 3.10 FIBER CEMENT SIDING OVER AIR MOISTURE BARRIER. INSTALL PER MANUFACTURER SPECIFICATIONS.
- 4.02 ARCHITECTURAL MASONRY VENEER OVER AIR MOISTURE BARRIER.
- 7.22 PREFINISHED ALUMINUM COPING CAP WITH CONTINUOUS CLEAT. COLOR PER EXTERIOR FINISH SCHEDULE. SLOPE TO DRAIN TO ROOF, TYPICAL.
- 7.26 ROOF DRAIN AND OVERFLOW LEADER TO DAYLIGHT A.F.G. WITH BRONZE NOZZLE AND CONCRETE SPLASHBLOCK.
- 7.49 EXTERIOR INSULATION AND FINISH SYSTEM (EIFS), DRYVIT OUTSULATION PLUS, 2" THICK, SAND FINISH. PAINT PER EXTERIOR FINISH SCHEDULE.
- 7.50 EXTERIOR INSULATION AND FINISH SYSTEM (EIFS), DRYVIT OUTSULATION PLUS, 2" THICK, SAND FINISH. PAINT PER EXTERIOR FINISH SCHEDULE. VERTICAL RUNNING BOND PATTERN; REFER TO DETAIL 494.1.
- 7.51 EXTERIOR INSULATION AND FINISH SYSTEM (EIFS), DRYVIT OUTSULATION PLUS, 2" THICK, SAND FINISH. REVEAL PATTERN; REFER TO DETAIL 514.1.
- 7.52 EXTERIOR INSULATION AND FINISH SYSTEM (EIFS), DRYVIT OUTSULATION PLUS WITH DRYFLEX BASE COAT, 2" THICK, SMOOTH FINISH. PAINT PER EXTERIOR FINISH SCHEDULE.
- 7.53 EXTERIOR INSULATION AND FINISH SYSTEM (EIFS), DRYVIT OUTSULATION PLUS WITH DRYFLEX BASE COAT, 2" THICK, SAND FINISH. PAINT PER EXTERIOR FINISH SCHEDULE.
- 7.54 EXTERIOR INSULATION AND FINISH SYSTEM (EIFS), DRYVIT OUTSULATION PLUS, 4" THICK BAND, SAND FINISH. PAINT PER EXTERIOR FINISH SCHEDULE.
- 9.38 DOOR AND FRAME TO BE PAINTED TO MATCH ADJACENT EIFS.
- 10.06 CORRUGATED METAL AWNING AND FRAME WITH POWDER COAT FINISH. PROVIDE BLOCKING AS REQUIRED FOR INSTALLATION. CONFIRM MOUNTING REQUIREMENTS WITH OWNER'S VENDOR.
- 10.10 SIGNAGE BY OTHERS UNDER SEPARATE PERMIT. GC SHALL PROVIDE BLOCKING AND POWER AS REQUIRED. COORDINATE INSTALLATION LOCATION WITH OWNER'S VENDOR.
- 10.21 PREFABRICATED CANOPY, MAPES SUPER LUMIDECK FLAT SOFFIT WITH J FASCIA, COLOR AS SPECIFIED IN FINISH SCHEDULE.
- 10.24 KNOX BOX. GC SHALL COORDINATE EXACT FIELD LOCATION WITH LOCAL FIRE MARSHAL AND BUILDING INSPECTOR.
- 13.01 DOORBELL.
- 16.02 BUILDING MOUNTED LIGHT FIXTURE, REFER TO ELECTRICAL DRAWINGS.
- 16.03 ALL ROOF TOP EQUIPMENT TO BE SCREENED BY PARAPET WALL.
- 16.04 POWDER COAT METAL FINISH BY OWNER'S VENDOR.
- 16.05 INDICATES PROPOSED LOCATION OF SERVICE ENTRY SECTION (SES).
- 16.06 INDICATES PROPOSED LOCATION OF CO2 STORAGE TANK IN LOCKABLE CAGE.
- 16.07 INDICATES PROPOSED LOCATION OF NATURAL GAS METER.
- 16.08 MASONRY CMU SCREEN WALL. METAL GATES NOT SHOWN FOR CLARITY.

Looker Cappello ARCHITECTS INC

2070 E. SOUTHERN AVE.
TEMPE, ARIZONA 85282
480-750-1774
FAX: 480-948-6571

THIS DRAWING IS AN INSTRUMENT OF SERVICE AND AS SUCH SHALL REMAIN THE PROPERTY OF LOOKER & CAPPELLO ARCHITECTS INC. UNAUTHORIZED USE OR REPRODUCTION OF THIS DRAWING WITHOUT THE WRITTEN CONSENT OF LOOKER & CAPPELLO ARCHITECTS INC. IS STRICTLY PROHIBITED. THIS DRAWING IS ONLY FOR USE IN CONNECTION WITH THIS PROJECT AND SHALL NOT BE USED FOR OTHER LOCATIONS. CORRECTED 2019

LOOKER & CAPPELLO ARCHITECTS INC.

Denny's

5503 S. POWER RD.
SOUTH OF SEC OF
S. POWER RD. & E. RAY RD.
MESA, AZ 85212

DENNY'S

5503 S. POWER RD.
SOUTH OF SEC OF
S. POWER RD. & E. RAY RD.
MESA, AZ 85212

EXTERIOR ELEVATIONS

REVISIONS

1		
2		
3		
4		
5		
6		
7		
8		
9		
10		

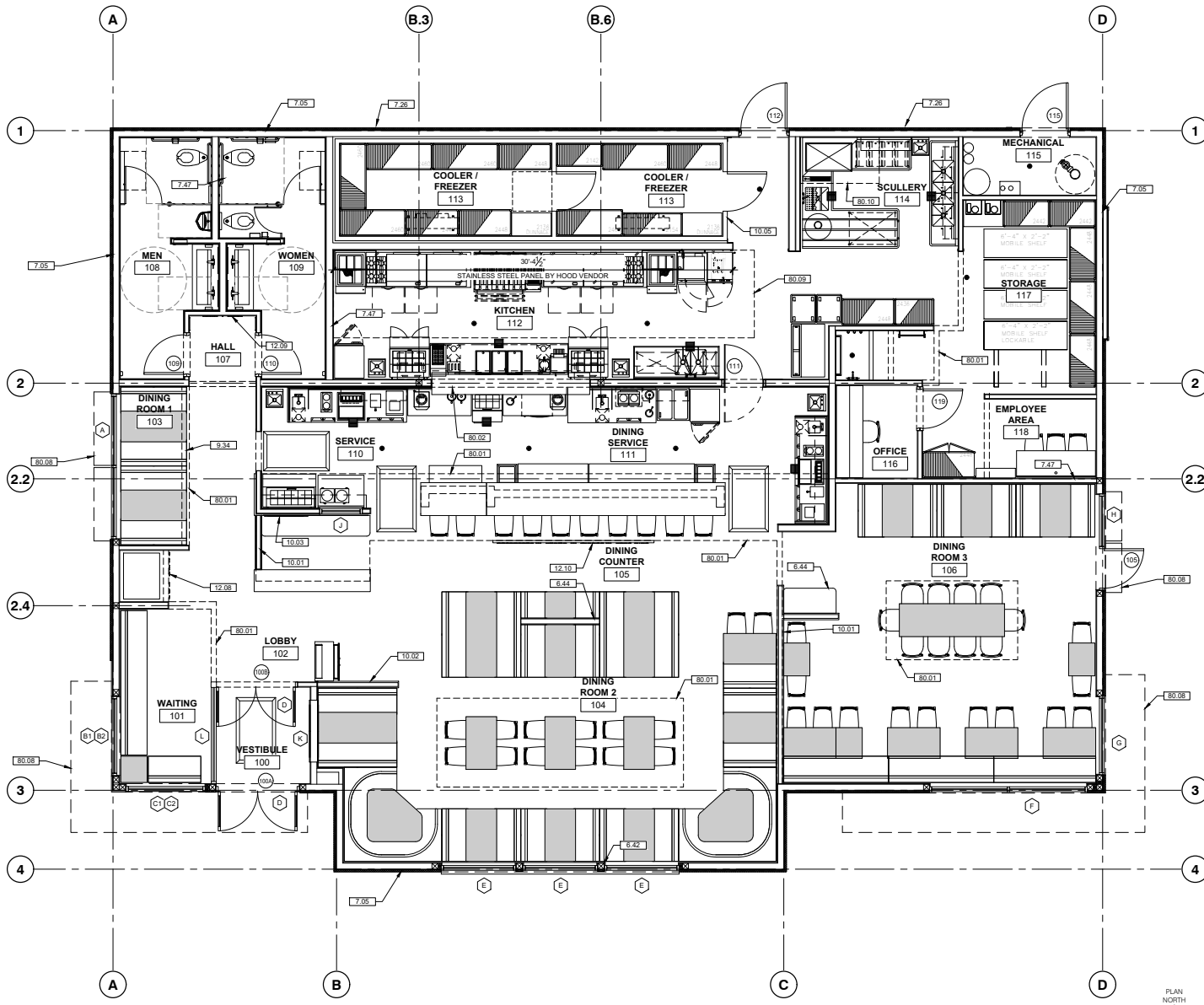
2013
JEFF A
LOOKER
Exp. 6/30/2021

ISSUE DATE

OCTOBER 1, 2019

PROJECT #: LC1104

A4.2



GENERAL NOTES

1. ROOMS ARE DEFINED BY WALLS, FACES OF DOORS, AND ROOM CHANGE INDICATORS.
2. PROVIDE WOOD BLOCKING IN PARTITIONS AT ALL LOCATIONS WHERE WORK SURFACE, SHELVING, BRACKETS, DISPLAYS, GRAB BARS, HANDRAILS AND/OR EQUIPMENT WILL BE MOUNTED OR ATTACHED TO THE FACE OF WALL FOR STRUCTURAL STABILITY. REFERENCE FLOOR PLAN FOR LOCATIONS OF SUCH EQUIPMENT. ALL CONCEALED WOOD SHALL BE FIRE-RETARDANT LUMBER.
3. LUMBER AND BLOCKING IN CONTACT WITH MASONRY OR CONCRETE SHALL BE PRESSURE TREATED.
4. USE TWO-STUD CORNERS WHERE POSSIBLE.
5. PROVIDE BATT INSULATION AT PERIMETER OF THE BUILDING. PROVIDE SOUND BATT BETWEEN DINING TO RESTROOM, IN THE WALLS BETWEEN THE TWO RESTROOMS, RESTROOM TO KITCHEN, AND DINING TO EMPLOYEE AREA/OFFICE.
6. PROVIDE FULL HEIGHT STAINLESS STEEL PANEL AT KITCHEN LINE AS INDICATED ON PLAN. ALL OTHER KITCHEN WALLS SHALL RECEIVE FRP FINISH UNLESS OTHERWISE NOTED.
7. 1-1/2"X1-1/2" STAINLESS STEEL CORNER GUARD TO 6'-0" AFF. TYPICAL THROUGHOUT KITCHEN AREA.
8. WAINSCOT PROVIDED AND INSTALLED BY MILLWORK VENDOR. G.C. IS RESPONSIBLE FOR GYPSUM BOARD ABOVE CHAIR RAIL.

KEYED NOTES

- 6.42 WOOD COLUMN. REFER TO STRUCTURAL DRAWINGS, TYP.
- 6.44 MILLWORK SUPPLIER TO PROVIDE AND INSTALL DIVIDER WALL BETWEEN BOOTHS. NO METAL SCREENS ON DIVIDER WALLS.
- 7.05 FIBERGLASS BATT INSULATION (R-19 MINIMUM), TYP. ALL EXTERIOR WALLS & WHERE SHOWN.
- 7.26 ROOF DRAIN AND OVERFLOW LEADERS DOWN EXTERIOR WALL AND TO DAYLIGHT AT 16" A.F.G. EACH WITH CAST BRONZE DOWNSPOUT NOZZLE. SEE PLUMBING DRAWINGS, SPECIFICATIONS AND DETAILS 10A1.7 AND 10A1.7.
- 7.47 SOUND BATT INSULATION.
- 9.34 RAISED SEATING PLATFORM. REFER TO FLOOR FINISH PLAN.
- 10.01 CUSTOM METAL 'WAVE' SCREEN AND WOOD CAP.
- 10.02 CUSTOM METAL 'LOGO' SCREEN AND WOOD CAP.
- 10.03 WALL MOUNTED, CUT METAL DENNY'S LOGO PANEL, REFER TO INTERIOR ELEVATIONS.
- 10.04 ROOF ACCESS LADDER AND HATCH. REFER TO DETAIL 11/A9.2
- 10.05 COOLER/FREEZER WALLS BY OTHERS. NO WALL FINISH REQUIRED IN THIS AREA. PROVIDE A MINIMUM OF 2" AIRSPACE AT PERIMETER OF COOLER/FREEZER ASSEMBLY.
- 12.08 CUT METAL SIGN 'FUN ZONE' ON SOFFIT ABOVE.
- 12.09 M/W CUT METAL SIGN.
- 12.10 'BREAKFAST/LUNCH/DINNER' SIGN MOUNTED TO FACE OF SOFFIT.
- 80.01 LINE OF SOFFIT / HEADER ABOVE, TYPICAL.
- 80.02 PASS THRU OPENING.
- 80.08 LINE OF CANOPY / AWNING ABOVE.
- 80.09 LINE OF KITCHEN EXHAUST HOOD ABOVE.
- 80.10 LINE OF EXHAUST HOOD ABOVE OVER DISHWASHING EQUIPMENT.

1 ARCHITECTURAL FLOOR PLAN
SCALE: 1/4" = 1'-0"



Looker & Cappello ARCHITECTS INC
2070 E. SOUTHERN AVE.
TEMPE, ARIZONA 85282
480-750-1774
FAX: 480-948-6571

THIS DRAWING IS AN INSTRUMENT OF SERVICE AND AS SUCH SHALL REMAIN THE PROPERTY OF LOOKER & CAPPELLO ARCHITECTS INC. UNAUTHORIZED USE OR REPRODUCTION OF THIS DRAWING WITHOUT THE WRITTEN CONSENT OF ARCHITECT IS PROHIBITED. THIS DRAWING IS ONLY FOR USE IN CONNECTION WITH THIS PROJECT AND SHALL NOT BE USED FOR OTHER LOCATIONS. SEE US FOR OTHER LOCATIONS. COPYRIGHT 2019
LOOKER & CAPPELLO ARCHITECTS INC.



Denny's

DENNY'S
5503 S. POWER RD.
South of SEC of
S. POWER RD. & E. RAY RD.
MESA, AZ 85212

ARCHITECTURAL FLOOR PLAN

◆ REVISIONS ◆

NO.	DESCRIPTION



◆ ISSUE DATE ◆

AUGUST 20, 2019
PROJECT #: LC1104

A1.1



13 & 26 Watt No Shade LED Gooseneck Luminaire designed to match the architecture of Main Street storefronts and building perimeters. LED Gooseneck No Shade with 24" Goose Arm Style 1.

Color: Black

Weight: 10.2 lbs

Project:

Type:

Prepared By:

Date:

Driver Info

Type	Constant Current
120V	0.3A
208V	0.3A
240V	0.3A
277V	0.15A
Input Watts	15.2W
Efficiency	86%

LED Info

Watts	13W
Color Temp	4000K (Neutral)
Color Accuracy	86 CRI
L70 Lifespan	100,000
Lumens	664
Efficacy	43.7 LPW

Technical Specifications

Listings

UL Listing:

Suitable for wet locations. Suitable for mounting within 1.2m (4ft) of the ground.

IESNA LM-79 & IESNA LM-80 Testing:

RAB LED luminaires and LED components have been tested by an independent laboratory in accordance with IESNA LM-79 and LM-80.

LED Characteristics

Lifespan:

100,000-hour LED lifespan based on IES LM-80 results and TM-21 calculations

LED:

Single multi-chip, 13W high-output, long-life LED

Color Consistency:

3-step MacAdam Ellipse binning to achieve consistent fixture-to-fixture color

Color Stability:

LED color temperature is warranted to shift no more than 200K in CCT over a 5-year period

Color Uniformity:

RAB's range of CCT (Correlated Color Temperature) follows the guidelines of the American National Standard for Specifications for the Chromaticity of Solid State Lighting (SSL) Products, ANSI C78.377-2017.

Construction

Fixture:

The GN1LED13NB comes with the GOOSE1B Arm

Housing:

Precision die-cast aluminum housing, lens frame and mounting plate

Gaskets:

High-temperature Silicone

Mounting:

Heavy-duty mounting arm with "O" ring seal and stainless steel screw

Cold Weather Starting:

Minimum starting temperature is -40°C (-40°F)

Maximum Ambient Temperature:

Suitable for use in 40°C (104°F)

Finish:

Formulated for high durability and long-lasting color

Green Technology:

Mercury and UV free. RoHS-compliant components.

Electrical

Surge Protection:

4kV

Driver:

Constant Current, Class 2, 100-277V, 50/60 Hz, 100-240VAC 0.3 - 0.15A, 277VAC 0.15A, THD ≤20%, PF 97.5%.

THD:

14.8% at 480V

Other

Patents:

The design of the Gooseneck is protected by patents pending in US, Canada, China and Taiwan

Technical Specifications (continued)

Other

Warranty:

RAB warrants that our LED products will be free from defects in materials and workmanship for a period of five (5) years from the date of delivery to the end user, including coverage of light output, color stability, driver performance and fixture finish. RAB's warranty is subject to all terms and conditions found at rablighting.com/warranty.

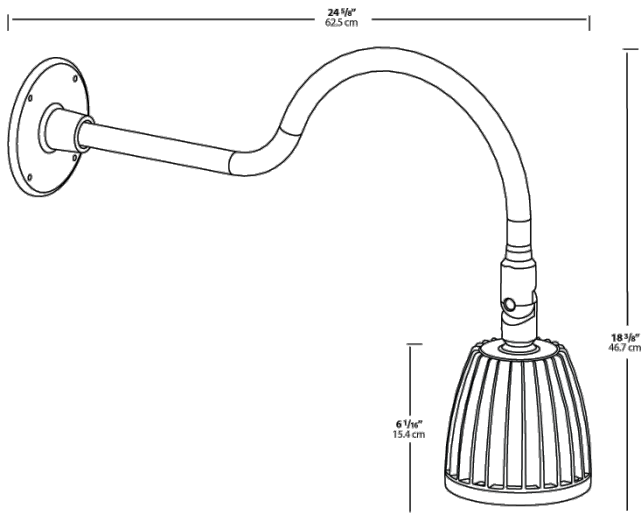
Equivalency:

Equivalent to 75W Incandescent, 50W Metal Halide or 18W CFL

Buy American Act Compliance:

RAB values USA manufacturing! Upon request, RAB may be able to manufacture this product to be compliant with the Buy American Act (BAA). Please contact customer service to request a quote for the product to be made BAA compliant.

Dimensions



Features

- Adjustable 45° swivel joint
- Superior heat sink
- Die-cast aluminum housing
- 5-Year, No-Compromise Warranty

Ordering Matrix

Family	Wattage	Color Temp	Reflector	Shade	ShadeSize	Finish
GN1LED	13	N				B
	13 = 13W 26 = 26W	Y = 3000K (Warm) N = 4000K (Neutral)	Blank = Flood R = Rectangular S = Spot	Blank = No Shade	Blank = No Shade Size	B = Black W = White A = Bronze S = Silver G = Hunter Green YL = Yellow LB = Light Blue BL = Royal Blue BWN = Brown I = Ivory R = Red

DESCRIPTION

TRACE*LITE's Nyte Forms series of LED luminaires is a versatile family of unique lighting fixtures that can be utilized to satisfy multiple application requirements, including wallpacks, floodlights, pole mounted area lights or inverted for use as a wall washer. All Nyte Forms luminaires are equipped with state of the art LED light engines that offer standard 0-10V dimming with excellent efficacies and lumen outputs. The superior thermal management maximizes the reliability and longevity that SSL systems can provide. The TLED-NFM series has an efficacy of 98 LPW with a delivered output of 4080 lumens. This allows the Nyte Forms series to be included on the DesignLights Consortium™ Qualified Products List (check QPL for specific models), meeting or exceeding the efficacy requirements for various rebate programs across the country. State of the art technology combined with application versatility and design consistency makes our new Nyte Forms family of luminaires the logical choice for any project. Unit is now available with emergency battery backup providing emergency lighting at full lumen output.

SPECIFICATIONS

Construction:

The TLED-NFM has a precision designed aluminum housing with stainless steel hardware, tempered glass lens, silicone gaskets and a UV resistant, thermoset polyester powder coated bronze finish. The TLED-NFM is completely sealed with silicone gaskets and is UL Listed for Wet Locations. The quick mount plate with built in bubble level allows for fast and easy installation. There is a knock-out in the top of the TLED-NFM housing to allow for the field installation of a photocontrol sensor. Thermal management is integral to the die-cast aluminum housing, with both the driver and the LED module each mounted directly to the housing in positions specifically designed to maximize heat dissipation and therefore increase the longevity reliability and performance of the TLED-NFM luminaire.

Optics:

The TLED-NFM series wallpack delivers exceptional light quality, with a standard correlated color temperature of 5000K with a CRI of ≥65 and optional CCTs of either 3000K or 4000K. The TLED-NFM LED light engine is fit with precision optical reflectors to distribute light forward and to the sides, producing an ideal wallpack distribution that maximizes fixture spacing while still delivering light where it is needed in the most efficient way possible. Producing 4080 delivered lumens, the TLED-NFM has an L70 of 100,000 hours.

Electrical:

The TLED-NFM includes 0-10V dimming as a standard option with LEDs powered by constant current, high efficiency Class 2 LED driver with active power factor correction (0.90 typical), a wet location rating, all around protection against over-voltage, over-temperature, short circuit conditions, and lightning. The TLED-NFM driver has a standard voltage sensing input of 120~277VAC 50/60Hz, 347VAC and 480VAC inputs are also available. It features a Class A EMI rating and complies with UL8750 safety regulations and with ANSI/IEEE C62.41 Class A Operation. The TLED-NFM is suitable for operation in -31°F to 122°F (-35°C to 50°C) ambient conditions.

Thermal Management:

The LED module and driver are mounted directly to the purpose designed housing which functions as a dedicated, LEDLITE[®]/*ogic* thermal heat sink. The heat sink is unique and has been sized to maximize the thermal dissipation of the wallpack housing. This configuration optimizes the heat removal for the LEDs and the driver, which makes possible the high efficacy, lumen output and longevity of the TLED-NFM.

Environmentally Friendly Design:

TLED-NFM luminaires consume very little energy and provide long life in comparison to traditional lamp technologies. The TLED-NFM consumes only 42 watts, but the light output can be conservatively compared to a 150W HID luminaire of similar design. The TLED-NFM provides a significant reduction in KW load and carbon emissions.

Installation:

The TLED-NFM series features a back plate design that can be easily mounted to any vertical surface, and is readily wired to a recessed J-box. An optional yoke mount, 2" slipfitter mount or 6" pole mount arm are also available for floodlighting and area lighting applications. Suitable for inverted mounting. Optional tamper-resistant hardware is available for applications where there is a high rate of vandalism, theft or in high traffic public spaces.

Emergency Battery Backup (Option: BB):

This option provides emergency powered illumination at full lumen output when the power goes out. Unit is complete with switchable AC operation for use as dusk to dawn with external photocontrol or use of a normally open switch. Following the return of normal utility power, the charging circuit will bring the battery pack to full recharge in 24 hours. A test switch is provided for testing and monitoring of unit performance. The BB option is rated for operation between -4°F and 104°F (-20°C and 40°C).

Note: 0-10V dimming is not available when BB option is selected.

Between -4°F and 14°F (-20°C and -10°C) battery backup runtime may be reduced by approximately 15%.

Model: _____ Date: _____
 Accessories: _____
 Job Name: **DENNY'S** Type: **EL-02M**

Available While Supplies Last



Specs at a Glance	
Wattage (Nominal)	41.6W
Ingress Protection	UL Listed for Wet Locations
Lumens (5000K)	4080
Efficacy (5000K)	98
CCT	3000K, 4000K, 5000K
Input Voltage	120~277 Voltage Sensing, 347VAC, 480VAC
Optics	Type II Very Short
CRI	≥70
Warranty	10 Years
Ambient Temp	-31°F to 122°F (-35°C to 50°C)

Photocontrol (Accessory: PC):

Optional field installed photocontrol provides dusk-to-dawn security. Input voltage must be specified to match the input voltage that will power the fixture.

Testing & Compliance:

The reliability and performance of the TLED-NFM is evaluated in accordance with the parameters outlined and reported by LM-79 and LM-80 documents. Photometric data is tested to IESNA LM-79-08 standard by an independent testing laboratory. Lumen maintenance, or L70, a measure of long term reliability, is determined for the light source, which consists of the LED and PSB sub-assembly as installed in the luminaire, using LM-80 in-situ thermal and reliability data as provided by the LED manufacturer in accordance with DOE/EPA standards. Certain models are DesignLights Consortium™ qualified. Consult QPL for listed models.

Listing:

The TLED-NFM is UL certified under UL1598 specifications and is UL Listed for Wet Locations in all mounting configurations.

Warranty:

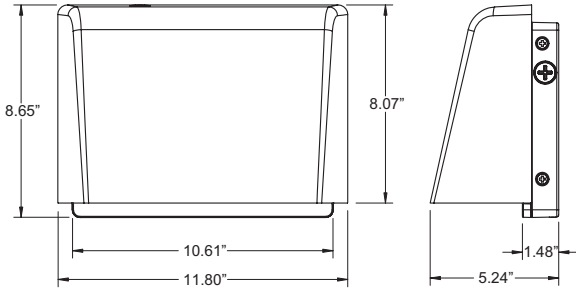
Up to 5 year warranty; see TRACE*LITE Terms and Conditions for details.

Fixture Performance

Part Number	Total System Watts	Initial Lumens	Lumens Per Watt (LPW)	L70 Hours @ 25°C	BUG Ratings
TLED-NFM-42	42W	4080	98	100,000	B2-U0-G0

NOTE: Lumen maintenance and life (part of LM-80 data) are per published information from primary LED suppliers and is based on design operation at their specified thermal management and electrical design parameters.

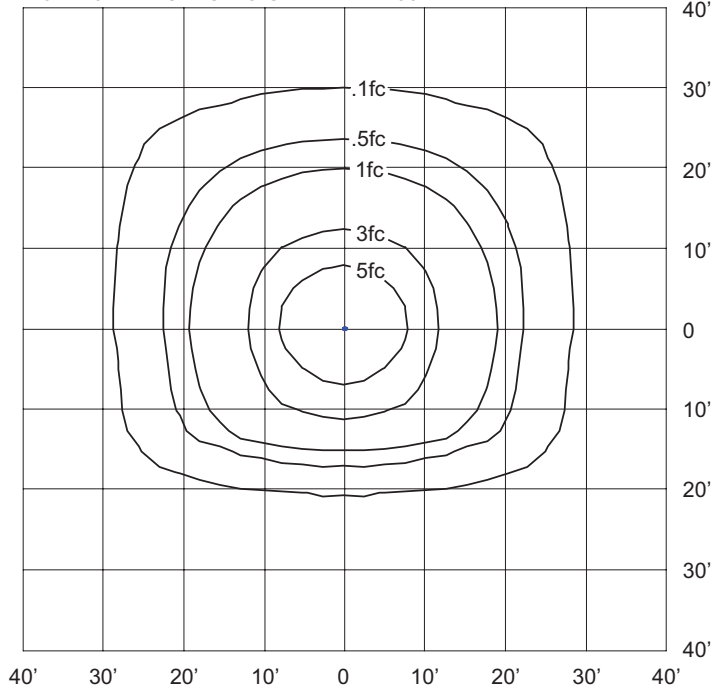
Dimensions



Approximate Weight: 10 lbs.

Sample Photometrics

TLED-NFM-42-VS-5K
 IES: TYPE II VERY SHORT FULL CUTOFF
 MOUNTING HEIGHT: **15 FEET**
 TILT: ZERO
 HORIZONTAL SPACING CRITERIA: 1.38



Ordering Information

Example: TLED-NFM-42-VS-4K

Series	Nominal Wattage	Input Voltage	CCT Temperature	Finish	Options (Factory Installed)
TLED-NFM	42 = 42 Watt	VS = 120-277VAC Voltage Sensing	3K = 3000K 4K = 4000K 5K ¹ = 5000K	BLANK = Bronze (Std.) BL = Black WH = White	BB ^{2,3} = Battery Backup

Notes	Accessories ⁵ (Field Installed)
¹ DLC qualified model	PCU ⁴ = 120-277VAC Photocontrol
² 347VAC or 480VAC not available with BB option	SFE = 2" Slipfitter Mount
³ 0-10V dimming not available with BB option	EXM6-E = 6" Pole Mount Arm
⁴ Not available on units with BB option. Remote or external photocells are compatible. Consult factory for details.	SWE = Yoke Mount
⁵ Order as separate line item	

Specifications are subject to change without notice. Installation must be performed in accordance with Barron Lighting Group installation instructions.

10810301 REV9 02/19

DESCRIPTION

TRACE*LITE's Nyte Forms series of LED luminaires is a versatile family of unique lighting fixtures that can be utilized to satisfy multiple application requirements, from wallpacks to floodlights or inverted for use as a wall washer. All Nyte Forms luminaires are equipped with state of the art LED light engines that offer standard 0-10V dimming with excellent efficacies and lumen outputs. The superior thermal management maximizes the reliability and longevity that SSL systems can provide. The TLED-NFS series has an efficacy of 92 LPW with a delivered output of 1322 lumens. State of the art technology combined with application versatility and design consistency makes our new Nyte Forms family of luminaires the logical choice for any project. Unit is now available with emergency battery backup providing emergency lighting at full lumen output.

SPECIFICATIONS

Construction:

The TLED-NFS has a precision designed aluminum housing with stainless steel hardware, tempered glass lens, silicone gaskets and a UV resistant, thermoset polyester powder coated finish. The TLED-NFS is completely sealed with silicone gaskets and is UL Listed for Wet Locations. The quick mount plate with built in bubble level allows for fast and easy installation. There is a knock-out in the top of the NFS housing to allow for the field installation of a photocontrol sensor. Thermal management is integral to the die-cast aluminum housing, with both the driver and the LED module each mounted directly to the housing in positions specifically designed to maximize heat dissipation and therefore increase the longevity reliability and performance of the TLED-NFS luminaire.

Optics:

The TLED-NFS series wallpack delivers exceptional light quality, with a standard correlated color temperature of 5000K with a CRI of ≥ 70 and optional CCT of 4000K. The TLED-NFS LED light engine is fit with precision optical reflectors to distribute light forward and to the sides, producing an ideal wallpack distribution that maximizes fixture spacing while still delivering light where it is needed in the most efficient way possible. Producing 1322 delivered lumens, the TLED-NFS has an L70 of 100,000 hours.

Electrical:

The TLED-NFS includes 0-10V dimming as a standard option with LEDs powered by constant current, high efficiency Class 2 LED driver with active power factor correction (0.98 typical), wet location rating, all around protection against over-voltage, over-temperature, short circuit conditions, and lightning. The TLED-NFS driver has a standard voltage sensing input of 120~277VAC 50/60Hz. It features a Class A EMI rating and complies with UL8750 safety regulations and with ANSI/IEEE C62.41 Class A Operation. The TLED-NFS is suitable for operation in -31°F to 122°F (-35°C to 50°C) ambient conditions.

Thermal Management:

The LED module and driver are mounted directly to the purpose designed housing which functions as a dedicated, LEDLITE^{og/c} thermal heat sink. The heat sink is unique and has been sized to maximize the thermal dissipation of the wallpack housing. This configuration optimizes the heat removal for the LEDs and the driver, which makes possible the high efficacy, lumen output and longevity of the TLED-NFS.

Environmentally Friendly Design:

TLED-NFS luminaires consume very little energy and provide long life in comparison to traditional lamp technologies. The TLED-NFS consumes only 14 watts, but the light output can be conservatively compared to a 100W HID luminaire of similar design. The TLED-NFS provides a significant reduction in KW load and carbon emissions.

Installation:

The TLED-NFS series features a back plate design that can be easily mounted to any vertical surface, and is readily wired to a recessed J-box. A 1/2" knuckle mount is included as standard for floodlighting applications. Suitable for inverted mounting. Optional tamper-resistant hardware is available for applications where there is a high rate of vandalism, theft or in high traffic public spaces.

Emergency Battery Backup (Option: BB):

This option provides emergency powered illumination at full lumen output when the power goes out. Unit is complete with switchable AC operation for use as dusk to dawn with external photocontrol or use of a normally open switch. Following the return of normal utility power, the charging circuit will bring the battery pack to full recharge in 24 hours. A test switch is provided for testing and monitoring of unit performance. The BB option is rated for operation between -4°F and 104°F (-20°C and 40°C).

Note: 0-10V dimming is not available when BB option is selected.

Between -4°F and 14°F (-20°C and -10°C) battery backup runtime may be reduced by approximately 15%.

Model: _____ Date: _____
 Accessories: _____
 Job Name: **DENNY'S** Type: **EL-02S**

Available While Supplies Last



Includes 1/2" adjustable knuckle



Specs at a Glance	
Wattage (Nominal)	14.4w
Ingress Protection	UL Listed for Wet Locations
Lumens (5000K)	1322
Efficacy (5000K)	92
CCT	4000K or 5000K
Input Voltage	120~277 Voltage Sensing
Optics	Type II Very Short
CRI	≥ 70
Warranty	5 Years
Ambient Temp	-31°F to 122°F (-35°C to 50°C)

Photocontrol (Accessory: PC):

Optional field installed photocontrol provides dusk-to-dawn security. Input voltage must be specified to match the input voltage that will power the fixture.

Testing & Compliance:

The reliability and performance of the TLED-NFS is evaluated in accordance with the parameters outlined and reported by LM-79 and LM-80 documents. Photometric data is tested to IESNA LM-79-08 standard by an independent testing laboratory. Lumen maintenance, or L70, a measure of long term reliability, is determined for the light source, which consists of the LED and PSB sub-assembly as installed in the luminaire, using LM-80 in-situ thermal and reliability data as provided by the LED manufacturer in accordance with DOE/EPA standards.

Listing:

The TLED-NFS is UL certified under UL1598 specifications and is UL Listed for Wet Locations in all mounting configurations.

Warranty:

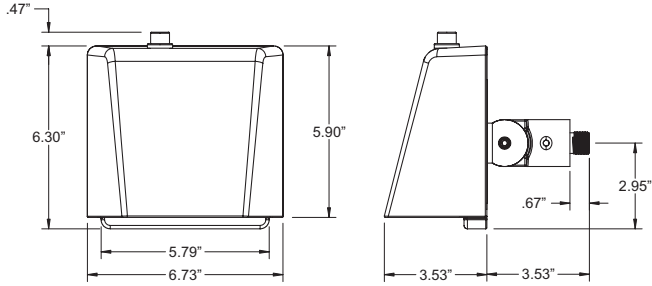
Up to 5 year warranty; see TRACE*LITE Terms and Conditions for details.

Fixture Performance

Part Number	Total System Watts	Initial Lumens	Lumens Per Watt (LPW)	L70 Hours @ 25°C	BUG Ratings
TLED-NFS-14	14W	1322	92	100,000	B1-U0-G0

NOTE: Lumen maintenance and life (part of LM-80 data) are per published information from primary LED suppliers and is based on design operation at their specified thermal management and electrical design parameters.

Dimensions



Approximate Weight: 4 lbs.

Sample Photometrics

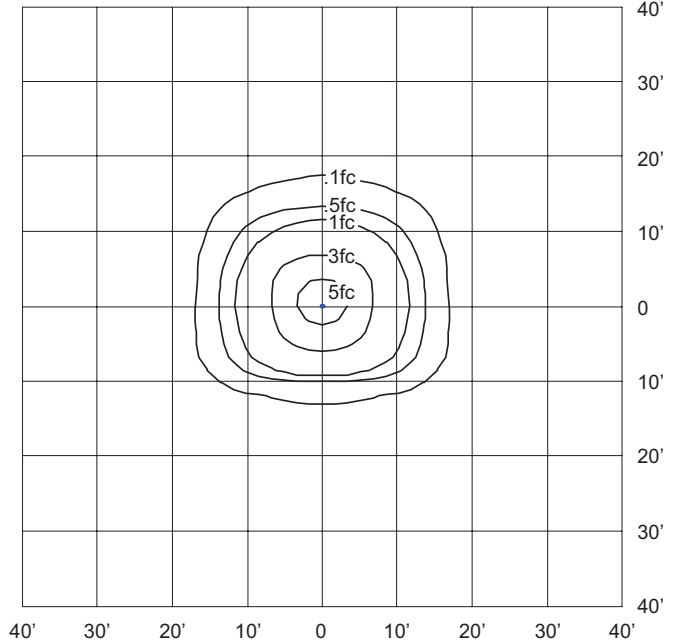
TLED-NFS-14-VS-5K

IES: TYPE II VERY SHORT FULL CUTOFF

MOUNTING HEIGHT: **10 FEET**

TILT: ZERO

HORIZONTAL SPACING CRITERIA: 1.38



Ordering Information

Example: TLED-NFS-14-VS-4K

Series	Nominal Wattage	Input Voltage	CCT Temperature	Finish	Options (Factory Installed)
TLED-NFS ¹	14 = 14 Watt	VS = 120~277VAC Voltage Sensing	4K = 4000K	BLANK = Bronze (Std.)	BB ² = Battery Backup
			5K = 5000K (Std.)	WH = White	
				BL = Black	

Notes

¹ Includes 1/2" knuckle mount standard

² 0-10V dimming not available with BB option

³ Not available on units with BB option. Remote or external photocells are compatible. Consult factory for details.

⁴ Order as separate line item

Accessories⁴ (Field Installed)

PCU³ = 120-277VAC Photocontrol

Specifications are subject to change without notice. Installation must be performed in accordance with Barron Lighting Group installation instructions.

10810300 Rev 9 05/19



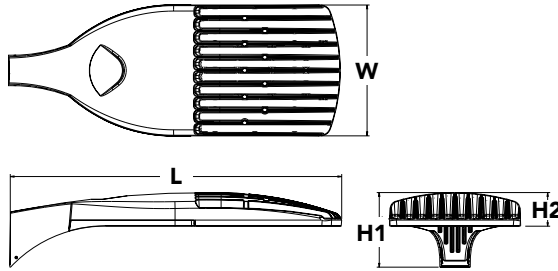
D-Series Size 1 LED Area Luminaire

d⁺series



Specifications

EPA:	1.01 ft ² (0.09 m ²)
Length:	33" (83.8 cm)
Width:	13" (33.0 cm)
Height H1:	7-1/2" (19.0 cm)
Height H2:	3-1/2"
Weight (max):	27 lbs (12.2 kg)



Catalog
Number

Notes

Type

Hit the Tab key or mouse over the page to see all interactive elements.

Introduction

The modern styling of the D-Series is striking yet unobtrusive - making a bold, progressive statement even as it blends seamlessly with its environment. The D-Series distills the benefits of the latest in LED technology into a high performance, high efficacy, long-life luminaire.

The outstanding photometric performance results in sites with excellent uniformity, greater pole spacing and lower power density. It is ideal for replacing up to 750W metal halide in pedestrian and area lighting applications with typical energy savings of 65% and expected service life of over 100,000 hours.



A+ Capable options indicated by this color background.

Ordering Information

EXAMPLE: DSX1 LED P7 40K T3M MVOLT SPA NLTAIR2 PIRHN DDBXD

DSX1 LED								
Series	LEDs	Color temperature		Distribution		Voltage	Mounting	
DSX1 LED	Forward optics	30K	3000 K	T1S	Type I short	T5VS	Type V very short	MVOLT ³ 120 ⁴ 208 ⁴ 240 ⁴ 277 ⁴ 347 ^{4,5} 480 ^{4,5} Shipped included SPA Square pole mounting RPA Round pole mounting WBA Wall bracket SPUMBA Square pole universal mounting adaptor ⁶ RPUMBA Round pole universal mounting adaptor ⁶ Shipped separately KMA8 DDBXD U Mast arm mounting bracket adaptor (specify finish) ⁷
	P1 P4 P7	40K	4000 K	T2S	Type II short	T5S	Type V short	
	P2 P5 P8	50K	5000 K	T2M	Type II medium	T5M	Type V medium	
	P3 P6 P9			T3S	Type III short	T5W	Type V wide	
	Rotated optics			T3M	Type III medium	BLC	Backlight control ²	
	P10 ¹ P12 ¹			T4M	Type IV medium	LCCO	Left corner cutoff ²	
	P11 ¹ P13 ¹			TFTM	Forward throw medium	RCCO	Right corner cutoff ²	

Control options	Other options	Finish (required)
Shipped installed NLTAIR2 nLight AIR generation 2 enabled ⁸ PIRHN Network, high/low motion/ambient sensor ⁹ PER NEMA twist-lock receptacle only (controls ordered separate) ¹⁰ PER5 Five-pin receptacle only (controls ordered separate) ^{10,11} PER7 Seven-pin receptacle only (controls ordered separate) ^{10,11} DMG 0-10v dimming wires pulled outside fixture (for use with an external control, ordered separately) ¹² DS Dual switching ^{12,13,14}	PIR High/low, motion/ambient sensor, 8-15' mounting height, ambient sensor enabled at 5fc ^{15,16} PIRH High/low, motion/ambient sensor, 15-30' mounting height, ambient sensor enabled at 5fc ^{15,16} PIR1FC3V High/low, motion/ambient sensor, 8-15' mounting height, ambient sensor enabled at 1fc ^{15,16} PIRH1FC3V Bi-level, motion/ambient sensor, 15-30' mounting height, ambient sensor enabled at 1fc ^{15,16} FAO Field adjustable output ¹⁴	Shipped installed HS House-side shield ¹⁷ SF Single fuse (120, 277, 347V) ⁴ DF Double fuse (208, 240, 480V) ⁴ L90 Left rotated optics ¹ R90 Right rotated optics ¹ Shipped separately BS Bird spikes ¹⁸ EGS External glare shield ¹⁸ DDBXD Dark bronze DBLXD Black DNAXD Natural aluminum DWHXD White DDBTXD Textured dark bronze DBLTXD Textured black DNATXD Textured natural aluminum DWHGXD Textured white



Ordering Information

Accessories

Ordered and shipped separately.

DLL127F 1.5 JU	Photocell - SSL twist-lock (120-277V) ¹⁹
DLL347F 1.5 CUL JU	Photocell - SSL twist-lock (347V) ¹⁹
DLL480F 1.5 CUL JU	Photocell - SSL twist-lock (480V) ¹⁹
DSHORT SBK U	Shorting cap ¹⁹
DSX1HS 30C U	House-side shield for P1, P2, P3, P4 and P5 ¹⁷
DSX1HS 40C U	House-side shield for P6 and P7 ¹⁷
DSX1HS 60C U	House-side shield for P8, P9, P10, P11 and P12 ¹⁷
PUMBA DDBXD U*	Square and round pole universal mounting bracket (specify finish) ¹⁸
KMA8 DDBXD U	Mast arm mounting bracket adaptor (specify finish) ⁵

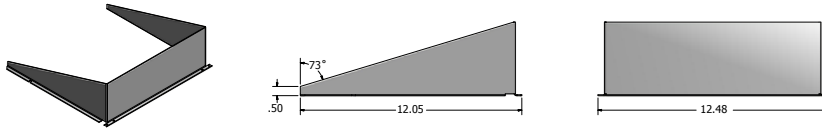
For more control options, visit [DTL](#) and [ROAM](#) online.

NOTES

- P10, P11, P12 or P13 and rotated optics (L90, R90) only available together.
- Not available with HS.
- MVOLT driver operates on any line voltage from 120-277V (50/60 Hz).
- Single fuse (SF) requires 120V, 277V or 347V. Double fuse (DF) requires 208V, 240V or 480V.
- Not available in P1 or P10.
- Universal mounting brackets intended for retrofit on existing, pre-drilled poles only. 1.5 G vibration load rating per ANCI C136.31.
- Must order fixture with SPA option. Must be ordered as a separate accessory; see Accessories information. For use with 2-3/8" mast arm (not included).
- Must be ordered with PIRHIN. Sensor cover available only in dark bronze, black, white and natural aluminum colors.
- Must be ordered with NLTAIR2. For more information on nLight Air 2 visit [this link](#).
- Photocell ordered and shipped as a separate line item from Acuity Brands Controls. See accessories. Not available with DS option. Shorting cap included.
- If ROAM[®] node required, it must be ordered and shipped as a separate line item from Acuity Brands Controls. Node with integral dimming.
- Provides 50/50 fixture operation via (2) independent drivers. Not available with PER, PER5, PER7, PIR or PIRH. Not available P1, P2, P3, P4 or P5.
- Requires (2) separately switched circuits with isolated neutral. See Outdoor Control Technical Guide for details.
- Reference Motion Sensor table on page 4.
- Reference controls options table on page 4 to see functionality.
- Not available with other dimming controls options
- Not available with BLC, LCCO and RCCO distribution. Also available as a separate accessory; see Accessories information.
- Must be ordered with fixture for factory pre-drilling.
- Requires luminaire to be specified with PER, PER5 or PER7 option. See PER Table on page 3.
- For retrofit use only.

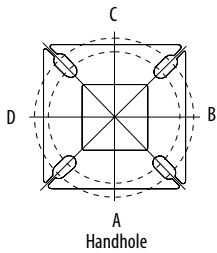
Options

EGS - External Glare Shield



Drilling

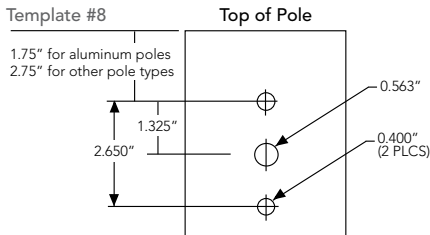
HANDHOLE ORIENTATION



Tenon Mounting Slipfitter **

Tenon O.D.	Mounting	Single Unit	2 @ 180	2 @ 90	3 @ 120	3 @ 90	4 @ 90
2-3/8"	SPA/RPA	AS3-5 190	AS3-5 280	AS3-5 290	AS3-5 320	AS3-5 390	AS3-5 490
	SPUMBA	AS3-5 190	AS3-5 280	AS4-5 290	AS3-5 320	AS4-5 390	AS4-5 490
	RUPUMBA	AS3-5 190	AS3-5 280		AS3-5 320		
2-7/8"	SPA/RPA	AST25-190	AST25-280	AST25-290	AST25-320	AST25-390	AST25-490
	SPUMBA	AST25-190	AST25-280		AST25-320		
	RUPUMBA	AST25-190	AST25-280		AST25-320		
4"	SPA/RPA	AST35-190	AST35-280	AST35-290	AST35-320	AST35-390	AST35-490
	SPUMBA	AST35-190	AST35-280	AST35-290	AST35-320	AST35-390	AST35-490
	RUPUMBA	AST35-190	AST35-280		AST35-320		

Template #8



Mounting Option	Drilling Template	Single	2 @ 180	2 @ 90	3 @ 90	3 @ 120	4 @ 90
Head Location		Side B	Side B & D	Side B & C	Side B, C & D	Round Pole Only	Side A, B, C & D
Drill Nomenclature	#8	DM19AS	DM28AS	DM29AS	DM39AS	DM32AS	DM49AS

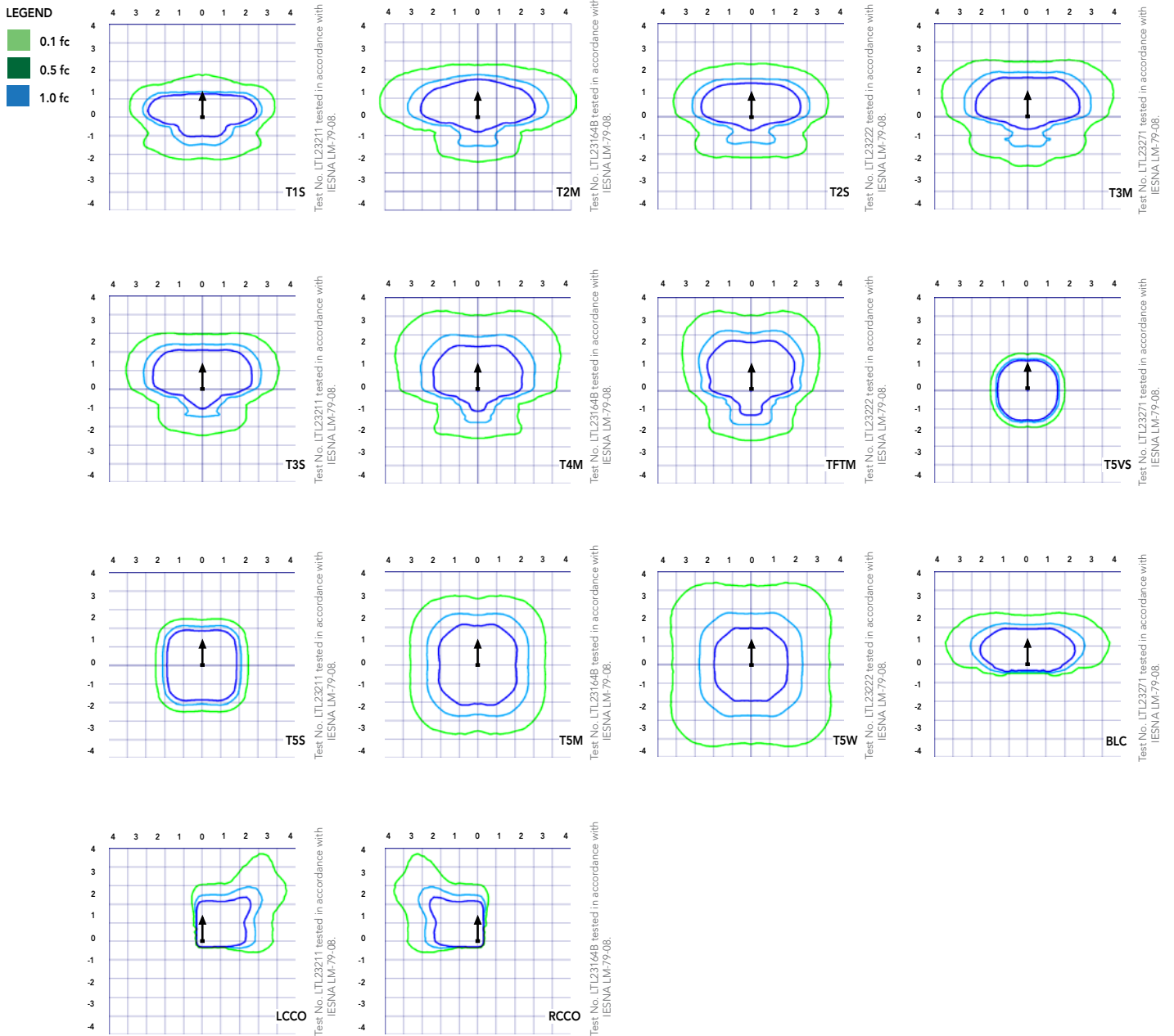
	Drilling Template	Minimum Acceptable Outside Pole Dimension					
SPA	#8	2-7/8"	2-7/8"	3.5"	3.5"	3"	3.5"
RPA	#8	2-7/8"	2-7/8"	3.5"	3.5"	3"	3.5"
SPUMBA	#5	2-7/8"	3"	4"	4"	3.5"	4"
RPUMBA	#5	2-7/8"	3.5"	5"	5"	3.5"	5"



Photometric Diagrams

To see complete photometric reports or download .ies files for this product, visit Lithonia Lighting's [D-Series Area Size 1 homepage](#).

Isofootcandle plots for the DSX1 LED 60C 1000 40K. Distances are in units of mounting height (25').



Performance Data

Lumen Ambient Temperature (LAT) Multipliers

Use these factors to determine relative lumen output for average ambient temperatures from 0-40°C (32-104°F).

Ambient		Lumen Multiplier
0°C	32°F	1.04
5°C	41°F	1.04
10°C	50°F	1.03
15°C	59°F	1.02
20°C	68°F	1.01
25°C	77°F	1.00
30°C	86°F	0.99
35°C	95°F	0.98
40°C	104°F	0.97

Projected LED Lumen Maintenance

Data references the extrapolated performance projections for the platforms noted in a **25°C ambient**, based on 10,000 hours of LED testing (tested per IESNA LM-80-08 and projected per IESNA TM-21-11).

To calculate LLF, use the lumen maintenance factor that corresponds to the desired number of operating hours below. For other lumen maintenance values, contact factory.

Operating Hours	Lumen Maintenance Factor
0	1.00
25,000	0.96
50,000	0.92
100,000	0.85

Motion Sensor Default Settings

Option	Dimmed State	High Level (when triggered)	Photocell Operation	Dwell Time	Ramp-up Time	Ramp-down Time
PIR or PIRH	3V (37%) Output	10V (100%) Output	Enabled @ 5FC	5 min	3 sec	5 min
*PIRH1FC3V or PIRH1FC3V	3V (37%) Output	10V (100%) Output	Enabled @ 1FC	5 min	3 sec	5 min

*for use when motion sensor is used as dusk to dawn control.

Electrical Load

	Performance Package	LED Count	Drive Current	Wattage	Current (A)					
					120	208	240	277	347	480
Forward Optics (Non-Rotated)	P1	30	530	54	0.45	0.26	0.23	0.19	0.10	0.12
	P2	30	700	70	0.59	0.34	0.30	0.25	0.20	0.16
	P3	30	1050	102	0.86	0.50	0.44	0.38	0.30	0.22
	P4	30	1250	125	1.06	0.60	0.52	0.46	0.37	0.27
	P5	30	1400	138	1.16	0.67	0.58	0.51	0.40	0.29
	P6	40	1250	163	1.36	0.78	0.68	0.59	0.47	0.34
	P7	40	1400	183	1.53	0.88	0.76	0.66	0.53	0.38
	P8	60	1050	207	1.74	0.98	0.87	0.76	0.64	0.49
	P9	60	1250	241	2.01	1.16	1.01	0.89	0.70	0.51
Rotated Optics (Requires L90 or R90)	P10	60	530	106	0.90	0.52	0.47	0.43	0.33	0.27
	P11	60	700	137	1.15	0.67	0.60	0.53	0.42	0.32
	P12	60	1050	207	1.74	0.99	0.87	0.76	0.60	0.46
	P13	60	1250	231	1.93	1.12	0.97	0.86	0.67	0.49

Controls Options

Nomenclature	Description	Functionality	Primary control device	Notes
FAO	Field adjustable output device installed inside the luminaire; wired to the driver dimming leads.	Allows the luminaire to be manually dimmed, effectively trimming the light output.	FAO device	Cannot be used with other controls options that need the 0-10V leads
DS	Drivers wired independently for 50/50 luminaire operation	The luminaire is wired to two separate circuits, allowing for 50/50 operation.	Independently wired drivers	Requires two separately switched circuits. Consider nLight AIR as a more cost effective alternative.
PER5 or PER7	Twist-lock photocell receptacle	Compatible with standard twist-lock photocells for dusk to dawn operation, or advanced control nodes that provide 0-10V dimming signals.	Twist-lock photocells such as DLL Elite or advanced control nodes such as ROAM.	Pins 4 & 5 to dimming leads on driver, Pins 6 & 7 are capped inside luminaire
PIR or PIRH	Motion sensors with integral photocell. PIR for 8-15' mounting; PIRH for 15-30' mounting	Luminaires dim when no occupancy is detected.	Acuity Controls SBOR	Also available with PIRH1FC3V when the sensor photocell is used for dusk-to-dawn operation.
NLTAIR2 PIRHN	nLight AIR enabled luminaire for motion sensing, photocell and wireless communication.	Motion and ambient light sensing with group response. Scheduled dimming with motion sensor over-ride when wirelessly connected to the nLight Eclipse.	nLight Air rSDGR	nLight AIR sensors can be programmed and commissioned from the ground using the CLAIRity Pro app.

A+ Capable Luminaire

This item is an A+ capable luminaire, which has been designed and tested to provide consistent color appearance and system-level interoperability.

- All configurations of this luminaire meet the Acuity Brands' specification for chromatic consistency
- This luminaire is A+ Certified when ordered with DTL® controls marked by a shaded background. DTL DLL equipped luminaires meet the A+ specification for luminaire to photocontrol interoperability¹
- This luminaire is part of an A+ Certified solution for ROAM® or XPoint™ Wireless control networks, providing out-of-the-box control compatibility with simple commissioning, when ordered with drivers and control options marked by a shaded background¹

To learn more about A+, visit www.acuitybrands.com/aplus.

1. See ordering tree for details.
2. A+ Certified Solutions for ROAM require the order of one ROAM node per luminaire. Sold Separately: [Link to Roam](#); [Link to DTL DLL](#)

FEATURES & SPECIFICATIONS

INTENDED USE

The sleek design of the D-Series Size 1 reflects the embedded high performance LED technology. It is ideal for many commercial and municipal applications, such as parking lots, plazas, campuses, and streetscapes.

CONSTRUCTION

Single-piece die-cast aluminum housing has integral heat sink fins to optimize thermal management through conductive and convective cooling. Modular design allows for ease of maintenance and future light engine upgrades. The LED drivers are mounted in direct contact with the casting to promote low operating temperature and long life. Housing is completely sealed against moisture and environmental contaminants (IP65). Low EPA (1.01 ft²) for optimized pole wind loading.

FINISH

Exterior parts are protected by a zinc-infused Super Durable TGIC thermoset powder coat finish that provides superior resistance to corrosion and weathering. A tightly controlled multi-stage process ensures a minimum 3 mils thickness for a finish that can withstand extreme climate changes without cracking or peeling. Available in both textured and non-textured finishes.

OPTICS

Precision-molded proprietary acrylic lenses are engineered for superior area lighting distribution, uniformity, and pole spacing. Light engines are available in standard 3000 K, 4000 K and 5000 K (70 CRI) configurations. The D-Series Size 1 has zero uplight and qualifies as a Nighttime Friendly™ product, meaning it is consistent with the LEED® and Green Globes™ criteria for eliminating wasteful uplight.

ELECTRICAL

Light engine configurations consist of high-efficacy LEDs mounted to metal-core circuit boards to maximize heat dissipation and promote long life (up to L85/100,000 hours at 25°C). Class 1 electronic drivers are designed to have a power factor >90%, THD <20%, and an expected life of 100,000 hours with <1% failure rate. Easily serviceable 10kV surge protection device meets a minimum Category C Low operation (per ANSI/IEEE C62.41.2).

STANDARD CONTROLS

The DSX1 LED area luminaire has a number of control options. Dusk to dawn controls can be utilized via optional NEMA twist-lock photocell receptacles. Integrated motion sensors with on-board photocells feature field-adjustable programming and are suitable for mounting heights up to 30 feet.

nLIGHT AIR CONTROLS

The DSX1 LED area luminaire is also available with nLight® AIR for the ultimate in wireless control. This powerful controls platform provides out-of-the-box basic motion sensing and photocontrol functionality and is suitable for mounting heights up to 40 feet. Once commissioned using a smartphone and the easy-to-use CLAIRITY app, nLight AIR equipped luminaires can be grouped, resulting in motion sensor and photocell group response without the need for additional equipment. Scheduled dimming with motion sensor over-ride can be achieved when used with the nLight Eclipse. Additional information about nLight Air can be found here.

INSTALLATION

Included mounting block and integral arm facilitate quick and easy installation. Stainless steel bolts fasten the mounting block securely to poles and walls, enabling the D-Series Size 1 to withstand up to a 3.0 G vibration load rating per ANSI C136.31. The D-Series Size 1 utilizes the AERIS™ series pole drilling pattern (template #8). NEMA photocontrol receptacle are also available.

LISTINGS

UL Listed for wet locations. Light engines are IP66 rated; luminaire is IP65 rated. Rated for -40°C minimum ambient. U.S. Patent No. D672,492 S. International patent pending.

DesignLights Consortium® (DLC) Premium qualified product and DLC qualified product.

Not all versions of this product may be DLC Premium qualified or DLC qualified. Please check the DLC Qualified Products List at www.designlights.org/QPL to confirm which versions are qualified.

International Dark-Sky Association (IDA) Fixture Seal of Approval (FSA) is available for all products on this page utilizing 3000K color temperature only.

WARRANTY

5-year limited warranty. Complete warranty terms located at: www.acuitybrands.com/CustomerResources/Terms_and_conditions.aspx

Note: Actual performance may differ as a result of end-user environment and application.

All values are design or typical values, measured under laboratory conditions at 25 °C.

Specifications subject to change without notice.





at 5503 S. POWER RD.
MESA, AZ 85212

COLOR & MATERIAL PALETTE



Sherwin Williams Paint
"TONY TAUPE"
SW 7038

MARK: EP-01; MAIN FIELD COLOR



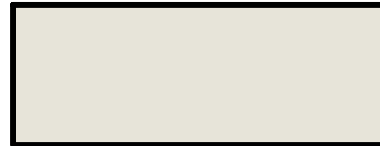
Sherwin Williams Paint
"SEALSKIN"
SW 7675

MARK: EP-04; CORNICE, CAP FLASHING



Sherwin Williams Paint
"WELL-BRED BROWN"
SW 7027

MARK: EP-02; TRIM



Sherwin Williams Paint
"PEARLY WHITE"
SW 7009

MARK: EP-06; V PORTAL MAIN COLOR



Sherwin Williams Paint to match
Martha Stewart
"BARN"
MSL 026

MARK: EP-03; ACCENT BAND



Sherwin Williams Paint
**"DENNYS V
PORTAL RED"**
PMS 485

MARK: EP-07; "V" ELEMENT



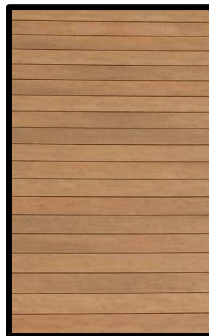
Superlite Textured Masonry Units
"PEBBLE BEACH"
MESASTONE®

MARK: SV-01, WAINSCOT



Kawneer, Storefront Framing
"DARK BRONZE"
#40, ANODIZED

MARK: SF-01; STOREFRONT FRAMES



MARK: SV-04; WALL SIDING

Nichiha Fiber Cement Siding
"CEDAR"
VINTAGEWOOD



2070 E. SOUTHERN AVE.
TEMPE, ARIZONA 85282
480-730-1776
FAX: 480-968-6571





S Power Road
Mesa, AZ 85212

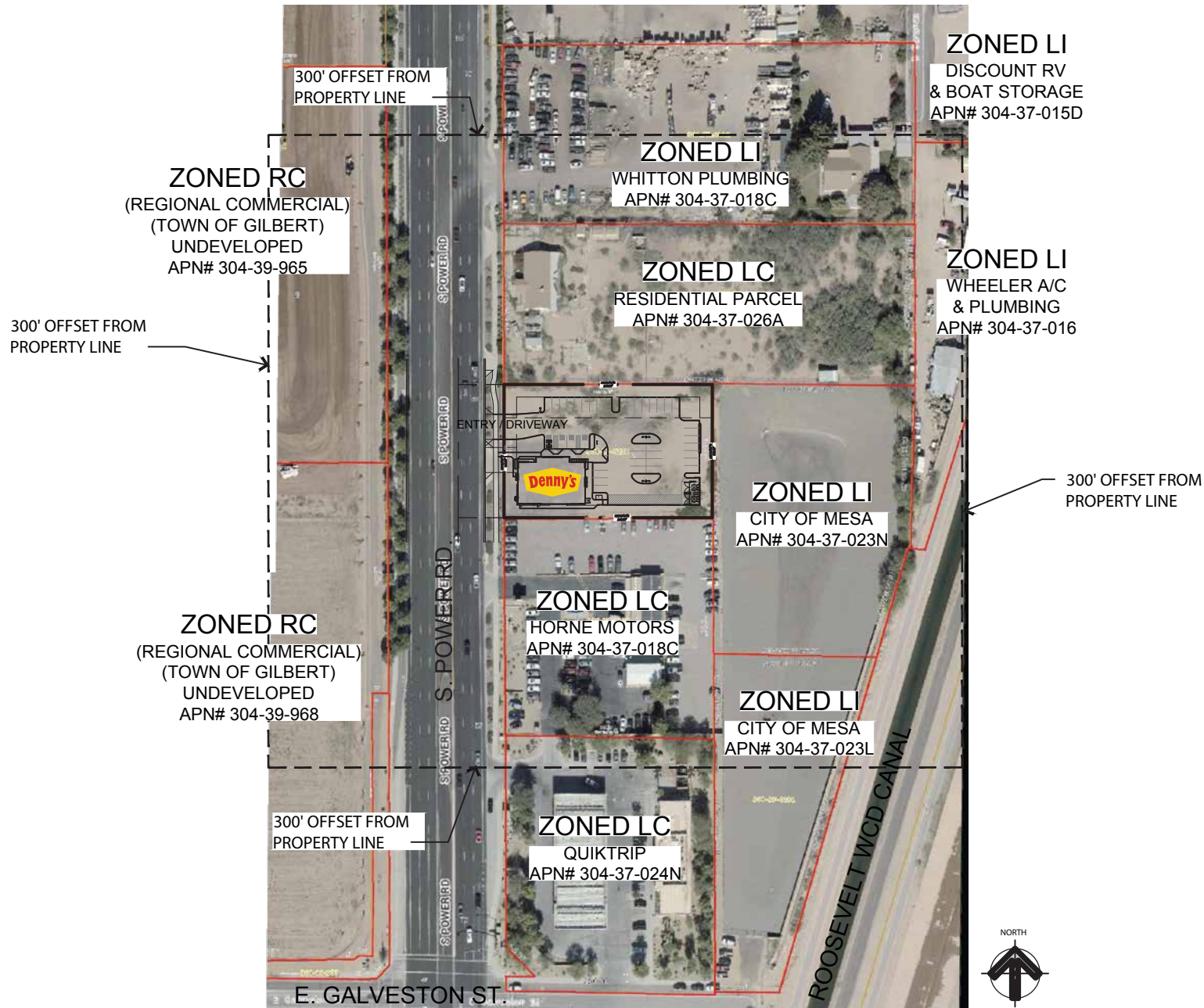
CODE:

Signage allowed:
4 Signs allowed total
160Sq.Ft. allowed
Monument 8' OAH allowed



The attached package is for conceptual visualization and is not to be used for scaled elevations or true signage placement. Subject to change based on modified elevations, municipality code and sign permit allocations. Site survey required for actual dimensions.





PROJECT INFORMATION

Client
DENNY'S
City & State
Mesa, AZ
Drawing #
DENNY'S.Mesa.7-22-19
Scale
AS NOTED
Designer
IH
Project Manager
D. Toohey

REVISIONS

8-20-19 Update to permit - IH
9-23-19 New elevs; Metal Awnings - IH

CLIENT APPROVAL

APPROVED
 APPROVED AS NOTED
 REVISE & RESUBMIT
 NAME:
 DATE:



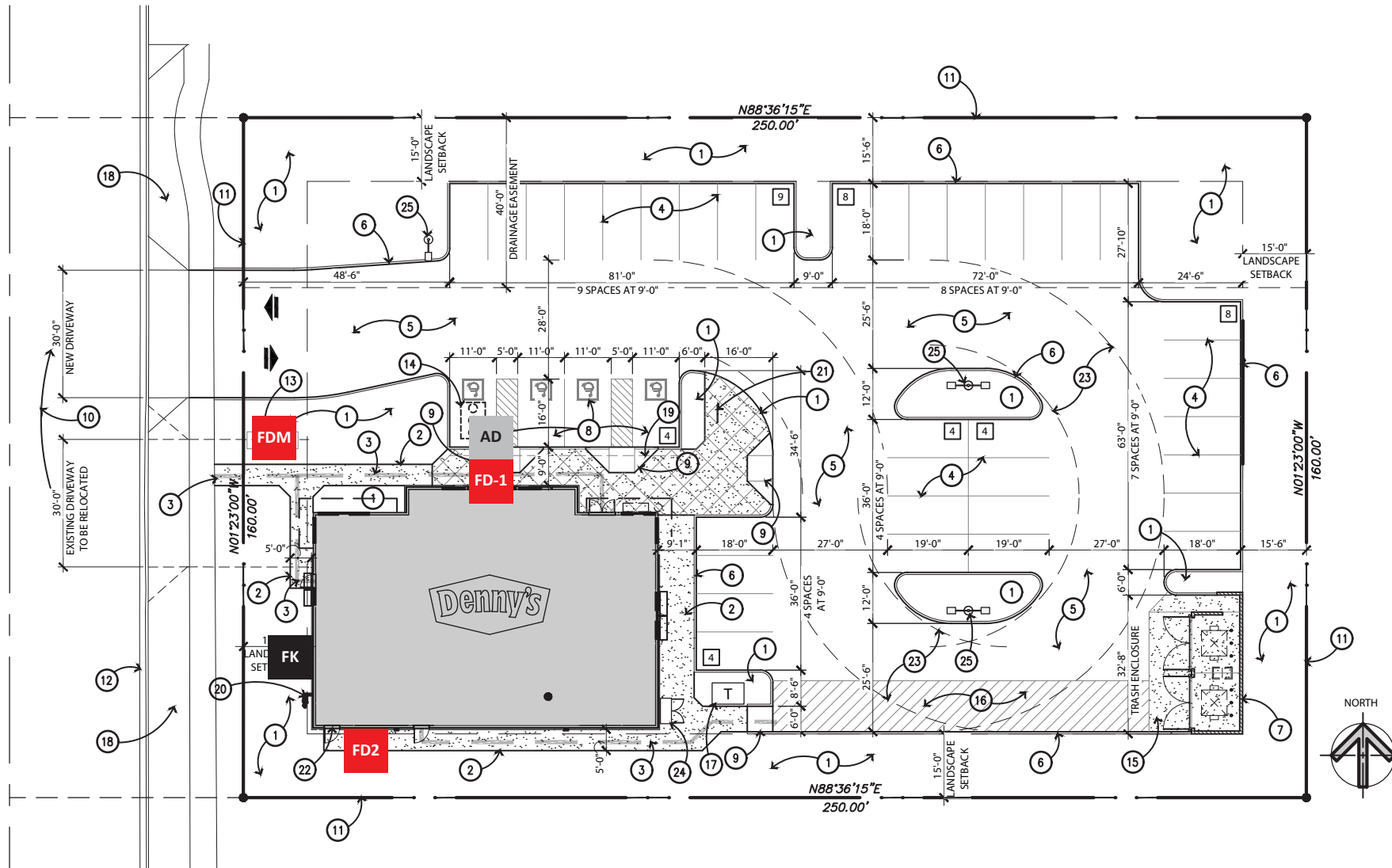
FRANCHISE SIGNS INTERNATIONAL

Main Office
 1101-A W. Melinda Lane
 Phoenix, Arizona 85027
 PHONE: 623 792 3061
 FAX: 623 792 3063

PAGE SIZE: 11x17

Development Plan

S. POWER RD.



PROJECT INFORMATION

Client
DENNY'S
 City & State
 Mesa, AZ
 Drawing #
 DENNY'S.Mesa.7-22-19
 Scale
 AS NOTED
 Designer
 IH
 Project Manager
 D. Toohey

REVISIONS

8-20-19 Update to permit - IH
 9-23-19 New elevs; Metal Awnings - IH

CLIENT APPROVAL

[] APPROVED
 [] APPROVED AS NOTED
 [] REVISE & RESUBMIT
 NAME:
 DATE:



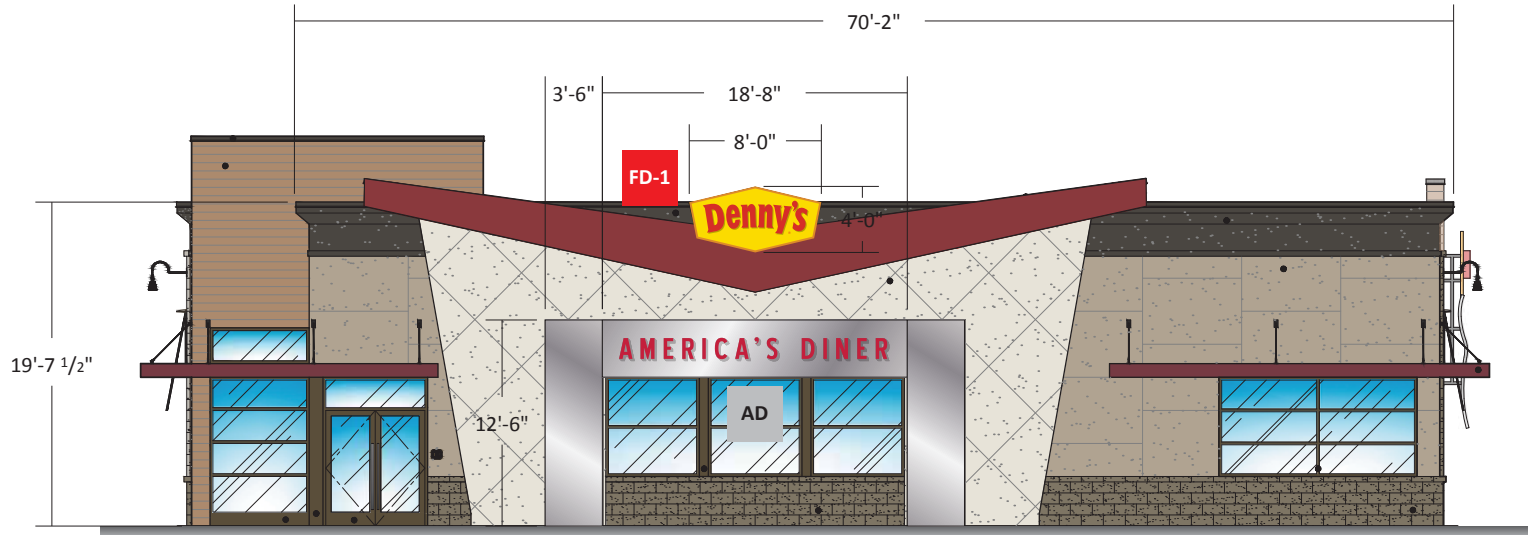
FRANCHISE SIGNS INTERNATIONAL

Main Office
 1101-A W. Melinda Lane
 Phoenix, Arizona 85027
 PHONE: 623 792 3061
 FAX: 623 792 3063

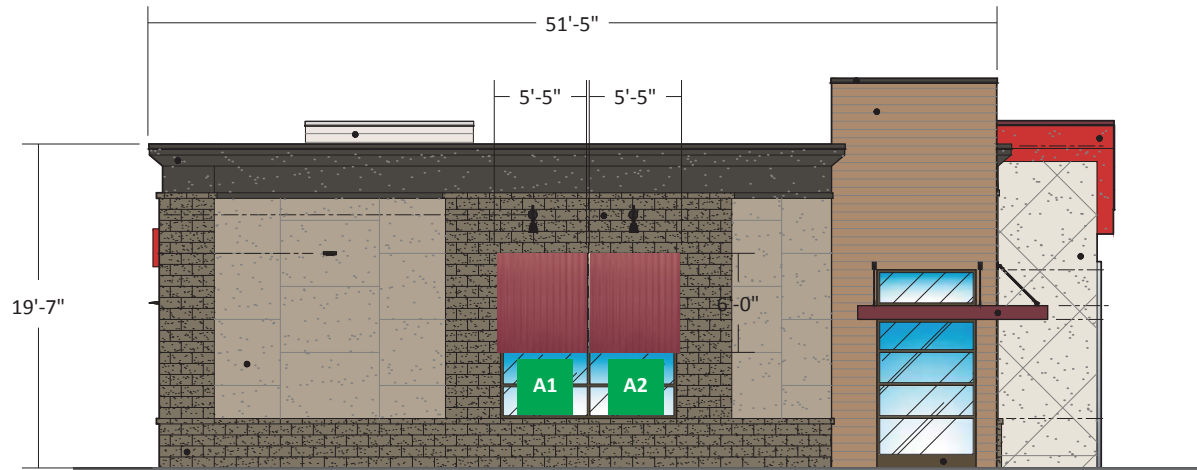
PAGE SIZE: 11x17

Site Plan

PAGE
3



FRONT MAIN ENTRANCE
SCALE: 1/8" = 1'-0"



LEFT ELEVATION
SCALE: 1/8" = 1'-0"



PROJECT INFORMATION

Client
DENNY'S
City & State
Mesa, AZ
Drawing #
DENNY'S.Mesa.7-22-19
Scale
AS NOTED
Designer
IH
Project Manager
D. Toohey

REVISIONS

8-20-19 Update to permit - IH
9-23-19 New elevs; Metal Awnings - IH

CLIENT APPROVAL

APPROVED
 APPROVED AS NOTED
 REVISE & RESUBMIT
NAME:
DATE:



FRANCHISE SIGNS
INTERNATIONAL

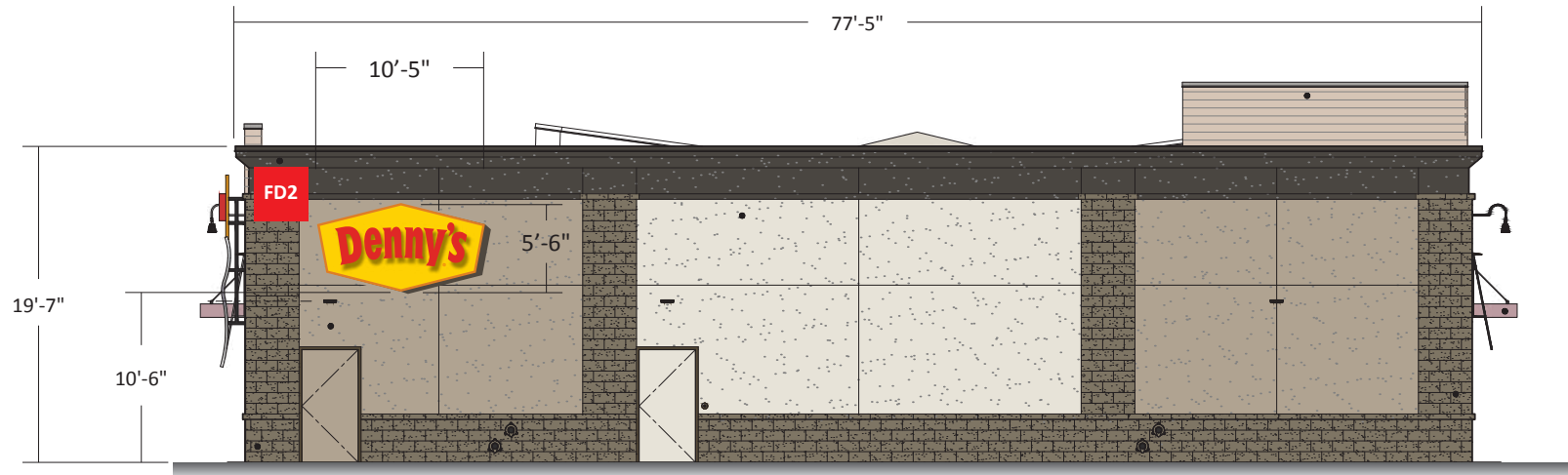
Main Office
1101-A W. Melinda Lane
Phoenix, Arizona 85027
PHONE: 623 792 3061
FAX: 623 792 3063

PAGE SIZE: 11x17

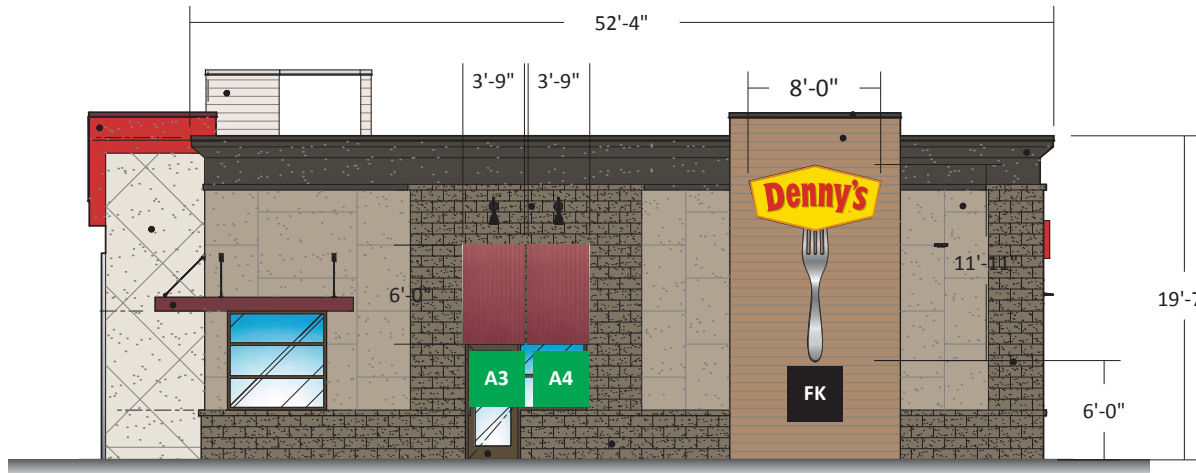
Elevations

PAGE

4



REAR ELEVATION
SCALE: 1/8" = 1'-0"



RIGHT ELEVATION
SCALE: 1/8" = 1'-0"



PROJECT INFORMATION

Client
DENNY'S
City & State
Mesa, AZ
Drawing #
DENNYS.Mesa.7-22-19
Scale
AS NOTED
Designer
IH
Project Manager
D. Toohey

REVISIONS

8-20-19 Update to permit - IH
9-23-19 New elevs; Metal Awnings - IH

CLIENT APPROVAL

APPROVED
 APPROVED AS NOTED
 REVISE & RESUBMIT
NAME:
DATE:



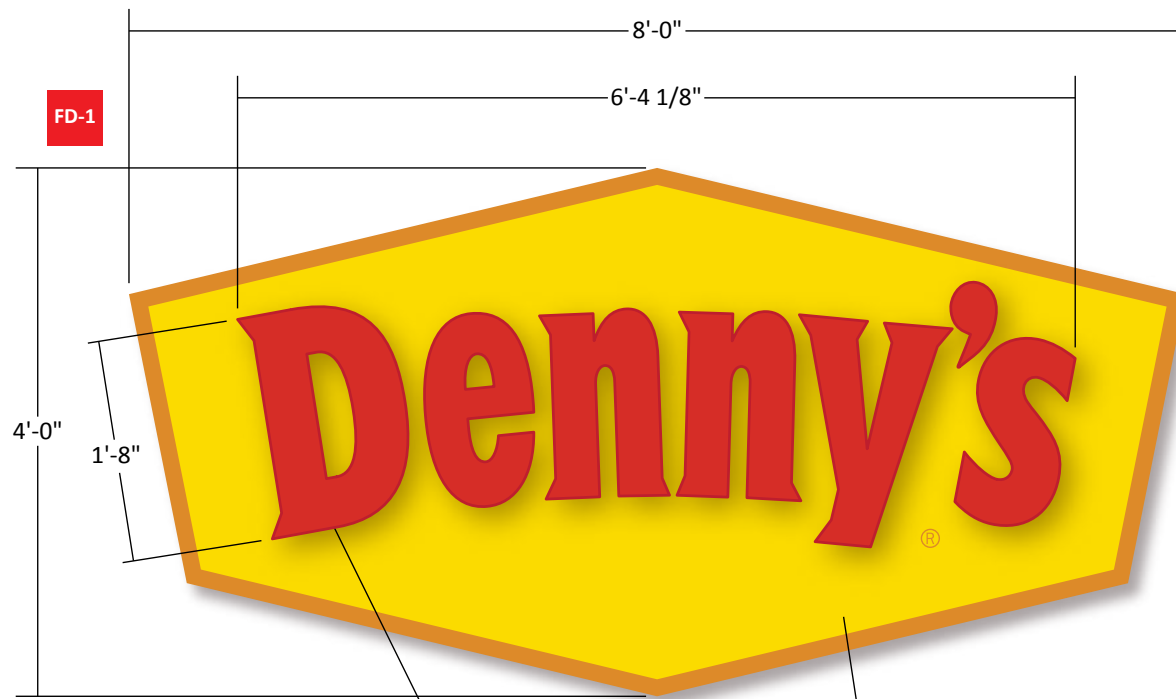
FRANCHISE SIGNS
INTERNATIONAL

Main Office
1101-A W. Melinda Lane
Phoenix, Arizona 85027
PHONE: 623 792 3061
FAX: 623 792 3063

PAGE SIZE: 11x17

Elevations





S. Power Rd., Mesa, AZ 85212

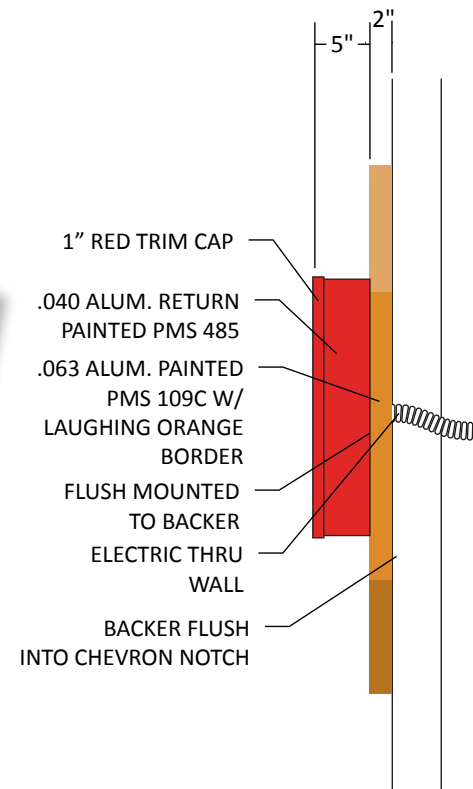


Scale: 1" = 1'-0"

ILLUMINATED CHANNEL LETTERS
ILLUMINATED W/ WHITE LEDS
.040 RED ALUMINUM RETURNS
.063 ALUMINUM BACK
ACRYLIC 2793 RED FACES
1" RED TRIM CAP

NON-ILLUMINATED
.063 ALUMINUM BACKER
2" RETURN

COLOR LEGEND	
	2793 RED PLEX
	PMS 109C YELLOW
	PMS 485C RED - TRIM CAP & RETURNS
	PMS 138C ORANGE - ®



MANUFACTURING SCOPE

- MANUFACTURE (1) SINGLE FACE CHANNEL LETTER CABINET NON-ILLUMINATED, PAN ALUMINUM BACKER W/ LED ILLUMINATED CHANNEL LETTERS. LETTERS MOUNTED FLUSH TO BACKER PANEL & PANEL FLUSH MOUNTED TO WALL
TOTAL SQFT= 32.0
ACTUAL SQFT= 23.5

INSTALLATION SCOPE

- INSTALL TO FLUSH TO WALL



PROJECT INFORMATION

Client
DENNY'S
City & State
Mesa, AZ
Drawing #
DENNYS.Mesa.7-22-19
Scale
AS NOTED
Designer
IH
Project Manager
D. Toohey

REVISIONS

8-20-19 Update to permit - IH
9-23-19 New elevs; Metal Awnings - IH

CLIENT APPROVAL

APPROVED
 APPROVED AS NOTED
 REVISE & RESUBMIT
NAME:
DATE:



FRANCHISE SIGNS INTERNATIONAL

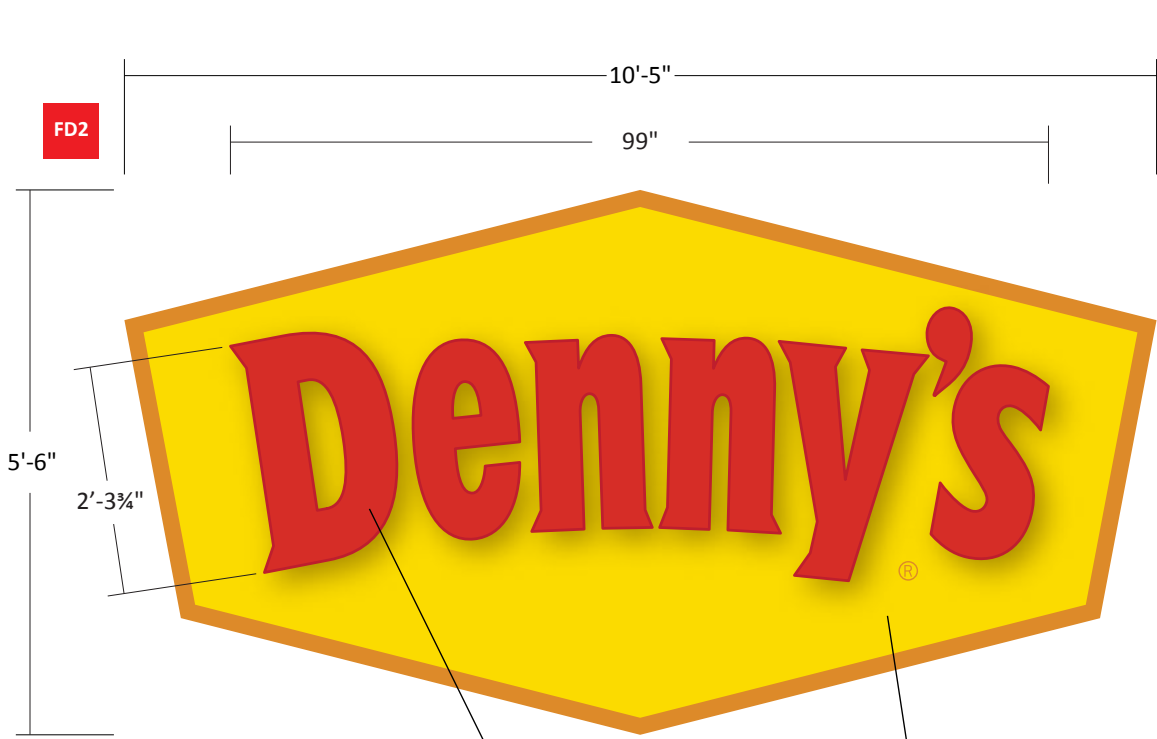
Main Office
1101-A W. Melinda Lane
Phoenix, Arizona 85027
PHONE: 623 792 3061
FAX: 623 792 3063

PAGE SIZE: 11x17

Wall Sign

PAGE

6



Scale: 3/4" = 1'-0"

ILLUMINATED CHANNEL LETTERS
ILLUMINATED W/ WHITE LEDS
.040 RED ALUMINUM RETURNS
.063 ALUMINUM BACK
ACRYLIC 2793 RED FACES
1" RED TRIM CAP

NON-ILLUMINATED
.063 ALUMINUM BACKER
2" RETURN

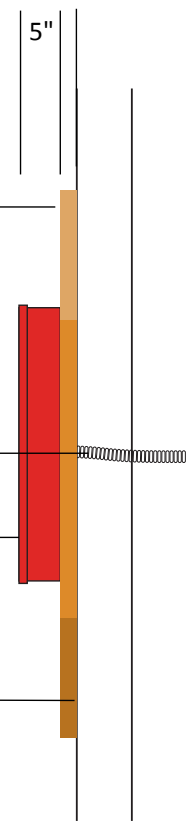
COLOR LEGEND	
	2793 RED PLEX
	PMS 109C YELLOW
	PMS 485C RED - TRIM CAP & RETURNS
	PMS 138C ORANGE - ®

NON-ILLUMINATED
.063 ALUMINUM BACKER
WITH 2" RETURNS
PAINTED PMS 109 YELLOW
W/ LAUGHING ORANGE
RETURNS AND BORDER

ELECTRIC THRU WALL

FABRICATED CHANNEL
LETTERS .040 ALUM.
RETURNS WHITE

BACKER FLUSH
MOUNTED INTO
CHEVRON NOTCH



MANUFACTURING SCOPE

- MANUFACTURE (1) SINGLE FACE CHANNEL LETTER CABINET
NON-ILLUMINATED, PAN ALUMINUM BACKER WITH LED
ILLUMINATED CHANNEL LETTERS. LETTERS MOUNTED FLUSH
TO BACKER PANEL & PANEL FLUSH MOUNTED TO WALL
TOTAL SQFT= 57.2
ACTUAL SQFT= 41.9

INSTALLATION SCOPE

- INSTALL TO FLUSH TO WALL



PROJECT INFORMATION

Client
DENNY'S
City & State
Mesa, AZ
Drawing #
DENNY'S.Mesa.7-22-19
Scale
AS NOTED
Designer
IH
Project Manager
D. Toohey

REVISIONS

8-20-19 Update to permit - IH
9-23-19 New elevs; Metal Awnings - IH

CLIENT APPROVAL

APPROVED
 APPROVED AS NOTED
 REVISE & RESUBMIT
NAME:
DATE:



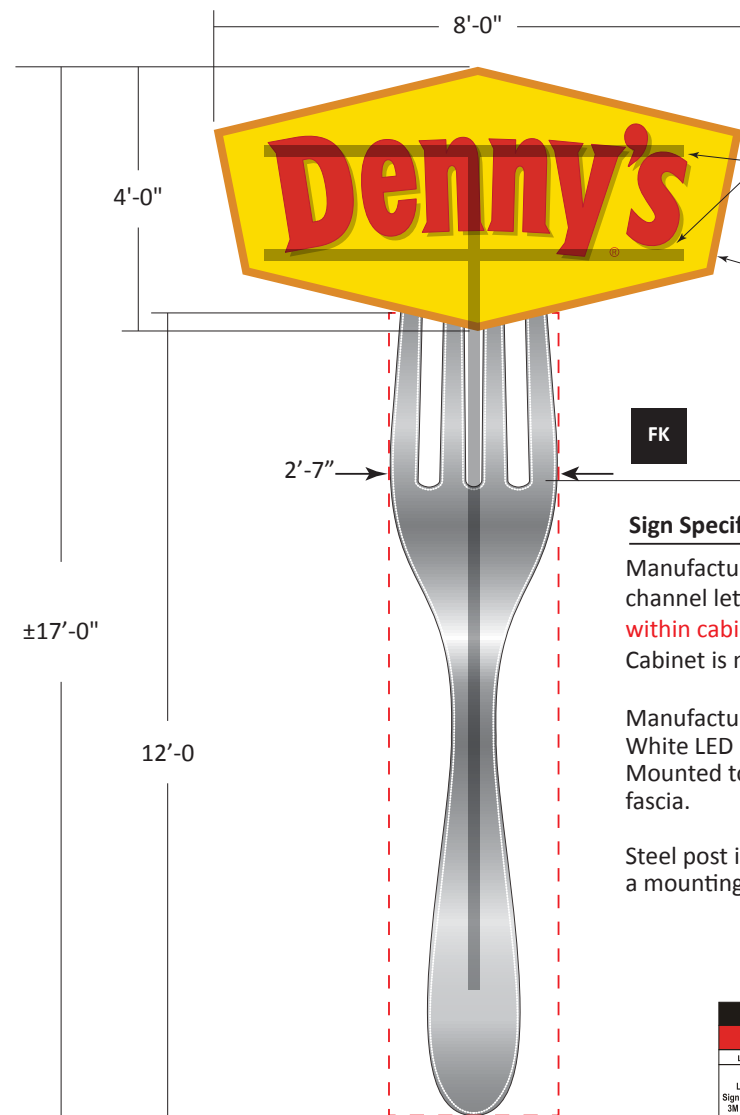
FRANCHISE SIGNS INTERNATIONAL

Main Office
1101-A W. Melinda Lane
Phoenix, Arizona 85027
PHONE: 623 792 3061
FAX: 623 792 3063

PAGE SIZE: 11x17

Wall Sign

S. Power Rd., Mesa, AZ 85212



FDS Cabinet & Fork

Scale: 1/2" = 1'-0"

62.9 Sq. Ft.

Support post forms double "T" behind cabinet. Engineering to confirm adequate support.

Pan aluminum FD backer with LED illuminated channel letters flush mounted to face.

Halo-illuminated aluminum fork
WHITE LED outline lighting

Sign Specifications

Manufacture single face aluminum backer w/ LED illuminated channel letters. **Power supplies for fork LED & Cabinet are located within cabinet.**

Cabinet is mounted onto steel support post.

Manufacture custom fabricated aluminum fork 2" deep. White LED halo illumination (GE). Mounted to steel post with welded brackets. Paint post to match fascia.

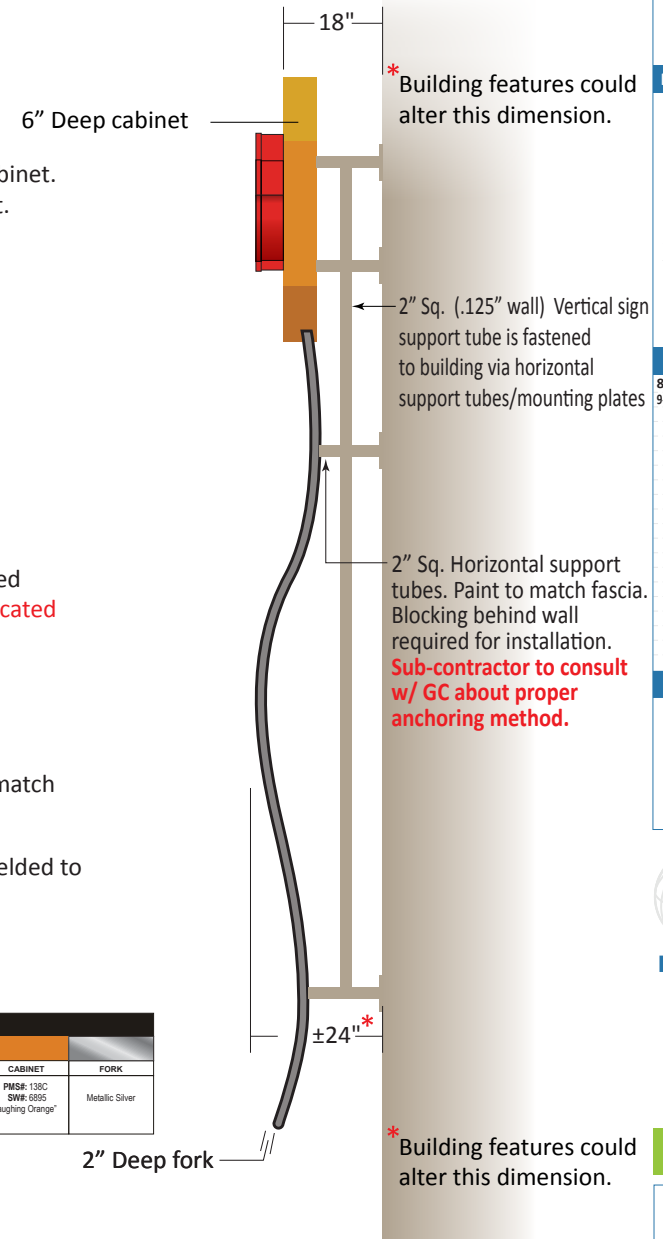
Steel post is attached to building fascia via support tubes welded to a mounting plate that is bolted to fascia.

COLOR LEGEND							
LOGO TYPE	CAST SHADOW	DROP SHADOW	BG YELLOW	BORDER ORANGE	LETTER OUTLINE	CABINET	FORK
PMS#: 485 Lacry#: LS-8145 Sign Tech#: 3232 3M Vinyl#: VT8987	PMS#: 1807C Lacry#: LS-9708 Sign Tech#: 1978 3M Vinyl#: VT8986	PMS#: 131C Lacry#: LS-9709 Sign Tech#: C03-121 3M Vinyl#: VT8985	PMS#: 109C Lacry#: LS-9706 Sign Tech#: 2037 3M Vinyl#: VT8847	PMS#: 138C Lacry#: LS-9708 Sign Tech#: C13-126 3M Vinyl#: VT8846	PMS#: White 3M Vinyl#: Trans White	PMS#: 138C SW#: 6895 "Laughing Orange"	Metallic Silver

Cabinet: 4'-0" x 8'-0" = 32 Sq. Ft.

Fork: 12'-0" x 2'-7" = 30.9 Sq. Ft.

Total = 62.9 Sq. Ft.



Side View

Scale: 1/2" = 1'-0"



PROJECT INFORMATION

Client
DENNY'S
City & State
Mesa, AZ
Drawing #
DENNY'S.Mesa.7-22-19
Scale
AS NOTED
Designer
IH
Project Manager
D. Toohey

REVISIONS

8-20-19 Update to permit - IH
9-23-19 New elevs; Metal Awnings - IH

CLIENT APPROVAL

[] APPROVED
[] APPROVED AS NOTED
[] REVISE & RESUBMIT
NAME:
DATE:



FRANCHISE SIGNS INTERNATIONAL

Main Office
1101-A W. Melinda Lane
Phoenix, Arizona 85027
PHONE: 623 792 3061
FAX: 623 792 3063

PAGE SIZE: 11x17

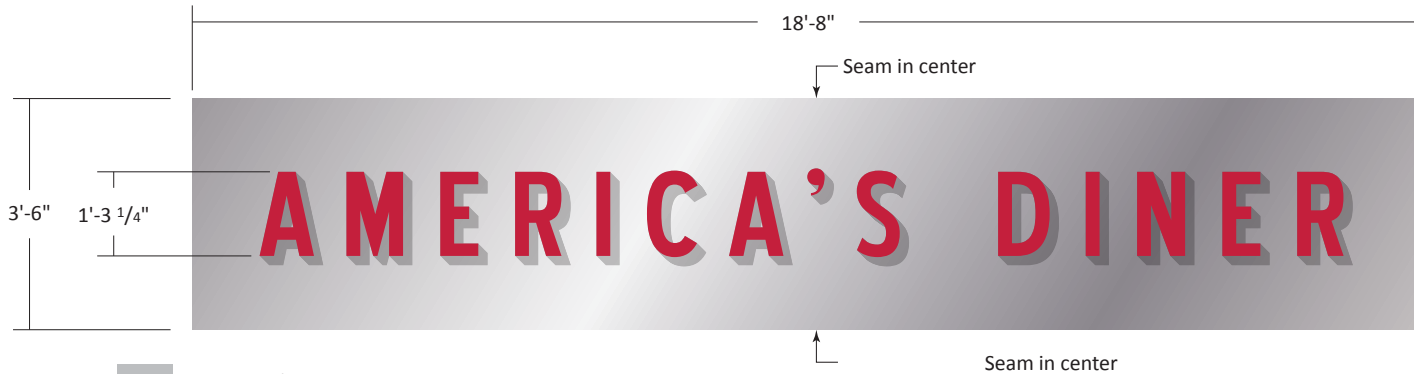
Fork Sign

PAGE
8

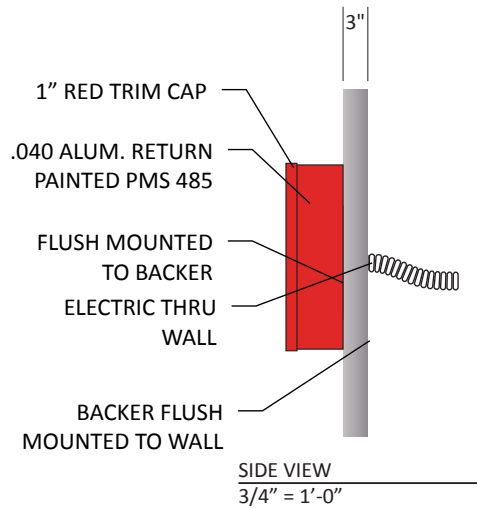
S. Power Rd., Mesa, AZ 85212



PLAN VIEW
1/2" = 1'-0"



AD AMERICA'S DINER SIGN
1/2" = 1'-0"



SIDE VIEW
3/4" = 1'-0"



PROJECT INFORMATION

Client
DENNY'S
City & State
Mesa, AZ
Drawing #
DENNYS.Mesa.7-22-19
Scale
AS NOTED
Designer
IH
Project Manager
D. Toohey

REVISIONS

8-20-19 Update to permit - IH
9-23-19 New elevs; Metal Awnings - IH

CLIENT APPROVAL

APPROVED
 APPROVED AS NOTED
 REVISE & RESUBMIT
NAME:
DATE:



FRANCHISE SIGNS
INTERNATIONAL

Main Office
1101-A W. Melinda Lane
Phoenix, Arizona 85027
PHONE: 623 792 3061
FAX: 623 792 3063

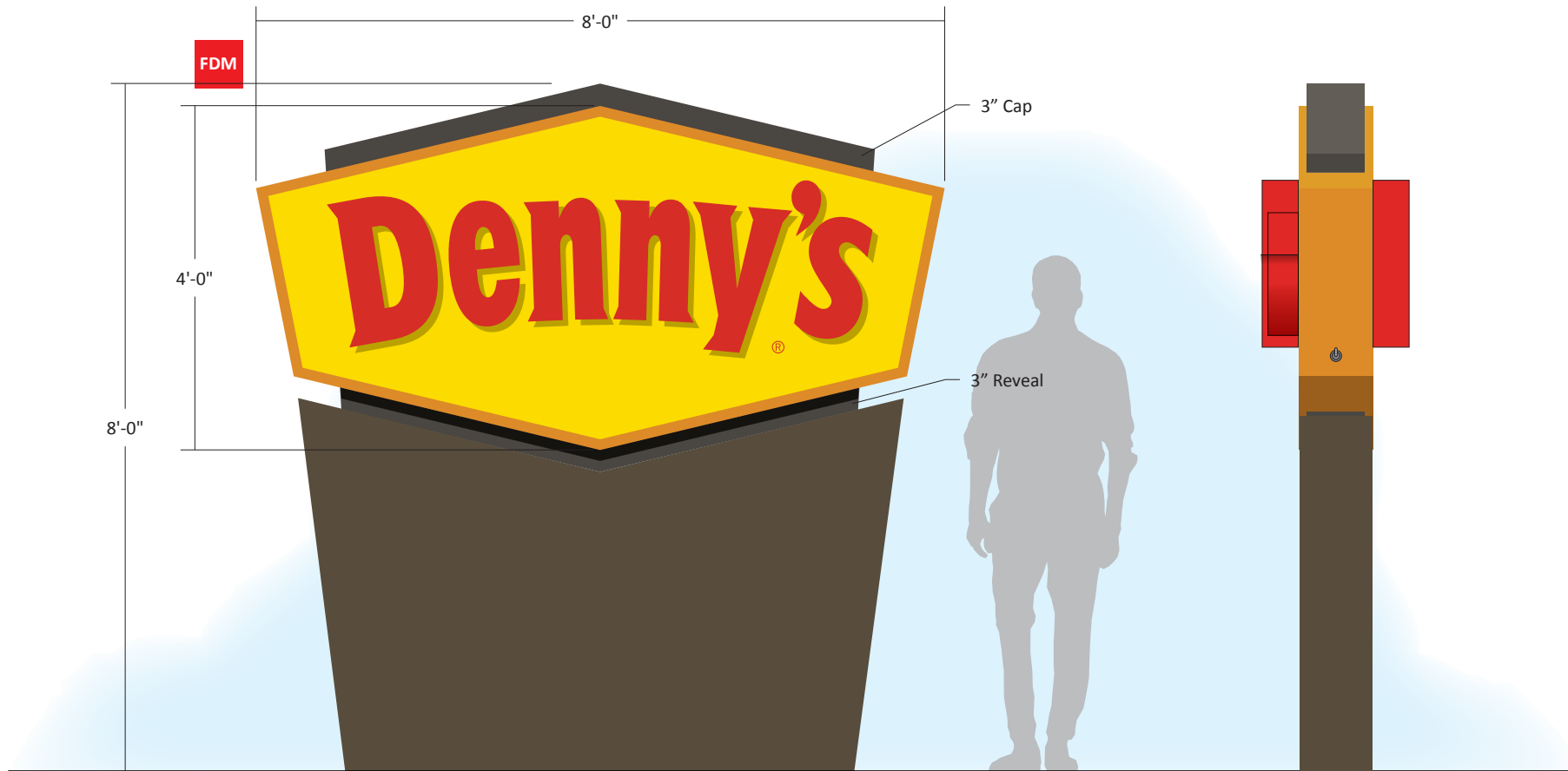
PAGE SIZE: 11x17

AD Sign

PAGE

9

S. Power Rd., Mesa, AZ 85212



PROJECT INFORMATION

Client
DENNY'S
City & State
Mesa, AZ
Drawing #
DENNY'S.Mesa.7-22-19
Scale
AS NOTED
Designer
IH
Project Manager
D. Toohey

REVISIONS

8-20-19 Update to permit - IH
9-23-19 New elevs; Metal Awnings - IH

CLIENT APPROVAL

APPROVED
 APPROVED AS NOTED
 REVISE & RESUBMIT
NAME:
DATE:



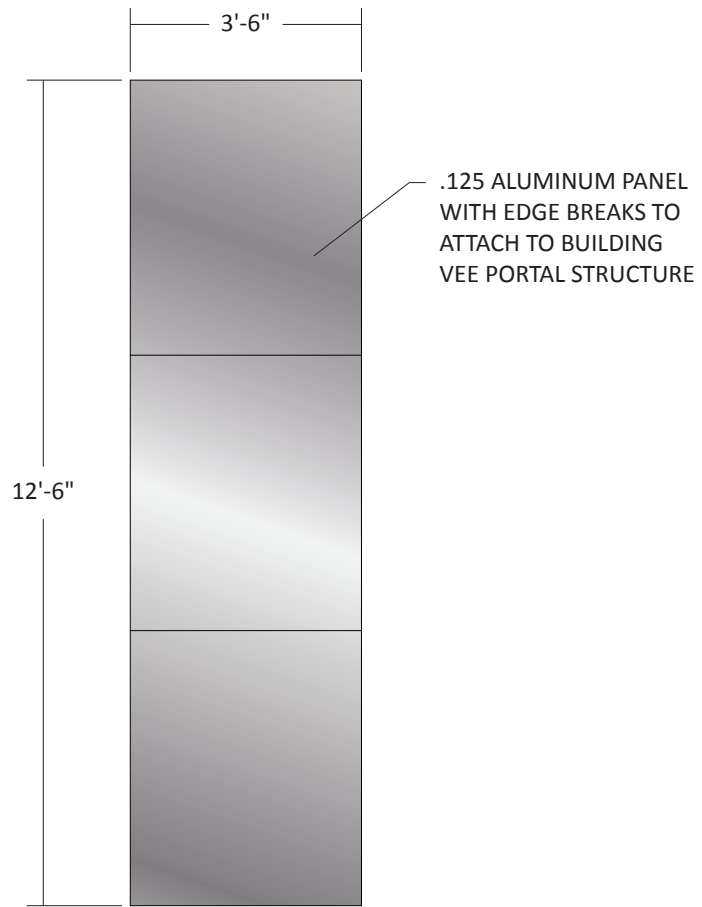
**FRANCHISE SIGNS
INTERNATIONAL**

Main Office
1101-A W. Melinda Lane
Phoenix, Arizona 85027
PHONE: 623 792 3061
FAX: 623 792 3063

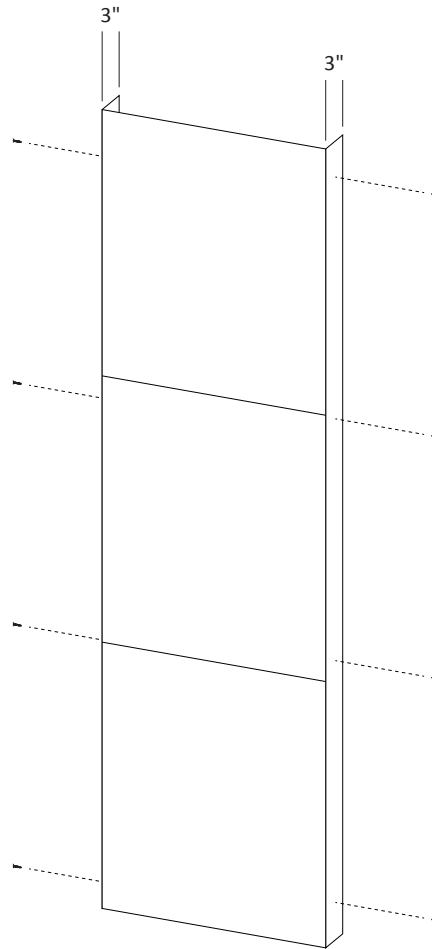
PAGE SIZE: 11x17

Monument Sign

PAGE
12



FRONT VIEW
SCALE: 1/2" = 1'-0"



3D VIEW
SCALE: 1/2" = 1'-0"

SCOPE:
.125 ALUMINUM PANELS TO SKIN OVER VEE PORTAL LEG BUILD-OUTS. EDGE BREAK ON EACH SIDE FOR FASTENING TO THE SIDES WITH COUNTERSUNK SCREWS

COLOR LEGEND	
	Akzo Nobel 352D4 Titanium



PROJECT INFORMATION

Client
DENNY'S
City & State
Mesa, AZ
Drawing #
DENNY'S.Mesa.7-22-19
Scale
AS NOTED
Designer
IH
Project Manager
D. Toohey

REVISIONS

8-20-19 Update to permit - IH
9-23-19 New elevs; Metal Awnings - IH

CLIENT APPROVAL

APPROVED
 APPROVED AS NOTED
 REVISE & RESUBMIT
NAME:
DATE:

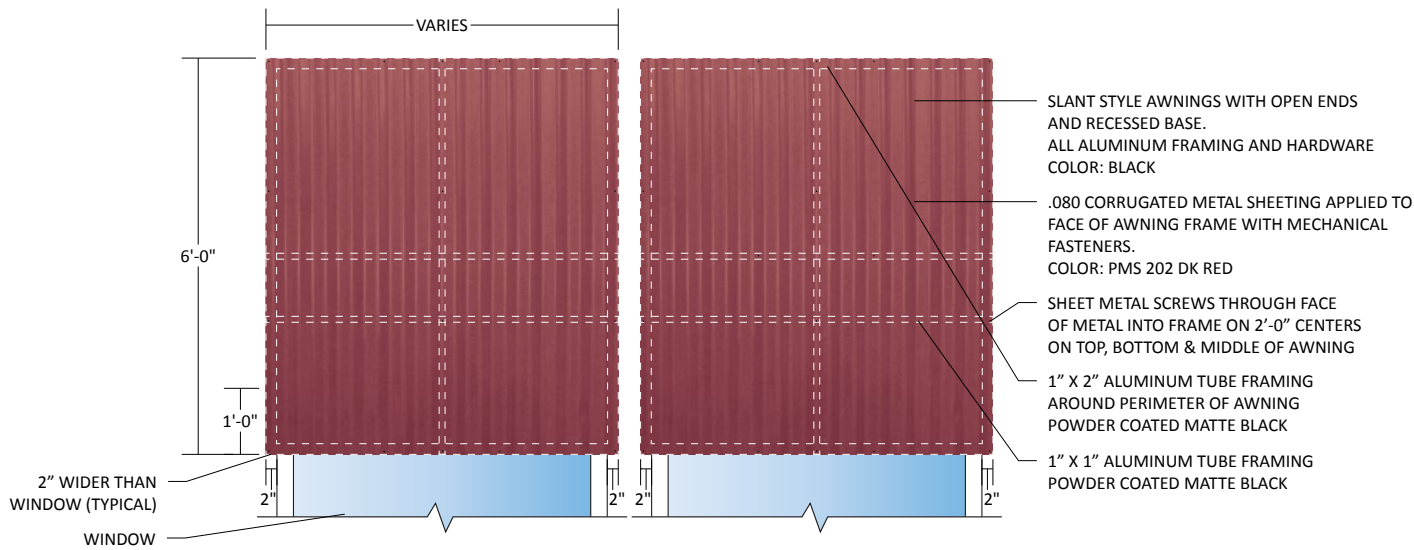


FRANCHISE SIGNS INTERNATIONAL

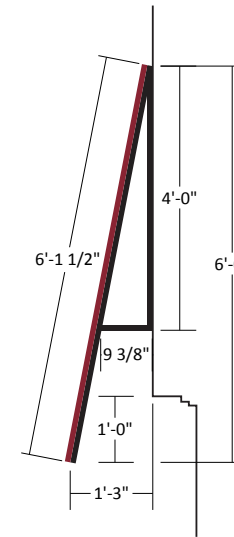
Main Office
1101-A W. Melinda Lane
Phoenix, Arizona 85027
PHONE: 623 792 3061
FAX: 623 792 3063

PAGE SIZE: 11x17

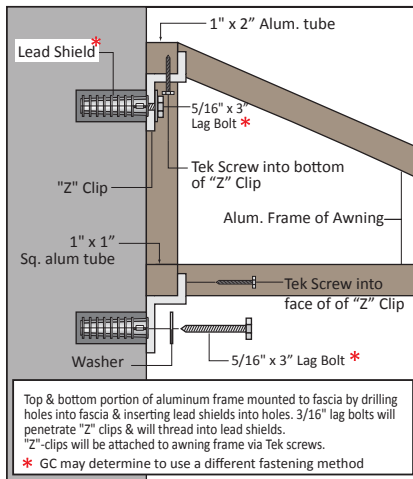
AD Legs



A 2 AWNINGS DETAIL
SCALE: 1/2"=1'-0"



3 SIDE VIEW
SCALE: 1/2"=1'-0"



Mounting Detail for Awnings w/ Aluminum Frames
Scale: NTS



PROJECT INFORMATION

Client
DENNY'S
City & State
Mesa, AZ
Drawing #
DENNYS.Mesa.7-22-19
Scale
AS NOTED
Designer
IH
Project Manager
D. Toohey

REVISIONS

8-20-19 Update to permit - IH
9-23-19 New elevs; Metal Awnings - IH

CLIENT APPROVAL

APPROVED
 APPROVED AS NOTED
 REVISE & RESUBMIT
NAME:
DATE:



FRANCHISE SIGNS INTERNATIONAL

Main Office
1101-A W. Melinda Lane
Phoenix, Arizona 85027
PHONE: 623 792 3061
FAX: 623 792 3063

PAGE SIZE: 11x17

Awnings

PAGE 11