



HDA ARCHITECTS, LLC

PRINCIPALS
LICENSES

PETE BARKER
ARIZONA
CALIFORNIA

BRUCE R. SCOTT
ARIZONA

Fire Station 221
City of Mesa

Site Plan Submittal – Project Narrative

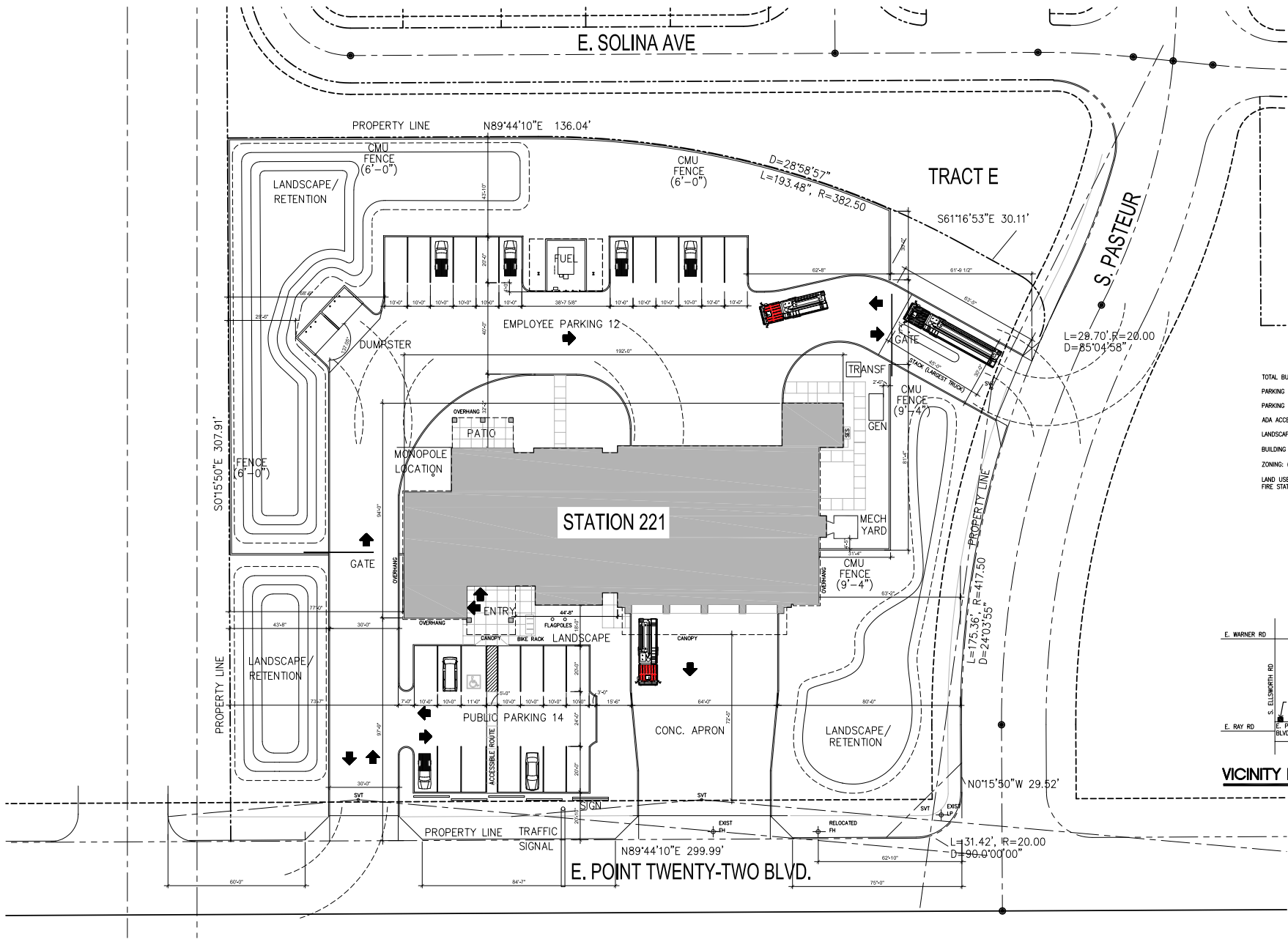
This project consists of the construction of a new 4-bay fire station on approximately 2.3 acres located at E. Point Twenty Two Blvd and S. Pasteur. The project is located in the Eastmark area. The Fire Station is constructed of integral color ground face block construction. Metal horizontal corrugated metal panels accent most elevations. A steel trellis topped with perforated metal screens the Apparatus bay doors. The Station entrance and Community Room entrances are covered with a decorative Kalwall shade structure. The bay doors are to be sectional overhead doors front and rear.

The site is primarily accessed from E. Point Twenty Two Blvd by an entry/exit drive on the west and primary fire apparatus exit on the South. A secondary entry/exit is available from S. Pasteur. Mechanical equipment is screened by a masonry wall. The rear of the site is screened by masonry fencing. The trash enclosure is located in the secured rear yard. A fuel station and employee parking are located at the rear of the site.

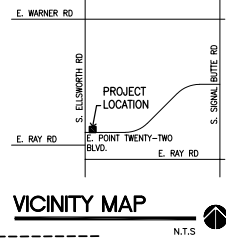
Onsite retention will be provided for the 100-year, 2-hour design storm in surface basins that will be no more than three (3) feet deep. Basin(s) will be constructed along the western and northern boundaries of the property, and shallow percolation pond(s) will be excavated on the east side between the Fire Station and S. Pasteur.

Ultimate stormwater disposal will be handled by an existing 8-inch bleed-off line located at the low point of the site on E. Point Twenty-Two Boulevard and/or S. Pasteur.

Plot Date: 11-12-19 08:04am Drawing scale: 1/4" = 1'-0"
 Drawing file: C:\1903\1903_ARCH\1903_A100
 Last Saved: 10-15-19 02:58pm



TOTAL BUILDING AREA: 14,378 S.F.
 PARKING REQUIRED: 14 SPACES
 PARKING PROVIDED: 26 SPACES
 ADA ACCESSIBLE SPACING PROVIDED: 1 SPACE
 LANDSCAPE AREA: 38,914 S.F.
 BUILDING HEIGHT: 24'-8" FT.
 ZONING: (PC)
 LAND USE GROUP (LUG): CMU SPACE
 FIRE STATION



1 MESA FIRE STATION No. 221 SITE PLAN
 SCALE: 1" = 20'-0"
 2.3 ACRES



CITY OF MESA
MESA FIRE STATION 221
 9820 E. POINT TWENTY-TWO BLVD.
 MESA, AZ

PERMITS
 NOT FOR
 CONSTRUCTION
 OR
 RECORDING

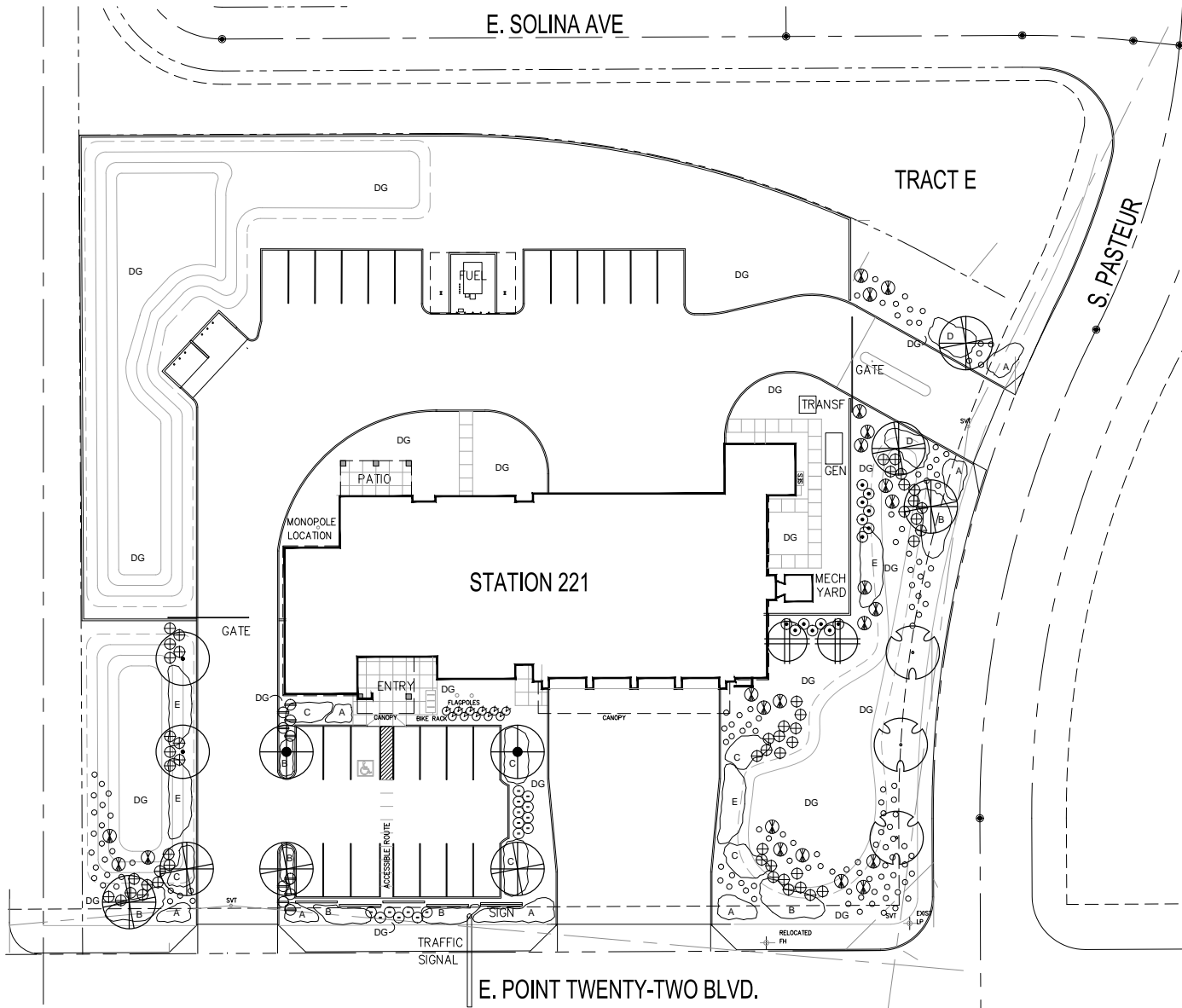
Job No.	1903
Drawn	BRS
Checked	BRS
Date	8-8-2019
Revised	

**DESIGN
 REVIEW**

HDA ARCHITECTS, L.L.C.
 489 N. Gilbert Road, Suite C-400, GILBERT, AZ 85294
 TEL: (480) 589 8600 FAX: (480) 589 8608



Sheet No.
A100



PROPOSED PLANT PALETTE

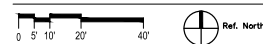
TREES	SIZE / COMMENTS / QTY
	PROSOPIS 'AZT PODLESS HYBRID' / AZT HYBRID PODLESS MESQUITE 48" BOX / LOW BREAKING MATCHED / 2 QTY
	PROSOPIS 'AZT PODLESS HYBRID' / AZT HYBRID PODLESS MESQUITE 36" BOX / LOW BREAKING MATCHED / 7 QTY
	PISTACIA X 'RED PUSH' / RED PUSH PISTACHE 24" BOX / LOW BREAKING MATCHED / 3 QTY
	FRAXINUS X 'FANTEX' / FANTEX ASH 24" BOX / LOW BREAKING MATCHED / 2 QTY
	CHILOPSIS X 'DORA'S DESERT ROSE' / AZT HYBRID DESERT WILLOW 24" BOX / LOW BREAKING MATCHED / 2 QTY
SHRUBS	
	SENNA PHYLLODINEA / SILVERY CASSIA 5 GAL / 23 QTY
	SIMMONDSIA CHINENSIS / JOJOBA 5 GAL / 16 QTY
	LEUCOPHYLLUM LANGMANIEA / RIO BRAVO SAGE 5 GAL / 14 QTY
	RUPELLIA PENINSULARIS / BAJA RUELLIA 5 GAL / 10 QTY
	LEUCOPHYLLUM ZYGOPHYLLUM / CIMARRON SAGE 5 GAL / 52 QTY
	OLEA EUROPAEA X 'LITTLE OLLIE' / LITTLE OLLIE OLIVE 5 GAL / 11 QTY
GROUNDCOVER	
	ERICAMERIA LARICIFOLIA 'AGUIRRE' / TURPENTINE BUSH 1 GAL / 127 QTY
	LANTANA X 'NEW GOLD' / TRAILING YELLOW LANTANA 1 GAL @ 3' O.C. / 87 QTY
	EREMOPHILA GLABRA 'OUTBACK SUNRISE' / OUTBACK SUNRISE EMU 1 GAL @ 3' O.C. / 126 QTY
	ROSMARINUS X 'HUNTINGTON CARPET' / TRAILING ROSEMARY 1 GAL @ 3' O.C. / 108 QTY
	ALOE VERA / MEDICINAL ALOE 1 GAL @ 2.5' O.C. / 59 QTY
	ACACIA REDOLENS 'DESERT CARPET' / DESERT CARPET TRAILING ACACIA 1 GAL @ 4' O.C. / 64 QTY
	DG / DECOMPOSED GRANITE 2" DEPTH TYP.
	DG / 1/2" MINUS GOLD AS SELECTED
	DG / FRACTURED GRANITE 4" DEPTH TYP.
	DG / 1"-3" BROWN COLOR AS SELECTED

GENERAL NOTES

- ALL PLANTING AREAS TO HAVE TOP DRESSING OF DECOMPOSED GRANITE. SIZE & COLOR AS SPECIFIED. 2" THICK, TYP. APPLIED OVER PRE-EMERGENT PER MFG. SPECS. 2 APPLICATIONS, MIN.
- VERIFY ALL CONDITIONS IN FIELD PRIOR TO BIDDING/ INSTALLATION. DISCREPANCIES SHALL BE BROUGHT TO THE LANDSCAPE ARCHITECT'S ATTENTION IN WRITING.
- NO PLANT SUBSTITUTION ALLOWED UNLESS APPROVED BY LANDSCAPE ARCHITECT AND TOWN OF GILBERT.
- LANDSCAPE ARCHITECT TO APPROVE ALL TREES AND SHRUBS PRIOR TO DELIVERY TO SITE.
- LANDSCAPE ARCHITECT OR HIS REPRESENTATIVE RESERVE THE RIGHT TO REFUSE ANY PLANT HE/SHE DEEMS UNACCEPTABLE.
- FOR CLARIFICATION OF DISCREPANCIES BETWEEN THE DRAWINGS AND THE SITE, THEY SHOULD BE BROUGHT TO THE ATTENTION OF THE LANDSCAPE ARCHITECT PRIOR TO BEGINNING WORK.
- LANDSCAPE CONTRACTOR IS RESPONSIBLE TO TAKE PRECAUTIONS TO PROTECT ANY EXISTING IMPROVEMENTS.
- PLANT LIST Q'TYS PROVIDED FOR CONTRACTOR'S CONVENIENCE ONLY. PLANTS TAKE PRECEDENCE.
- FINISHED GRADE BELOW ALL PLANTERS SHALL BE 1" BELOW ADJACENT HEADER, PAVING, CURBING, ETC.
- GROUNDCOVER AND/OR DG SHALL EXTEND UNDER SHRUBS UNLESS NOTED.
- ALL EARTHWORK IS TO BE DONE SO THAT ALL WATER DRAINS AWAY FROM ALL STRUCTURES.
- ALL UNDERGROUND CONDUITS/PIPES/UTILITIES ARE TO BE LOCATED PRIOR TO DIGGING. CONTRACTOR IS RESPONSIBLE FOR ALL REQUIRED SLEEVING WHETHER IT IS SHOWN ON THE PLANS OR NOT.
- ADJUST NEW LANDSCAPE TO ACCOMMODATE EXISTING LANDSCAPE TO REMAIN.
- LANDSCAPE CONTRACTOR RESPONSIBLE TO MAINTAIN EXISTING PLANT MATERIAL TO REMAIN IN GOOD, HEALTHY CONDITION DURING CONSTRUCTION.
- ANY EXISTING PLANT MATERIAL NOT SHOWN TO REMAIN IS TO BE REMOVED BY CONTRACTOR.
- STEEL HEADER TO BE 3/16" THICK COLD ROLL STEEL.

NOTES:
 -REQUIRED TREES SHALL BE MINIMUM SIZE AS SPECIFIED IN THE ARIZONA NURSERY ASSOCIATION "RECOMMENDED TREE SPECIFICATIONS" LATEST EDITION.
 -ALL LANDSCAPE MATERIAL INSTALLED SHALL BE MAINTAINED BY OWNER / OR LESSEE IN ACCORDANCE WITH THE APPROVED LANDSCAPE PLAN.
 -A NATURAL LANDSCAPE MAINTENANCE PROGRAM SHALL BE MAINTAINED IN ACCORDANCE WITH THE BEST MANAGEMENT PRACTICE OF THE LANDSCAPING INDUSTRY.
 -ALL TREES AND SHRUBS LOCATED IN THE LINE OF SIGHT WILL BE MAINTAINED FOR A CLEAR AREA BETWEEN 3' AND 7'. LINE OF SIGHT SHOWN ON PLANS.
 -REQUIRED LANDSCAPING AREAS SHALL BE FREE FROM ENCROACHMENT BY ANY USE, STRUCTURE, OR VEHICLE OR FEATURE NOT A PART OF THE LANDSCAPE DESIGN.
 -BACKFLOW PREVENTERS 2" OR LARGER SHALL BE SCREENED WITH LANDSCAPE MATERIAL LOCATED WITHIN A 6' RADIUS OF THE BACKFLOW PREVENTERS. ALL BACKFLOW PREVENTERS LESS THAN 2" SHALL BE PLACED IN A WIRE MESH BASKET.

CONCEPTUAL PLANTING PLAN



SCALE 1"=20'-0"



CITY OF MESA
MESA FIRE STATION 221
 9820 E. POINT TWENTY TWO BLVD.
 MESA, AZ



Job No. 1903
 Drawn
 Checked
 Date 11-08-2019
 Revised

DESIGN REVIEW

HDA ARCHITECTS, L.L.C.
 489 N. Gilbert Road, Suite C-200, Gilbert, AZ 85294
 TEL: (480) 589 8600 FAX: (480) 539 8608



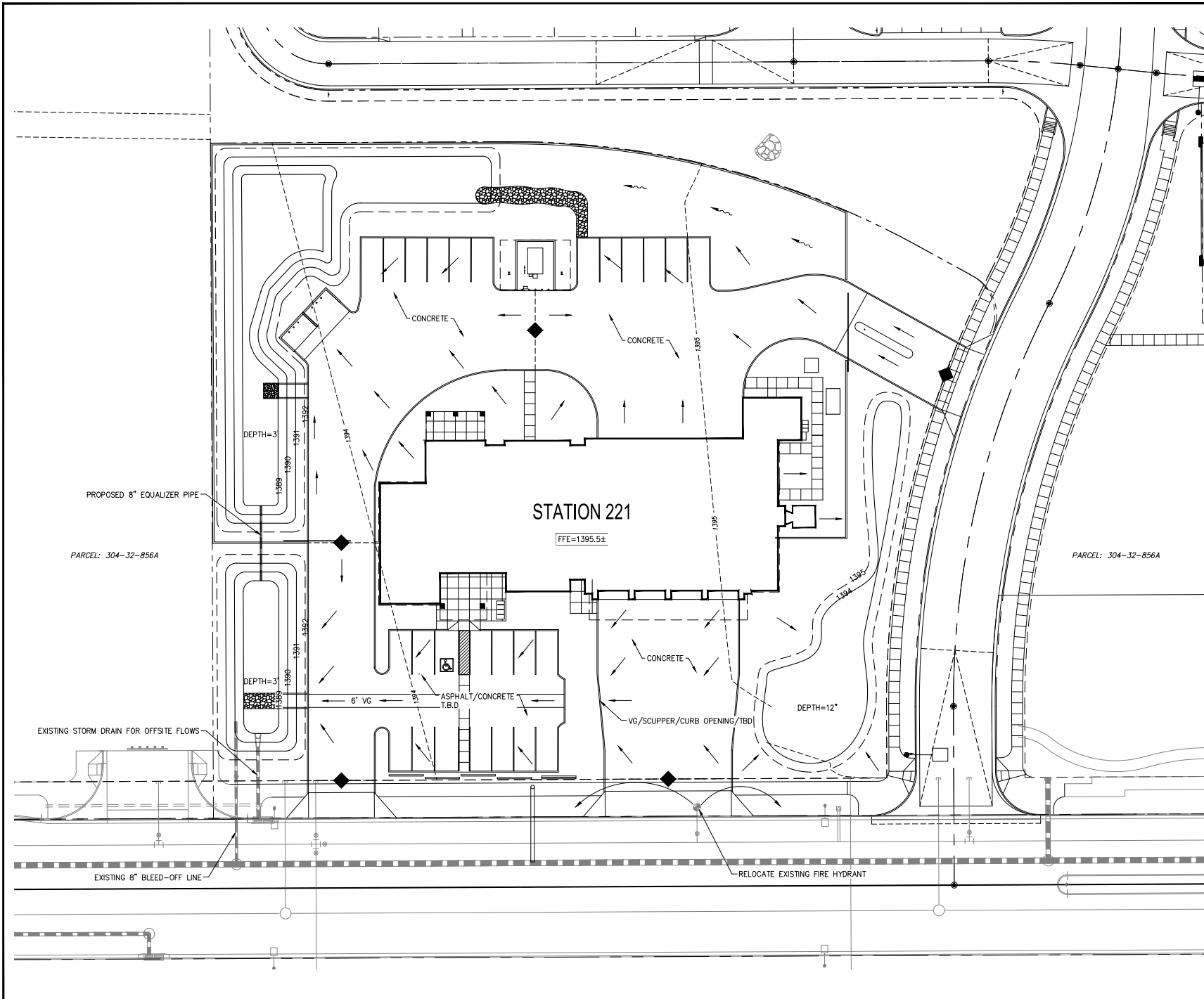
Sheet No.

L100



4820 N. 44th Street
 Phoenix, AZ 85018
 602.972.0000
 602.972.0000 fax

Plot Date: 11/08/19 09:26am Drawing Scale: 1:1 By: J.A.H. Drawing File: P:\HDA Mesa Fire Station 21\09231-02_BLS.dwg Last Saved: 11/08/19 09:42am



VOLUME REQUIRED = C X D X A
 C = WEIGHTED RUNOFF COEFFICIENT
 D = PRECIPITATION DEPTH (100 YEAR, 2 HOUR)
 A = DRAINAGE AREA

ONSITE RUNOFF = 0.85 (0.183) 90,515
 OFFSITE VOLUME = 14,080 CF
 TOTAL REQUIRED = 4,356 CF
 TOTAL REQUIRED = 18,436 CF

VOLUME PROVIDED
 BASIN A = 6,998 CF
 BASIN B = 16,124 CF
 TOTAL = 23,122 CF

12" BASIN (C) NOT INCLUDED IN VOL. PROV.

LEGEND

- DRAINAGE FLOW DIRECTION
- PROPOSED SWALE
- GRADE BREAK



SCALE
 0 20' 40'
 HORIZ: 1" = 20'

CITY OF MESA, AZ

HIDA
 HIDA ARCHITECTS, LLC.

REV. NO.	COMMENT	DATE

FOR REVIEW ONLY
 NOT FOR CONSTRUCTION

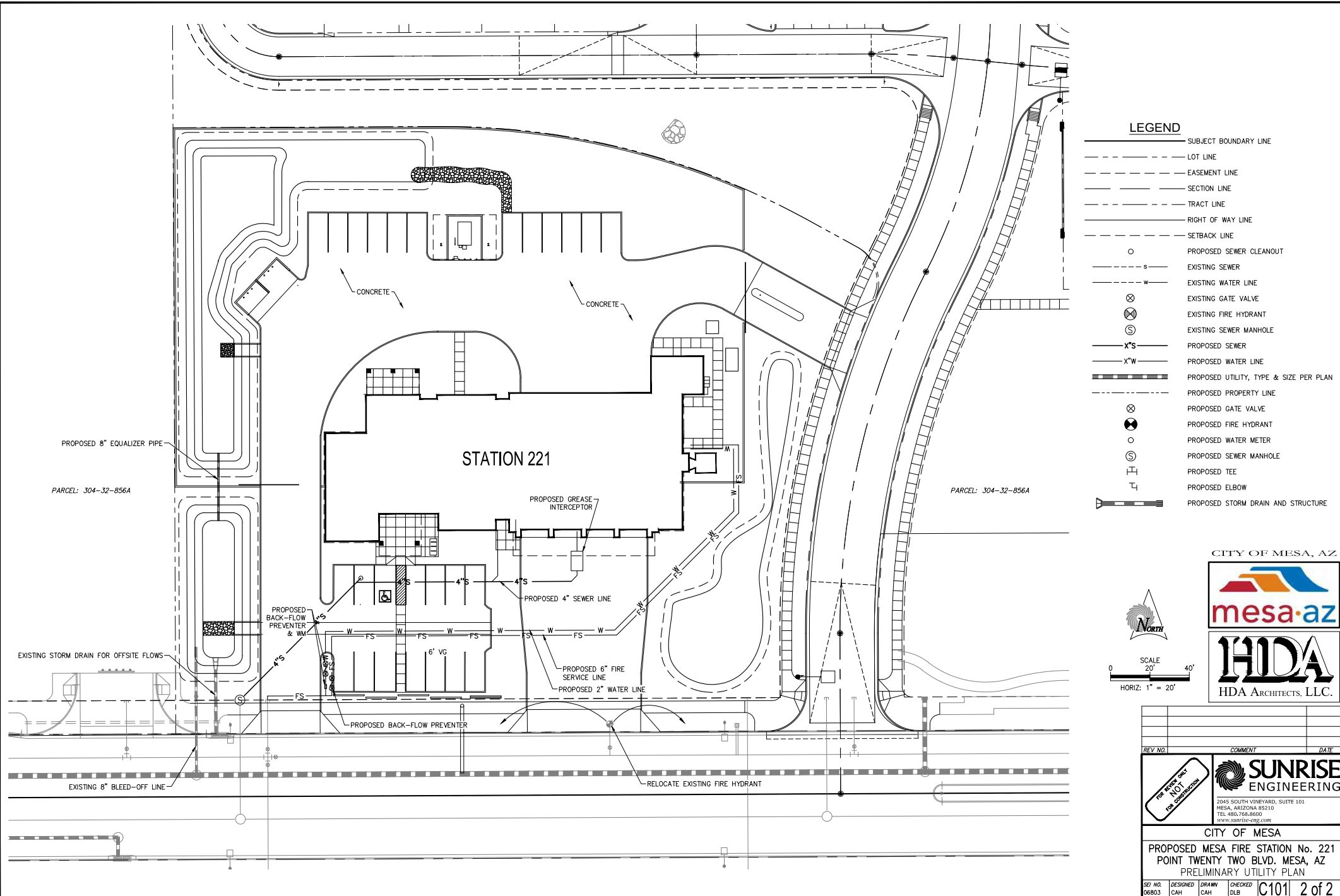
SUNRISE ENGINEERING
 2045 SOUTH VINEYARD, SUITE 101
 MESA, ARIZONA 85210
 TEL 480.768.8600
 WWW.SUNRISE-ENG.COM

CITY OF MESA

PROPOSED MESA FIRE STATION No. 221
 POINT TWENTY TWO BLVD. MESA, AZ
 PRELIMINARY GRADING & DRAINAGE PLAN

SET NO. 06803	DESIGNED CAH	DRAWN CAH	CHECKED DLB	C100 1 of 2
------------------	-----------------	--------------	----------------	---------------

P:\VIA\06803\resmark_fire station\06803-01.dwg Nov 04, 2019 11:00am Generics



LEGEND

- SUBJECT BOUNDARY LINE
- LOT LINE
- EASEMENT LINE
- SECTION LINE
- TRACT LINE
- RIGHT OF WAY LINE
- SETBACK LINE
- PROPOSED SEWER CLEANOUT
- s --- EXISTING SEWER
- w --- EXISTING WATER LINE
- ⊗ EXISTING GATE VALVE
- ⊗ EXISTING FIRE HYDRANT
- ⊙ EXISTING SEWER MANHOLE
- x"s --- PROPOSED SEWER
- x"w --- PROPOSED WATER LINE
- PROPOSED UTILITY, TYPE & SIZE PER PLAN
- PROPOSED PROPERTY LINE
- ⊗ PROPOSED GATE VALVE
- ⊗ PROPOSED FIRE HYDRANT
- PROPOSED WATER METER
- ⊙ PROPOSED SEWER MANHOLE
- ⊥ PROPOSED TEE
- ⊥ PROPOSED ELBOW
- PROPOSED STORM DRAIN AND STRUCTURE



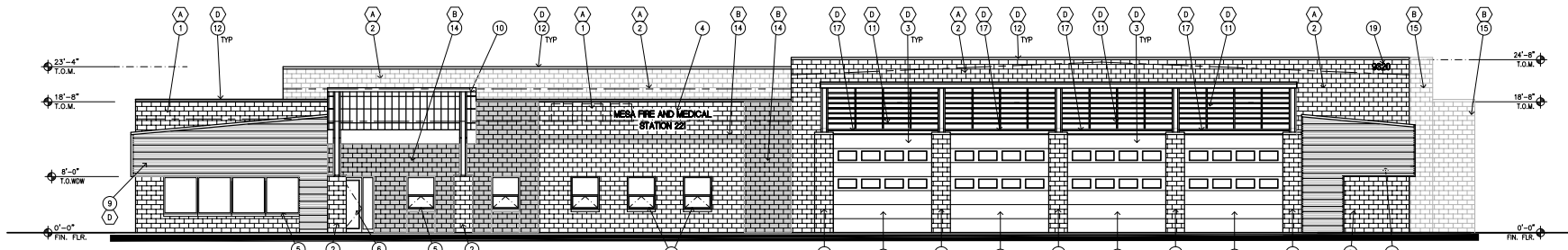
SCALE
0 20' 40'
HORIZ: 1" = 20'

CITY OF MESA, AZ

HIDA
HIDA ARCHITECTS, L.L.C.

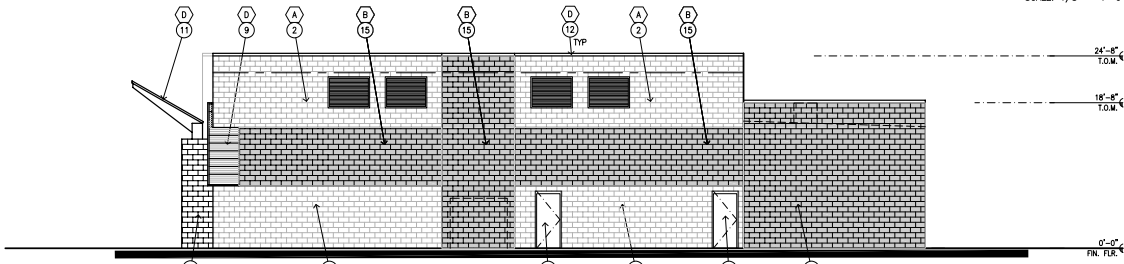
REV. NO.	COMMENT	DATE
<p>SUNRISE ENGINEERING 2045 SOUTH VINEYARD, SUITE 101 MESA, ARIZONA 85210 TEL 480.768.8600 WWW.SUNRISE-ENG.COM</p>		
<p>CITY OF MESA PROPOSED MESA FIRE STATION No. 221 POINT TWENTY TWO BLVD, MESA, AZ PRELIMINARY UTILITY PLAN</p>		
DESIGNED 06803	DRAWN CAH	CHECKED DLB
		C101 2 of 2

P:\VIA\06803\examark_mesa_station_221\05-11-17.dwg Nov. 04, 2019 11:06m alexandria



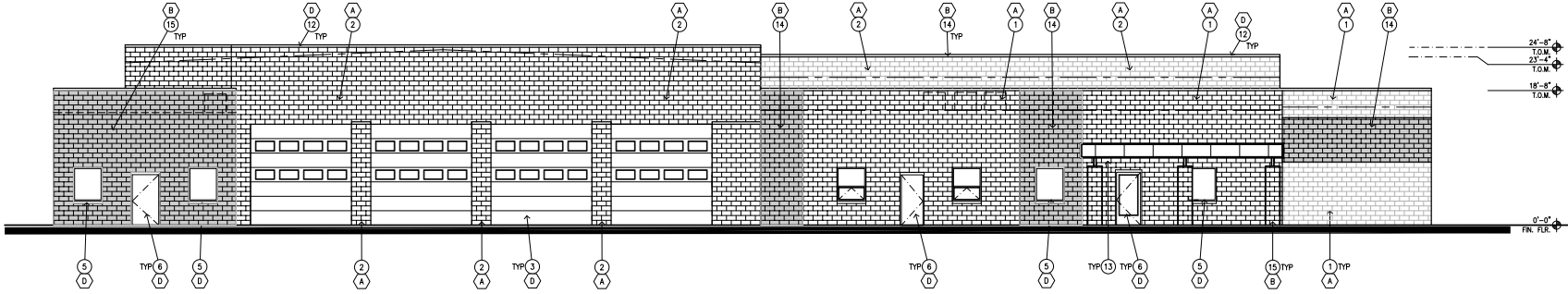
1 SOUTH ELEVATION

SCALE: 1/8" = 1'-0"



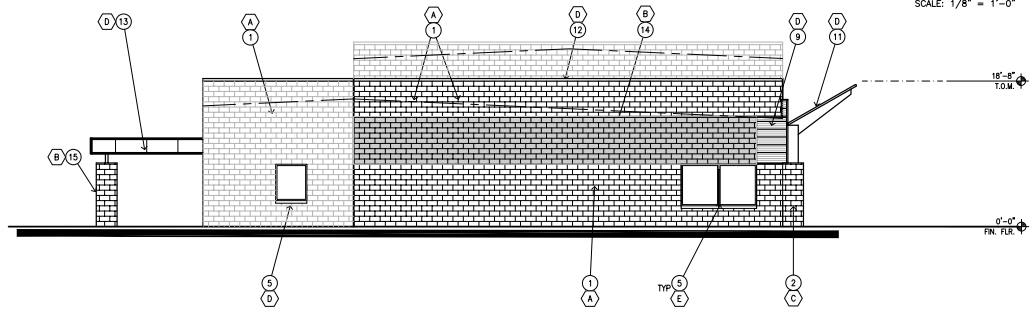
2 EAST ELEVATION

SCALE: 1/8" = 1'-0"



3 NORTH ELEVATION

SCALE: 1/8" = 1'-0"



4 WEST ELEVATION

SCALE: 1/8" = 1'-0"

NOTES

NOT ALL NOTES APPLY TO THIS SHEET.

1. 4"x8"x16" INTEGRAL COLOR GROUND FACE CMU VENEER.
2. 8"x8"x16" INTEGRAL COLOR GROUND FACE CMU.
3. SECTIONAL OVERHEAD DOOR AT APPARATUS BAY.
4. MIN. 12" HIGH CAST METAL BUILDING SIGNAGE.
5. ALUMINUM WINDOW AND FRAME.
6. DOOR AND FRAME.
7. CMU SCREEN WALL FOR MECHANICAL EQUIPMENT.
8. EXTERIOR WALL MOUNTED LIGHT FIXTURE.
9. METAL FASCIA SYSTEM.
10. KNOXMAIL PANEL SYSTEM WITH ANODIZED, STEEL FRAME.
11. STEEL LOWER CANOPY SYSTEM.
12. METAL COPING.
13. COVERED OUTDOOR DINING.
14. 4"x8"x16" INTEGRAL COLOR SPLIT FACE CMU VENEER.
15. 8"x8"x16" INTEGRAL COLOR SPLIT FACE CMU.
16. CULTURED STONE VENEER.
17. STEEL BEAM LINTEL.
18. NOT USED.
19. 10" METAL ADDRESS NUMBERS.

GENERAL NOTES

- A. ALL GROUND MECHANICAL EQUIPMENT WILL BE SCREENED BY MASONRY WALLS MINIMUM 2" HIGHER THAN EQUIPMENT. ELECTRICAL WILL BE SCREENED BY THE BUILDING FROM THE PUBLIC.
- B. MAXIMUM MOUNTING HEIGHTS FOR LIGHT FIXTURES ARE 14'-0".

COLOR SCHEDULE

- (A) WHITE CMU - TRENSTONE - "MISSION WHITE", INTEGRAL COLOR, GROUND FACE (FIELD)
- (B) DARK BROWN CMU - SUPERLITE - "PLUM", INTEGRAL COLOR, SPLIT FACE (ACCENT)
- (C) BROWN CMU - SUPERLITE - "UMBER BROWN", INTEGRAL COLOR, STANDARD FACE (COLUMNS)
- (D) ALUMINUM FINISH TO BE PAINTED TO MATCH - DE6041 "MISSING LINK", DOORS/SIGNAGE/LOUVERS/COPING CANOPY/LINTELS
- (E) GREEN GLASS - 1/2" INSULATED GLAZING UNITS: SOLSXA 3mm (OUTDOOR) - AIR 1/4"(CENTER) - SOLARBAN 70XL ON CLEAR 3mm (INDOOR)



CITY OF MESA
MESA FIRE STATION 221
 9830 E. POINT TWENTY-TWO BLVD.
 MESA, AZ



Job No. 1903
 Drawn EPA
 Checked BRS
 Date 8-8-2018
 Revised

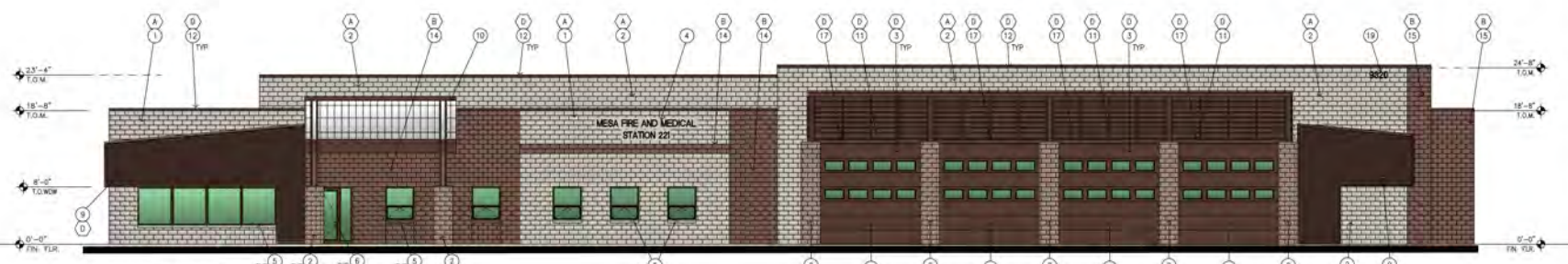
DESIGN REVIEW

HDA ARCHITECTS, LLC.
 459 N. Gilbert Road, Suite C-200, GILBERT, AZ 85294
 TEL: (480) 539 8600 FAX: (480) 539 8606
BUILDING ELEVATIONS



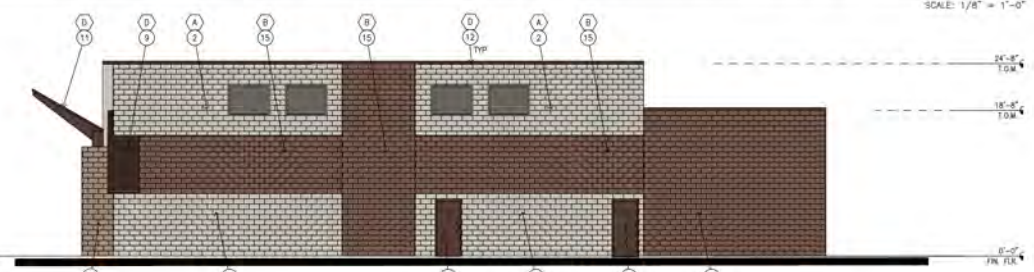
Sheet No.
A301

Plot Date: 11-03-19 10:01am Drawing scale: 1:1 By: dmsimon
 User: dmsimon File: C:\Users\dmsimon\OneDrive\Documents\2019\11-03-19\191103-001\191103-001.dwg
 User: dmsimon File: C:\Users\dmsimon\OneDrive\Documents\2019\11-03-19\191103-001\191103-001.dwg
 User: dmsimon File: C:\Users\dmsimon\OneDrive\Documents\2019\11-03-19\191103-001\191103-001.dwg



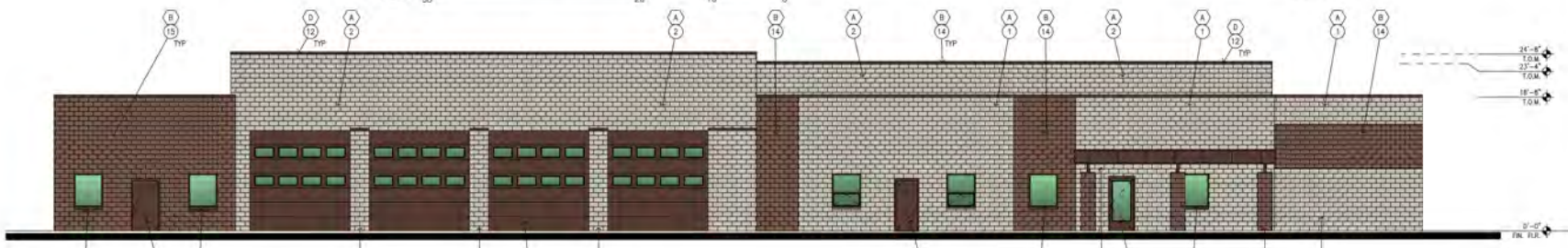
1 SOUTH ELEVATION

SCALE: 1/8" = 1'-0"



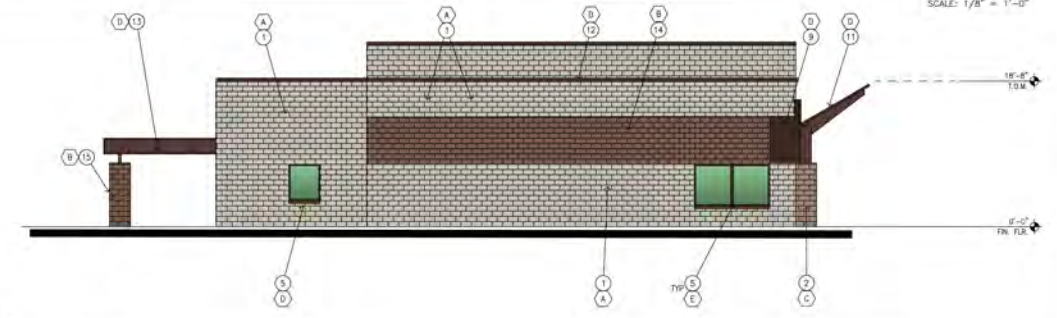
2 EAST ELEVATION

SCALE: 1/8" = 1'-0"



3 NORTH ELEVATION

SCALE: 1/8" = 1'-0"



4 WEST ELEVATION

SCALE: 1/8" = 1'-0"

- NOTES**
NOT ALL NOTES APPLY TO THIS SHEET.
1. 4"x8"x16" INTEGRAL COLOR GROUND FACE CMU VENEER.
 2. 8"x8"x16" INTEGRAL COLOR GROUND FACE CMU.
 3. SECTIONAL OVERHEAD DOOR AT APPARATUS BAY.
 4. MIN. 12" HIGH CAST METAL BUILDING SIGNAGE.
 5. ALUMINUM WINDOW AND FRAME.
 6. DOOR AND FRAME.
 7. CMU SCREEN WALL FOR MECHANICAL EQUIPMENT.
 8. EXTERIOR WALL MOUNTED LIGHT FIXTURE.
 9. METAL FASCIA SYSTEM.
 10. METAL PANEL SYSTEM WITH ANODIZED, STEEL FRAME.
 11. STEEL LOUVER CANOPY SYSTEM.
 12. METAL COPING.
 13. COVERED OUTDOOR DINING.
 14. 4"x8"x16" INTEGRAL COLOR SPLIT FACE CMU VENEER.
 15. 8"x8"x16" INTEGRAL COLOR SPLIT FACE CMU.
 16. CULTURED STONE VENEER.
 17. STEEL BEAM LINTEL.
 18. NOT USED.
 19. 10" METAL ADDRESS NUMBERS.

GENERAL NOTES

A. ALL GROUND MECHANICAL EQUIPMENT WILL BE SCREENED BY MASONRY WALLS MINIMUM 2" THICKER THAN EQUIPMENT ELECTRICAL WILL BE SCREENED BY THE BUILDING TO THE PUBLIC.

B. MASONRY MOUNTING HEIGHTS FOR LIGHT FIXTURES ARE 14'-0"

- COLOR SCHEDULE**
- (A) WHITE CMU - TRENSTONE - "MISSION WHITE", INTEGRAL COLOR, GROUND FACE (FIELD).
 - (B) DARK BROWN CMU - SUPERLITE - "FLAM", INTEGRAL COLOR, SPLIT FACE (ACCENT).
 - (C) BROWN CMU - SUPERLITE - "UMBER BROWN" INTEGRAL COLOR, STANDARD FACE (COLUMNS).
 - (D) ALUMINUM FINISH TO BE PAINTED TO MATCH - DE6041 "MISSING LINK", DOORS/SIGNAGE/LOUVERS/COPING CANOPY/LINTELS.
 - (E) GREEN GLASS - 1/2" INSULATED GLAZING UNITS: SOLERA 3mm (OUTDOOR) - AIR 1/4" (CENTER) - SOLARBAN 70XL ON CLEAR 3mm (INDOOR).



CITY OF MESA
MESA FIRE STATION 221
9820 E. POINT TWENTY-TWO BLVD.
MESA, AZ



2702
SCOTT
SCOTT
02/20/20

Job No. 1903
Drawn: JPA
Checked: JBS
Date: 8-8-2019
Revised:

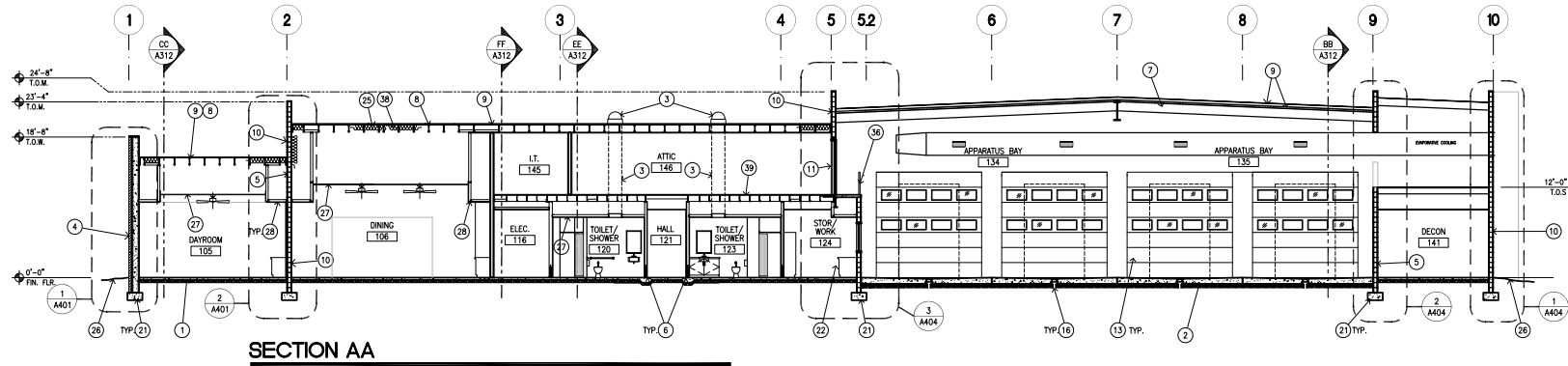
DESIGN REVIEW

HDA ARCHITECTS, L.L.C.
459 N. Gilbert Road, Suite C-300, GILBERT, AZ 85224
TEL: (480) 539 8800 FAX: (480) 539 8608

BUILDING ELEVATIONS

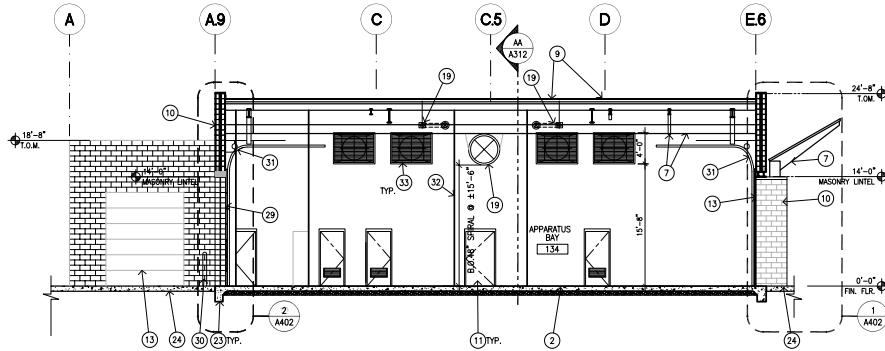


Sheet No.
A301



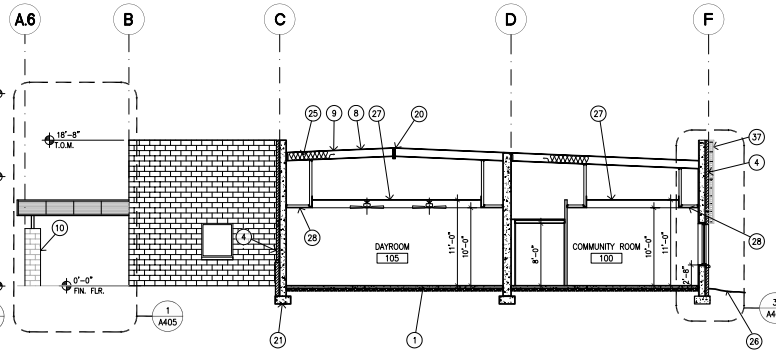
SECTION AA

SCALE: 1/8" = 1'-0"



SECTION BB

SCALE: 1/8" = 1'-0"

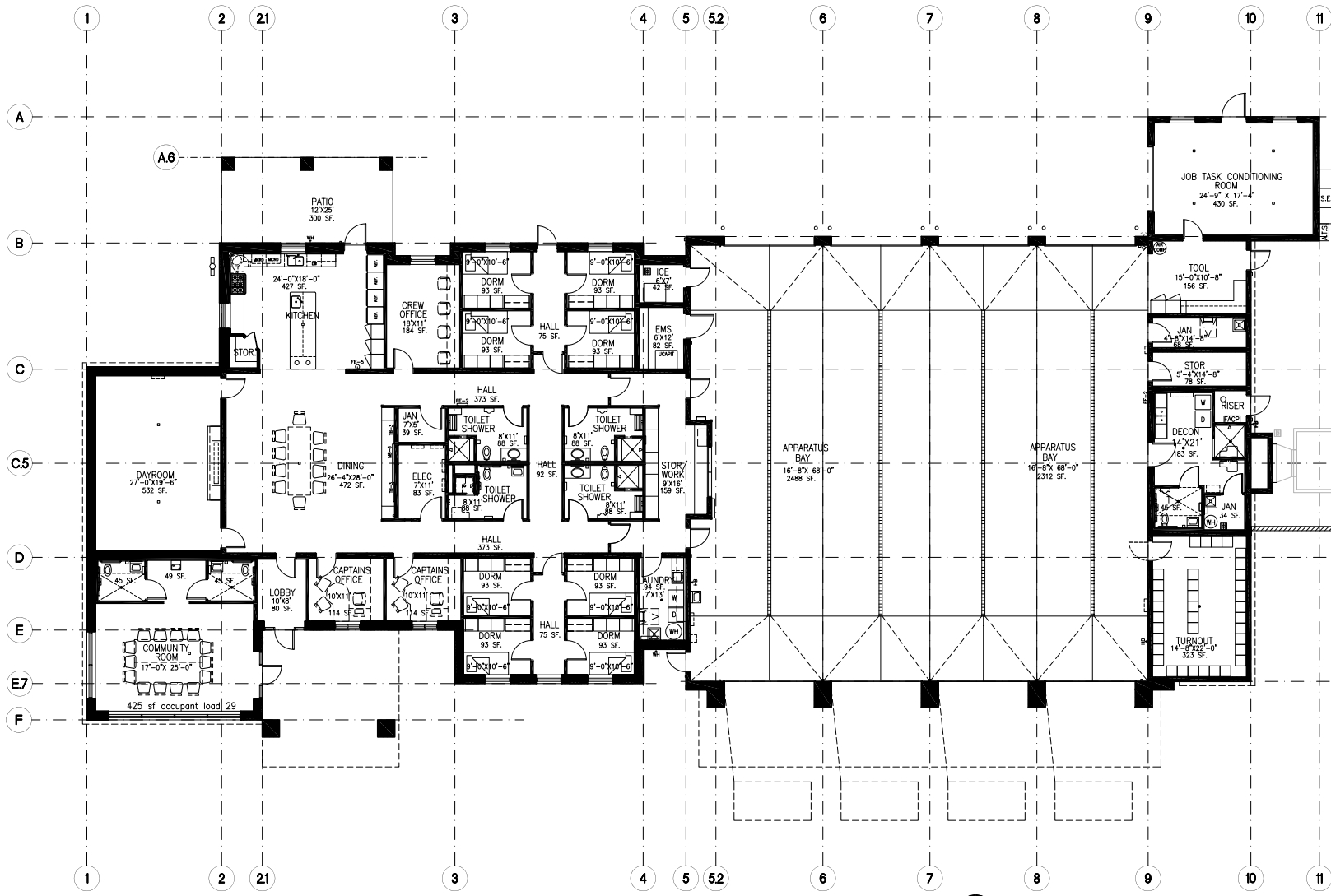




Job No. 1903
 Drawn: RPA
 Checked: BRS
 Date: 8-8-2018
 Revised:

DESIGN REVIEW

HDA ARCHITECTS, L.L.C.
 459 N. Gilbert Road, Suite C-300, GILBERT, AZ 85294
 TEL: (480) 539 8500 FAX: (480) 539 8608
FLOOR PLAN



OCCUPANCY LOAD CALCULATION					
ROOM NO.	ROOM NAME	OCCUPANCY	AREA	LOAD	LOAD
100	COMMUNITY ROOM	A-3	420 SF	15	6300
101	LOBBY	B	70 SF	150	10500
102	TOILET	B	85 SF	150	12750
103	ALCOVE	B	50 SF	150	7500
104	TOILET	B	40 SF	150	6000
105	DAYROOM	B-2	531 SF	200	106200
106	DORM	B-2	471 SF	200	94200
107	DORM	B-2	497 SF	200	99400
108	CAPTAINS OFFICE	B	114 SF	150	17100
109	CAPTAINS OFFICE	B	114 SF	150	17100
110	DORM	B-2	55 SF	50	2750
111	DORM	B-2	55 SF	50	2750
112	DORM	B-2	55 SF	50	2750
113	DORM	B-2	55 SF	50	2750
114	DORM	B-2	55 SF	50	2750
115	LABORATORY	B	50 SF	200	10000
116	HALLWAY	B	179 SF	150	26850
117	HALLWAY	B	40 SF	150	6000
118	ELECTRICAL RM	B	50 SF	150	7500
119	TOILET SHOWER	B	50 SF	150	7500
120	TOILET SHOWER	B	50 SF	150	7500
121	HALLWAY	B	50 SF	150	7500
122	TOILET SHOWER	B	50 SF	150	7500
123	STORAGE ROOM	B	100 SF	150	15000
124	HALLWAY	B	779 SF	150	116850
125	CHIEF OFFICE	B	100 SF	150	15000
126	DORM	B-2	55 SF	50	2750
127	DORM	B-2	55 SF	50	2750
128	DORM	B-2	55 SF	50	2750
129	HALL	B	75 SF	150	11250
130	DORM	B-2	55 SF	50	2750
131	DORM	B-2	55 SF	50	2750
132	DORM	B-2	55 SF	50	2750
133	DORM	B-2	55 SF	50	2750
134	APPARATUS BAY	B-2	2486 SF	200	497200
135	APPARATUS BAY	B-2	2312 SF	200	462400
136	APPARATUS BAY	B-2	2486 SF	200	497200
137	APPARATUS BAY	B-2	2312 SF	200	462400
138	APPARATUS BAY	B-2	2486 SF	200	497200
139	APPARATUS BAY	B-2	2312 SF	200	462400
140	APPARATUS BAY	B-2	2486 SF	200	497200
141	APPARATUS BAY	B-2	2312 SF	200	462400
142	APPARATUS BAY	B-2	2486 SF	200	497200
143	APPARATUS BAY	B-2	2312 SF	200	462400
144	APPARATUS BAY	B-2	2486 SF	200	497200
145	APPARATUS BAY	B-2	2312 SF	200	462400
146	APPARATUS BAY	B-2	2486 SF	200	497200
147	APPARATUS BAY	B-2	2312 SF	200	462400
148	APPARATUS BAY	B-2	2486 SF	200	497200
149	APPARATUS BAY	B-2	2312 SF	200	462400
150	APPARATUS BAY	B-2	2486 SF	200	497200
151	APPARATUS BAY	B-2	2312 SF	200	462400
152	APPARATUS BAY	B-2	2486 SF	200	497200
153	APPARATUS BAY	B-2	2312 SF	200	462400
154	APPARATUS BAY	B-2	2486 SF	200	497200
155	APPARATUS BAY	B-2	2312 SF	200	462400
156	APPARATUS BAY	B-2	2486 SF	200	497200
157	APPARATUS BAY	B-2	2312 SF	200	462400
158	APPARATUS BAY	B-2	2486 SF	200	497200
159	APPARATUS BAY	B-2	2312 SF	200	462400
160	APPARATUS BAY	B-2	2486 SF	200	497200
161	APPARATUS BAY	B-2	2312 SF	200	462400
162	APPARATUS BAY	B-2	2486 SF	200	497200
163	APPARATUS BAY	B-2	2312 SF	200	462400
164	APPARATUS BAY	B-2	2486 SF	200	497200
165	APPARATUS BAY	B-2	2312 SF	200	462400
166	APPARATUS BAY	B-2	2486 SF	200	497200
167	APPARATUS BAY	B-2	2312 SF	200	462400
168	APPARATUS BAY	B-2	2486 SF	200	497200
169	APPARATUS BAY	B-2	2312 SF	200	462400
170	APPARATUS BAY	B-2	2486 SF	200	497200
171	APPARATUS BAY	B-2	2312 SF	200	462400
172	APPARATUS BAY	B-2	2486 SF	200	497200
173	APPARATUS BAY	B-2	2312 SF	200	462400
174	APPARATUS BAY	B-2	2486 SF	200	497200
175	APPARATUS BAY	B-2	2312 SF	200	462400
176	APPARATUS BAY	B-2	2486 SF	200	497200
177	APPARATUS BAY	B-2	2312 SF	200	462400
178	APPARATUS BAY	B-2	2486 SF	200	497200
179	APPARATUS BAY	B-2	2312 SF	200	462400
180	APPARATUS BAY	B-2	2486 SF	200	497200
181	APPARATUS BAY	B-2	2312 SF	200	462400
182	APPARATUS BAY	B-2	2486 SF	200	497200
183	APPARATUS BAY	B-2	2312 SF	200	462400
184	APPARATUS BAY	B-2	2486 SF	200	497200
185	APPARATUS BAY	B-2	2312 SF	200	462400
186	APPARATUS BAY	B-2	2486 SF	200	497200
187	APPARATUS BAY	B-2	2312 SF	200	462400
188	APPARATUS BAY	B-2	2486 SF	200	497200
189	APPARATUS BAY	B-2	2312 SF	200	462400
190	APPARATUS BAY	B-2	2486 SF	200	497200
191	APPARATUS BAY	B-2	2312 SF	200	462400
192	APPARATUS BAY	B-2	2486 SF	200	497200
193	APPARATUS BAY	B-2	2312 SF	200	462400
194	APPARATUS BAY	B-2	2486 SF	200	497200
195	APPARATUS BAY	B-2	2312 SF	200	462400
196	APPARATUS BAY	B-2	2486 SF	200	497200
197	APPARATUS BAY	B-2	2312 SF	200	462400
198	APPARATUS BAY	B-2	2486 SF	200	497200
199	APPARATUS BAY	B-2	2312 SF	200	462400
200	APPARATUS BAY	B-2	2486 SF	200	497200
201	APPARATUS BAY	B-2	2312 SF	200	462400
202	APPARATUS BAY	B-2	2486 SF	200	497200
203	APPARATUS BAY	B-2	2312 SF	200	462400
204	APPARATUS BAY	B-2	2486 SF	200	497200
205	APPARATUS BAY	B-2	2312 SF	200	462400
206	APPARATUS BAY	B-2	2486 SF	200	497200
207	APPARATUS BAY	B-2	2312 SF	200	462400
208	APPARATUS BAY	B-2	2486 SF	200	497200
209	APPARATUS BAY	B-2	2312 SF	200	462400
210	APPARATUS BAY	B-2	2486 SF	200	497200
211	APPARATUS BAY	B-2	2312 SF	200	462400
212	APPARATUS BAY	B-2	2486 SF	200	497200
213	APPARATUS BAY	B-2	2312 SF	200	462400
214	APPARATUS BAY	B-2	2486 SF	200	497200
215	APPARATUS BAY	B-2	2312 SF	200	462400
216	APPARATUS BAY	B-2	2486 SF	200	497200
217	APPARATUS BAY	B-2	2312 SF	200	462400
218	APPARATUS BAY	B-2	2486 SF	200	497200
219	APPARATUS BAY	B-2	2312 SF	200	462400
220	APPARATUS BAY	B-2	2486 SF	200	497200
221	APPARATUS BAY	B-2	2312 SF	200	462400
222	APPARATUS BAY	B-2	2486 SF	200	497200
223	APPARATUS BAY	B-2	2312 SF	200	462400
224	APPARATUS BAY	B-2	2486 SF	200	497200
225	APPARATUS BAY	B-2	2312 SF	200	462400
226	APPARATUS BAY	B-2	2486 SF	200	497200
227	APPARATUS BAY	B-2	2312 SF	200	462400
228	APPARATUS BAY	B-2	2486 SF	200	497200
229	APPARATUS BAY	B-2	2312 SF	200	462400
230	APPARATUS BAY	B-2	2486 SF	200	497200
231	APPARATUS BAY	B-2	2312 SF	200	462400
232	APPARATUS BAY	B-2	2486 SF	200	497200
233	APPARATUS BAY	B-2	2312 SF	200	462400
234	APPARATUS BAY	B-2	2486 SF	200	497200
235	APPARATUS BAY	B-2	2312 SF	200	462400
236	APPARATUS BAY	B-2	2486 SF	200	497200
237	APPARATUS BAY	B-2	2312 SF	200	462400
238	APPARATUS BAY	B-2	2486 SF	200	497200
239	APPARATUS BAY	B-2	2312 SF	200	462400
240	APPARATUS BAY	B-2	2486 SF	200	497200
241	APPARATUS BAY	B-2	2312 SF	200	462400
242	APPARATUS BAY	B-2	2486 SF	200	497200
243	APPARATUS BAY	B-2	2312 SF	200	462400
244	APPARATUS BAY	B-2	2486 SF	200	497200
245	APPARATUS BAY	B-2	2312 SF	200	462400
246	APPARATUS BAY	B-2	2486 SF	200	497200
247	APPARATUS BAY	B-2	2312 SF	200	462400
248	APPARATUS BAY	B-2	2486 SF	200	497200
249	APPARATUS BAY	B-2	2312 SF	200	462400
250	APPARATUS BAY	B-2	2486 SF	200	497200
251	APPARATUS BAY	B-2	2312 SF	200	462400
252	APPARATUS BAY	B-2	2486 SF	200	497200
253	APPARATUS BAY	B-2	2312 SF	200	462400
254	APPARATUS BAY	B-2	2486 SF	200	497200
255	APPARATUS BAY	B-2	2312 SF	200	462400
256	APPARATUS BAY	B-2	2486 SF	200	497200
257	APPARATUS BAY	B-2	2312 SF	200	462400
258	APPARATUS BAY	B-2	2486 SF	200	497200
259	APPARATUS BAY	B-2	2312 SF	200	462400
260	APPARATUS BAY	B-2	2486 SF	200	497200
261	APPARATUS BAY	B-2	2312 SF	200	462400
262	APPARATUS BAY	B-2	2486 SF	200	497200
263	APPARATUS BAY	B-2	2312 SF	200	462400
264	APPARATUS BAY	B-2	2486 SF	200	497200
265	APPARATUS BAY	B-2	2312 SF	200	462400
266	APPARATUS BAY	B-2	2486 SF	200	497200
267	APPARATUS BAY	B-2	2312 SF	200	462400
268	APPARATUS BAY	B-2	2486 SF	200	497200
269	APPARATUS BAY	B-2	2312 SF	200	462400
270	APPARATUS BAY	B-2	2486 SF	200	497200
271	APPARATUS BAY	B-2	2312 SF	200	462400
272	APPARATUS BAY	B-2	2486 SF	200	497200
273	APPARATUS BAY	B-2	2312 SF	200	462400
274	APPARATUS BAY	B-2	2486 SF	200	497200
275	APPARATUS BAY	B-2	2312 SF	200	462400
276	APPARATUS BAY	B-2	2486 SF	200	497200
277	APPARATUS BAY	B-2	2312 SF	200	462400
278	APPARATUS BAY	B-2	2486 SF	200	497200
279	APPARATUS BAY	B-2	2312 SF	200	462400
280	APPARATUS BAY	B-2	2486 SF	200	497200
281	APPARATUS BAY	B-2	2312 SF	200	462400
282	APPARATUS BAY	B-2	2486 SF	200	497200
283	APPARATUS BAY	B-2	2312 SF	200	462400
284	APPARATUS BAY	B-2	2486 SF	200	497200
285	APPARATUS BAY	B-2	2312 SF	200	462400
286	APPARATUS BAY	B-2	2486 SF	200	497200
287	APPARATUS BAY	B-2	2312 SF	200	462400
288	APPARATUS BAY	B-2	2486 SF	200	497200
289	APPARATUS BAY	B-2	2312 SF	200	462400
290	APPARATUS BAY	B-2	2486 SF	200	497200
291	APPARATUS BAY	B-2	2312 SF	200	462400
292	APPARATUS BAY	B-2	2486 SF	200	497200
293	APPARATUS BAY	B-2	2312 SF	200	462400
294	APPARATUS BAY	B-2	2486 SF	200	497200
295	APPARATUS BAY	B-2	2312 SF	200	462400
296	APPARATUS BAY	B-2	2486 SF	200	497200
297	APPARATUS BAY	B-2	2312 SF	200	462400
298	APPARATUS BAY	B-2	2486 SF	200	497200
299	APPARATUS BAY	B-2	2312 SF	200	462400
300	APPARATUS BAY	B-2	2486 SF	200	497200
301					



LOOKING NORTHWEST



LOOKING NORTHEAST



CITY OF MESA
MESA FIRE STATION 221
 6880 E. POINT TWENTY-TWO BLVD.
 MESA, AZ

REGISTERED ARCHITECT
 BRUCE R. SCOTT
 STATE OF ARIZONA
 LICENSE NO. 27022
 Expires 06/30/20

Job No.	1903
Drawn	RFA
Checked	BRS
Date	8-8-2019
Revised	

DESIGN REVIEW

HDA ARCHITECTS, LLC.
 459 N. Gilbert Road, Suite C-300, Gilbert, AZ 85234
 TEL: (480) 559 8800 FAX: (480) 559 8685
RENDERINGS

HDA
 HDA ARCHITECTS, LLC.

Sheet No.
A321

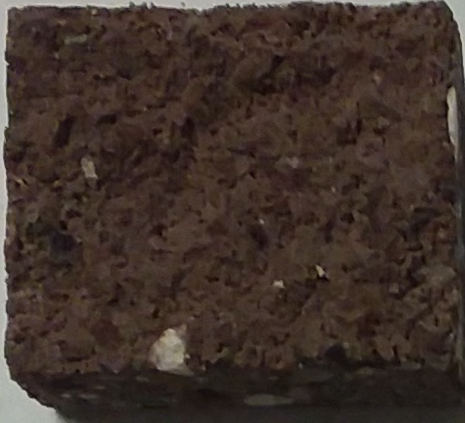
Plot Date: 11-11-19 08:32am Drawing scale: 1:1 By: dcm
 Drawing file: C:\1\803\1903_HISTORICAL\08 11-04-19\1903_A321-088
 Last Saved: 11-11-19 08:28am



'Trendstone', Ground Face, (Field)



Trim Paint



'Superlite', Split Face, (Accent)
Integral color C.M.U. Color: Plum



'Superlite', Smooth Face, (Accent)
Integral color C.M.U. Color: UMBER BROWN



Kalwall Aluminum and Window Finish
Anodized Finish

EXTERIOR FINISHES

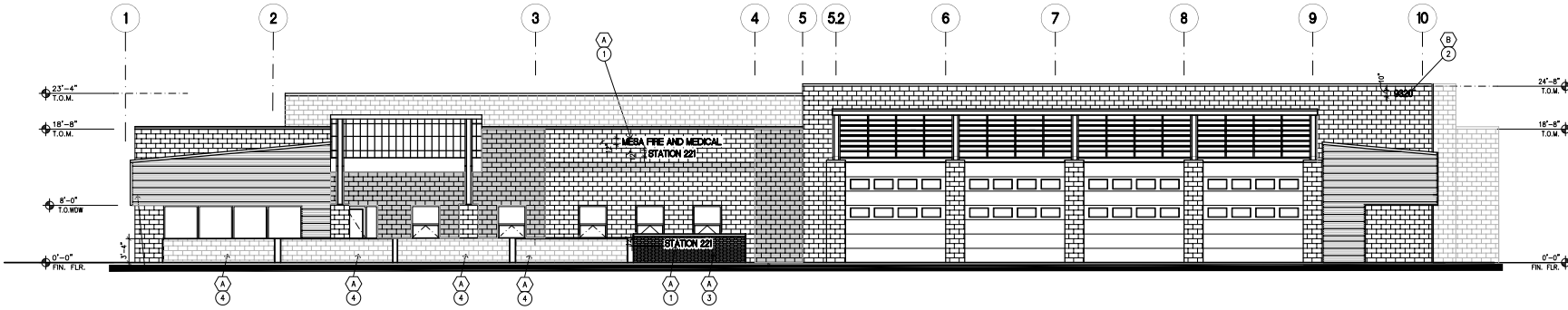
City of Mesa

MESA FIRE STATION 221

9320 E. Point Twenty Two Blvd.
Mesa, Arizona

Project No. 1903
Nov. 1, 2019

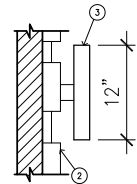




1 SIGNAGE - SOUTH ELEVATION

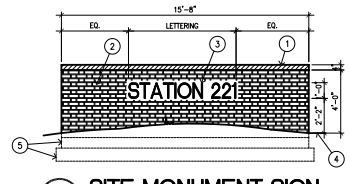


SCALE: 1/8" = 1'-0"



3 SIGNAGE DETAIL

N.T.S.



2 SITE MONUMENT SIGN

SCALE: 1/4" = 1'-0"

- SIGNAGE AREA: 6.1 SQ. FT.
1. 8"x16" SPLIT FACE CMU SOLID CAP - "PLUM"
 2. CMU VENEER TO MATCH BUILDING.
 3. MIN. 12" HIGH CAST METAL LETTERS - BRUSHED ALUMINUM FINISH.
 4. FINISHED GRADE, VERIFY IN FIELD PRIOR TO CONSTRUCTION.
 5. FOOTING AND STEM.

NOTES

- NOT ALL NOTES APPLY TO THIS SHEET.
1. 12" CAST METAL LETTERS 2" DEEP.
 2. 10" METAL ADDRESS NUMBERS.
 3. CMU VENEER PARKING SCREEN WALL TO MATCH BUILDING.
 4. 8" X 8" X 16" INTEGRAL COLOR SPLIT FACE CMU. PARKING SCREEN WALL, STAGGERED.



CITY OF MESA
MESA FIRE STATION 221
 9920 E. POINT TWENTY-TWO BLVD.
 MESA, AZ



Job No.	1903
Drawn	BRS
Checked	BRS
Date	3-5-2019
Revised	

DESIGN REVIEW

HDA ARCHITECTS, LLC.
 469 N. Gilbert Road, Suite C-200, GILBERT, AZ 85234
 TEL: (480) 589 8800 FAX: (480) 589 8608



Sheet No.

A311

CONTEXT SITE PHOTOS OF MESA FIRE STATION 221



LOOKING SOUTHEAST TOWARD HIGH SCHOOL



LOOKING SOUTH



LOOKING WEST



LOOKING NORTHWEST



LOOKING NORTH



LOOKING WEST TOWARD ELLSWORTH



CITY OF MESA
MESA FIRE STATION 221
 9930 E. POINT TWENTY-TWO BLVD.
 MESA, AZ



Job No. 1903
 Drawn BRS
 Checked BRS
 Date 3-8-2019
 Revised

DESIGN REVIEW

HDA ARCHITECTS, LLC.
 469 N. Gilbert Road, Suite C-200, GILBERT, AZ 85234
 TEL: (480) 589 8800 FAX: (480) 589 9608
CONTEXT PHOTOS



Sheet No.
A101



D-Series Size 0 LED Area Luminaire



Catalog Number
Notes
Type

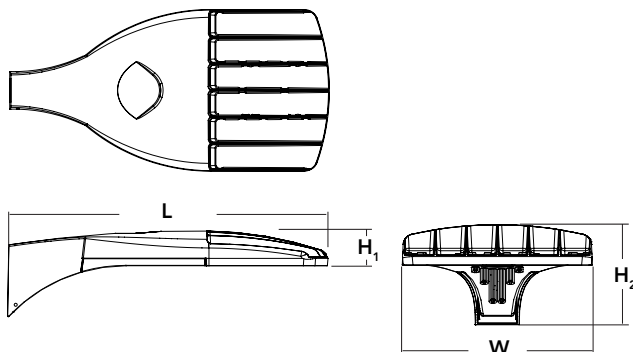
Hit the Tab key or mouse over the page to see all interactive elements.

Introduction

The modern styling of the D-Series is striking yet unobtrusive - making a bold, progressive statement even as it blends seamlessly with its environment. The D-Series distills the benefits of the latest in LED technology into a high performance, high efficacy, long-life luminaire. The outstanding photometric performance results in sites with excellent uniformity, greater pole spacing and lower power density. It is ideal for replacing up to 400W metal halide with typical energy savings of 70% and expected service life of over 100,000 hours.

Specifications

EPA:	0.95 ft ² (.09 m ²)
Length:	26" (66.0 cm)
Width:	13" (33.0 cm)
Height ₁ :	3" (7.62 cm)
Height ₂ :	7" (17.8 cm)
Weight (max):	16 lbs (7.25 kg)



A+ Capable options indicated by this color background.

Ordering Information

EXAMPLE: DSX0 LED P6 40K T3M MVOLT SPA NLTAIR2 PIRHN DDBXD

Series	LEDs	Color temperature	Distribution	Voltage	Mounting
DSX0 LED	Forward optics P1 P4 P7 P2 P5 P3 P6 Rotated optics P10 ¹ P12 ¹ P11 ¹ P13 ¹	30K 3000 K 40K 4000 K 50K 5000 K	T1S Type I short T5S Type V short T2S Type II short T5M Type V medium T2M Type II medium T5W Type V wide T3S Type III short BLC Backlight control ² T3M Type III medium LCCO Left corner cutoff ² T4M Type IV medium RCCO Right corner cutoff ² TFTM Forward throw medium T5VS Type V very short	MVOLT ^{3,4} 120 ⁴ 208 ⁴ 240 ⁴ 277 ⁴ 347 ^{4,5} 480 ^{4,5}	Shipped included SPA Square pole mounting RPA Round pole mounting WBA Wall bracket SPUMBA Square pole universal mounting adaptor ⁶ RPUMBA Round pole universal mounting adaptor ⁶ Shipped separately KMA8 DDBXD U Mast arm mounting bracket adaptor (specify finish) ⁷

Control options	Other options	Finish (required)
Shipped installed NLTAIR2 nLight AIR generation 2 enabled ^{8,9} PIRHN Network, high/low motion/ambient sensor ¹⁰ PER NEMA twist-lock receptacle only (control ordered separate) ¹¹ PER5 Five-pin receptacle only (control ordered separate) ^{11,12} PER7 Seven-pin receptacle only (leads exit fixture) (control ordered separate) ^{11,12} DMG 0-10V dimming extend out back of housing for external control (control ordered separate)	PIR High/low, motion/ambient sensor, 8-15' mounting height, ambient sensor enabled at 5fc ^{13,14} PIRH High/low, motion/ambient sensor, 15-30' mounting height, ambient sensor enabled at 5fc ^{13,14} PIR1FC3V High/low, motion/ambient sensor, 8-15' mounting height, ambient sensor enabled at 1fc ^{13,14} PIRH1FC3V High/low, motion/ambient sensor, 15-30' mounting height, ambient sensor enabled at 1fc ^{13,14} FAO Field adjustable output ¹⁵	Shipped installed HS House-side shield ¹⁶ SF Single fuse (120, 277, 347V) ⁴ DF Double fuse (208, 240, 480V) ⁴ L90 Left rotated optics ¹ R90 Right rotated optics ¹ DDL Diffused drop lens ¹⁶ Shipped separately BS Bird spikes ¹⁷ EGS External glare shield ¹⁷
		DDBXD Dark bronze DBLXD Black DNAXD Natural aluminum DWHXD White DDBTXD Textured dark bronze DBLBXD Textured black DNATXD Textured natural aluminum DWHGXD Textured white



Ordering Information

Accessories

Ordered and shipped separately.

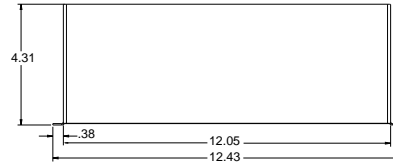
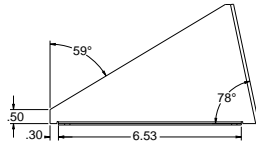
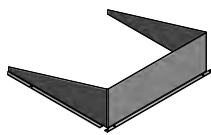
DLL127F 1.5 JU	Photocell - SSL twist-lock (120-277V) ¹⁸
DLL347F 1.5 CUL JU	Photocell - SSL twist-lock (347V) ¹⁸
DLL480F 1.5 CUL JU	Photocell - SSL twist-lock (480V) ¹⁸
DSHORT SBK U	Shorting cap ¹⁸
DSXOHS 20C U	House-side shield for P1,P2,P3 and P4 ¹⁶
DSXOHS 30C U	House-side shield for P10,P11,P12 and P13 ¹⁶
DSXOHS 40C U	House-side shield for P5,P6 AND P7 ¹⁶
DSXODDL U	Diffused drop lens (polycarbonate) ¹⁶
PUMBA DDBXD U*	Square and round pole universal mounting bracket adaptor (specify finish) ¹⁹
KMA8 DDBXD U	Mast arm mounting bracket adaptor (specify finish) ¹⁹

For more control options, visit [DTL](#) and [ROAM](#) online. Link to [nLight Air 2](#)

NOTES

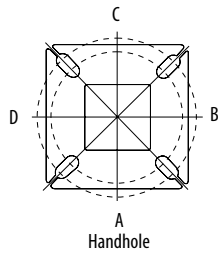
- P10, P11, P12 and P13 and rotated options (L90 or R90) only available together.
- Not available with HS or DDL.
- MVOLT driver operates on any line voltage from 120-277V (50/60 Hz).
- Single fuse (SF) requires 120V, 277V or 347V. Double fuse (DF) requires 208V, 240V or 480V.
- Not available in P4, P7 or P13. Not available with BL30, BL50 or PNMT options.
- Universal mounting brackets intended for retrofit on existing pre-drilled poles only. 1.5 G vibration load rating per ANCI C136.31.
- Must order fixture with SPA mounting. Must be ordered as a separate accessory; see Accessories information. For use with 2-3/8" mast arm (not included).
- Must be ordered with PIR-IN.
- Sensor cover available only in dark bronze, black, white and natural aluminum colors.
- Must be ordered with NLTAIR2. For more information on nLight Air 2, visit [this link](#).
- Photocell ordered and shipped as a separate line item from Acuity Brands Controls. See accessories. Shorting Cap included.
- If ROAM[®] node required, it must be ordered and shipped as a separate line item from Acuity Brands Controls. Shorting Cap included.
- Reference Motion Sensor table on page 3.
- Reference PER Table on page 3 to see functionality.
- Not available with other dimming controls options.
- Not available with BLC, LCCO and RCCO distribution.
- Must be ordered with fixture for factory pre-drilling.
- Requires luminaire to be specified with PER, PER5 or PER7 option. See PER Table on page 3.
- For retrofit use only.

EGS – External Glare Shield

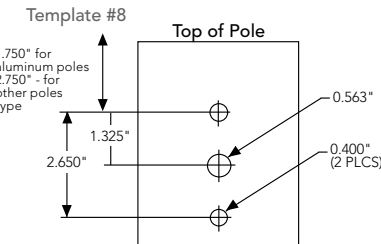


Drilling

HANDHOLE ORIENTATION (from top of pole)



A Handhole



Tenon Mounting Slipfitter

Tenon O.D.	Single Unit	2 at 180°	2 at 90°	3 at 120°	3 at 90°	4 at 90°
2-3/8"	AST20-190	AST20-280	AST20-290	AST20-320	AST20-390	AST20-490
2-7/8"	AST25-190	AST25-280	AST25-290	AST25-320	AST25-390	AST25-490
4"	AST35-190	AST35-280	AST35-290	AST35-320	AST35-390	AST35-490

Mounting Option	Drilling Template	Single	2 @ 180	2 @ 90	3 @ 90	3 @ 120	4 @ 90
Head Location		Side B	Side B & D	Side B & C	Side B, C & D	Round Pole Only	Side A, B, C & D
Drill Nomenclature	#8	DM19AS	DM28AS	DM29AS	DM39AS	DM32AS	DM49AS
Minimum Acceptable Outside Pole Dimension							
SPA	#8	2-7/8"	2-7/8"	3.5"	3.5"		3.5"
RPA	#8	2-7/8"	2-7/8"	3.5"	3.5"	3"	3.5"
SPUMBA	#5	2-7/8"	3"	4"	4"		4"
RPUMBA	#5	2-7/8"	3.5"	5"	5"	3.5"	5"



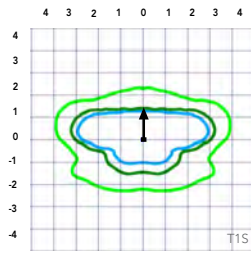
Photometric Diagrams

To see complete photometric reports or download .ies files for this product, visit Lithonia Lighting's [D-Series Area Size 0 homepage](#).

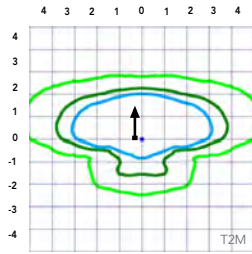
Isofootcandle plots for the DSX0 LED 40C 1000 40K. Distances are in units of mounting height (20').

LEGEND

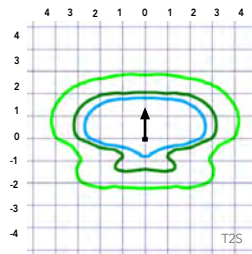
- 0.1 fc
- 0.5 fc
- 1.0 fc



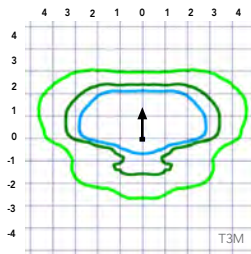
Test No.



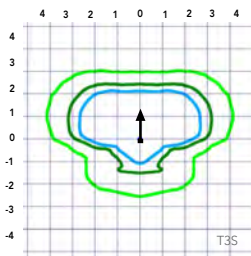
Test No.



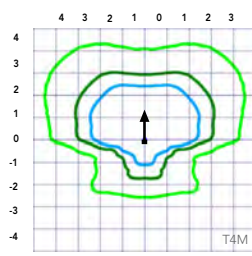
Test No. LT123457P25 tested in accordance with IESNA LM-79-08.



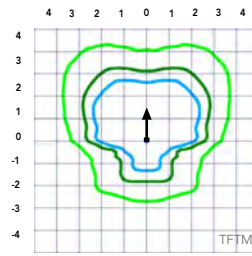
Test No. LT123457P25 tested in accordance with IESNA LM-79-08.



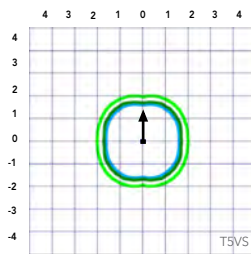
Test No. LT123457P25 tested in accordance with IESNA LM-79-08.



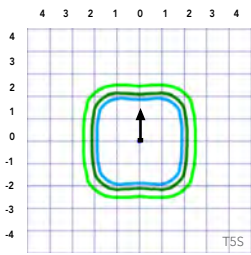
Test No.



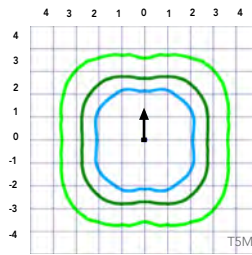
Test No.



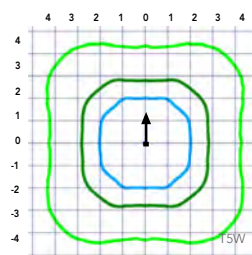
Test No.



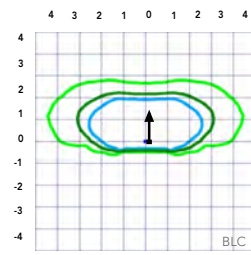
Test No.



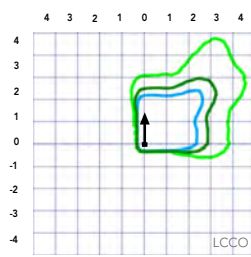
Test No.



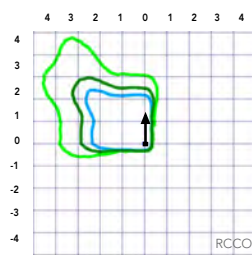
Test No. LT123457P25 tested in accordance with IESNA LM-79-08.



Test No.



Test No.



Test No.

Performance Data

Lumen Ambient Temperature (LAT) Multipliers

Use these factors to determine relative lumen output for average ambient temperatures from 0-40°C (32-104°F).

Ambient		Lumen Multiplier
0°C	32°F	1.04
5°C	41°F	1.04
10°C	50°F	1.03
15°C	59°F	1.02
20°C	68°F	1.01
25°C	77°C	1.00
30°C	86°F	0.99
35°C	95°F	0.98
40°C	104°F	0.97

Projected LED Lumen Maintenance

Data references the extrapolated performance projections for the platforms noted in a **25°C ambient**, based on 10,000 hours of LED testing (tested per IESNA LM-80-08 and projected per IESNA TM-21-11).

To calculate LLF, use the lumen maintenance factor that corresponds to the desired number of operating hours below. For other lumen maintenance values, contact factory.

Operating Hours	Lumen Maintenance Factor
25,000	0.96
50,000	0.92
100,000	0.85

Motion Sensor Default Settings						
Option	Dimmed State	High Level (when triggered)	Photocell Operation	Dwell Time	Ramp-up Time	Ramp-down Time
PIR or PIRH	3V (37%) Output	10V (100%) Output	Enabled @ 5FC	5 min	3 sec	5 min
*PIR1FC3V or PIRH1FC3V	3V (37%) Output	10V (100%) Output	Enabled @ 1FC	5 min	3 sec	5 min

*for use with separate Dusk to Dawn or timer.

Controls Options

Nomenclature	Description	Functionality	Primary control device	Notes
FAO	Field adjustable output device installed inside the luminaire; wired to the driver dimming leads.	Allows the luminaire to be manually dimmed, effectively trimming the light output.	FAO device	Cannot be used with other controls options that need the 0-10V leads
DS	Drivers wired independently for 50/50 luminaire operation	The luminaire is wired to two separate circuits, allowing for 50/50 operation.	Independently wired drivers	Requires two separately switched circuits. Consider nLight AIR as a more cost effective alternative.
PERS or PER7	Twist-lock photocell receptacle	Compatible with standard twist-lock photocells for dusk to dawn operation, or advanced control nodes that provide 0-10V dimming signals.	Twist-lock photocells such as DLL Elite or advanced control nodes such as ROAM.	Pins 4 & 5 to dimming leads on driver, Pins 6 & 7 are capped inside luminaire
PIR or PIRH	Motion sensors with integral photocell. PIR for 8-15' mounting; PIRH for 15-30' mounting	Luminaires dim when no occupancy is detected.	Acuity Controls SBOR	Also available with PIRH1FC3V when the sensor photocell is used for dusk-to-dawn operation.
NLTAIR2 PIRHN	nLight AIR enabled luminaire for motion sensing, photocell and wireless communication.	Motion and ambient light sensing with group response. Scheduled dimming with motion sensor over-ride when wirelessly connected to the nLight Eclipse.	nLight Air rSDGR	nLight AIR sensors can be programmed and commissioned from the ground using the ClAIRity Pro app.

Electrical Load

Performance Package	LED Count	Drive Current	Wattage	Current (A)						
				120	208	240	277	347	480	
Forward Optics (Non-Rotated)	P1	20	530	38	0.32	0.18	0.15	0.15	0.10	0.08
	P2	20	700	49	0.41	0.23	0.20	0.19	0.14	0.11
	P3	20	1050	71	0.60	0.37	0.32	0.27	0.21	0.15
	P4	20	1400	92	0.77	0.45	0.39	0.35	0.28	0.20
	P5	40	700	89	0.74	0.43	0.38	0.34	0.26	0.20
	P6	40	1050	134	1.13	0.65	0.55	0.48	0.39	0.29
	P7	40	1300	166	1.38	0.80	0.69	0.60	0.50	0.37
Rotated Optics (Requires L90 or R90)	P10	30	530	53	0.45	0.26	0.23	0.21	0.16	0.12
	P11	30	700	72	0.60	0.35	0.30	0.27	0.20	0.16
	P12	30	1050	104	0.88	0.50	0.44	0.39	0.31	0.23
	P13	30	1300	128	1.08	0.62	0.54	0.48	0.37	0.27

Performance Data

Lumen Output

Lumen values are from photometric tests performed in accordance with IESNA LM-79-08. Data is considered to be representative of the configurations shown, within the tolerances allowed by Lighting Facts. Contact factory for performance data on any configurations not shown here.

Forward Optics																							
Power Package	LED Count	Drive Current	System Watts	Dist. Type	30K (3000 K, 70 CRI)					40K (4000 K, 70 CRI)					50K (5000 K, 70 CRI)								
					Lumens	B	U	G	LPW	Lumens	B	U	G	LPW	Lumens	B	U	G	LPW				
P1	20	530	38W	T1S	4,369	1	0	1	115	4,706	1	0	1	124	4,766	1	0	1	125				
				T2S	4,364	1	0	1	115	4,701	1	0	1	124	4,761	1	0	1	125				
				T2M	4,387	1	0	1	115	4,726	1	0	1	124	4,785	1	0	1	126				
				T3S	4,248	1	0	1	112	4,577	1	0	1	120	4,634	1	0	1	122				
				T3M	4,376	1	0	1	115	4,714	1	0	1	124	4,774	1	0	1	126				
				T4M	4,281	1	0	1	113	4,612	1	0	2	121	4,670	1	0	2	123				
				TFTM	4,373	1	0	1	115	4,711	1	0	2	124	4,771	1	0	2	126				
				T5VS	4,548	2	0	0	120	4,900	2	0	0	129	4,962	2	0	0	131				
				T5S	4,552	2	0	0	120	4,904	2	0	0	129	4,966	2	0	0	131				
				T5M	4,541	3	0	1	120	4,891	3	0	1	129	4,953	3	0	1	130				
				T5W	4,576	3	0	2	120	4,929	3	0	2	130	4,992	3	0	2	131				
				BLC	3,586	1	0	1	94	3,863	1	0	1	102	3,912	1	0	1	103				
				LCCO	2,668	1	0	1	70	2,874	1	0	2	76	2,911	1	0	2	77				
				RCCO	2,668	1	0	1	70	2,874	1	0	2	76	2,911	1	0	2	77				
				P2	20	700	49W	T1S	5,570	1	0	1	114	6,001	1	0	1	122	6,077	2	0	2	124
								T2S	5,564	1	0	2	114	5,994	1	0	2	122	6,070	2	0	2	124
T2M	5,593	1	0					1	114	6,025	1	0	1	123	6,102	1	0	1	125				
T3S	5,417	1	0					2	111	5,835	1	0	2	119	5,909	2	0	2	121				
T3M	5,580	1	0					2	114	6,011	1	0	2	123	6,087	1	0	2	124				
T4M	5,458	1	0					2	111	5,880	1	0	2	120	5,955	1	0	2	122				
TFTM	5,576	1	0					2	114	6,007	1	0	2	123	6,083	1	0	2	124				
T5VS	5,799	2	0					0	118	6,247	2	0	0	127	6,327	2	0	0	129				
T5S	5,804	2	0					0	118	6,252	2	0	0	128	6,332	2	0	1	129				
T5M	5,789	3	0					1	118	6,237	3	0	1	127	6,316	3	0	1	129				
T5W	5,834	3	0					2	119	6,285	3	0	2	128	6,364	3	0	2	130				
BLC	4,572	1	0					1	93	4,925	1	0	1	101	4,987	1	0	1	102				
LCCO	3,402	1	0					2	69	3,665	1	0	2	75	3,711	1	0	2	76				
RCCO	3,402	1	0					2	69	3,665	1	0	2	75	3,711	1	0	2	76				
P3	20	1050	71W					T1S	7,833	2	0	2	110	8,438	2	0	2	119	8,545	2	0	2	120
								T2S	7,825	2	0	2	110	8,429	2	0	2	119	8,536	2	0	2	120
				T2M	7,865	2	0	2	111	8,473	2	0	2	119	8,580	2	0	2	121				
				T3S	7,617	2	0	2	107	8,205	2	0	2	116	8,309	2	0	2	117				
				T3M	7,846	2	0	2	111	8,452	2	0	2	119	8,559	2	0	2	121				
				T4M	7,675	2	0	2	108	8,269	2	0	2	116	8,373	2	0	2	118				
				TFTM	7,841	2	0	2	110	8,447	2	0	2	119	8,554	2	0	2	120				
				T5VS	8,155	3	0	0	115	8,785	3	0	0	124	8,896	3	0	0	125				
				T5S	8,162	3	0	1	115	8,792	3	0	1	124	8,904	3	0	1	125				
				T5M	8,141	3	0	2	115	8,770	3	0	2	124	8,881	3	0	2	125				
				T5W	8,204	3	0	2	116	8,838	4	0	2	124	8,950	4	0	2	126				
				BLC	6,429	1	0	2	91	6,926	1	0	2	98	7,013	1	0	2	99				
				LCCO	4,784	1	0	2	67	5,153	1	0	2	73	5,218	1	0	2	73				
				RCCO	4,784	1	0	2	67	5,153	1	0	2	73	5,218	1	0	2	73				
				P4	20	1400	92W	T1S	9,791	2	0	2	106	10,547	2	0	2	115	10,681	2	0	2	116
								T2S	9,780	2	0	2	106	10,536	2	0	2	115	10,669	2	0	2	116
T2M	9,831	2	0					2	107	10,590	2	0	2	115	10,724	2	0	2	117				
T3S	9,521	2	0					2	103	10,256	2	0	2	111	10,386	2	0	2	113				
T3M	9,807	2	0					2	107	10,565	2	0	2	115	10,698	2	0	2	116				
T4M	9,594	2	0					2	104	10,335	2	0	3	112	10,466	2	0	3	114				
TFTM	9,801	2	0					2	107	10,558	2	0	2	115	10,692	2	0	2	116				
T5VS	10,193	3	0					1	111	10,981	3	0	1	119	11,120	3	0	1	121				
T5S	10,201	3	0					1	111	10,990	3	0	1	119	11,129	3	0	1	121				
T5M	10,176	4	0					2	111	10,962	4	0	2	119	11,101	4	0	2	121				
T5W	10,254	4	0					3	111	11,047	4	0	3	120	11,186	4	0	3	122				
BLC	8,036	1	0					2	87	8,656	1	0	2	94	8,766	1	0	2	95				
LCCO	5,979	1	0					2	65	6,441	1	0	2	70	6,523	1	0	3	71				
	5,979	1	0					2	65	6,441	1	0	2	70	6,523	1	0	3	71				

Performance Data

Lumen Output

Lumen values are from photometric tests performed in accordance with IESNA LM-79-08. Data is considered to be representative of the configurations shown, within the tolerances allowed by Lighting Facts. Contact factory for performance data on any configurations not shown here.

Forward Optics																			
Power Package	LED Count	Drive Current	System Watts	Dist. Type	30K (3000 K, 70 CRI)					40K (4000 K, 70 CRI)					50K (5000 K, 70 CRI)				
					Lumens	B	U	G	LPW	Lumens	B	U	G	LPW	Lumens	B	U	G	LPW
P5	40	700	89W	T1S	10,831	2	0	2	122	11,668	2	0	2	131	11,816	2	0	2	133
				T2S	10,820	2	0	2	122	11,656	2	0	2	131	11,803	2	0	2	133
				T2M	10,876	2	0	2	122	11,716	2	0	2	132	11,864	2	0	2	133
				T3S	10,532	2	0	2	118	11,346	2	0	2	127	11,490	2	0	2	129
				T3M	10,849	2	0	2	122	11,687	2	0	2	131	11,835	2	0	2	133
				T4M	10,613	2	0	3	119	11,434	2	0	3	128	11,578	2	0	3	130
				TFTM	10,842	2	0	2	122	11,680	2	0	2	131	11,828	2	0	2	133
				TSVS	11,276	3	0	1	127	12,148	3	0	1	136	12,302	3	0	1	138
				T5S	11,286	3	0	1	127	12,158	3	0	1	137	12,312	3	0	1	138
				T5M	11,257	4	0	2	126	12,127	4	0	2	136	12,280	4	0	2	138
				T5W	11,344	4	0	3	127	12,221	4	0	3	137	12,375	4	0	3	139
				BLC	8,890	1	0	2	100	9,576	1	0	2	108	9,698	1	0	2	109
				LCCO	6,615	1	0	3	74	7,126	1	0	3	80	7,216	1	0	3	81
				RCCO	6,615	1	0	3	74	7,126	1	0	3	80	7,216	1	0	3	81
P6	40	1050	134W	T1S	14,805	3	0	3	110	15,949	3	0	3	119	16,151	3	0	3	121
				T2S	14,789	3	0	3	110	15,932	3	0	3	119	16,134	3	0	3	120
				T2M	14,865	3	0	3	111	16,014	3	0	3	120	16,217	3	0	3	121
				T3S	14,396	3	0	3	107	15,509	3	0	3	116	15,705	3	0	3	117
				T3M	14,829	2	0	3	111	15,975	3	0	3	119	16,177	3	0	3	121
				T4M	14,507	2	0	3	108	15,628	3	0	3	117	15,826	3	0	3	118
				TFTM	14,820	2	0	3	111	15,965	3	0	3	119	16,167	3	0	3	121
				TSVS	15,413	4	0	1	115	16,604	4	0	1	124	16,815	4	0	1	125
				T5S	15,426	3	0	1	115	16,618	4	0	1	124	16,828	4	0	1	126
				T5M	15,387	4	0	2	115	16,576	4	0	2	124	16,786	4	0	2	125
				T5W	15,506	4	0	3	116	16,704	4	0	3	125	16,915	4	0	3	126
				BLC	12,151	1	0	2	91	13,090	1	0	2	98	13,255	1	0	2	99
				LCCO	9,041	1	0	3	67	9,740	1	0	3	73	9,863	1	0	3	74
				RCCO	9,041	1	0	3	67	9,740	1	0	3	73	9,863	1	0	3	74
P7	40	1300	166W	T1S	17,023	3	0	3	103	18,338	3	0	3	110	18,570	3	0	3	112
				T2S	17,005	3	0	3	102	18,319	3	0	3	110	18,551	3	0	3	112
				T2M	17,092	3	0	3	103	18,413	3	0	3	111	18,646	3	0	3	112
				T3S	16,553	3	0	3	100	17,832	3	0	3	107	18,058	3	0	3	109
				T3M	17,051	3	0	3	103	18,369	3	0	3	111	18,601	3	0	3	112
				T4M	16,681	3	0	3	100	17,969	3	0	3	108	18,197	3	0	3	110
				TFTM	17,040	3	0	3	103	18,357	3	0	4	111	18,590	3	0	4	112
				TSVS	17,723	4	0	1	107	19,092	4	0	1	115	19,334	4	0	1	116
				T5S	17,737	4	0	2	107	19,108	4	0	2	115	19,349	4	0	2	117
				T5M	17,692	4	0	2	107	19,059	4	0	2	115	19,301	4	0	2	116
				T5W	17,829	5	0	3	107	19,207	5	0	3	116	19,450	5	0	3	117
				BLC	13,971	2	0	2	84	15,051	2	0	2	91	15,241	2	0	2	92
				LCCO	10,396	1	0	3	63	11,199	1	0	3	67	11,341	1	0	3	68
					10,396	1	0	3	63	11,199	1	0	3	67	11,341	1	0	3	68

Performance Data

Lumen Output

Lumen values are from photometric tests performed in accordance with IESNA LM-79-08. Data is considered to be representative of the configurations shown, within the tolerances allowed by Lighting Facts. Contact factory for performance data on any configurations not shown here.

Rotated Optics																							
Power Package	LED Count	Drive Current	System Watts	Dist. Type	30K (3000 K, 70 CRI)					40K (4000 K, 70 CRI)					50K (5000 K, 70 CRI)								
					Lumens	B	U	G	LPW	Lumens	B	U	G	LPW	Lumens	B	U	G	LPW				
P10	30	530	53W	T1S	6,727	2	0	2	127	7,247	3	0	3	137	7,339	3	0	3	138				
				T2S	6,689	3	0	3	126	7,205	3	0	3	136	7,297	3	0	3	138				
				T2M	6,809	3	0	3	128	7,336	3	0	3	138	7,428	3	0	3	140				
				T3S	6,585	3	0	3	124	7,094	3	0	3	134	7,183	3	0	3	136				
				T3M	6,805	3	0	3	128	7,331	3	0	3	138	7,424	3	0	3	140				
				T4M	6,677	3	0	3	126	7,193	3	0	3	136	7,284	3	0	3	137				
				TFTM	6,850	3	0	3	129	7,379	3	0	3	139	7,472	3	0	3	141				
				T5VS	6,898	3	0	0	130	7,431	3	0	0	140	7,525	3	0	0	142				
				T5S	6,840	2	0	1	129	7,368	2	0	1	139	7,461	2	0	1	141				
				T5M	6,838	3	0	1	129	7,366	3	0	2	139	7,460	3	0	2	141				
				T5W	6,777	3	0	2	128	7,300	3	0	2	138	7,393	3	0	2	139				
				BLC	5,626	2	0	2	106	6,060	2	0	2	114	6,137	2	0	2	116				
				LCCO	4,018	1	0	2	76	4,328	1	0	2	82	4,383	1	0	2	83				
				RCCO	4,013	3	0	3	76	4,323	3	0	3	82	4,377	3	0	3	83				
				P11	30	700	72W	T1S	8,594	3	0	3	119	9,258	3	0	3	129	9,376	3	0	3	130
T2S	8,545	3	0					3	119	9,205	3	0	3	128	9,322	3	0	3	129				
T2M	8,699	3	0					3	121	9,371	3	0	3	130	9,490	3	0	3	132				
T3S	8,412	3	0					3	117	9,062	3	0	3	126	9,177	3	0	3	127				
T3M	8,694	3	0					3	121	9,366	3	0	3	130	9,484	3	0	3	132				
T4M	8,530	3	0					3	118	9,189	3	0	3	128	9,305	3	0	3	129				
TFTM	8,750	3	0					3	122	9,427	3	0	3	131	9,546	3	0	3	133				
T5VS	8,812	3	0					0	122	9,493	3	0	0	132	9,613	3	0	0	134				
T5S	8,738	3	0					1	121	9,413	3	0	1	131	9,532	3	0	1	132				
T5M	8,736	3	0					2	121	9,411	3	0	2	131	9,530	3	0	2	132				
T5W	8,657	4	0					2	120	9,326	4	0	2	130	9,444	4	0	2	131				
BLC	7,187	3	0					3	100	7,742	3	0	3	108	7,840	3	0	3	109				
LCCO	5,133	1	0					2	71	5,529	1	0	2	77	5,599	1	0	2	78				
RCCO	5,126	3	0					3	71	5,522	3	0	3	77	5,592	3	0	3	78				
P12	30	1050	104W					T1S	12,149	3	0	3	117	13,088	3	0	3	126	13,253	3	0	3	127
				T2S	12,079	4	0	4	116	13,012	4	0	4	125	13,177	4	0	4	127				
				T2M	12,297	3	0	3	118	13,247	3	0	3	127	13,415	3	0	3	129				
				T3S	11,891	4	0	4	114	12,810	4	0	4	123	12,972	4	0	4	125				
				T3M	12,290	3	0	3	118	13,239	4	0	4	127	13,407	4	0	4	129				
				T4M	12,058	4	0	4	116	12,990	4	0	4	125	13,154	4	0	4	126				
				TFTM	12,369	4	0	4	119	13,325	4	0	4	128	13,494	4	0	4	130				
				T5VS	12,456	3	0	1	120	13,419	3	0	1	129	13,589	4	0	1	131				
				T5S	12,351	3	0	1	119	13,306	3	0	1	128	13,474	3	0	1	130				
				T5M	12,349	4	0	2	119	13,303	4	0	2	128	13,471	4	0	2	130				
				T5W	12,238	4	0	3	118	13,183	4	0	3	127	13,350	4	0	3	128				
				BLC	10,159	3	0	3	98	10,944	3	0	3	105	11,083	3	0	3	107				
				LCCO	7,256	1	0	3	70	7,816	1	0	3	75	7,915	1	0	3	76				
				RCCO	7,246	3	0	3	70	7,806	4	0	4	75	7,905	4	0	4	76				
				P13	30	1300	128W	T1S	14,438	3	0	3	113	15,554	3	0	3	122	15,751	3	0	3	123
T2S	14,355	4	0					4	112	15,465	4	0	4	121	15,660	4	0	4	122				
T2M	14,614	3	0					3	114	15,744	4	0	4	123	15,943	4	0	4	125				
T3S	14,132	4	0					4	110	15,224	4	0	4	119	15,417	4	0	4	120				
T3M	14,606	4	0					4	114	15,735	4	0	4	123	15,934	4	0	4	124				
T4M	14,330	4	0					4	112	15,438	4	0	4	121	15,633	4	0	4	122				
TFTM	14,701	4	0					4	115	15,836	4	0	4	124	16,037	4	0	4	125				
T5VS	14,804	4	0					1	116	15,948	4	0	1	125	16,150	4	0	1	126				
T5S	14,679	3	0					1	115	15,814	3	0	1	124	16,014	3	0	1	125				
T5M	14,676	4	0					2	115	15,810	4	0	2	124	16,010	4	0	2	125				
T5W	14,544	4	0					3	114	15,668	4	0	3	122	15,866	4	0	3	124				
BLC	7,919	3	0					3	62	8,531	3	0	3	67	8,639	3	0	3	67				
LCCO	5,145	1	0					2	40	5,543	1	0	2	43	5,613	1	0	2	44				
									5,139	3	0	3	40	5,536	3	0	3	43	5,606	3	0	3	44



A+ Capable Luminaire

This item is an A+ capable luminaire, which has been designed and tested to provide consistent color appearance and system-level interoperability.

- All configurations of this luminaire meet the Acuity Brands' specification for chromatic consistency
- This luminaire is A+ Certified when ordered with DTL® controls marked by a [shaded background](#). DTL DLL equipped luminaires meet the A+ specification for luminaire to photocontrol interoperability¹
- This luminaire is part of an A+ Certified solution for ROAM® or XPoint™ Wireless control networks, providing out-of-the-box control compatibility with simple commissioning, when ordered with drivers and control options marked by a [shaded background](#)¹

To learn more about A+, visit www.acuitybrands.com/aplus.

1. See ordering tree for details.
2. A+ Certified Solutions for ROAM require the order of one ROAM node per luminaire.
Sold Separately: [Link to Roam](#); [Link to DTL DLL](#)

FEATURES & SPECIFICATIONS

INTENDED USE

The sleek design of the D-Series Size 0 reflects the embedded high performance LED technology. It is ideal for many commercial and municipal applications, such as parking lots, plazas, campuses, and pedestrian areas.

CONSTRUCTION

Single-piece die-cast aluminum housing has integral heat sink fins to optimize thermal management through conductive and convective cooling. Modular design allows for ease of maintenance and future light engine upgrades. The LED driver is mounted in direct contact with the casting to promote low operating temperature and long life. Housing is completely sealed against moisture and environmental contaminants (IP65). Low EPA (0.95 ft²) for optimized pole wind loading.

FINISH

Exterior parts are protected by a zinc-infused Super Durable TGIC thermoset powder coat finish that provides superior resistance to corrosion and weathering. A tightly controlled multi-stage process ensures a minimum 3 mils thickness for a finish that can withstand extreme climate changes without cracking or peeling. Available in both textured and non-textured finishes.

OPTICS

Precision-molded proprietary acrylic lenses are engineered for superior area lighting distribution, uniformity, and pole spacing. Light engines are available in 3000 K, 4000 K or 5000 K (70 CRI) configurations. The D-Series Size 0 has zero uplight and qualifies as a Nighttime Friendly™ product, meaning it is consistent with the LEED® and Green Globes™ criteria for eliminating wasteful uplight.

ELECTRICAL

Light engine(s) configurations consist of high-efficacy LEDs mounted to metal-core circuit boards to maximize heat dissipation and promote long life (up to L85/100,000 hours at 25°C). Class 1 electronic drivers are designed to have a power factor >90%, THD <20%, and an expected life of 100,000 hours with <1% failure rate. Easily serviceable 10kV surge protection device meets a minimum Category C Low operation (per ANSI/IEEE C62.41.2).

STANDARD CONTROLS

The DSX0 LED area luminaire has a number of control options. Dusk to dawn controls can be utilized via optional NEMA twist-lock photocell receptacles. Integrated motion sensors with on-board photocells feature field-adjustable programming and are suitable for mounting heights up to 30 feet.

nLIGHT AIR CONTROLS

The DSX0 LED area luminaire is also available with nLight® AIR for the ultimate in wireless control. This powerful controls platform provides out-of-the-box basic motion sensing and photocontrol functionality and is suitable for mounting heights up to 40 feet. Once commissioned using a smartphone and the easy-to-use CLAIRITY app, nLight AIR equipped luminaires can be grouped, resulting in motion sensor and photocell group response without the need for additional equipment. Scheduled dimming with motion sensor over-ride can be achieved when used with the nLight Eclipse. Additional information about nLight Air can be found [here](#).

INSTALLATION

Included mounting block and integral arm facilitate quick and easy installation. Stainless steel bolts fasten the mounting block securely to poles and walls, enabling the D-Series Size 0 to withstand up to a 3.0 G vibration load rating per ANSI C136.31. The D-Series Size 0 utilizes the AERIS™ series pole drilling pattern (template #8). Optional terminal block and NEMA photocontrol receptacle are also available.

LISTINGS

UL Listed for wet locations. Light engines are IP66 rated; luminaire is IP65 rated. Rated for -40°C minimum ambient. U.S. Patent No. D672,492 S. International patent pending.

DesignLights Consortium® (DLC) Premium qualified product and DLC qualified product. Not all versions of this product may be DLC Premium qualified or DLC qualified. Please check the DLC Qualified Products List at www.designlights.org/QPL to confirm which versions are qualified.

International Dark-Sky Association (IDA) Fixture Seal of Approval (FSA) is available for all products on this page utilizing 3000K color temperature only.

WARRANTY

5-year limited warranty. Complete warranty terms located at: www.acuitybrands.com/resources/terms-and-conditions

Note: Actual performance may differ as a result of end-user environment and application.

All values are design or typical values, measured under laboratory conditions at 25 °C.

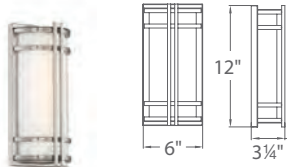
Specifications subject to change without notice.



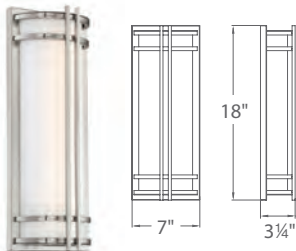
SKYSCRAPER – model: WS-W686

MODERN FORMS

LED Exterior Sconce



WS-W68612



WS-W68618



WS-W68627

Fixture Type:

Catalog Number:

Project: _____

Location: _____

PRODUCT DESCRIPTION

Elevate your space. A classic architectural design thoughtfully engineered for robustness to withstand commercial use for interiors or exteriors. A UV stabilized acrylic diffuser and marine grade stainless steel structure complete this specification-grade wall mount luminaire. Available in either bronze or stainless steel finish.

FEATURES

- Mount vertically or horizontally
- ADA compliant, low profile design
- ETL & cETL wet location listed, IP65 rated
- CEC Title 24 Compliant
- F1 rated acrylic
- SS - 316 marine grade, stainless steel construction
BZ - Aluminum construction
- Full range dimming when used with compatible dimmers*
- No transformer or driver required
- 277V option available (special order)
- 80,000 hour rated life
- Color Temp: 3000K (2700K / 3500K available special order)
- CRI: 90

SPECIFICATIONS



Construction: 316 marine grade Stainless steel/ Aluminum, F1 rated acrylic

Light Source: High output LED.

Finish: Bronze (BZ), Stainless Steel (SS)

Standards: ETL & cETL wet location listed IP 65. ADA compliant. CEC Title 24.

ORDER NUMBER

Model	Height	Wattage	Voltage	LED Lumens	Delivered Lumens	Finish
WS-W68612	12"	12W		605	418	BZ Bronze  SS Stainless Steel 
WS-W68618	18"	19W	120V	1098	741	
WS-W68627	27"	24W		1272	880	

Example: **WS-W68612-BZ**

For 277V special order, add an "F" before the finish: **WS-W68612F-BZ**

For 2700K add "-27"; 3500K add "-35" before the finish: **WS-W68618-35-SS**

modernforms.com
Phone (800) 526.2588
Fax (800) 526.2585

Headquarters/Eastern Distribution Center
44 Harbor Park Drive
Port Washington, NY 11050

Central Distribution Center
1600 Distribution Ct
Lithia Springs, GA 30122

Western Distribution Center
1750 Archibald Avenue
Ontario, CA 91760

WAC Lighting retains the right to modify the design of our products at any time as part of the company's continuous improvement program. AUG 2018



WST LED

Architectural Wall Sconce



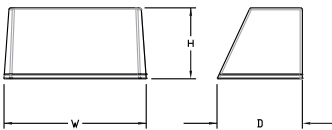
Catalog Number
Notes
Type

Hit the Tab key or mouse over the page to see all interactive elements.

Specifications

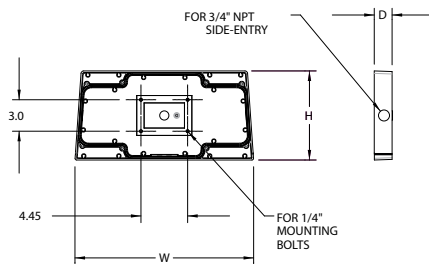
Luminaire

- Height:** 8-1/2"
(21.59 cm)
- Width:** 17"
(43.18 cm)
- Depth:** 10-3/16"
(25.9 cm)
- Weight:** 20 lbs
(9.1 kg)



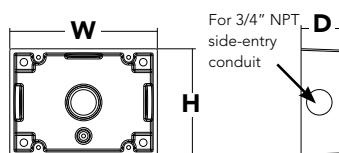
Optional Back Box (PBBW)

- Height:** 8.49"
(21.56 cm)
- Width:** 17.01"
(43.21 cm)
- Depth:** 1.70"
(4.32 cm)



Optional Back Box (BBW)

- Height:** 4"
(10.2 cm)
- Width:** 5-1/2"
(14.0 cm)
- Depth:** 1-1/2"
(3.8 cm)



A+ Capable Luminaire

This item is an A+ capable luminaire, which has been designed and tested to provide consistent color appearance and system-level interoperability.

- All configurations of this luminaire meet the Acuity Brands' specification for chromatic consistency
- This luminaire is A+ Certified when ordered with DTL® controls marked by a **shaded background**. DTL DLL equipped luminaires meet the A+ specification for luminaire to photocontrol interoperability¹
- This luminaire is part of an A+ Certified solution for ROAM® or XPoint™ Wireless control networks, providing out-of-the-box control compatibility with simple commissioning, when ordered with drivers and control options marked by a **shaded background**¹

To learn more about A+, visit www.acuitybrands.com/aplus.

See ordering tree for details.


A+ Certified Solutions for ROAM require the order of one ROAM node per luminaire. Sold Separately: [Link to Roam](#); [Link to DTL DLL](#)



COMMERCIAL OUTDOOR

One Lithonia Way • Conyers, Georgia 30012 • Phone: 800-705-SERV (7378) • www.lithonia.com
© 2011-2019 Acuity Brands Lighting, Inc. All rights reserved.

WST-LED
Rev. 07/31/19

 A+ Capable options indicated by this color background.

Ordering Information

EXAMPLE: WST LED P1 40K VF MVOLT DDBTXD

WST LED						
Series	Performance Package	Color temperature	Distribution	Voltage		Mounting
WST LED	P1 1,500 Lumen package P2 3,000 Lumen package P3 6,000 Lumen package	27K 2700 K 30K 3000 K 40K 4000 K 50K 5000 K	VF Visual comfort forward throw VW Visual comfort wide	MVOLT ¹ 277 ² 120 ² 347 ² 208 ² 480 ² 240 ²		Shipped included (blank) Surface mounting bracket Shipped separately BBW Surface-mounted back box ³ PBBW Premium surface-mounted back box ^{3,4}

Options		Finish (required)
NLTAIR2 PIR	nLIGHT AIR Wireless enabled motion/ambient sensor for 8'-15' mounting heights ^{5,6}	DDBXD Dark bronze
NLTAIR2 PIRH	nLIGHT AIR Wireless enabled motion/ambient sensor for 15'-30' mounting heights ^{5,6}	DBLXD Black
PE	Photoelectric cell, button type ⁷	DNAXD Natural aluminum
PER	NEMA twist-lock receptacle only (controls ordered separate) ⁸	DWHXD White
PER5	Five-wire receptacle only (controls ordered separate) ⁸	DSSXD Sandstone
PER7	Seven-wire receptacle only (controls ordered separate) ⁸	DDBTXD Textured dark bronze
PIR	Motion/Ambient Light Sensor, 8'-15' mounting height ^{5,6}	DBLXD Textured black
PIR1FC3V	Motion/ambient sensor, 8'-15' mounting height, ambient sensor enabled at 1fc ^{5,6}	DNATXD Textured natural aluminum
PIRH	180° motion/ambient light sensor, 15'-30' mounting height ^{5,6}	DWHGXD Textured white
PIRH1FC3V	Motion/ambient sensor, 15'-30' mounting height, ambient sensor enabled at 1fc ^{5,6}	DSSTXD Textured sandstone
SF	Single fuse (120, 277, 347V) ²	
DF	Double fuse (208, 240, 480V) ²	
DS	Dual switching ⁹	
E7WH	Emergency battery backup, Non CEC compliant (7W) ¹⁰	
E7WC	Emergency battery backup, CA Title 20 Noncompliant (cold, 7W) ^{10,11}	
E7WHR	Remote emergency battery backup, CA Title 20 Noncompliant (remote 7W) ^{10,12}	
E20WH	Emergency battery pack 18W constant power, Certified in CA Title 20 MAEDBS ¹⁰	
E20WC	Emergency battery pack -20°C 18W constant power, Certified in CA Title 20 MAEDBS ^{10,11}	
E23WHR	Remote emergency battery backup, CA Title 20 Noncompliant (remote 20W) ^{10,11,13}	
LCE	Left side conduit entry ¹⁴	
RCE	Right side conduit entry ¹⁴	
Shipped separately		
RBPW	Retrofit back plate ³	
VG	Vandal guard ¹⁵	
WG	Wire guard ¹⁵	

Accessories

Ordered and shipped separately.

WSTVCPBBW DDBXD U	Premium Surface - mounted back box
WSBBW DDBTXD U	Surface - mounted back box
RBPW DDBXD U	Retrofit back plate

NOTES

- MVOLT driver operates on any line voltage from 120-277V (50/60 Hz).
- Single fuse (SF) requires 120V, 277V or 347V. Double fuse (DF) requires 208V, 240V or 480V.
- Also available as a separate accessory; see accessories information.
- Top conduit entry standard.
- Not available with VG or WG. See PER Table.
- Reference Motion Sensor table.
- Need to specify 120, 208, 240 or 277 voltage.

- Photocell ordered and shipped as a separate line item from Acuity Brands Controls. Shorting Cap included.
- Not available with Emergency options, PE or PER options.
- Not available with 347/480V.
- Battery pack rated for -20° to 40°C.
- Comes with PBBW.
- Warranty period is 3-years.
- Not available with BBW.
- Must order with fixture; not an accessory.

Emergency Battery Operation

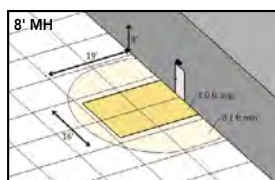
The emergency battery backup is integral to the luminaire — no external housing required! This design provides reliable emergency operation while maintaining the aesthetics of the product.

All emergency backup configurations include an independent secondary driver with an integral relay to immediately detect AC power loss, meeting interpretations of [NFPA 70/NEC 2008 - 700.16](#)

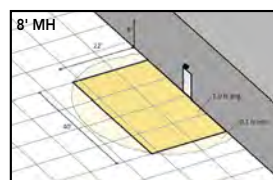
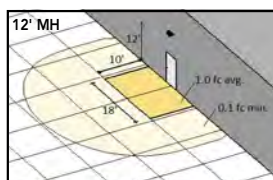
The emergency battery will power the luminaire for a minimum duration of 90 minutes (maximum duration of three hours) from the time supply power is lost, per [International Building Code Section 1006](#) and [NFPA 101 Life Safety Code Section 7.9](#), provided luminaires are mounted at an appropriate height and illuminate an open space with no major obstructions.

The examples below show illuminance of 1 fc average and 0.1 fc minimum of the P1 power package and VF distribution product in emergency mode.

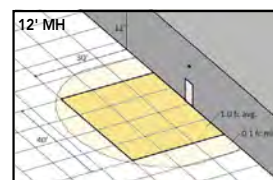
10' x 10' Gridlines
8' and 12' Mounting Height



WST LED P1 27K VF MVOLT E7WH



WST LED P2 40K VF MVOLT E20WH



COMMERCIAL OUTDOOR

One Lithonia Way • Conyers, Georgia 30012 • Phone: 800-705-SERV (7378) • www.lithonia.com
© 2011-2019 Acuity Brands Lighting, Inc. All rights reserved.

WST-LED
Rev. 07/31/19

Performance Data

Lumen Ambient Temperature (LAT) Multipliers

Use these factors to determine relative lumen output for average ambient temperatures from 0-40°C (32-104°F).

Ambient		Lumen Multiplier
0°C	32°F	1.03
10°C	50°F	1.02
20°C	68°F	1.01
25°C	77°F	1.00
30°C	86°F	0.99
40°C	104°F	0.98

Electrical Load

Performance package	System Watts	Current (A)					
		120	208	240	277	347	480
P1	11	0.1	0.06	0.05	0.04	---	---
	14	---	---	---	---	0.04	0.03
P1 DS	14	0.12	0.07	0.06	0.06	---	---
	P2	25	0.21	0.13	0.11	0.1	---
30		---	---	---	---	0.09	0.06
P2 DS	25	0.21	0.13	0.11	0.1	---	---
	P3	50	0.42	0.24	0.21	0.19	---
56		---	---	---	---	0.16	0.12
P3 DS	52	0.43	0.26	0.23	0.21	---	---

Projected LED Lumen Maintenance

Values calculated according to IESNA TM-21-11 methodology and valid up to 40°C.

Operating Hours	0	25,000	50,000	100,000
Lumen Maintenance Factor	1.0	>0.95	>0.92	>0.87

Motion Sensor Default Settings

Option	Dimmed State	High Level (when triggered)	Photocell Operation	Ramp-up Time	Dwell Time	Ramp-down Time
*PIR or PIRH	3V (37%) Output	10V (100%) Output	Enabled @ 5FC	3 sec	5 min	5 min
PIR1FC3V or PIRH1FC3V	3V (37%) Output	10V (100%) Output	Enabled @ 1FC	3 sec	5 min	5 min

*for use with site wide Dusk to Dawn control

PER Table

Control	PER (3 wire)	PER5 (5 wire)			PER7 (7 wire)		
			Wire 4/Wire5		Wire 4/Wire5	Wire 6/Wire7	
Photocontrol Only (On/Off)	✓	⚠	Wired to dimming leads on driver	⚠	Wired to dimming leads on driver	Wires Capped inside fixture	
ROAM	⊘	✓	Wired to dimming leads on driver	⚠	Wired to dimming leads on driver	Wires Capped inside fixture	
ROAM with Motion	⊘	⚠	Wired to dimming leads on driver	⚠	Wired to dimming leads on driver	Wires Capped inside fixture	
Futureproof*	⊘	⚠	Wired to dimming leads on driver	✓	Wired to dimming leads on driver	Wires Capped inside fixture	
Futureproof* with Motion	⊘	⚠	Wired to dimming leads on driver	✓	Wired to dimming leads on driver	Wires Capped inside fixture	

✓ Recommended

⊘ Will not work

⚠ Alternate

*Futureproof means: Ability to change controls in the future.

Lumen Output

Lumen values are from photometric tests performed in accordance with IESNA LM-79-08. Data is considered to be representative of the configurations shown, within the tolerances allowed by Lighting Facts.

Performance Package	System Watts (MVOLT ²)	Dist. Type	27K (2700K, 70 CRI)					30K (3000K, 70 CRI)					40K (4000K, 70 CRI)					50K (5000K, 70 CRI)				
			Lumens	B	U	G	LPW	Lumens	B	U	G	LPW	Lumens	B	U	G	LPW	Lumens	B	U	G	LPW
P1	12W	VF	1,494	0	0	0	125	1,529	0	0	0	127	1,639	0	0	0	137	1,639	0	0	0	137
		VW	1,513	0	0	0	126	1,548	0	0	0	129	1,659	0	0	0	138	1,660	0	0	0	138
P2	25W	VF	3,163	1	0	1	127	3,237	1	0	1	129	3,469	1	0	1	139	3,468	1	0	1	139
		VW	3,201	1	0	0	128	3,276	1	0	0	131	3,512	1	0	0	140	3,512	1	0	0	140
P3	50W	VF	6,025	1	0	1	121	6,165	1	0	1	123	6,609	1	0	1	132	6,607	1	0	1	132
		VW	6,098	1	0	1	122	6,240	1	0	1	125	6,689	1	0	1	134	6,691	1	0	1	134



COMMERCIAL OUTDOOR

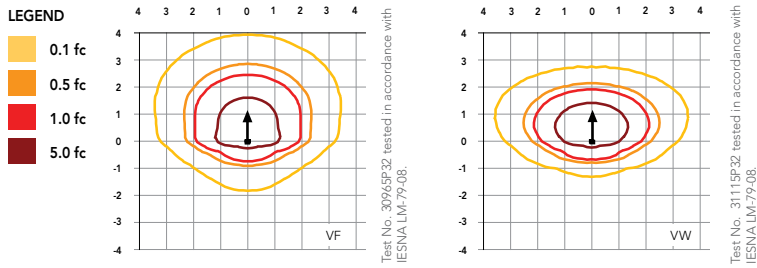
One Lithonia Way • Conyers, Georgia 30012 • Phone: 800-705-SERV (7378) • www.lithonia.com
© 2011-2019 Acuity Brands Lighting, Inc. All rights reserved.

WST-LED
Rev. 07/31/19

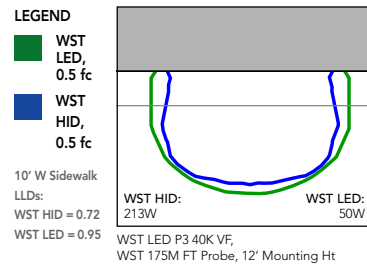
Photometric Diagrams

To see complete photometric reports or download .ies files for this product, visit Lithonia Lighting's [WST LED homepage](#).

Isofootcandle plots for the WST LED P3 40K VF and VW. Distances are in units of mounting height (10').



Distribution overlay comparison to 175W metal halide.



FEATURES & SPECIFICATIONS

INTENDED USE

The classic architectural shape of the WST LED was designed for applications such as hospitals, schools, malls, restaurants, and commercial buildings. The long life LEDs and driver make this luminaire nearly maintenance-free.

CONSTRUCTION

The single-piece die-cast aluminum housing integrates secondary heat sinks to optimize thermal transfer from the internal light engine heat sinks and promote long life. The driver is mounted in direct contact with the casting for a low operating temperature and long life. The die-cast door frame is fully gasketed with a one-piece solid silicone gasket to keep out moisture and dust, providing an IP65 rating for the luminaire.

FINISH

Exterior parts are protected by a zinc-infused Super Durable TGIC thermoset powder coat finish that provides superior resistance to corrosion and weathering. A tightly controlled multi-stage process ensures a minimum 3 mils thickness for a finish that can withstand extreme climate changes without cracking or peeling. Standard Super Durable colors include dark bronze, black, natural aluminum, sandstone and white. Available in textured and non-textured finishes.

OPTICS

Well crafted reflector optics allow the light engine to be recessed within the luminaire, providing visual comfort, superior distribution, uniformity, and spacing in wall-mount applications. The WST LED has zero uplight and qualifies as a Nighttime Friendly™ product, meaning it is consistent with the LEED® and Green Globes™ criteria for eliminating wasteful uplight.

ELECTRICAL

Light engine(s) consist of 98 high-efficacy LEDs mounted to a metal core circuit board and integral aluminum heat sinks to maximize heat dissipation and promote long life (100,000 hrs at 40°C, L87). Class 2 electronic driver has a power factor >90%, THD <20%. Easily-serviceable surge protection device meets a minimum Category B (per ANSI/IEEE C62.41.2).

INSTALLATION

A universal mounting plate with integral mounting support arms allows the fixture to hinge down for easy access while making wiring connections.

LISTINGS

CSA certified to U.S. and Canadian standards. Luminaire is IP65 rated. PIR and back box options are rated for wet location. Rated for -30°C to 40°C ambient.

DesignLights Consortium® (DLC) Premium qualified product. Not all versions of this product may be DLC Premium qualified. Please check the DLC Qualified Products List at www.designlights.org/QPL to confirm which versions are qualified.

WARRANTY

5-year limited warranty. Complete warranty terms located at: www.acuitybrands.com/resources/terms-and-conditions

Note: Actual performance may differ as a result of end-user environment and application. All values are design or typical values, measured under laboratory conditions at 25 °C. Specifications subject to change without notice.



COMMERCIAL OUTDOOR

One Lithonia Way • Conyers, Georgia 30012 • Phone: 800-705-SERV (7378) • www.lithonia.com
© 2011-2019 Acuity Brands Lighting, Inc. All rights reserved.

WST-LED
Rev. 07/31/19



FEATURES & SPECIFICATIONS

INTENDED USE — Typical applications include corridors, lobbies, conference rooms and private offices.

CONSTRUCTION — Galvanized steel mounting/plaster frame; galvanized steel junction box with bottom-hinged access covers and spring latches. Reflectors are retained by torsion springs.

Vertically adjustable mounting brackets with commercial bar hangers provide 3-3/4" total adjustment. Two combination 1/2"-3/4" and four 1/2" knockouts for straight-through conduit runs. Capacity: 8 (4 in, 4 out). No. 12 AWG conductors, rated for 90°C.

Accommodates 12"-24" joist spacing.

Passive cooling thermal management for 25°C standard; high ambient (40°C) option available. Light engine and drivers are accessible from above or below ceiling.

Max ceiling thickness 1-1/2".

OPTICS — LEDs are binned to a 3-step SDCM; 80 CRI minimum.

LED light source concealed with diffusing optical lens.

General illumination lighting with 1.0 S/MH and 55° cutoff to source and source image.

Self-flanged anodized reflectors in specular, semi-specular, or matte diffuse finishes. Also available in white and black painted reflectors.

ELECTRICAL — Multi-volt (120-277V, 50/60Hz) 0-10V dimming drivers mounted to junction box, 10% or 1% minimum dimming level available.

0-10V dimming fixture requires two (2) additional low-voltage wires to be pulled.

70% lumen maintenance at 50,000 hours.

LISTINGS — Certified to US and Canadian safety standards. Damp location standard (wet location, covered ceiling optional). ENERGY STAR® certified product.

WARRANTY — 5-year limited warranty. Complete warranty terms located at:

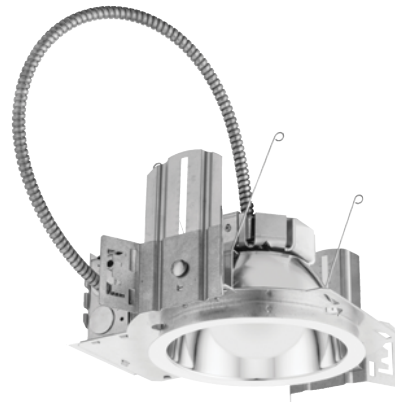
www.acuitybrands.com/CustomerResources/Terms_and_conditions.aspx

Note: Actual performance may differ as a result of end-user environment and application.

All values are design or typical values, measured under laboratory conditions at 25 °C.

Specifications subject to change without notice.

Catalog Number
Notes
Type



LDN6

**6" OPEN and WALLWASH LED
Non-IC
New Construction Downlight**



A+ Capable options indicated by this color background.

ORDERING INFORMATION

Lead times will vary depending on options selected. Consult with your sales representative.

Example: LDN6 35/15 L06AR LSS MVOLT EZ10

LDN6		Color temperature				Lumens ¹				Aperture/Trim Color			Finish		Voltage	
Series	Color temperature	Lumens ¹		Aperture/Trim Color		Finish		Voltage								
LDN6	6" round	27/ 2700K	05 500 lumens	25 2500 lumens	L06 Downlight	AR Clear	LSS Semi-specular	MVOLT Multi-volt								
		30/ 3000K	10 1000 lumens	30 3000 lumens	LW6 Wallwash	WR ² White	LD Matte diffuse	120 120V								
		35/ 3500K	15 1500 lumens	40 4000 lumens		BR ² Black	LS Specular	277 277V								
		40/ 4000K	20 2000 lumens	50 5000 lumens				347 ³ 347V								
		50/ 5000K														

Driver	Options		
GZ10 0-10V driver dims to 10%	SF ⁴ Single fuse	N80 ⁷ nLight™ Lumen Compensation	
GZ1 0-10V driver dims to 1%	TRW ⁵ White painted flange	NPS80EZ ⁶ nLight® dimming pack controls 0-10V eldoLED drivers (EZ10, EZ1).	
EZ10 0-10V eldoLED driver with smooth and flicker-free deep dimming performance down to 10%	TRBL ⁵ Black painted flange	NPS80EZER ⁶ nLight® dimming pack controls 0-10V eldoLED drivers (EZ10, EZ1). ER controls fixtures on emergency circuit.	
EZ1 0-10V eldoLED driver with smooth and flicker-free deep dimming performance down to 1%	EL Emergency battery pack with integral test switch. Not Certified in CA Title 20 MAEDBS	HAO ¹⁰ High ambient option	
	ELR Emergency battery pack with remote test switch. Not Certified in CA Title 20 MAEDBS	CP ¹¹ Chicago Plenum	
	ELSD Emergency battery pack with self-diagnostics, integral test switch. Not Certified in CA Title 20 MAEDBS	WL Wet Location, specify for exterior use applications	
	ELRSD Emergency battery pack with self-diagnostics, remote test switch. Not Certified in CA Title 20 MAEDBS	RRL RELOC®-ready luminaire connectors enable a simple and consistent factory installed option across all ABL luminaire brands. Refer to RRL for complete nomenclature. Available only in RRLA, RRLB, RRLAE, and RRLC12S.	
	E10WCP Emergency battery pack, 10W Constant Power with integral test switch. Certified in CA Title 20 MAEDB	NLTAIR2 ^{8,9} nLight® Air enabled	
	E10WCPR Emergency battery pack, 10W Constant Power with integral test switch. Certified in CA Title 20 MAEDB	NLTAIRER2 ^{8,9} nLight® AIR Dimming Pack Wireless Controls. Controls fixtures on emergency circuit	
	NPP16D ⁶ nLight® network power/relay pack with 0-10V dimming for non-eldoLED drivers (GZ10, GZ1).	USPOM US point of manufacture	
	NPP16DER ⁶ nLight® network power/relay pack with 0-10V dimming for non-eldoLED drivers (GZ10, GZ1). ER controls fixtures on emergency circuit.		

Accessories: Order as separate catalog number.	
EAC ISSM 375	Compact interruptible emergency AC power system
EAC ISSM 125	Compact interruptible emergency AC power system
GRA68 JZ	Oversized trim ring with 8" outside diameter ¹
SCA6	Sloped ceiling adapter. Refer to TECH-SCA for more options.

- Notes**
- Overall height varies based on lumen package; refer to dimensional chart on page 3.
 - Not available with finishes.
 - Not available with emergency options.
 - Must specify voltage 120V or 277V.
 - Available with clear (AR) reflector only.
 - Specify voltage. ER for use with generator supply EM power. Will require an emergency hot feed and normal hot feed.
 - Fixture begins at 80% light level. Must be specified with NPS80EZ or NPS80EZ ER. Only available with EZ10 and EZ1 drivers.
 - Not available with CP, NPS80EZ, NPS80EZER, NPP16D, NPP16DER or N80 options.
 - NLTAIR2 and NLTAIRER2 not recommended for metal ceiling installations.
 - Fixture height is 6.5" for all lumen packages with HAO.
 - Must specify voltage for 3000lm, 5000lm with marked spacing 24 L x 24 W x 14 H. Not available with emergency battery pack option.

LDN6

PHOTOMETRY

Distribution Curve	Distribution Data	Output Data	Coefficient of Utilization	Illuminance Data at 30" Above Floor for a Single Luminaire				
LDN6 35/10 L06AR , input watts: 12.75, delivered lumens: 1082, LM/W = 84.86, spacing criterion at 0= 1.02, test no. ISF 30716P31.								
	Ave Lumens	Zone Lumens % Lamp	pf pc pw	80% 50% 30% 10%	20% 70% 50% 30% 10%	50% 50% 30% 10%	50% beam - 54.5°	10% beam - 82.2°
	0 961	0° - 30° 746.1 69.0	0	119 119 119	116 116 116	111 111 111		
	5 992 98	0° - 40° 981.1 90.7	1	111 108 106	109 106 104	104 103 101	10.0 17.1 7.7 8.5 13.1 1.7	
	15 1064 295	0° - 60° 1080.9 99.9	2	103 99 95	101 97 94	98 95 92	12.0 10.6 9.8 5.3 16.6 1.1	
	25 789 353	0° - 90° 1082.0 100.0	3	96 91 87	94 90 86	92 88 85	14.0 7.3 11.8 3.6 20.1 0.7	
	35 362 235	90° - 120° 0.0 0.0	4	89 84 79	88 83 79	86 81 78	16.0 5.3 13.9 2.6 23.6 0.5	
	45 121 96	90° - 130° 0.0 0.0	5	83 77 73	82 77 73	81 76 72		
	55 2 4	90° - 150° 0.0 0.0	6	78 72 68	77 72 67	76 71 67		
	65 1 1	90° - 180° 0.0 0.0	7	73 67 63	73 67 63	71 66 62		
	75 0 0	0° - 180° 1082.0 *100.0	8	69 63 59	68 62 58	67 62 58		
	85 0 0	*Efficiency	9	65 59 55	64 59 55	63 58 54		
90 0 0		10	61 55 51	61 55 51	60 55 51			

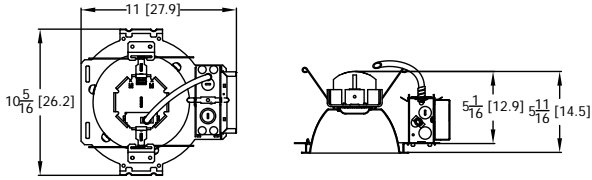
LDN6 35/30 L06AR , input watts: 34.69, delivered lumens: 3033.9, LM/W = 87.45, spacing criterion at 0= 1.02, test no. ISF 30716P22.								
	Ave Lumens	Zone Lumens % Lamp	pf pc pw	80% 50% 30% 10%	20% 70% 50% 30% 10%	50% 50% 30% 10%	50% beam - 54.5°	10% beam - 82.2°
	0 2693	0° - 30° 2092.2 69.0	0	119 119 119	116 116 116	111 111 111		
	5 2782 274	0° - 40° 2751.0 90.7	1	111 108 106	109 106 104	104 103 101	10.0 47.9 7.7 23.9 13.1 4.8	
	15 2984 827	0° - 60° 3030.8 99.9	2	103 99 95	101 97 94	98 95 92	12.0 29.8 9.8 14.9 16.6 3.0	
	25 2212 991	0° - 90° 3033.9 100.0	3	96 91 87	94 90 86	92 88 85	14.0 20.4 11.8 10.2 20.1 2.0	
	35 1014 659	90° - 120° 0.0 0.0	4	89 84 79	88 83 79	86 81 78	16.0 14.8 13.9 7.4 23.6 1.5	
	45 339 268	90° - 130° 0.0 0.0	5	83 77 73	82 77 73	81 76 72		
	55 4 12	90° - 150° 0.0 0.0	6	78 72 68	77 72 67	76 71 67		
	65 2 2	90° - 180° 0.0 0.0	7	73 67 63	73 67 63	71 66 62		
	75 1 1	0° - 180° 3033.9 *100.0	8	69 63 59	68 62 58	67 62 58		
	85 0 0	*Efficiency	9	65 59 55	64 59 55	63 58 54		
90 0 0		10	61 55 51	61 55 51	60 55 51			

LDN6 35/50 L06AR , input watts: 55.56, delivered lumens: 4922.1, LM/W = 88.59, spacing criterion at 0= 1.02, test no. ISF 30716P40.								
	Ave Lumens	Zone Lumens % Lamp	pf pc pw	80% 50% 30% 10%	20% 70% 50% 30% 10%	50% 50% 30% 10%	50% beam - 54.5°	10% beam - 82.2°
	0 4370	0° - 30° 3394.2 69.0	0	119 119 119	116 116 116	111 111 111		
	5 4513 445	0° - 40° 4463.2 90.7	1	111 108 106	109 106 104	104 103 101	10.0 77.7 7.7 38.8 13.1 7.8	
	15 4841 1341	0° - 60° 4917.1 99.9	2	103 99 95	101 97 94	98 95 92	12.0 48.4 9.8 24.2 16.6 4.8	
	25 3589 1608	0° - 90° 4922.1 100.0	3	96 91 87	94 90 86	92 88 85	14.0 33.0 11.8 16.5 20.1 3.3	
	35 1645 1069	90° - 120° 0.0 0.0	4	89 84 79	88 83 79	86 81 78	16.0 24.0 13.9 12.0 23.6 2.4	
	45 550 435	90° - 130° 0.0 0.0	5	83 77 73	82 77 73	81 76 72		
	55 7 19	90° - 150° 0.0 0.0	6	78 72 68	77 72 67	76 71 67		
	65 3 3	90° - 180° 0.0 0.0	7	73 67 63	73 67 63	71 66 62		
	75 2 2	0° - 180° 4922.1 *100.0	8	69 63 59	68 62 58	67 62 58		
	85 0 0	*Efficiency	9	65 59 55	64 59 55	63 58 54		
90 0 0		10	61 55 51	61 55 51	60 55 51			

LDN6

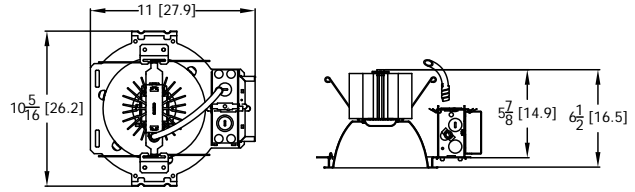
* All dimensions are inches (centimeters) unless otherwise noted.

LDN6 500-1500 LUMEN



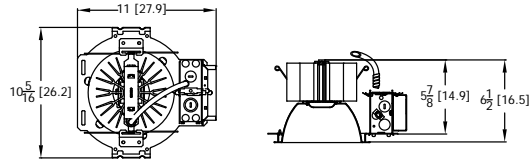
Aperture: 6-1/4 (15.9)
Ceiling Opening: 7-1/8 (18.1)
Overlap trim: 7-1/2 (19.1)

LDN6 2000-3000 LUMEN



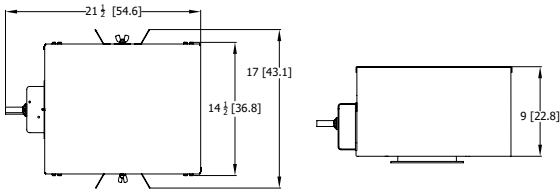
Aperture: 6-1/4 (15.9)
Ceiling Opening: 7-1/8 (18.1)
Overlap trim: 7-1/2 (19.1)

LDN6 4000-5000 LUMEN



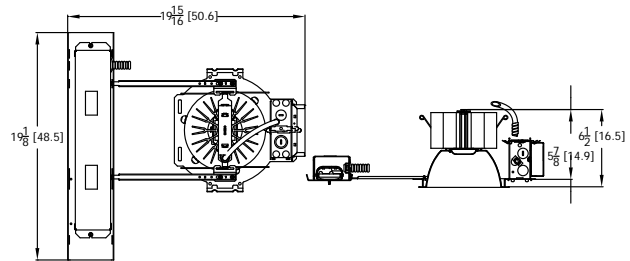
Marked Spacing: 24 x 24 x 10
Aperture: 6-1/4 (15.9)
Ceiling Opening: 7-1/8 (18.1)
Overlap trim: 7-1/2 (19.1)

LDN6 CP



Aperture: 6-1/4" (15.9)
Ceiling Opening: 7-1/8" (18.1)
Overlap trim: 7-1/2" (19.1)

LDN6 EL-ELR



Marked Spacing above 3000 lumen: 24 x 24 x 10
Aperture: 6-1/4 (15.9)
Ceiling Opening: 7-1/8 (18.1)
Overlap trim: 7-1/2 (19.1)

LDN6			
Target Lumen	Lumens @ 3500K	Wattage	LPW
500	662.2	7.6	87.1
1000	1082.0	12.8	84.5
1500	1606.0	20.5	78.3
2000	2023.0	22.6	89.5
2500	2529.5	27.1	93.3
3000	3034.0	34.7	87.4
4000	3977.5	44.1	90.2
5000	4922.2	55.5	88.7

HOW TO ESTIMATE DELIVERED LUMENS IN EMERGENCY MODE

Use the formula below to estimate the delivered lumens in emergency mode

$$\text{Delivered Lumens} = 1.25 \times P \times \text{LPW}$$

P = Output power of emergency driver. P = 10W for PS1055CP

LPW = Lumen per watt rating of the luminaire. This information is available on the ABL luminaire spec sheet.

The LPW rating is also available at Designlight Consortium.

	LUMEN OUTPUT MULTIPLIERS - FINISH		
	Clear (AR)	White (WR)	Black (BR)
Specular (LS)	1.0	N/A	N/A
Semi-specular (LSS)	0.950	N/A	N/A
Matte diffuse (LD)	0.85	N/A	N/A
Painted	N/A	0.87	0.73

	LUMEN OUTPUT MULTIPLIERS - CCT				
	2700K	3000K	3500K	4000K	5000K
80CRI	0.950	0.966	1.000	1.025	1.101

Notes

- Tested in accordance with IESNA LM-79-08.
- Tested to current IES and NEMA standards under stabilized laboratory conditions.
- CRI: 80 typical.



LDN6

ADDITIONAL DATA

COMPATIBLE 0-10V WALL-MOUNT DIMMERS		
MANUFACTURER	PART NO.	POWER BOOSTER AVAILABLE
Lutron®	Dival® DDTV	
	Dival® DVSTV	
	Nova T® NTFTV	
	Nova® NFTV	
Leviton®	AWSMT-7DW	CN100
	AWSMG-7DW	PE300
	AMRMG-7DW	
	Leviton Centura Fluorescent Control System	
	IllumaTech® IP7 Series	
Synergy®	ISD BC	RDMFC
	SLD LPCS	
	Digital Equinox (DEQ BC)	
Douglas Lighting Controls	WPC-5721	
Entertainment Technology	Tap Glide TG600FAM120 (120V)	
	Tap Glide Heatsink TGH1500FAM120 (120V)	
	Oasis OA2000FAMU	
Honeywell	EL7315A1019	EL7305A1010 (optional)
	EL7315A1009	
HUNT Dimming	Preset slide: PS-010-IV and PS-010-WH	
	Preset slide: PS-010-3W-IV and PS-010-3W-WH	
	Preset slide, controls FD-010: PS-IFC-010-IV and PS-IFC-010-WH-120/277V	
	Preset slide, controls FD-010: PS-IFC-010-3W-IV and PS-IFC-010-3W-WH-120/277V	
	Remote mounted unit: FD-010	
Lehigh Electronic Products	Solitaire	PBX
PDM Electrical Products	WPC-5721	
Starfield Controls	TR61 with DALI interface port	RT03 DALInet Router
WattStopper®	LS-4 used with LCD-101 and LCD-103	

A+ Capable Luminaire

This item is an A+ capable luminaire, which has been designed and tested to provide consistent color appearance and out-of-the-box control compatibility with simple commissioning.

- All configurations of this luminaire meet the Acuity Brands' specification for chromatic consistency
- This luminaire is part of an A+ Certified solution for nLight® control networks when ordered with drivers marked by a shaded background*
- This luminaire is part of an A+ Certified solution for nLight control networks, providing advanced control functionality at the luminaire level, when selection includes driver and control options marked by a shaded background*

To learn more about A+, visit www.acuitybrands.com/aplus.

*See ordering tree for details

LDN6

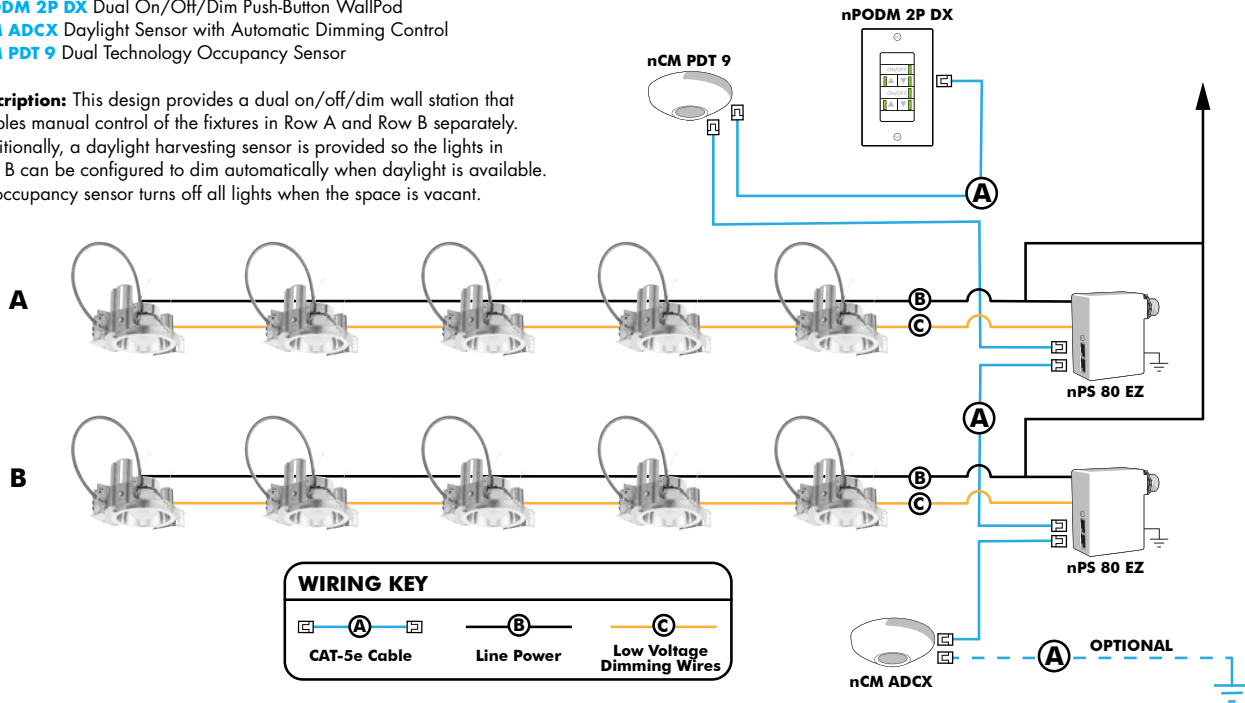
EXAMPLE

Group Fixture Control*

*Application diagram applies for fixtures with eldoLED drivers only.

- nPS 80 EZ** Dimming/Control Pack (qty: 2 required)
- nPODM 2P DX** Dual On/Off/Dim Push-Button WallPod
- nCM ADCX** Daylight Sensor with Automatic Dimming Control
- nCM PDT 9** Dual Technology Occupancy Sensor

Description: This design provides a dual on/off/dim wall station that enables manual control of the fixtures in Row A and Row B separately. Additionally, a daylight harvesting sensor is provided so the lights in Row B can be configured to dim automatically when daylight is available. An occupancy sensor turns off all lights when the space is vacant.



Choose Wall Controls

nLight offers multiple styles of wall controls - each with varying features and user experience.



Push-Button Wallpod
Traditional tactile buttons and LED user feedback



Graphic Wallpod
Full color touch screen provides a sophisticated look and feel

nLight® Wired Controls Accessories:

Order as separate catalog number. Visit www.acuitybrands.com/products/controls/nlight for complete listing of nLight controls.

WallPod Stations	Model number	Occupancy sensors	Model Number
On/Off	nPODM (Color)	Small motion 360°, ceiling (PIR/dual Tech)	nCM 9 / nCM PDT 9
On/Off & Raise/Lower	nPOD DX (Color)	Large motion 360°, ceiling (PIR/dual tech)	nCM 10 / nCM PDT 10
Graphic Touchscreen	nPOD GFX (Color)	Wide View (PIR/dual tech)	nWV 16 / nWV PDT 16
Photocell controls	Model Number	Wall Switch w/ Raise/Lower (PIR/dual tech)	nWSX LV DX / nWSX PDT LV DX
Dimming	nCM ADCX	Cat-5 cables (plenum rated)	Model Number
		10', CAT5 10FT	CAT5 10FT J1
		15, CAT5 15FT	CAT5 15FT J1

nLight® AIR Control Accessories:

Order as separate catalog number. Visit www.acuitybrands.com/products/controls/nlightair.

Wall switches	Model number
On/Off single pole	rPODB [color]
On/Off two pole	rPODB 2P [color]
On/Off & raise/lower single pole	rPODB DX [color]
On/Off & raise/lower two pole	rPODB 2P DX [color]
On/Off & raise/lower single pole	rPODBZ DX WH ¹

Notes

- 1 Can only be ordered with the RES7Z zone control sensor version.

nLight AIR

nLight AIR is the ideal solution for retrofit or new construction spaces where adding communication is cost prohibitive. The integrated nLight AIR rPP20 Power Pack is part of each Lithonia LDN Luminaire. These individually addressable controls offer the ultimate in flexibility during initial setup and for space repurposing.



Simple as 1,2,3

1. Install the nLight® AIR fixtures with embedded smart sensor
2. Install the wireless battery-powered wall switch
3. With CLAIRITY app, pair the fixtures with the wall switch and if desired, customize the sensor settings for the desired outcome

